

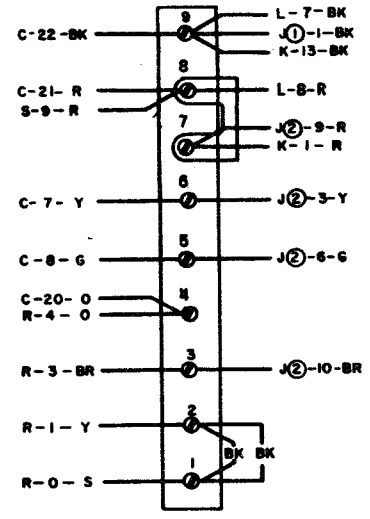


- NO. NOTES**
- WIRING LEGEND:**
  - COLOR CODE:**  

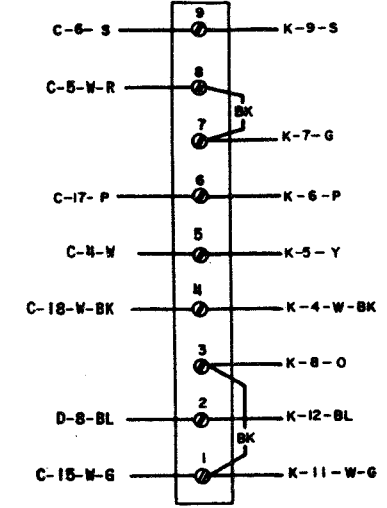
BK - BLACK	G - GREEN
BR - BROWN	BL - BLUE
R - RED	P - PURPLE
O - ORANGE	W - WHITE
Y - YELLOW	S - SLATE
  - UNIT WIRED FOR 115 VOLTS. 50 TO 60 CYCLE A.C. POWER INPUT ONLY.
  - CONNECTORS VIEWED FROM SOLDER TERMINAL ENDS.
  - CIRCUITS SHOWN FOR .060 AMP. NEUTRAL SIGNAL LINE OPERATION. FOR .020 AMP. OPERATION, REMOVE AND ADD CONNECTIONS AS TABULATED BELOW:  

SIGNAL LINE CONNECTIONS	CONNECTIONS
CURRENT REMOVED	ADDED
.020 AMP. K1-K2,	J13-J14
J11-J12	
  - RECTIFIER SHOWN CONTROLLED BY POWER SWITCH.  
 A. FOR CONTINUOUS OPERATION, REMOVE LEAD L-2-BK FROM TERMINAL E-2 AND CONNECT TO TERMINAL E-1.
  - LINE SHUNT RELAY SHOWN SHUNTING LINE LINE RELAY COIL AND KEYBOARD AND TRANSMITTER DISTRIBUTOR SIGNAL GENERATOR.  
 A. IF KEYBOARD SHUNTING IS NOT DESIRED, OR WHEN SIGNAL LINE BREAK SWITCH IS PRESENT, REMOVE THE BLACK STRAP CONNECTED BETWEEN TERMINALS C-10 AND C-13 AND CONNECT TERMINALS C-9 AND C-13.
  - THE SPARE LEADS FROM THE KEYBOARD AND TRANSMITTER DISTRIBUTOR UNITS CONNECTORS ARE TERMINATED IN THE RIGHT END OF THE ELECTRICAL SERVICE UNIT. THE SPARE LEADS FROM THE TYPING UNIT CONNECTOR ARE TERMINATED IN THE LEFT END OF THE ELECTRICAL SERVICE UNIT.
  - ADD STRAP BETWEEN C-10 AND C-11, IF SIGNAL LINE BREAK SWITCH IS NOT USED.
  - TO PREVENT SLOW RELEASE RELAY FROM OPERATING, REMOVE STRAP CONNECTING T-3, T-4 AND T-5.
  - SPARE LEADS FROM F-18 AND U-18 ARE RESERVED FOR POLAR OPERATION OF KEYBOARD AND TRANSMITTER DISTRIBUTOR SIGNAL GENERATORS.
  - TERMINALS C-143, C-148 RESERVED FOR CABINET LAMP OPERATION.
  - TERMINALS C-1 - C-3 RESERVED FOR CUSTOMER'S USE.
  - TERMINALS C-121 - C-122 RESERVED FOR PERFORATOR LOW-TAPE SWITCH.
  - CONTACTS SHOWN IN UNOPERATED OR DE-ENERGIZED POSITION.

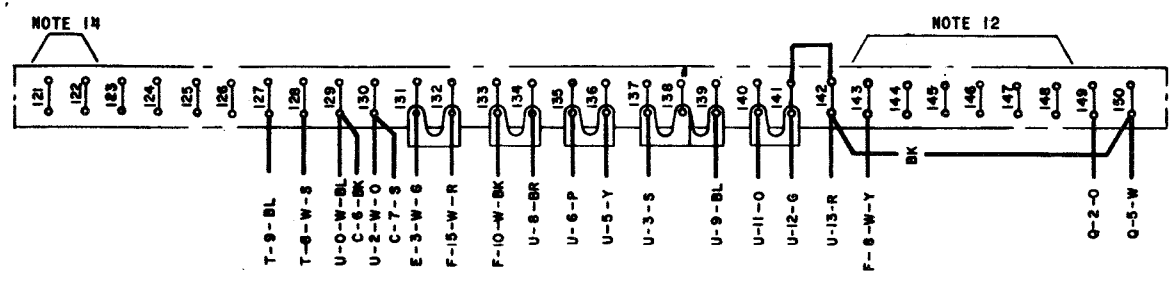
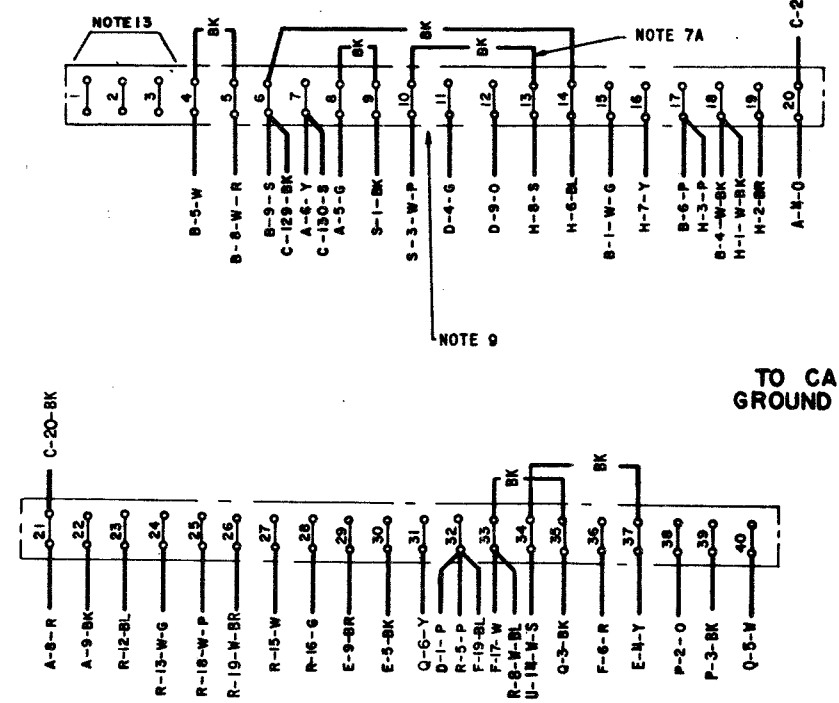
**A**  
SELECTOR MAGNET TERMINAL BLOCK



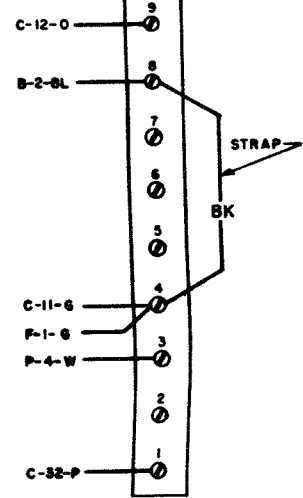
**B**  
LINE TEST KEY TERMINAL BLOCK



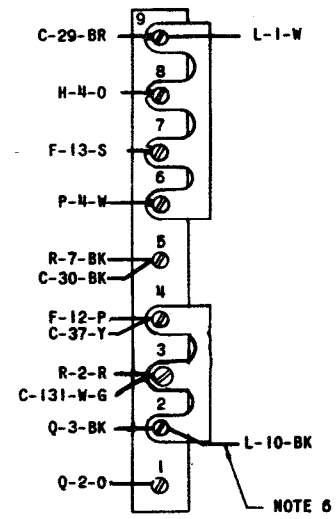
**C** CABINET TERMINAL BLOCK



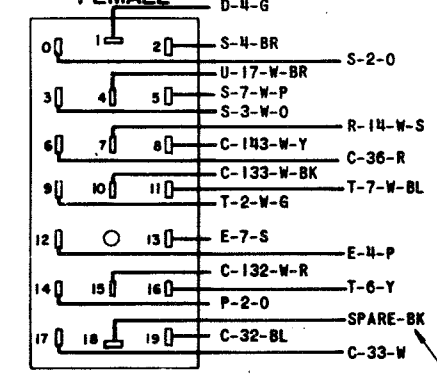
**D**  
MOTOR CONTROL TERMINAL BLOCK



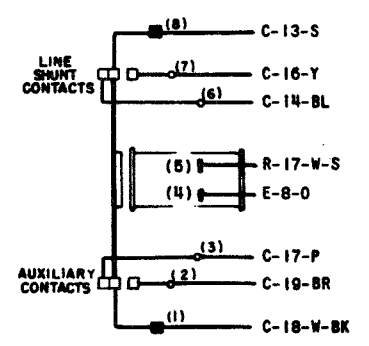
**E**  
POWER TERMINAL BLOCK



**F**  
KEYBOARD CONNECTOR FEMALE



**H**  
LINE SHUNT RELAY



NOTE: REVISION INFORMATION MUST ALSO BE REFLECTED ON THE ISSUE CONTROL RECORD, WHICH IS PART OF THIS W.D.

**3296 WD**

REVISIONS		
ISSUE	DATE	AUTH. NO.
A	1-6-59	28-10286
B	5-20-59	28-11103
C	6-18-59	28-10488-1
D	8-4-59	28-11508
E	3-20-61	69286
F	5-31-61	69920
G	3-28-62	69768-10
H	7-29-65	88100
I	4-13-66	88100-1

SEE ISSUE CONTROL RECORD FOR COMPLETE LIST OF SHEETS COMPRISING THIS W.D.

SHEET 1

ACTUAL WIRING DIAGRAM FOR MODEL 28 ELECTRICAL SERVICE UNIT ASR - GP - OPT II - AC LESU15

APPROVALS

D AND R	E OF M
----	----

E-NUMBER

PROD. NO. 3296WD

DATE 10-10-66

P.D. FILE NO. 27A.65AA

DRAWN R.W.D. CHKD.

ENGD. J.C.T. APPD.

**TELETYPE CORPORATION**

**3296 WD**

SEE SHEET 1 FOR NOTES

NOTE:  
REVISION INFORMATION MUST ALSO  
BE REFLECTED ON THE ISSUE  
CONTROL RECORD, WHICH IS PART  
OF THIS W.D.

**3296WD**

**REVISIONS**

ISSUE	DATE	AUTH. NO.
A	1-6-59	28-10265
B	5-20-59	28-11103
C	6-18-59	28-10488-1
D	8-4-59	28-11508
E	3-20-61	69286
F	5-31-61	69920
G	3-28-62	69768-10
H	7-29-65	88100
I	4-13-66	88100-1

RTTY ELECTRONICS  
TELETYPE=Sales-Service-Parts  
PO Box 20101 El Sobrante, Ca.  
94820. (510)222-3102  
mr\_rtty@pacbell.net

SEE ISSUE CONTROL RECORD FOR  
COMPLETE LIST OF SHEETS  
COMPRISING THIS W.D.

**SHEET 2**

ACTUAL  
WIRING DIAGRAM  
FOR  
MODEL 28  
ELECTRICAL  
SERVICE UNIT  
ASR - GP - OPT II - AC  
LESU18

**APPROVALS**

D AND R      E OF M

E-NUMBER

PROD. NO. 3296WD

DATE 10-10-56

P.D. FILE NO. 27A.65AA

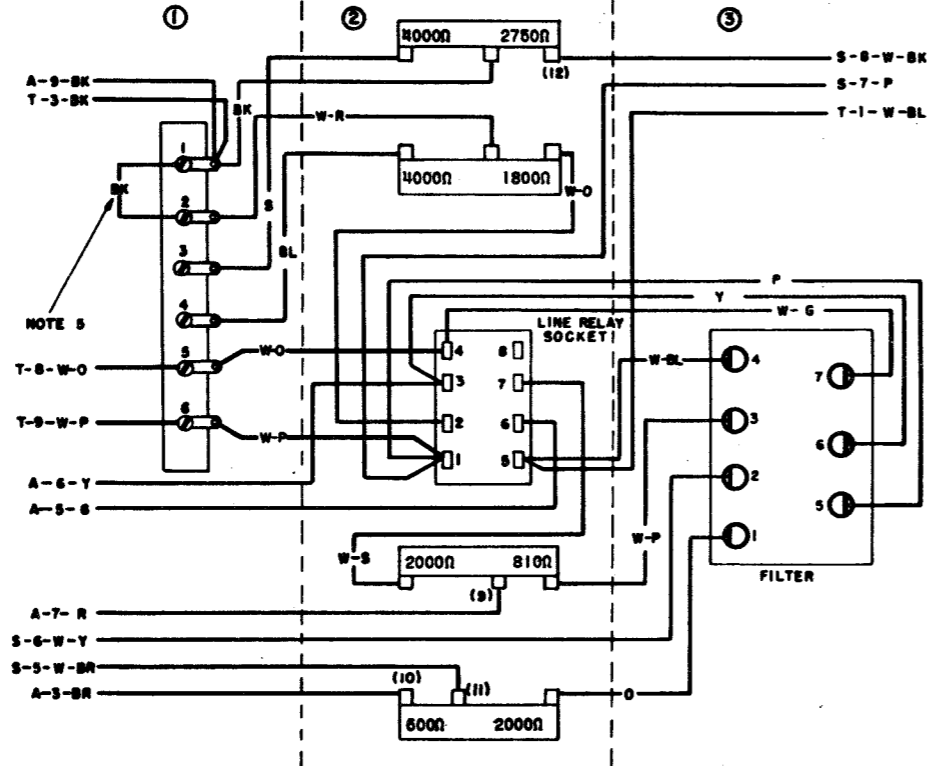
DRAWN R.V.D.      CHKD. R.D.

ENGD. J.C.T.      APPD.

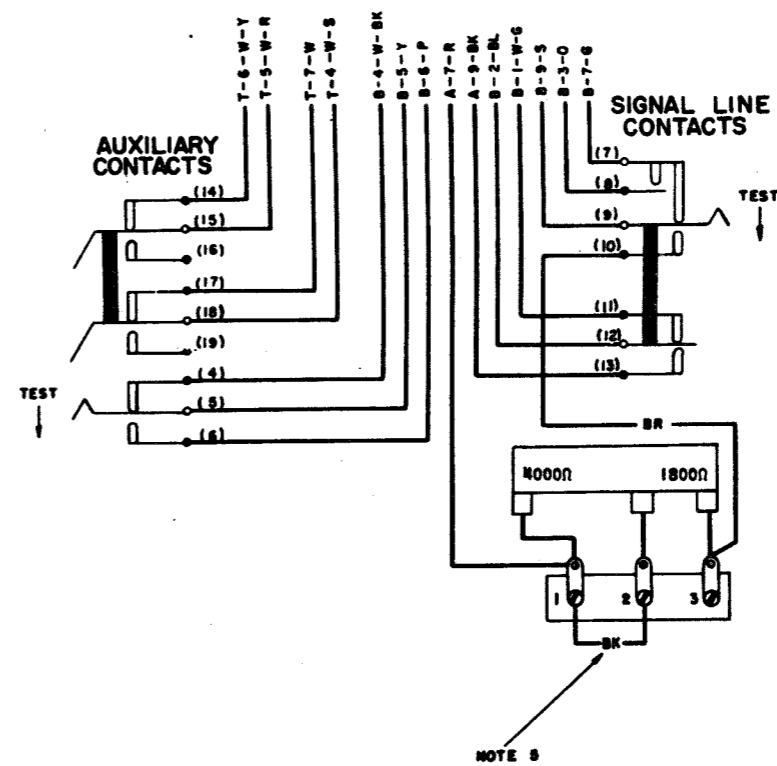
**TELETYPE  
CORPORATION**

**3296WD**

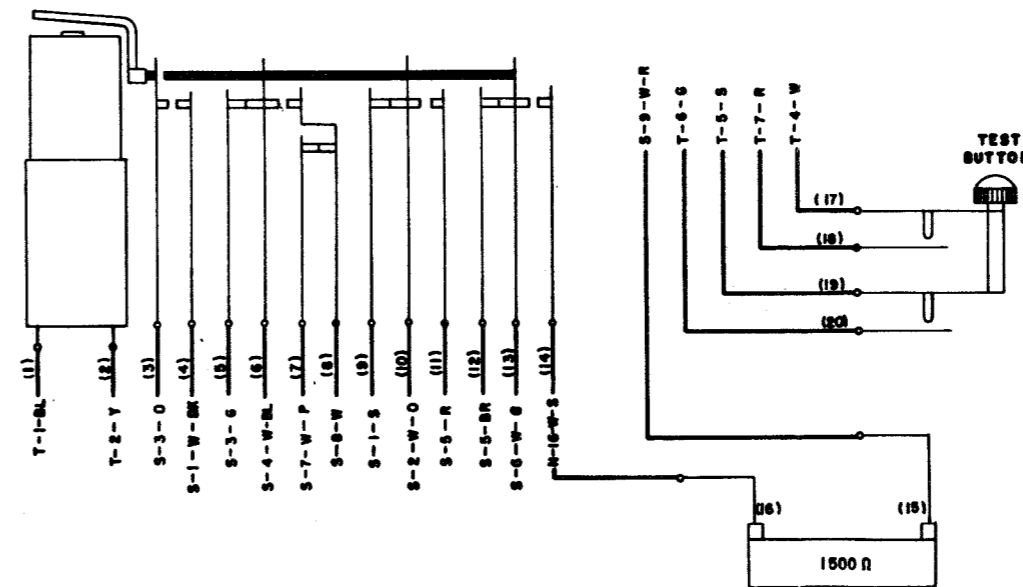
**J  
LINE RELAY MOUNTING ASSEMBLY**



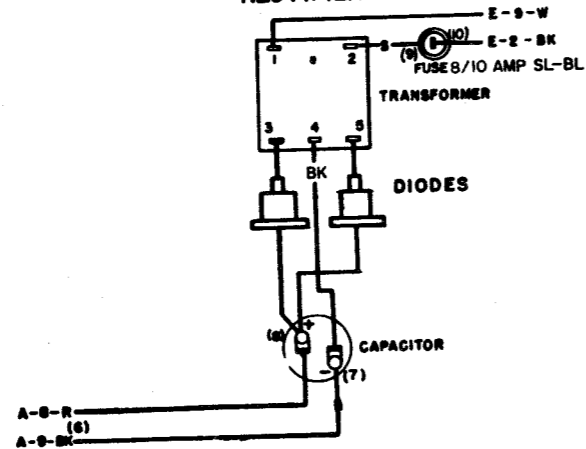
**K  
LINE TEST KEY ASSEMBLY**



**N  
SLOW RELEASE RELAY ASSEM.**



**L  
RECTIFIER ASSEMBLY**



SEE SHEET 1 FOR NOTES.

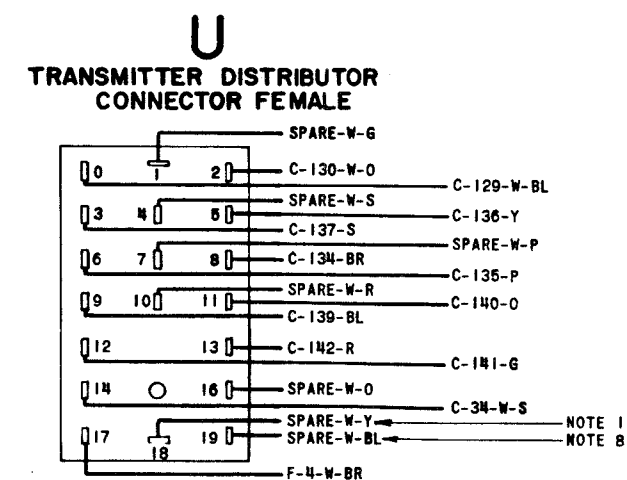
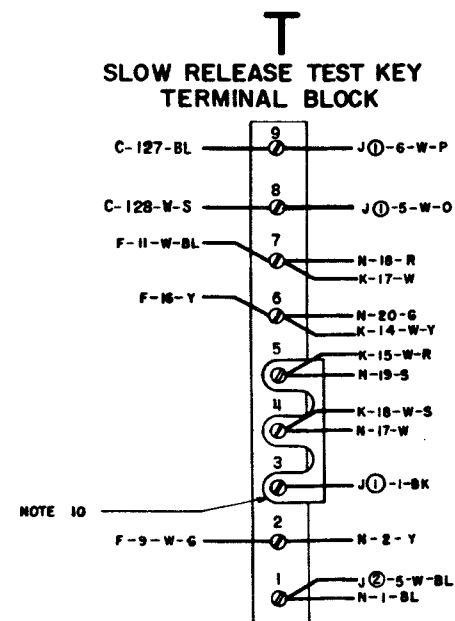
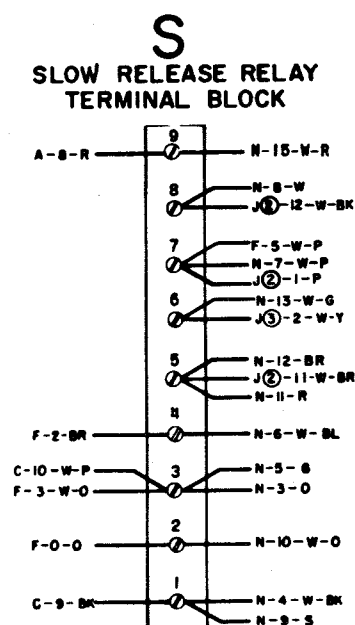
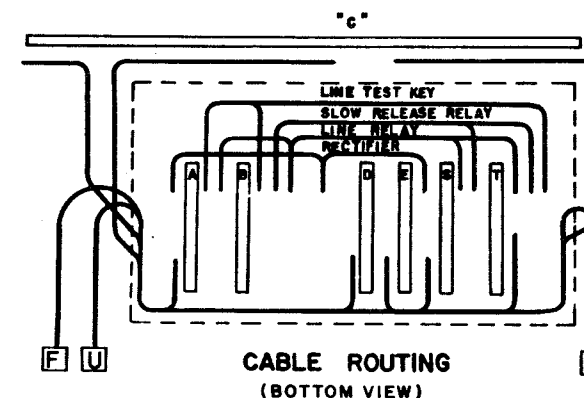
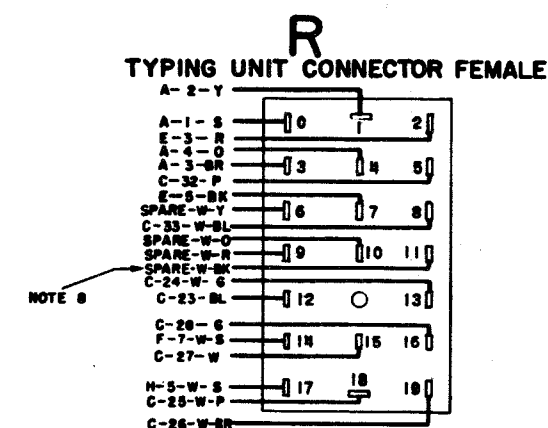
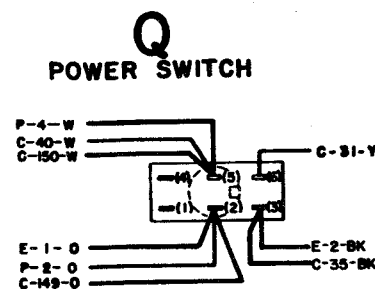
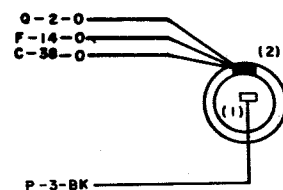
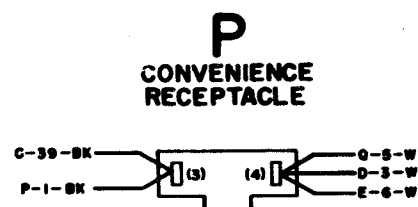
NOTE:  
REVISION INFORMATION MUST ALSO  
BE REFLECTED ON THE ISSUE  
CONTROL RECORD, WHICH IS PART  
OF THIS W.D.

3296 WD

REVISIONS

ISSUE	DATE	AUTH. NO.
A	1-6-59	28-10286
B	5-20-59	28-11103
C	6-18-59	28-10488-1
D	8-4-59	28-11598
E	3-20-61	89286
F	5-31-61	89920
G	3-28-62	89788-10
H	7-29-65	88100
I	4-13-66	88100-1

RTTY ELECTRONICS  
TELETYPE=Sales-Service-Parts  
PO Box 20101 El Sobrante, Ca.  
94820. (510)222-3102  
mr\_rtty@pacbell.net



SEE ISSUE CONTROL RECORD FOR  
COMPLETE LIST OF SHEETS  
COMPRISING THIS W.D.

SHEET 3

ACTUAL  
WIRING DIAGRAM  
FOR  
MODEL 28  
ELECTRICAL  
SERVICE UNIT  
ASR - GP - OPT II - AC  
LESU15

APPROVALS

D AND R  
E OF M

E-NUMBER

PROD. NO. 3296WD

DATE 10-10-56

P.D. FILE NO. 27A.65AA

DRAWN R.W.D. CHKD.

ENGD. J.C.T. APPD.

TELETYPE  
CORPORATION

3296 WD