

1. WIRING LEGEND

- DISTANT TERMINATING AREA
- DISTANT TERMINAL DESIGNATION
- WIRE COLOR CODE

2. COLOR CODE

BK	BLACK
BL	BLUE
BR	BROWN
GR	GREEN
OR	ORANGE
PR	PURPLE
RD	RED
SL	SLATE
YL	YELLOW
WH	WHITE
VL	VIOLET

3. CUSTOMER TO USE TUBING WHEN ADDING STRAPS TO STEPPING SWITCH.

THE NUMBERING MODULES AS RECEIVED FROM THE FACTORY ARE PERMANENTLY WIRED FOR THE FOLLOWING IDENTIFICATION SEQUENCE:

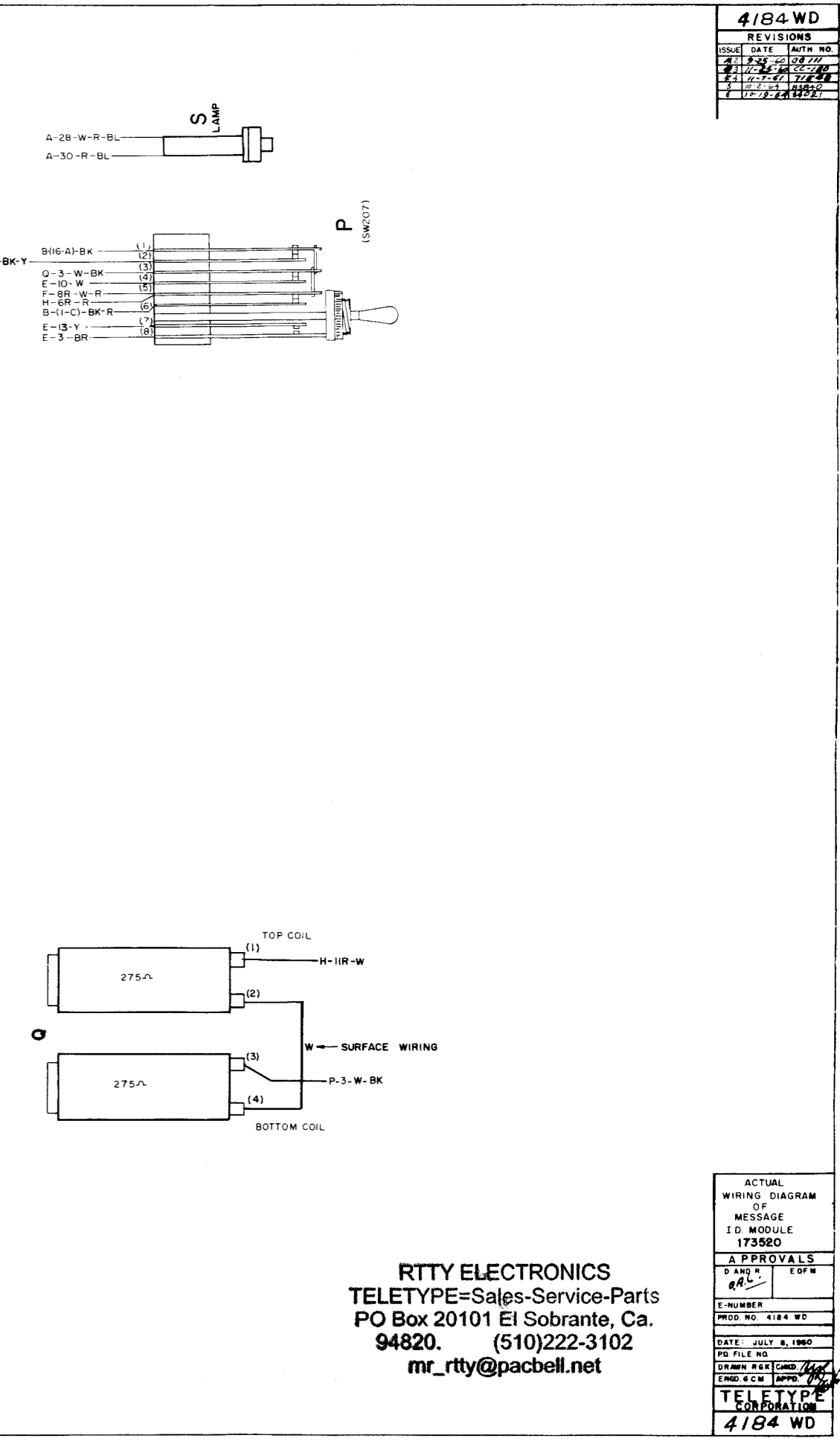
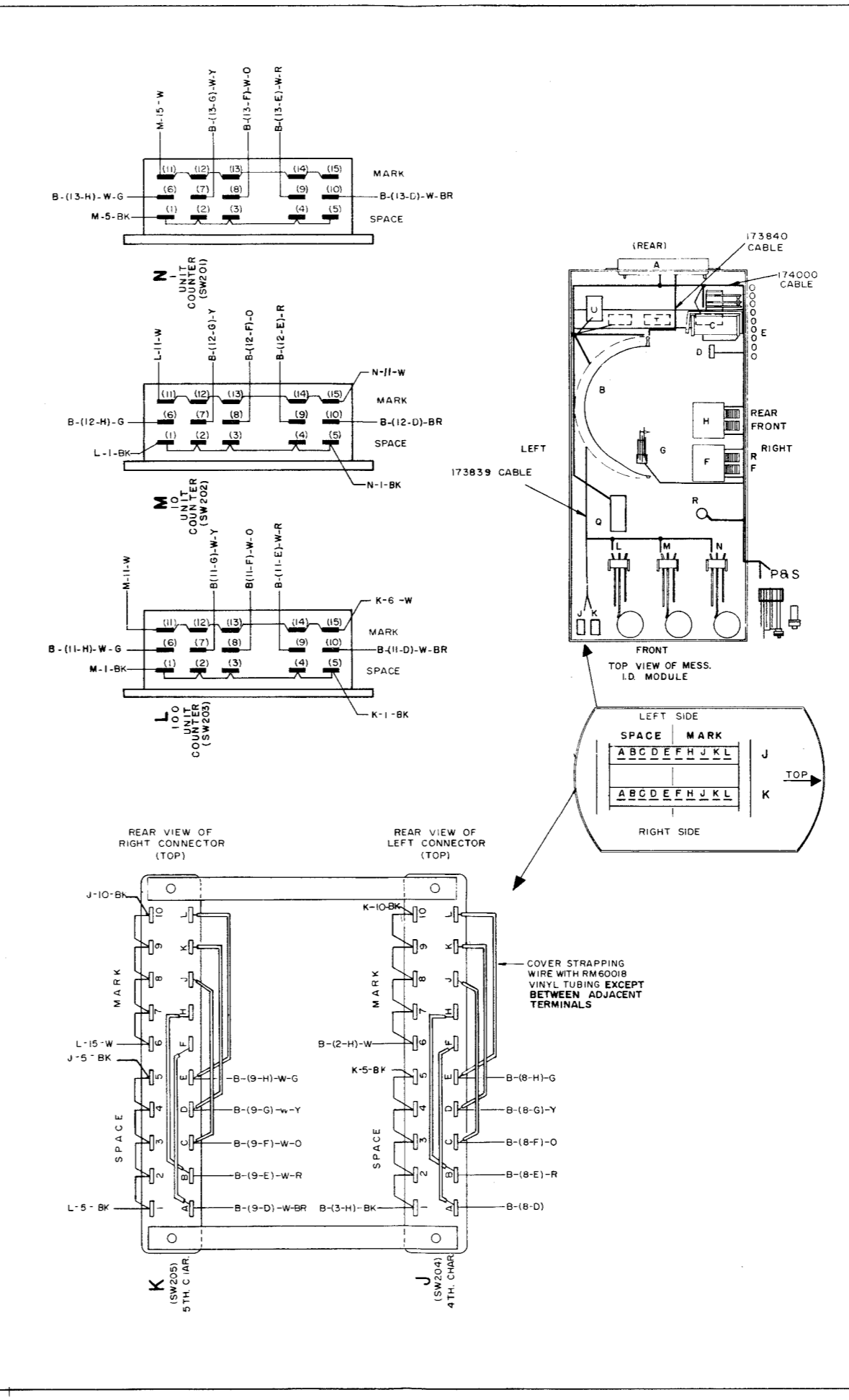
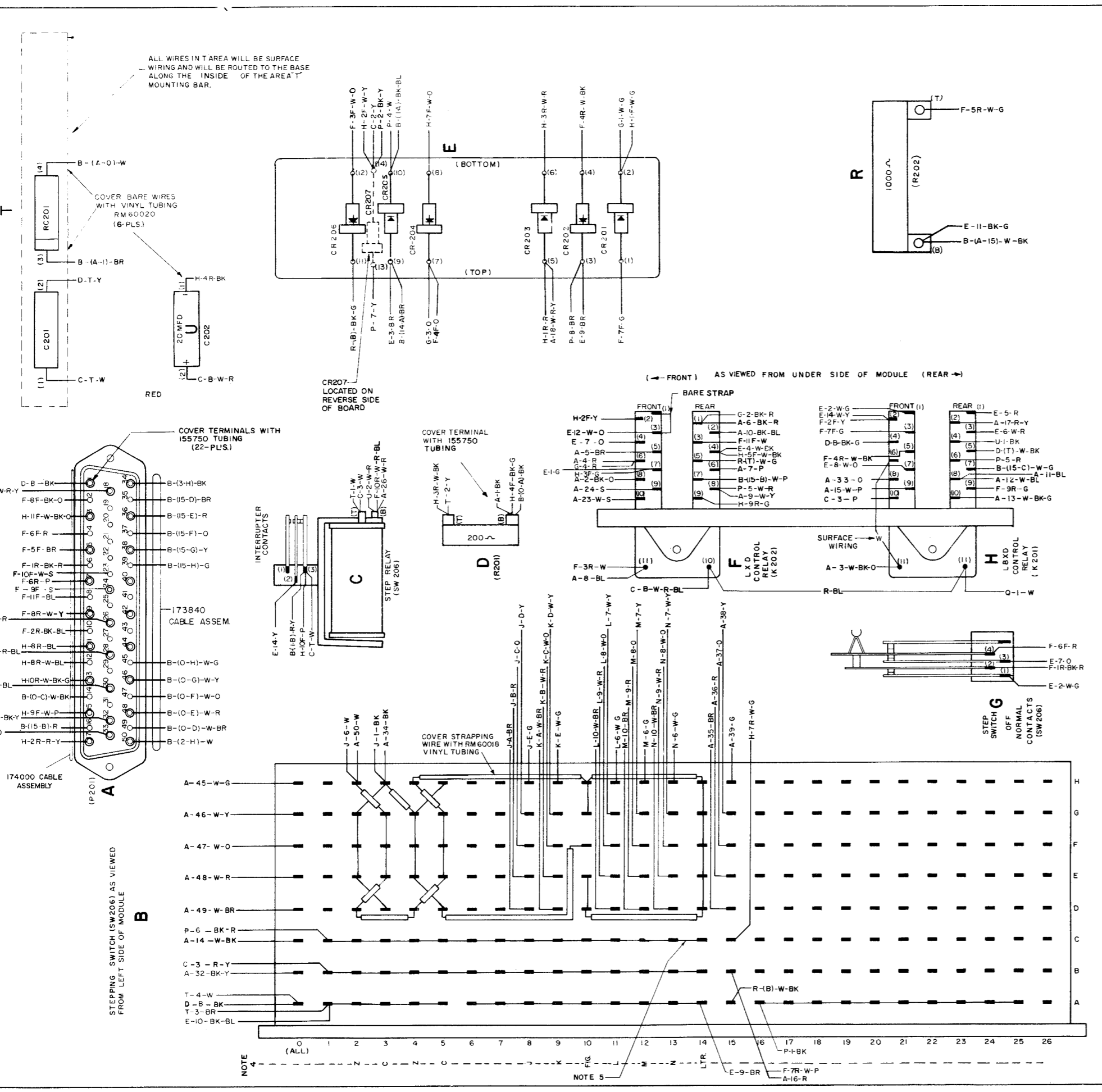
1. NOTE #	2. Z	3. C
4. Z	5. C	6. NOTE #
7. NOTE #	8. NOTE #	9. NOTE #
10. FIG.	11. IOO	12. IO
13. I	14. LTR.	

NOTE #
 THE 8th. AND 9th. CHARACTERS ARE PROVIDED WITH A UNIVERSAL BOARD (173575) AND CONNECTOR FOR READY CHANGEABILITY OF THE 8th. AND 9th. CODES BREAK TIMES ON CARDS TO CORRESPOND TO DESIRED CODE AS SHOWN BELOW

(+)	(-)
A	A
B	B
C	C
D	D
E	E
F	F
G	G
H	H
J	J
K	K
L	L

4. STEPPING SWITCH SW206 AS SUPPLIED FROM THE FACTORY DOES NOT HAVE THE 1st, 6th. AND 7th. CODE POSITIONS FOR THE DESIRED CODE. IF A SPECIFIC CODE IS NOT REQUIRED WIRE THE POSITION FOR LTR. COMBINATION: ALL MARK (MINUS BATT)

5. FOR FREE RUNNING OPERATION OF TRANSMITTERS REMOVE STRAP BETWEEN 13 AND 14 OF C LEVEL OF STEPPING SWITCH.



RTTY ELECTRONICS
 TELETYPE=Sales-Service-Parts
 PO Box 20101 El Sobrante, Ca.
 94820. (510)222-3102
 mr_rtty@pacbell.net