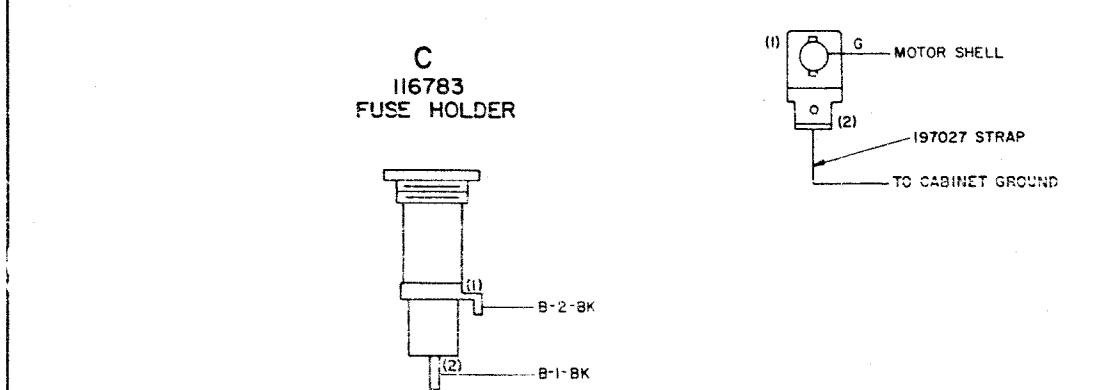
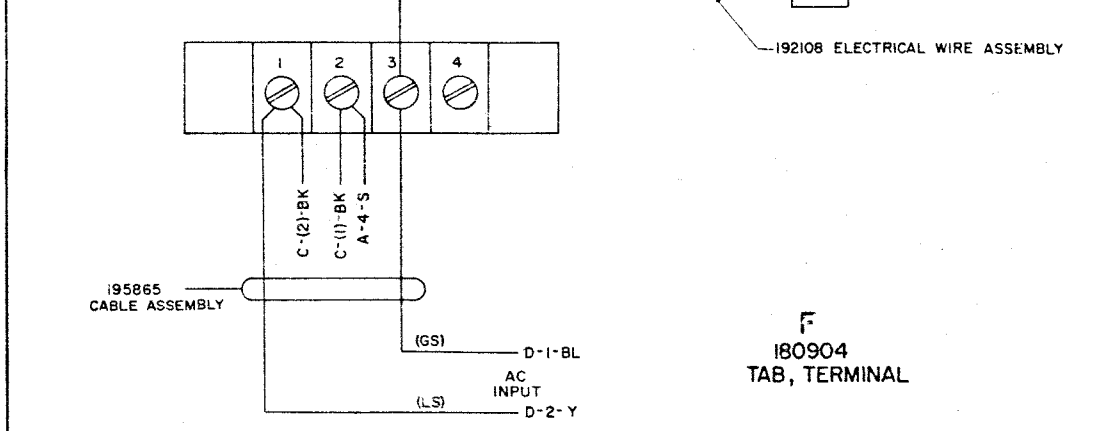
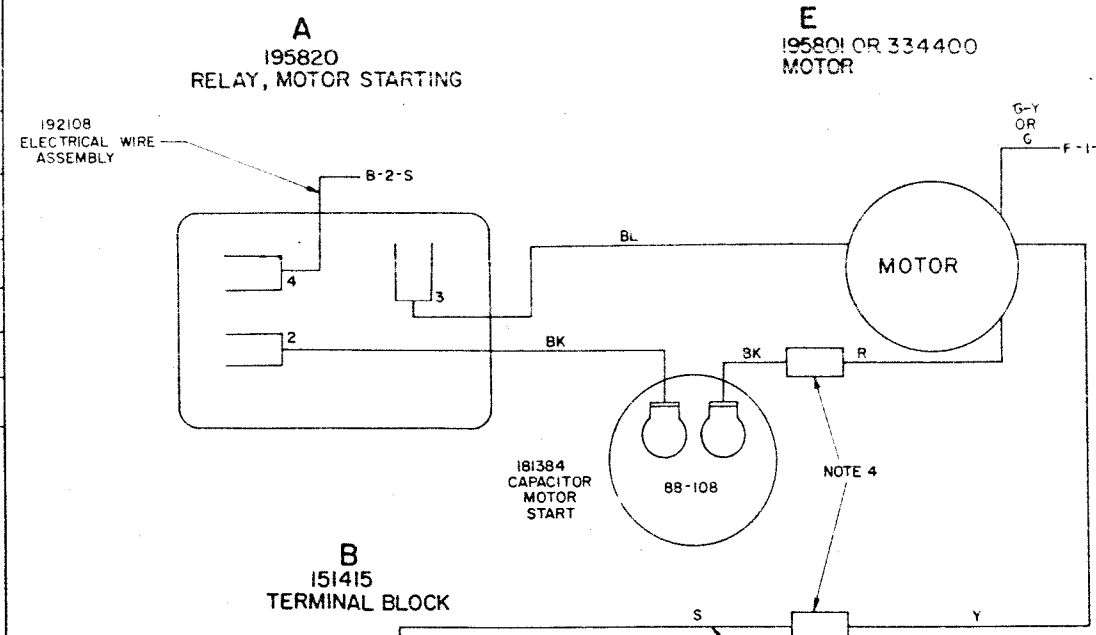


4348 WD

REVISIONS

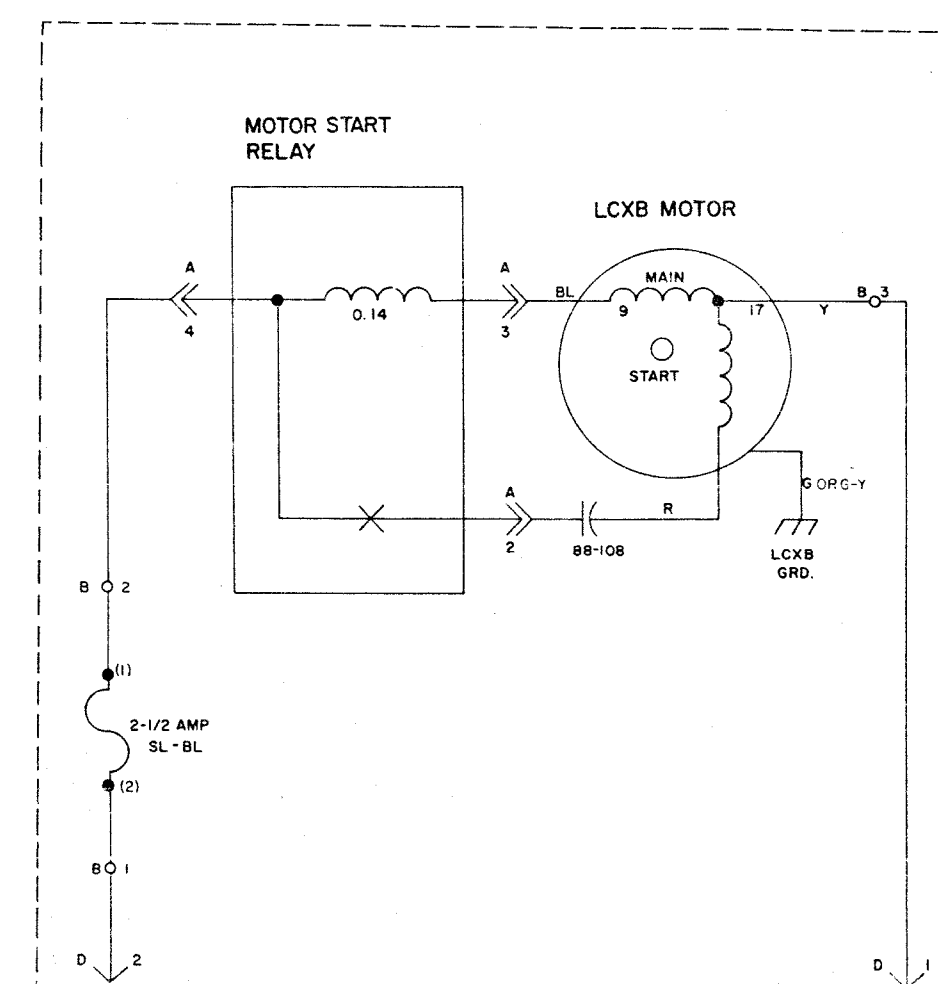
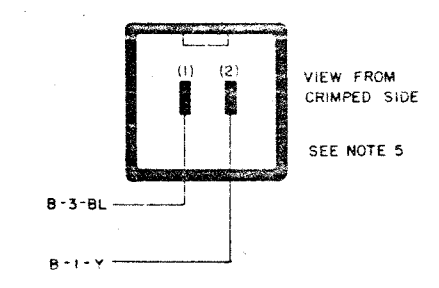
ISSUE	DATE	AUTH. NO.
2	1-8-64	76949
3	1-24-64	77439
4	2-11-64	80148
5	E 64	81344
6	8-26-65	81540-3
7	8-1-67	94198
8	3-6-69	96779

- NO NOTES
- WIRING LEGEND:  
 DISTANT TERMINATING AREA  
 DISTANT TERMINATING DESIGNATION  
 B-3-W-BL WIRE COLOR CODE
  - COLOR CODE:  
 BK-BLACK R-RED  
 BL-BLUE P-PURPLE  
 BR-BROWN Y-YELLOW  
 G-GREEN W-WHITE  
 O-ORANGE S-SLATE
  - TERMINALS DESIGNATED IN PARENTHESIS ARE FOR REFERENCE AND ARE NOT MARKED ON COMPONENTS.
  - QUICK CONNECT TERMINAL CONNECTIONS. COVER WITH 2-1/2 INCH LENGTH OF 60358RM VINYL TUBING
  - EARLY UNITS DO NOT CONTAIN THE 195862 CONNECTOR.
  - USE 115V AC ±10% 60~ ±1/2~ POWER ONLY
  - REFERENCE SPEC FOR TELETYPE CORP. EMPLOYEES ONLY 60,686S
  - ALL CAPACITANCE VALUES IN MICROFARADS, UNLESS OTHERWISE SPECIFIED.



ACTUAL

D  
195862  
CONNECTOR, PLUG  
2 PIN



SCHEMATIC

RTTY ELECTRONICS  
 TELETYPE-Sales-Service-Parts  
 PO Box 20101 El Sobrante, Ca.  
 94820. (510)222-3102  
 mr\_rtty@pacbell.net

ACTUAL & SCHEMATIC  
 WIRING DIAGRAM  
 FOR  
 LCXB803, 804, 805  
 806, 808, 813  
 TRANSMITTER BASE

APPROVALS  
 D AND R E OF M  
 H.S.K. [Signature]

E-NUMBER  
 PROD. NO. 4348 WD  
 DATE 5-1-63  
 P.D. FILE NO. 1-64 151-219A  
 DRAWN RJP CHKD. [Signature]  
 ENGD. GEW APPD.

TELETYPE  
 CORPORATION

4348 WD