

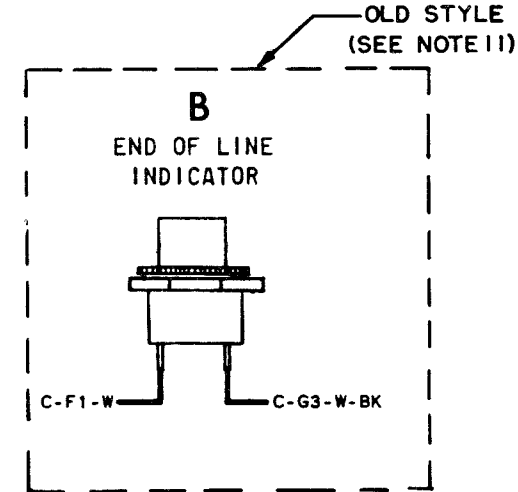
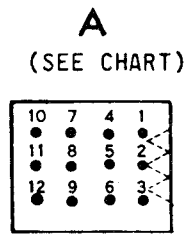


- NO. NOTES
1. WIRING LEGEND:
    - DISTANT TERMINATING AREA
    - DISTANT TERMINATING DESIGNATION
    - C-K3-Y-G — WIRE COLOR CODE
  2. COLOR CODE:
 

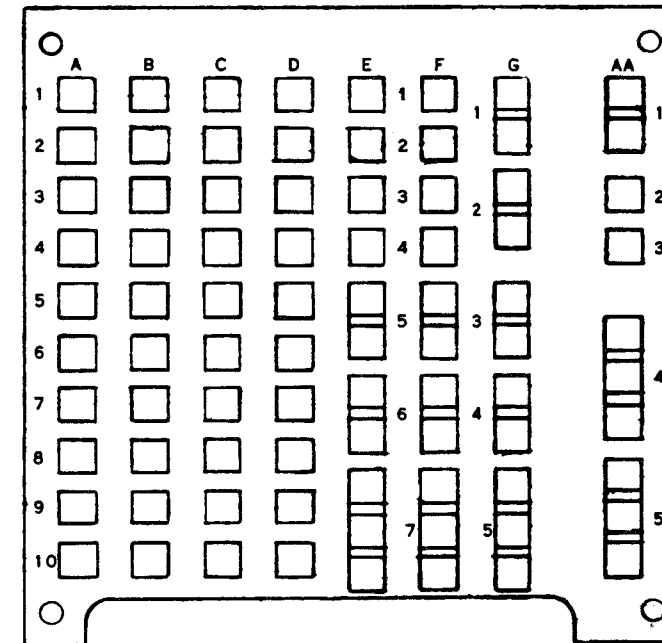
W - WHITE	P - PURPLE
BK - BLACK	G - GREEN
O - ORANGE	R - RED
BL - BLUE	S - SLATE
Y - YELLOW	BR - BROWN
  3. UNIT WIRED FOR 115 VOLTS, 50 TO 60 CYCLE POWER INPUT ONLY.
  4. RECEPTACLES VIEWED FROM WIRING SIDE.
  5. \* ASTERISK FOLLOWING WIRE COLOR INDICATES 18 GAGE WIRE, ALL OTHER 24 GAGE WIRE.
  6. IN EARLY UNITS THIS WIRE COLOR IS BR-G.
  7. ASSOCIATED CABLES:
    - 193460 - MAIN CABLE ASSEMBLY
    - 193461 - CALL CONTROL CABLE ASSEMBLY
    - 193462 - PANEL CABLE ASSEMBLY
  8. CONNECT EITHER LEAD OF BELL TO AA-2 AND THE REMAINING LEAD TO AA-4 AS INDICATED WHEN THE LESU IS INSTALLED.
  9. ALL COMPONENT LEADS EXCEPT THE 182520 SILICON RECTIFIERS ARE COVERED BY 60340RM VINYL GLASS TUBING.
  10. ASSOCIATED WIRING DRAWING 323609 (SIGNAL REGENERATOR CARD)
  11. SHOWS WIRING WHEN END-OF-LINE LIGHT IS ON PANEL ADJACENT TO KEYBOARD.
  12. SHOWS WIRING WHEN END-OF-LINE LIGHT IS ON UPPER COVER AT TOP OF LINE GUIDE SHAFT.
  13. THIS SCHEMATIC SYMBOL DESIGNATES EITHER OF THE INTERCHANGEABLE PARTS BELOW:
    - 171541
    - 182520
    - CATHODE END.
  14. 27KΩ RESISTOR IS NOT PRESENT ON SOME SETS.

LEADS CONNECTED TO WIRING FIELDS		
TERMINAL DESIG.	TERMINATING POINT ON CONN.	COLOR
C-9A	R1	W-Y
C-8A	R2	BR
C-5G	R3	BL
C-4C	R4	W-O-G
C-7J	R5	W-BK-R
C-3B	R6	O-G
C-7F	R7	O-S
C-8C	R8	P
C-8B	R9	W
C-6B	R10	W-G
C-4B	R11	W-P
C-4H	R12	G
C-2AA	R17	W-BL
C-7B	R18	BK-S
C-5A	R21	Y
C-10A	R23	W-R
C-6H	R24	W-BR
C-5B	R25	BK
C-6A	R29	BR-Y
C-3A	R34	BK-G
C-10C	R35	R-BL
C-5F	R36	R-Y
C-2A	R37	BK-BR
C-1A	R38	R
C-1B	R39	BL-S
C-4J	R40	Y-G
C-7A	R41	BL-G
C-5G	R44	W-O
C-7J	R45	G-S
C-5AA	R50	S
C-1G	F2	BK
C-1K	F1	BR
C-2L	F3	W-BR
C-1G	F4	W
C-5G	F5	W-G
C-6K	F6	BK-G
C-4G	F7	R
C-1F	F8	Y
C-4AA	F17	O*
C-1AA	F32	R*
C-5AA	F50	G*
C-2K	F18	W-O-G

LEADS CONNECTED TO WIRING FIELDS		
TERMINAL DESIG.	TERMINATING POINT ON CONN.	COLOR
C-5G	A1	BR-BL
C-5J	A2	W-O
C-5G	A3	BR-G
C-4K	A4	W-R
C-5M	A6	BL
C-5K	A7	W-BL
C-7F	A10	G
C-1H	A11	R-G
C-2B	A12	O
C-2B	X1	BL
C-2A	X3	BK
C-3G	X4	BR
C-5J	X5	O-BR
C-5F	X6	W-Y
C-5B	X7	W-S
C-3N	X8	BL-S
C-5H	X9	W
C-10A	X10	Y-G
C-3A	X11	O-G
C-6A	X12	W-O
C-4C	X13	Y
C-1L	W1	BR-S
C-9A	W3	R-Y
C-8A	W4	R-G
C-6M	W5	BL-G
C-1AA	W6	R*
C-4AA	W7	O*
C-5AA	W8	G*
C-4L	W9	BR-G
C-5L	W10	BK-BL
C-1N	W11	BK-R
C-3L	W12	W-O-G
C-7B	W13	W
C-10D	V1	O-S
C-9D	V2	BR-Y
C-1G	V3	O
C-3H	V4	W-BK-R
C-4H	V5	W-G
C-3K	V6	W-O-BL
C-5A	V7	W-BL
C-8B	V8	R-BL
C-10C	V9	W-R
C-1B	V10	G
C-1A	V11	S
C-4F	V12	W-P
C-3B	V13	W-BR
C-8C	V14	BK-O
C-J3	V15	BK-G



C  
MAIN WIRING FIELD  
(SEE SHEET 4)



NOTE 6

# 5821WD

REVISIONS		
ISSUE	DATE	AUTH. NO.
F 7	4-3-63	76412
6 8	9-26-63	77904
H 9	1-15-64	79804
10	6-15-64	82025
11	2-2-65	85509
12	8-18-65	87498
13	9-2-65	88068
14	10-27-66	91933-1
15	8-18-67	94324-B

SEE ISSUE CONTROL RECORD FOR COMPLETE LIST OF SHEETS COMPRISING THIS W.D.

SHEET 1

ACTUAL WIRING DIAGRAM FOR ELECTRICAL SERVICE UNIT LESU300 FOR MODEL 35 KSR

APPROVALS	
D AND R	E OF M
E-NUMBER	
PROD. NO.	5821WD
DATE 5-24-62	
P.D. FILE NO. 1-159.151AA	
DRAWN W.D.	CHKD. G.J.L.
ENGD. W.E.C.	APPD.
<b>TELETYPE CORPORATION</b>	
<b>5821WD</b>	

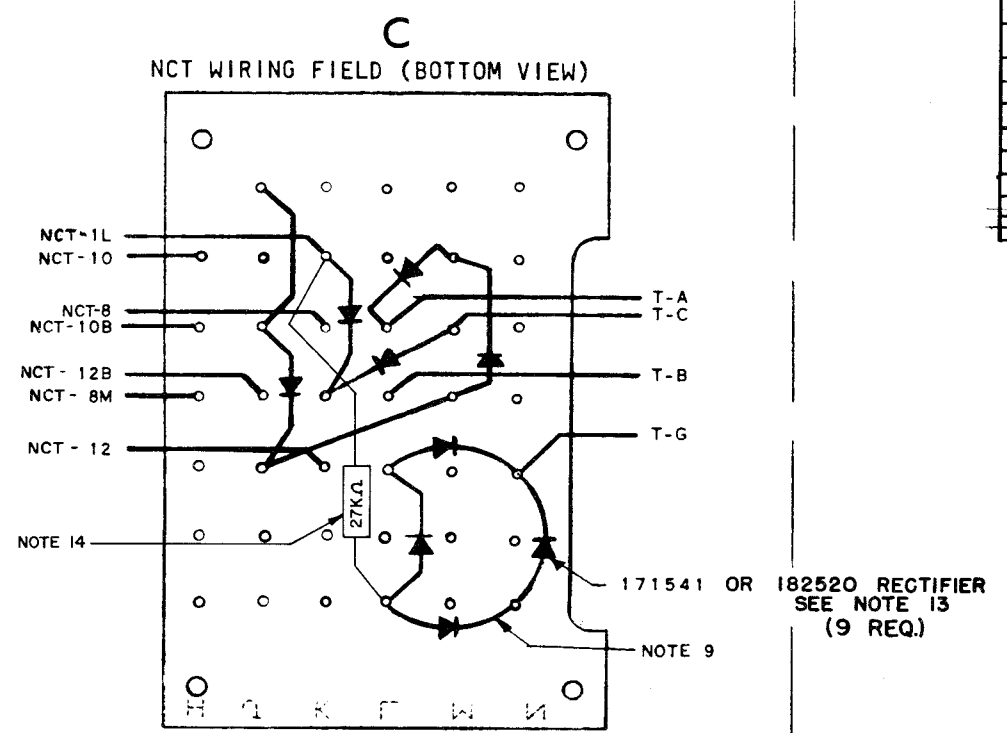
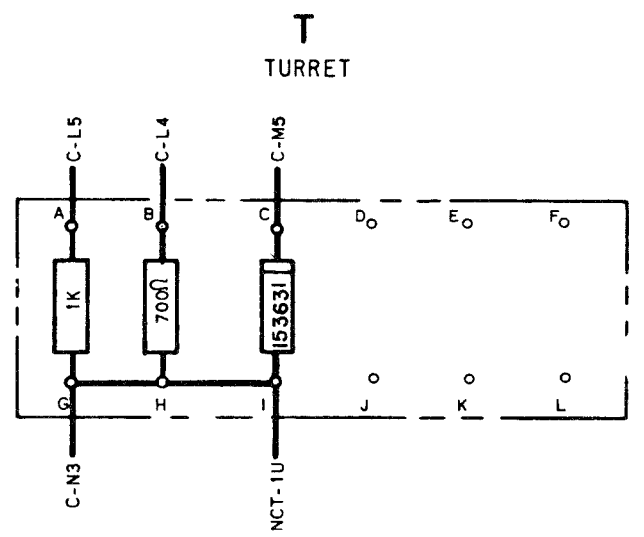
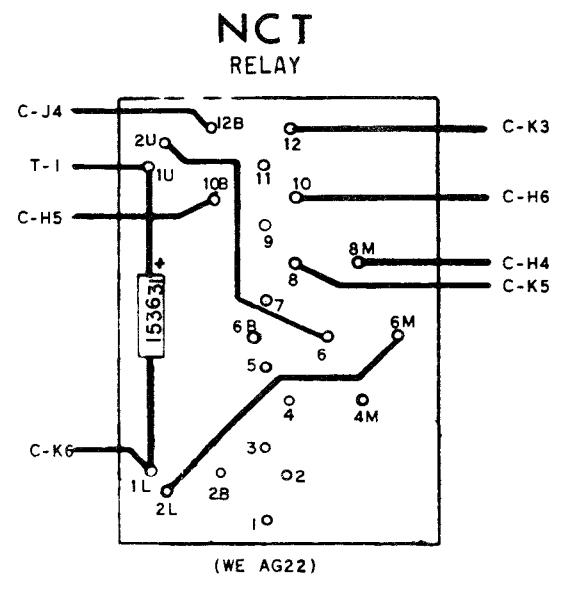
# 5821WD

## REVISIONS

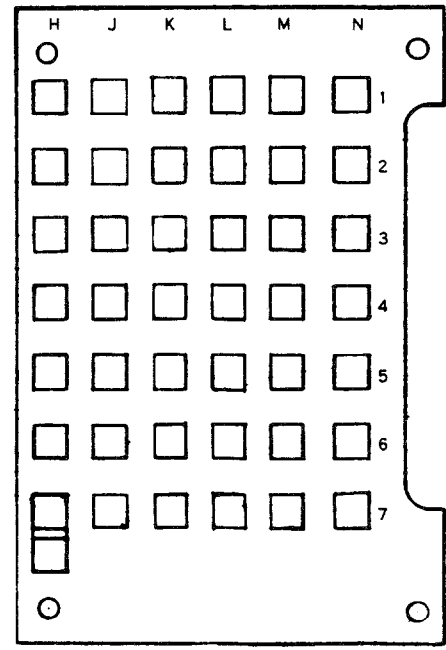
ISSUE	DATE	AUTH. NO.
F 7	4-3-63	76412
G 8	9-26-63	77904
H 9	1-15-64	79804
10	6-15-64	82025
11	2-2-65	85509
12	8-18-65	87498
13	9-2-65	88068
14	8-18-67	94324-B

SEE SHEET 1 FOR NOTES.

NOTE: REVISION INFORMATION MUST ALSO BE REFLECTED ON THE ISSUE CONTROL RECORD, WHICH IS PART OF THIS W.D.



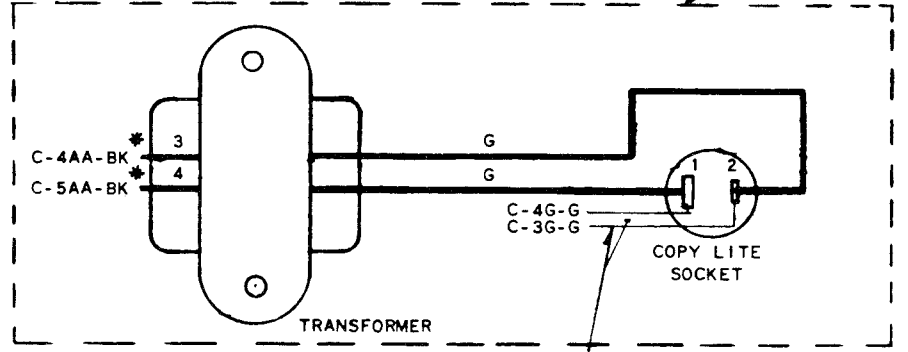
**C**  
NCT WIRING FIELD  
(SEE SHEET 4)



**F**  
KEYBOARD CONNECTOR  
(SEE CHART)

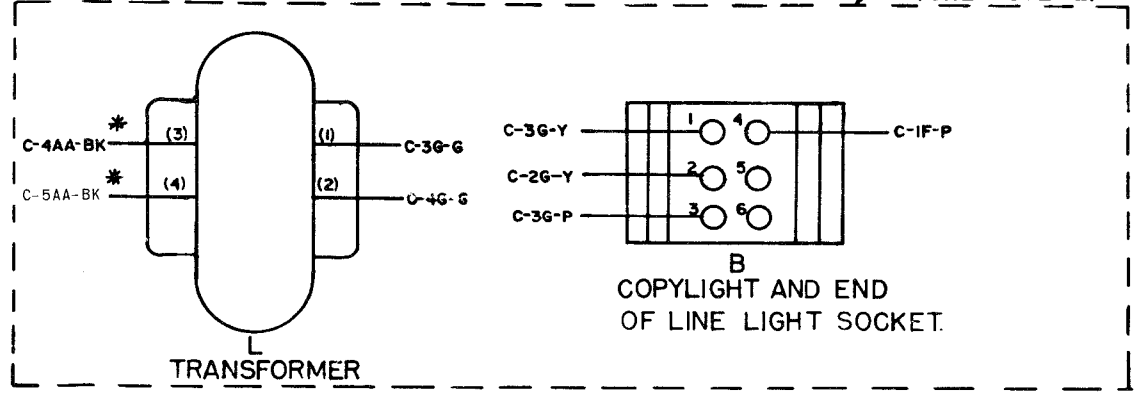
● 34	18	1
○ 35	19	2
● 36	20	3
● 37	21	4
● 38	22	5
○ 39	23	6
○ 40	24	7
○ 41	25	8
○ 42	26	9
○ 43	27	10
○ 44	28	11
○ 45	29	12
○ 46	30	13
○ 47	31	14
○ 48	32	15
○ 49	33	16
○ 50		17

**L**  
COPYLIGHT TRANSFORMER ASSEMBLY  
(OLD STYLE (SEE NOTE 11))



193466 WIRE ASSEMBLY, ELECTRICAL

**L**  
NEW STYLE  
(SEE NOTE 12)



SEE ISSUE CONTROL RECORD FOR COMPLETE LIST OF SHEETS COMPRISING THIS W.D.

SHEET 2

ACTUAL WIRING DIAGRAM FOR ELECTRICAL SERVICE UNIT LESU300 FOR MODEL 35 KSR

### APPROVALS

D AND R	E OF M
---------	--------

E-NUMBER	
PROD. NO.	5821WD
DATE	5-24-62
P.D. FILE NO.	I-159.151AA
DRAWN	W.D.
CHKD.	G.J.L.
ENGD.	W.E.C.
APPD.	

TELETYPE CORPORATION

# 5821WD

SEE SHEET 1 FOR NOTES.

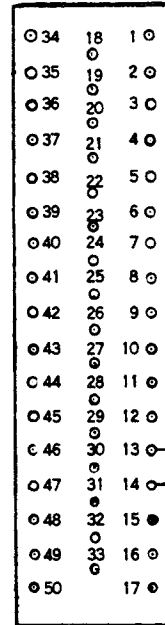
NOTE: REVISION INFORMATION MUST ALSO BE REFLECTED ON THE ISSUE CONTROL RECORD, WHICH IS PART OF THIS W.D.

5821WD

REVISIONS

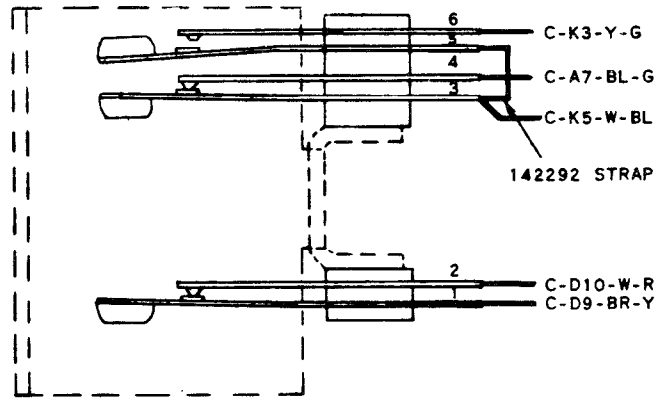
ISSUE	DATE	AUTH. NO.
F 7	4-3-63	76412
G 8	9-26-63	77904
H 9	1-15-64	79804
I 10	6-15-64	82025
J 11	2-2-65	85509
K 12	8-18-65	87498
L 13	9-2-65	88068

**R**  
LP CONNECTOR  
(SEE CHART)



193465 STRAP

**S**  
193431  
KEY ASSEMBLY

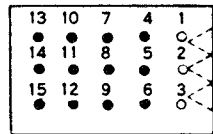


LESU GND.



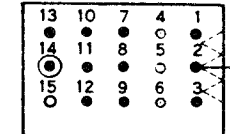
193479 STRAP

**V**  
(SEE CHART)



(NUMBERED-8)

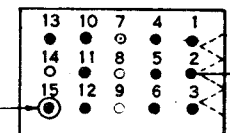
**W**  
(SEE CHART)



(NUMBERED-7)

X2-P

**X**  
(SEE CHART)



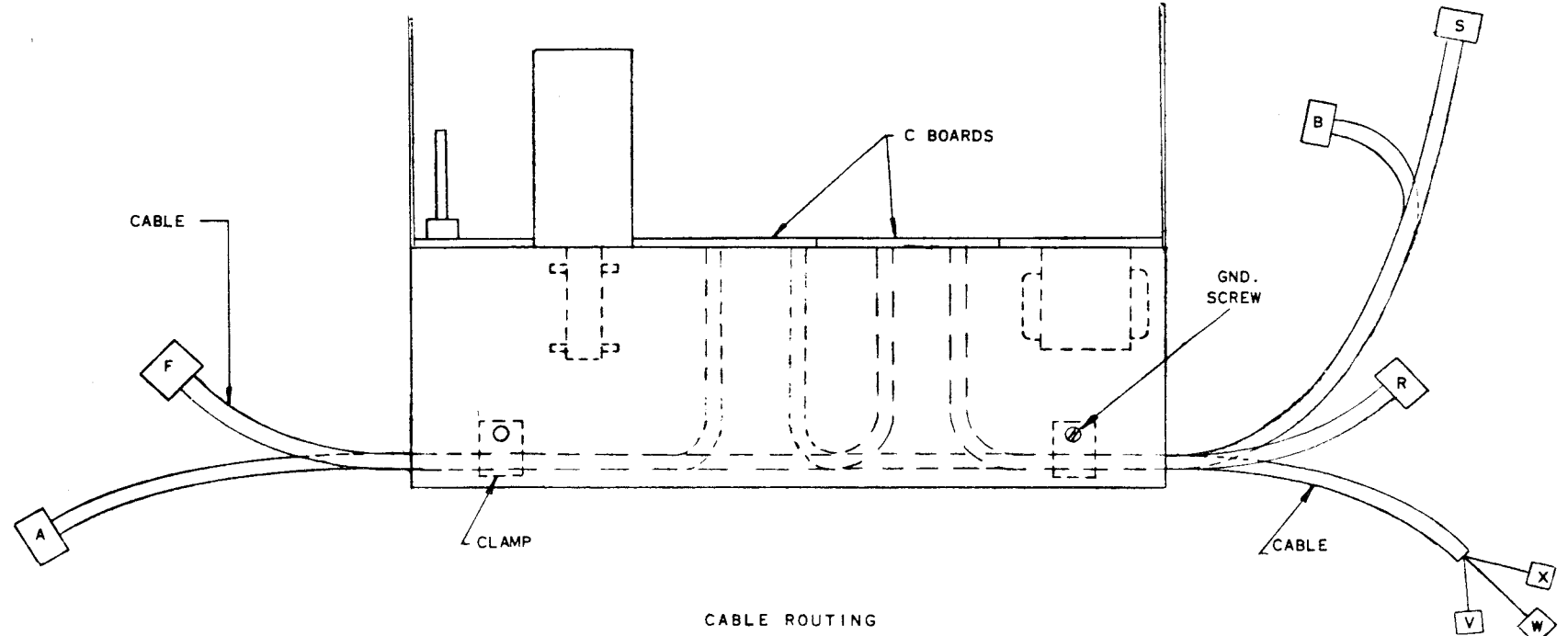
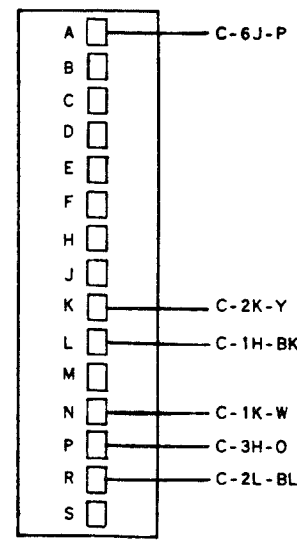
(NUMBERED-6)

195614  
KEYPIN  
(2 PLS.)

CALL CONTROL  
CONNECTORS

W2-P

**A B**  
CARD CONNECTOR  
(REGENERATOR)



CABLE ROUTING

SEE ISSUE CONTROL RECORD FOR COMPLETE LIST OF SHEETS COMPRISING THIS W.D.

SHEET 3

ACTUAL WIRING DIAGRAM FOR ELECTRICAL SERVICE UNIT LESU300 FOR MODEL 35 KSR

APPROVALS

D AND R	E OF M
---------	--------

E-NUMBER	
PROD. NO.	5821WD
DATE	5-24-62
P.D. FILE NO.	I-159.151AA
DRAWN	W.D.
CHKD.	G.J.L.
ENGD.	W.E.C.
APPD.	

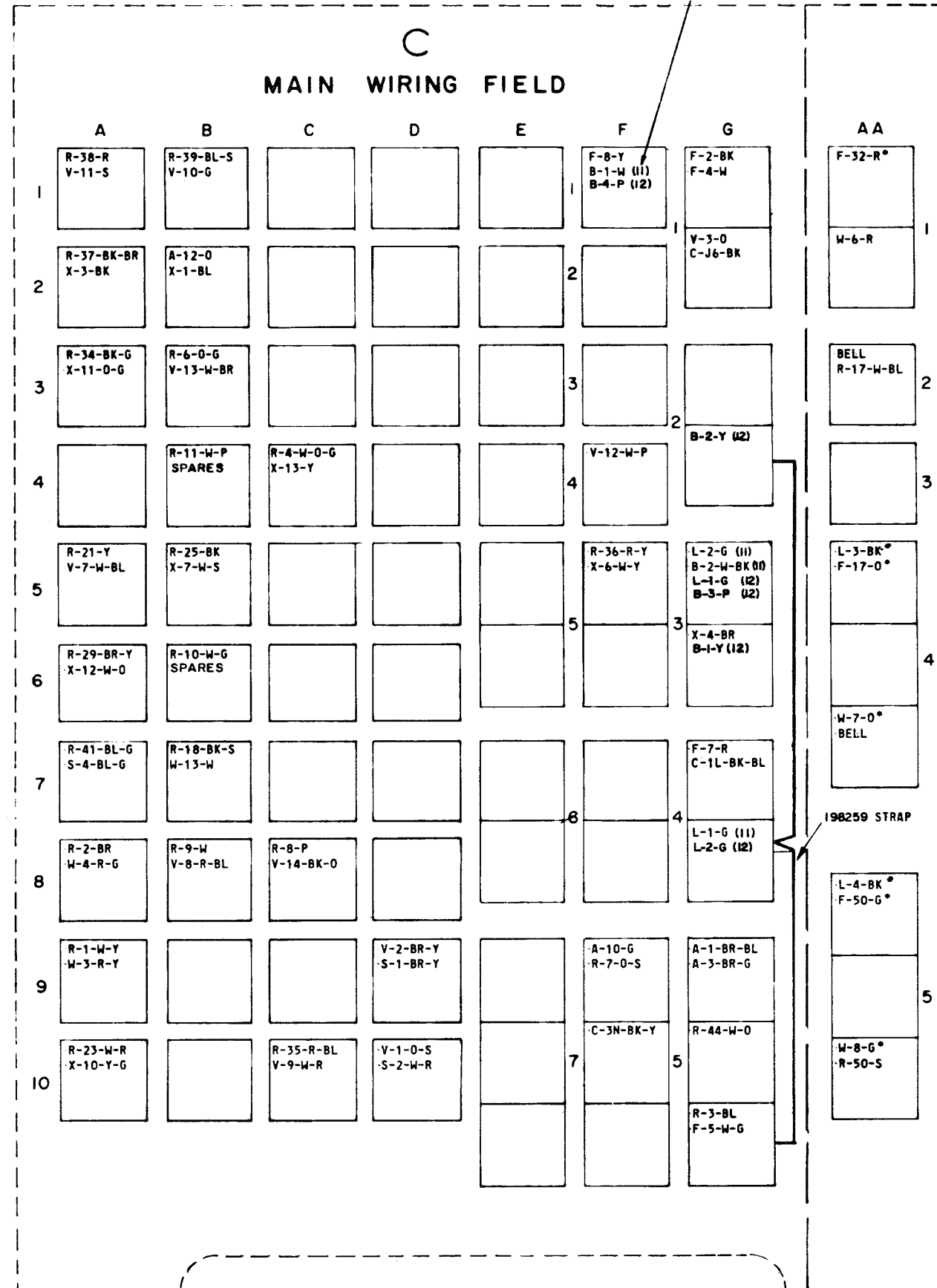
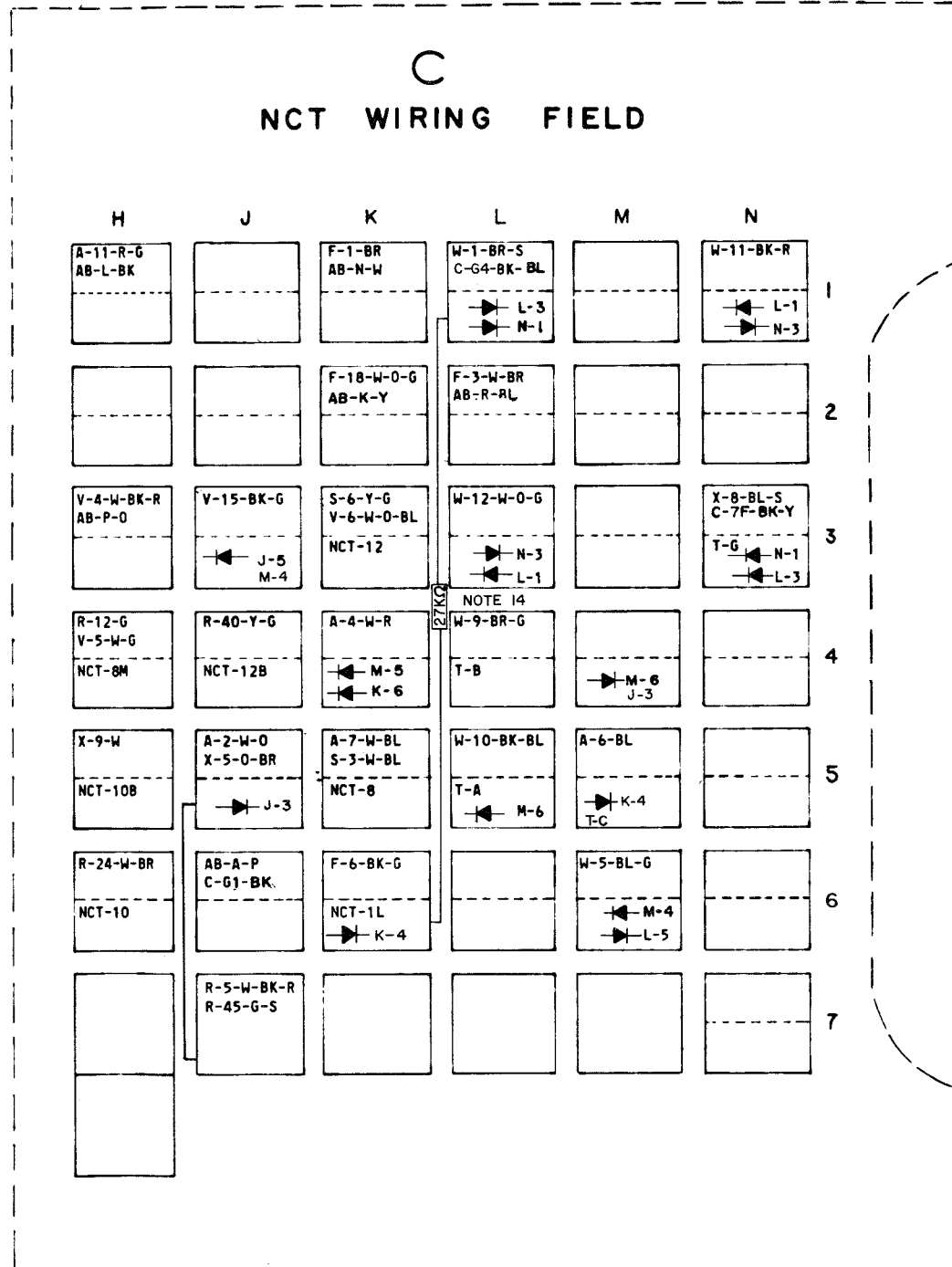
TELETYPE CORPORATION

5821WD

# 5821WD

REVISIONS		
ISSUE	DATE	AUTH. NO.
7	9-26-63	77904
8	6-17-64	82025
9	1-11-65	85717
10	2-2-65	85509
11	6-23-65	87210
12	9-2-65	88068
13	8-18-67	94324-B

SEE NOTES 11 & 12, SHEET 1



SEE ISSUE CONTROL RECORD FOR COMPLETE LIST OF SHEETS COMPRISING THIS W.D.

SHEET 4

ACTUAL WIRING DIAGRAM FOR ELECTRICAL SERVICE UNIT LESU360 FOR MODEL 35 KSR

APPROVALS

D AND R: *HJK* E OF M: *[Signature]*

E-NUMBER

PROD NO 5821WD

DATE 9-11-63

P.D. FILE NO 1-159.151AA

DRAWN GLZ.

CHKD

ENGD G.E.W.

APPD.

TELETYPE CORPORATION

# 5821WD