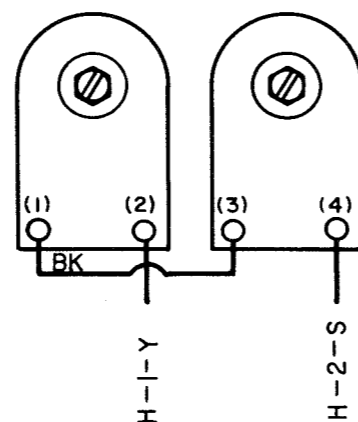


ISSUE	DATE	AUTH NO.

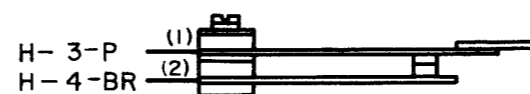
- NO. NOTES:
- WIRING LEGEND:
 - COLOR CODE:

R - BL - RED - BLUE	W - BK - WHITE - BLACK
BK - BLACK	W - BR - WHITE - BROWN
BR - BROWN	W - R - WHITE - RED
R - RED	W - O - WHITE - ORANGE
O - ORANGE	W - Y - WHITE - YELLOW
Y - YELLOW	W - G - WHITE - GREEN
G - GREEN	W - BL - WHITE - BLUE
BL - BLUE	W - P - WHITE - PURPLE
P - PURPLE	W - S - WHITE - SLATE
S - SLATE	R - G - RED - GREEN
W - WHITE	R - Y - RED - YELLOW
 - CONNECTORS VIEWED FROM SOLDER TERMINAL ENDS
 - ALL CONTACTS SHOWN IN UNOPERATED POSITION.
 - THE NUMBERS ENCLOSED BY PARENTHESES ARE USED FOR REFERENCE AND ARE NOT NECESSARILY SHOWN ON THE PARTS.
 - 115 VAC. ± 10% POWER TO BE USED ON CLUTCH TRIP MAGNET ASSEMBLY CIRCUIT (256 M COIL ASSEMBLIES). IF D. C. IS USED, CURRENT MUST BE LIMITED TO 100 MA BY AN EXTERNAL RESISTANCE (COIL RESISTANCE = 74 Ω EACH). FOR 120 V.DC ± 10% POWER, EXTERNAL RESISTANCE OF 1000 Ω IS REQUIRED FOR 50 V.DC. ± 10% POWER, AN EXTERNAL RESISTANCE OF 350 Ω IS REQUIRED.

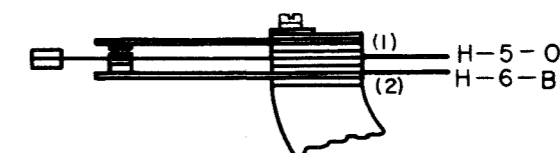
A
TRANSMITTER DISTRIBUTOR
CLUTCH MAGNETS



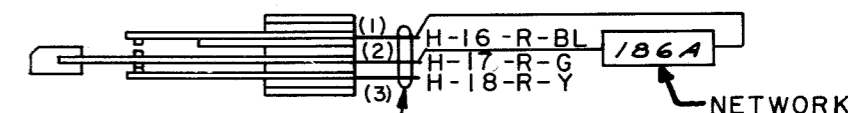
B
CONTROL LEVER
CONTACT ASSEMBLY



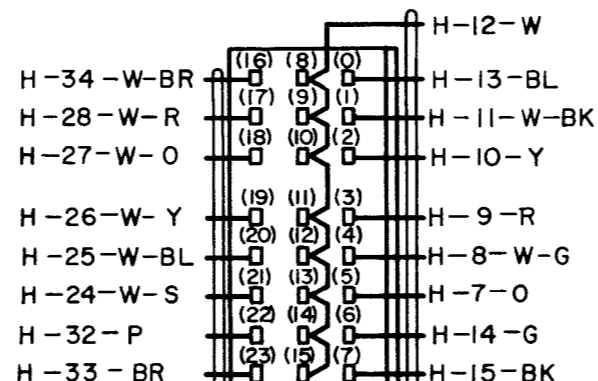
C
TAPE - OUT
CONTACT ASSEMBLY



N
AUXILIARY CONTACTS NO.2

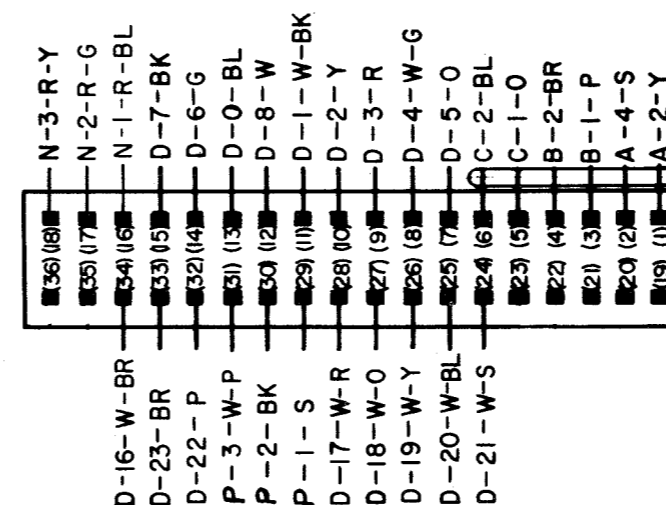
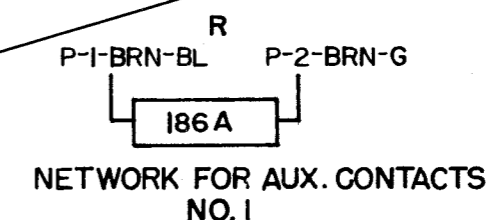
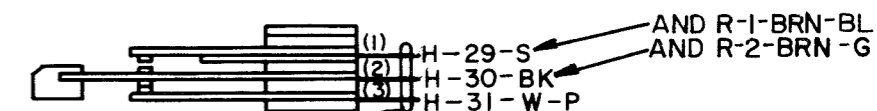


D
MULTIPLE WIRE
OUTPUT CONTACTS



194509 CABLE ASSEMBLY

P
AUXILIARY CONTACTS NO.1



CABLE ASSEMBLY
173392

H
CONNECTOR

RTTY ELECTRONICS
TELETYPE=Sales-Service-Parts
PO Box 20101 El Sobrante, Ca.
94820. (510)222-3102
mr_rtty@pacbell.net

ACTUAL
WIRING DIAGRAM
LX801
MULTI-WIRE
TRANSMITTER

APPROVALS

D AND B E OF M

E-NUMBER

PROD. NO. 5953 W.D.

DATE: 9-11-62

P.D. FILE NO. 3-95AAA

DRAWN. J.V.K. CHKD.

ENGD. P.H.B. APPD.

TELETYPE
CORPORATION