

REVISIONS

| ISSUE | DATE    | AUTH. NO.    |
|-------|---------|--------------|
| A     | 1-31-64 | 80196        |
| B3    | 2-6-64  | 80198        |
| 4     | 4-20-65 | 86885        |
| 5     | 7-29-65 | 88100 RECORD |

NOTE:  
REVISION INFORMATION MUST ALSO  
BE REFLECTED ON THE ISSUE  
CONTROL RECORD, WHICH IS PART  
OF THIS W.D.

- NO. NOTES
1. WIRING LEGEND:
  2. COLOR CODE:  

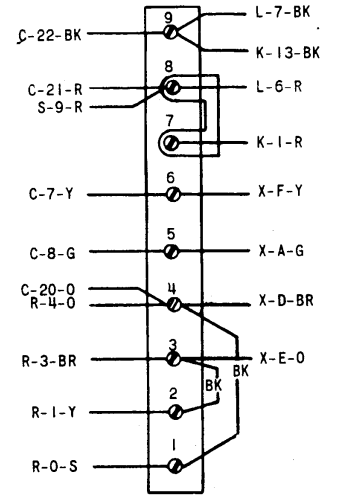
|            |            |
|------------|------------|
| BK - BLACK | BR - BROWN |
| BL - BLUE  | R - RED    |
| Y - YELLOW | P - PURPLE |
| W - WHITE  | S - SLATE  |
| O - ORANGE | G - GREEN  |
  3. UNIT WIRED FOR 117 VOLTS. 50 TO 60 CYCLE AC POWER INPUT ONLY.
  4. CONNECTORS VIEWED FROM SOLDERED TERMINAL ENDS.
  5. CIRCUITS SHOWN FOR .060 AMP. NEUTRAL SIGNAL LINE OPERATION. FOR .020 AMP. OPERATION REMOVE AND ADD CONNECTIONS AS TABULATED BELOW.
 

| SIG. LINE CURRENT | CONNECTION REMOVED | CONNECTIONS ADDED |
|-------------------|--------------------|-------------------|
| .020 AMP.         | K1-K2              |                   |

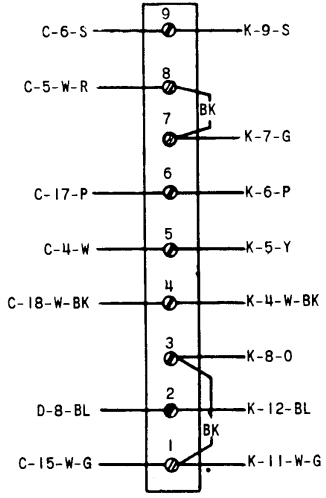
FOR .020 AMP. OPERATION OF SELECTOR MAGNET DRIVER, REFER TO 4445WD.
  6. RECTIFIER SHOWN CONTROLLED BY POWER SWITCH.  
FOR CONTINUOUS OPERATION, REMOVE LEAD L-10-BK FROM TERMINAL E-2 AND CONNECT TO TERMINAL E-1.
  7. LINE SHUNT RELAY SHOWN CONTROLLED BY POWER SWITCH AND SHUNTING LINE RELAY COIL AND KEYBOARD AND TRANSMITTER DISTRIBUTOR SIGNAL GENERATOR.
  8. THE SPARE LEADS FROM THE TRANSMITTER DISTRIBUTOR UNIT CONNECTOR PLUG ARE TERMINATED IN THE RIGHT END OF THE ELECTRICAL SERVICE UNIT. THE SPARE LEADS FROM THE TYPING UNIT PLUG ARE TERMINATED IN THE LEFT END OF THE ELECTRICAL SERVICE UNIT.
  9. ADD STRAP BETWEEN C10 & C11 IF SIGNAL LINE BREAK SWITCH IS NOT USED.
  10. SPARE LEAD FROM U18 IS RESERVED FOR POLAR OPERATION OF KEYBOARD AND TRANSMITTER DISTRIBUTOR SIGNAL GENERATORS.
  11. TERMINALS C143 TO C148 RESERVED FOR CABINET LAMP OPERATION.
  12. TERMINALS C1 TO C3 RESERVED FOR CUSTOMER USE.
  13. TERMINALS C121 - C122 RESERVED FOR PERFORATOR LO-TAPE SWITCH.
  14. CONTACTS SHOWN IN UNOPERATED OR DE-ENERGIZED POSITION.
  15. SYNC. PULSE CURRENT SHOWN SUPPLIED FROM SET RECTIFIER, TO PULSE SET EXTERNALLY REMOVE STRAPS AND CONNECT EXTERNAL SOURCE IN ACCORDANCE WITH INSTALLATION REQUIREMENTS:  

|             |            |
|-------------|------------|
| C124 - C131 | C21 - C131 |
| C125 - C142 | C22 - C142 |
  16. FOR SCHEMATIC WIRING DIAGRAM SEE 7016WD.

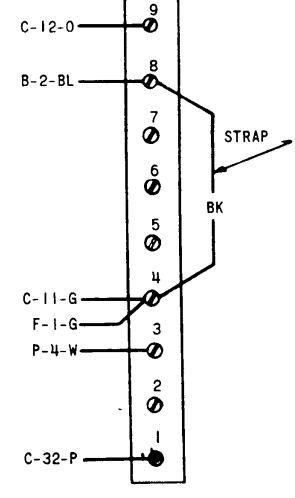
**A**  
SELECTOR MAGNET TERMINAL BLOCK



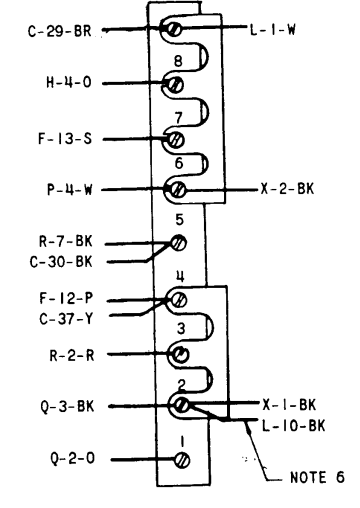
**B**  
LINE TEST KEY TERMINAL BLOCK



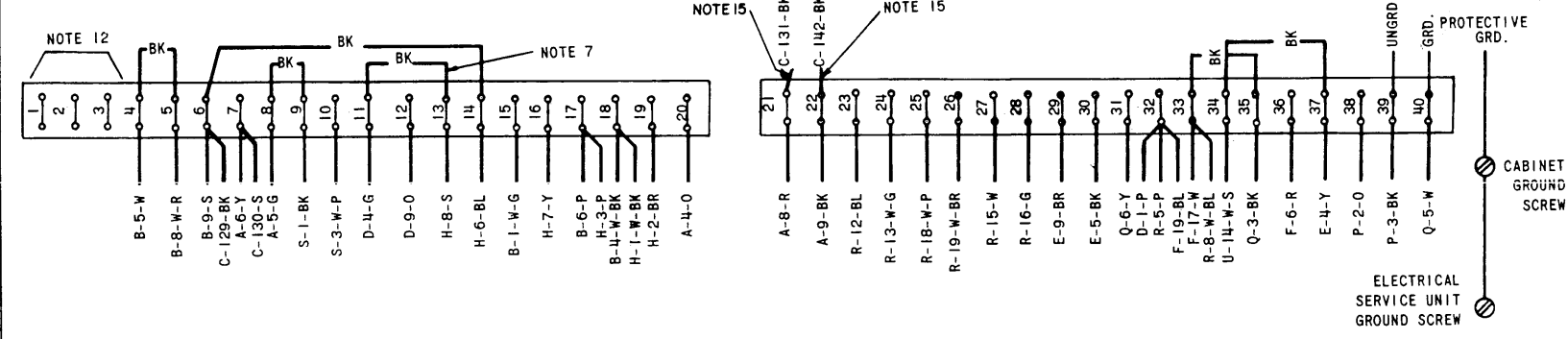
**D**  
MOTOR CONTROL TERMINAL BLOCK



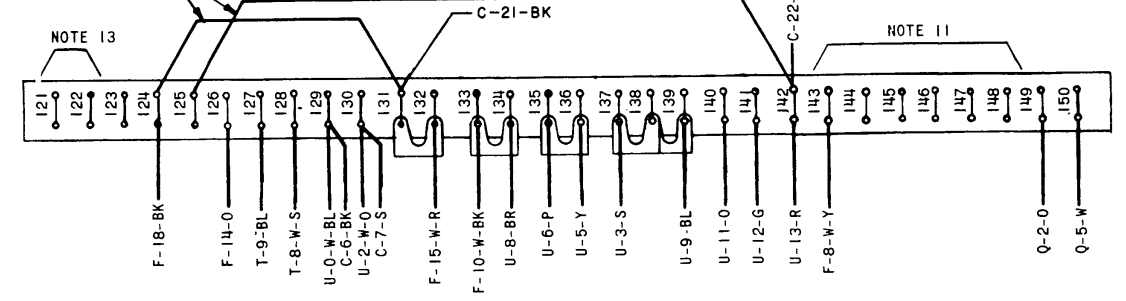
**E**  
POWER TERMINAL BLOCK



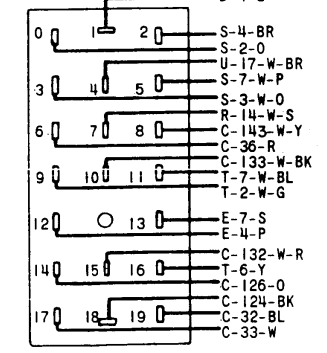
**C**  
CABINET TERMINAL BLOCK



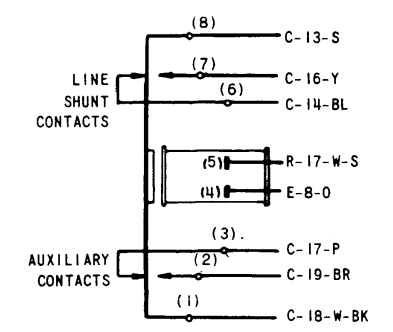
**C**  
CABINET TERMINAL BLOCK



**F**  
KEYBOARD CONNECTOR FEMALE



**H**  
LINE SHUNT RELAY



SEE ISSUE CONTROL RECORD FOR COMPLETE LIST OF SHEETS COMPRISING THIS W.D.

SHEET 1 OF 2

ACTUAL WIRING DIAGRAM FOR MODEL 28 ELECTRICAL SERVICE UNIT LESU111

APPROVALS

D AND R: *[Signature]*  
E OF M: *[Signature]*

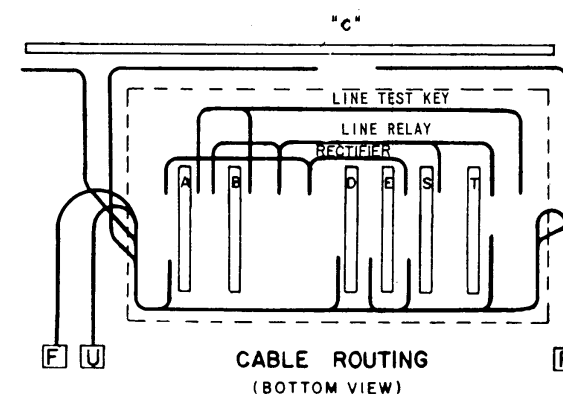
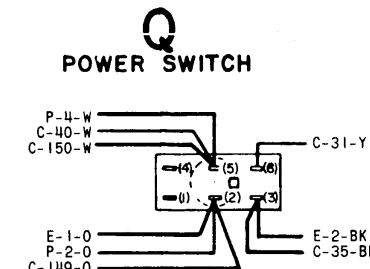
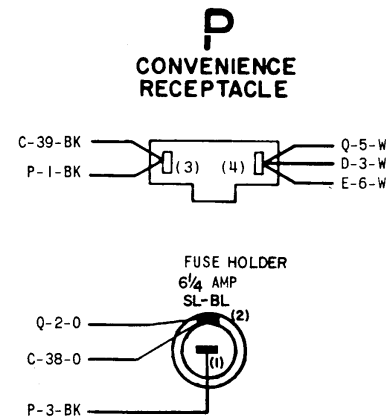
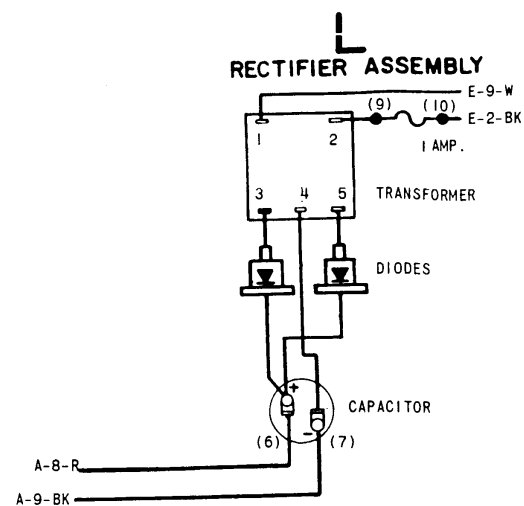
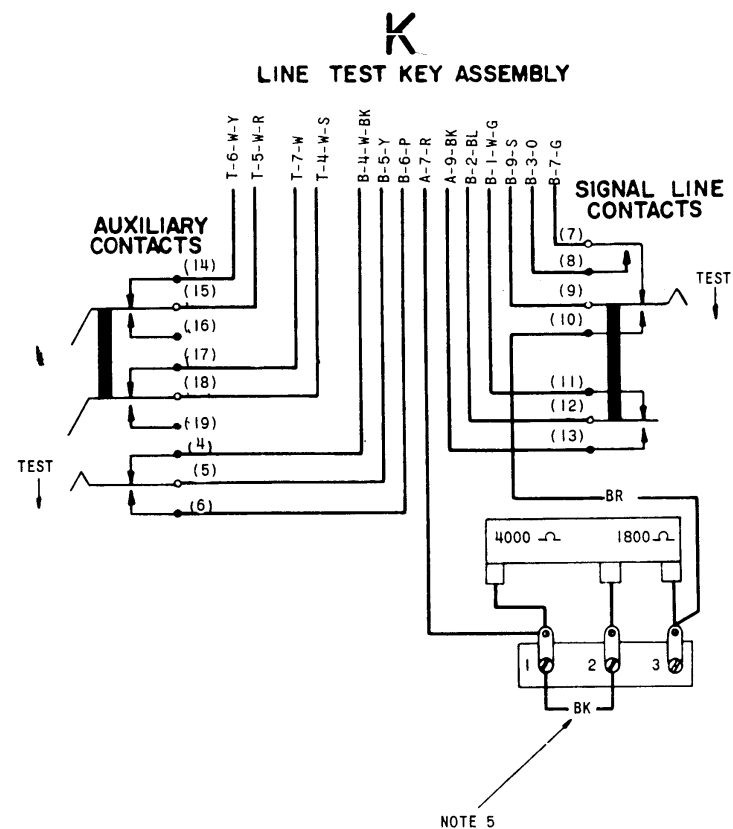
E-NUMBER  
 PROD. NO. 7015WD  
 DATE 8/20/63  
 P.D. FILE NO. 3-A65.219A  
 DRAWN JDB CHKD.  
 ENGD. RAF APPD.

TELETYPE CORPORATION

REVISIONS

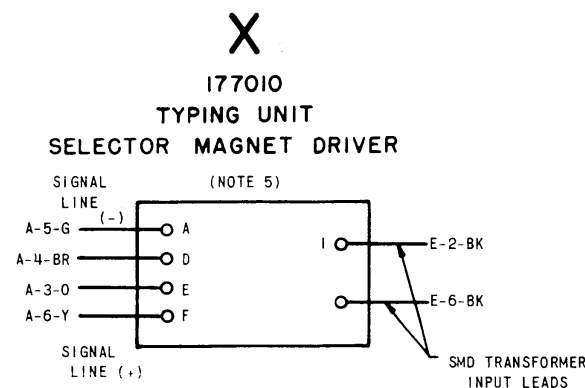
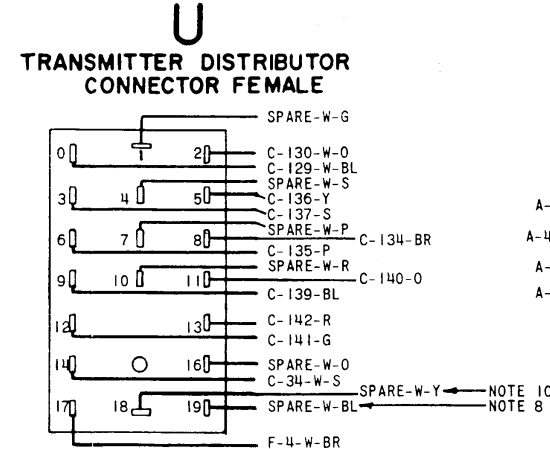
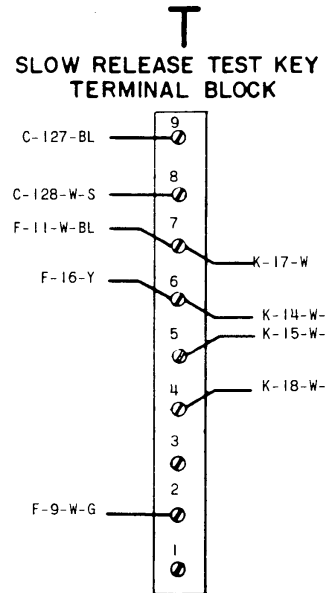
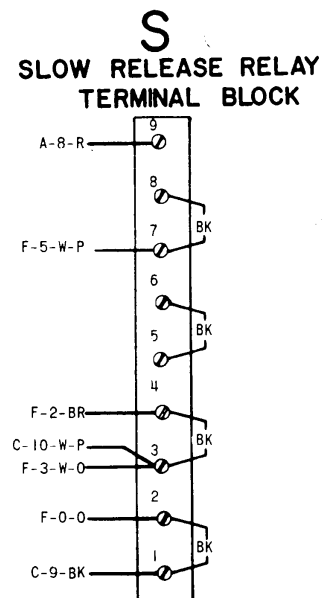
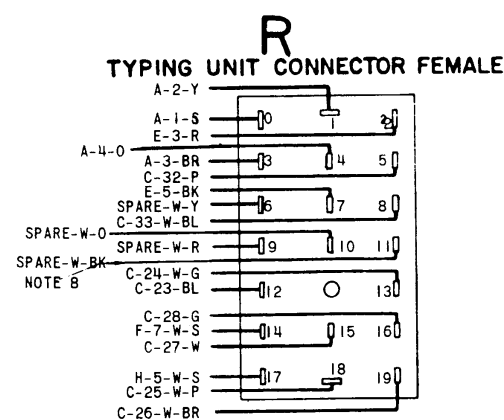
| ISSUE | DATE    | AUTH. NO. |
|-------|---------|-----------|
| A     | 1-31-64 | 80196     |
| B3    | 2-6-64  | 80198     |
| 4     | 4-20-65 | 86885     |
| 5     | 7-29-65 | 88100     |
| 6     | 4-26-66 | 90262     |

NOTE:  
REVISION INFORMATION MUST ALSO BE REFLECTED ON THE ISSUE CONTROL RECORD, WHICH IS PART OF THIS W.D.



SEE ISSUE CONTROL RECORD FOR COMPLETE LIST OF SHEETS COMPRISING THIS W.D.

SHEET 2



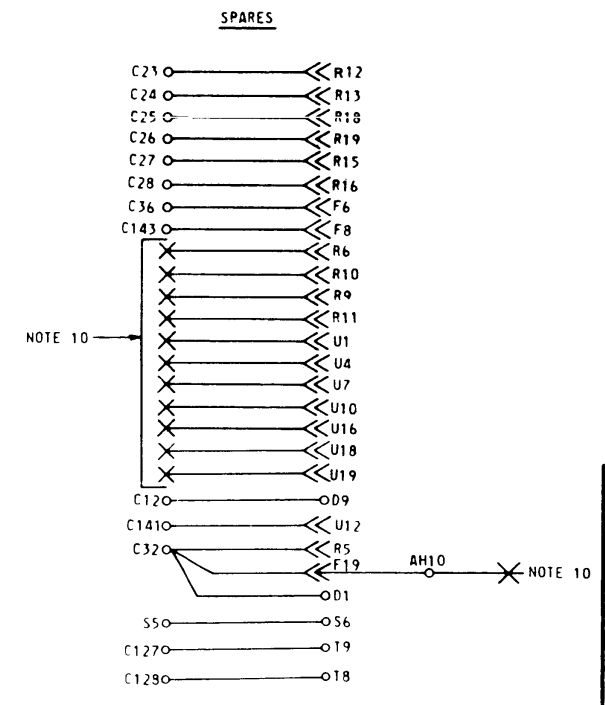
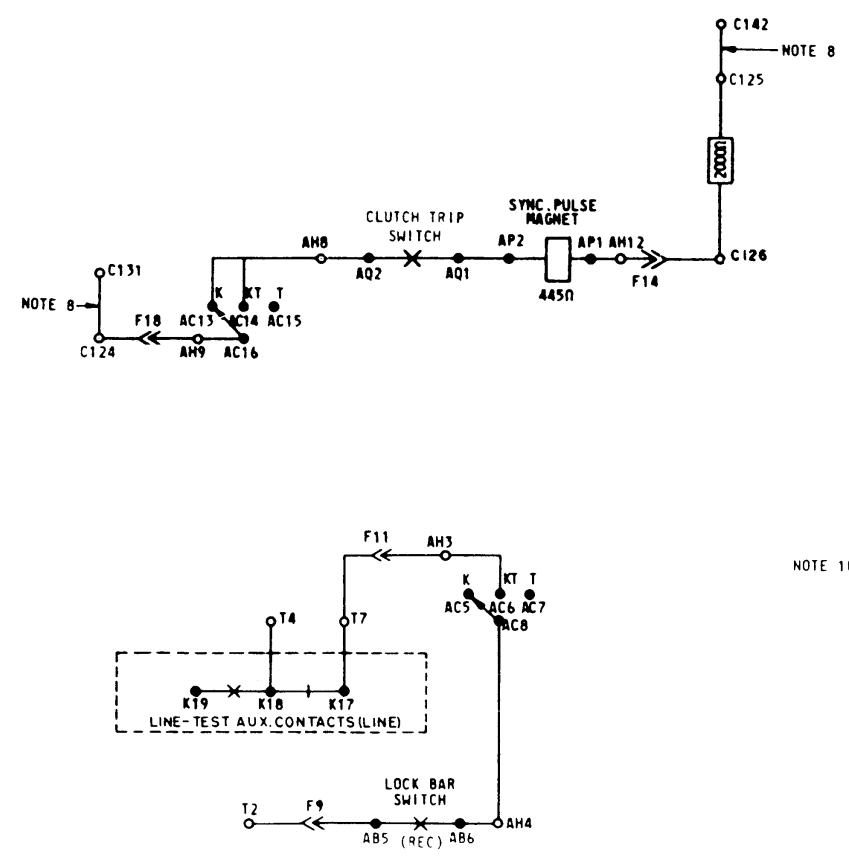
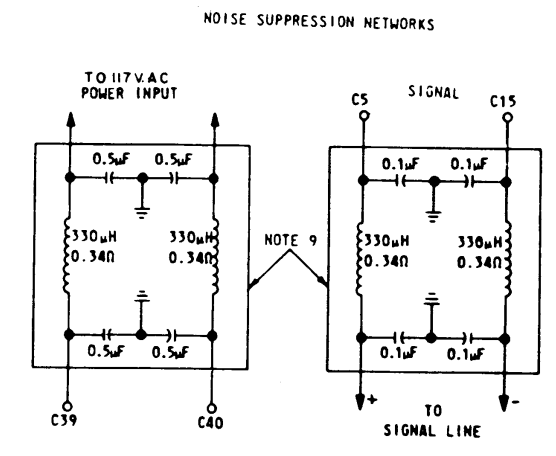
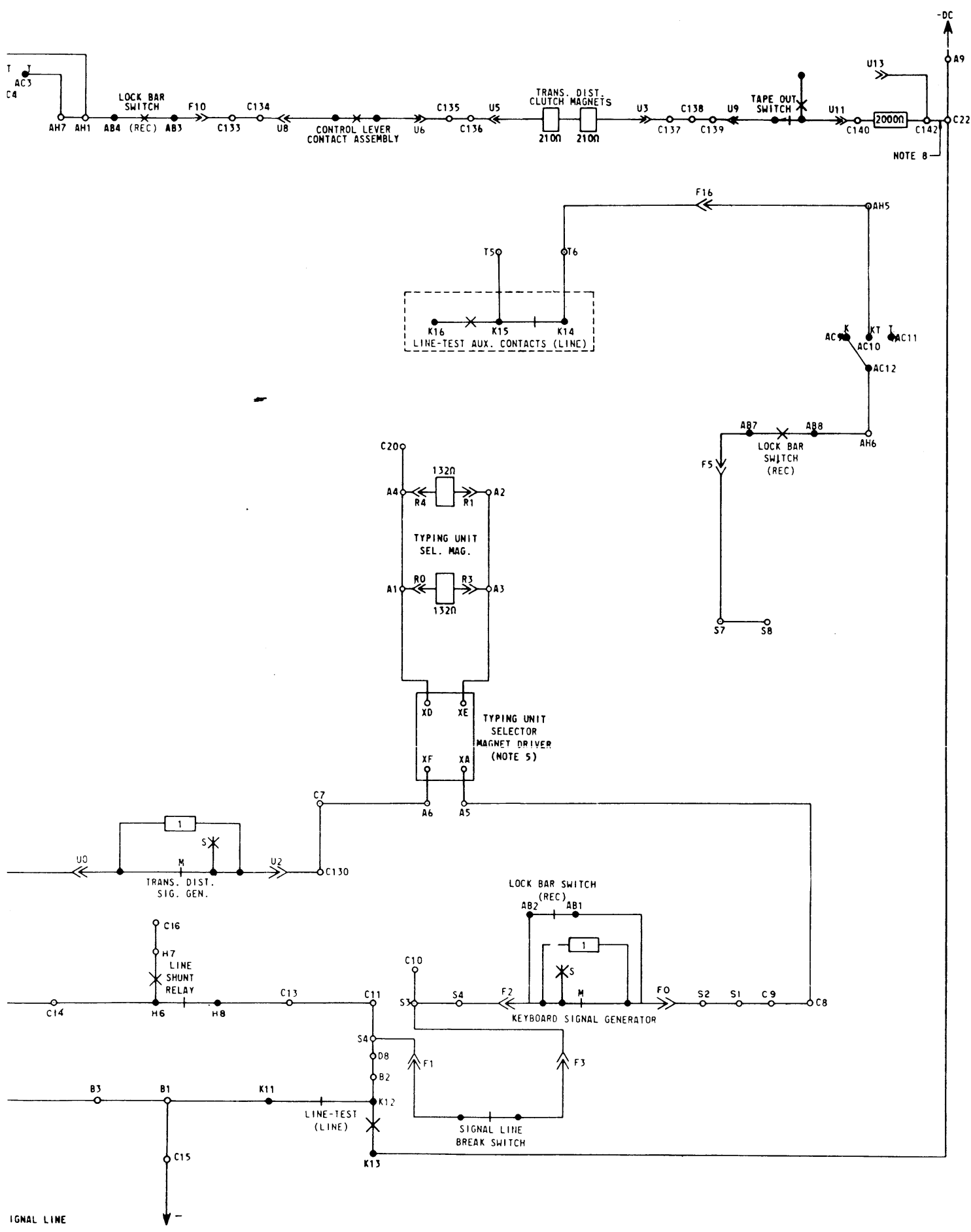
ACTUAL WIRING DIAGRAM FOR MODEL 28 ELECTRICAL SERVICE UNIT LESU111

APPROVALS

|            |           |
|------------|-----------|
| D AND R    | E OF M    |
| <i>HJK</i> | <i>CM</i> |

E-NUMBER  
PROD. NO. 7015WD  
DATE 8/20/63  
P.D. FILE NO. 3-A65.219A  
DRAWN JDB CHKD.  
ENGD. RAF APPD.

TELETYPE CORPORATION

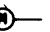
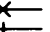


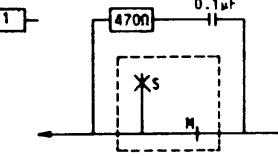


SCHEMATIC WIRING DIAGRAM  
 MODEL 28  
 AUTOMATIC SEND-RECEIVE SET  
 LESU111

APPROVALS

DATE: 8-23-63  
 P.B. FILE NO: 3-665-2190  
 DRAWN: JDB  
 CHECKED: RAF  
 APPROVED: JAP

TELETYPE CORPORATION  
 7016 WD

| NO.         | NOTES  |             |            |             |                 |        |                             |        |                |        |                  |        |                       |        |                   |
|-------------|--|-------------|------------|-------------|-----------------|--------|-----------------------------|--------|----------------|--------|------------------|--------|-----------------------|--------|-------------------|
| 1.          | FOR ACTUAL WIRING DIAGRAMS OF INDIVIDUAL UNITS SEE:<br><table border="1"> <thead> <tr> <th>WD. NO.</th> <th>UNIT</th> </tr> </thead> <tbody> <tr> <td>3264WD</td> <td>CABINET-LAAC200</td> </tr> <tr> <td>7015WD</td> <td>ELECT. SERVICE UNIT-LESU111</td> </tr> <tr> <td>6456WD</td> <td>KEYBOARD-LAK42</td> </tr> <tr> <td>2900WD</td> <td>MOTOR UNIT-LMU12</td> </tr> <tr> <td>3214WD</td> <td>PAGE TYPING UNIT-LP14</td> </tr> <tr> <td>3300WD</td> <td>TRANS. DIST.-LXD3</td> </tr> </tbody> </table>   | WD. NO.     | UNIT       | 3264WD      | CABINET-LAAC200 | 7015WD | ELECT. SERVICE UNIT-LESU111 | 6456WD | KEYBOARD-LAK42 | 2900WD | MOTOR UNIT-LMU12 | 3214WD | PAGE TYPING UNIT-LP14 | 3300WD | TRANS. DIST.-LXD3 |
| WD. NO.     | UNIT   |             |            |             |                 |        |                             |        |                |        |                  |        |                       |        |                   |
| 3264WD      | CABINET-LAAC200  |             |            |             |                 |        |                             |        |                |        |                  |        |                       |        |                   |
| 7015WD      | ELECT. SERVICE UNIT-LESU111  |             |            |             |                 |        |                             |        |                |        |                  |        |                       |        |                   |
| 6456WD      | KEYBOARD-LAK42   |             |            |             |                 |        |                             |        |                |        |                  |        |                       |        |                   |
| 2900WD      | MOTOR UNIT-LMU12   |             |            |             |                 |        |                             |        |                |        |                  |        |                       |        |                   |
| 3214WD      | PAGE TYPING UNIT-LP14  |             |            |             |                 |        |                             |        |                |        |                  |        |                       |        |                   |
| 3300WD      | TRANS. DIST.-LXD3  |             |            |             |                 |        |                             |        |                |        |                  |        |                       |        |                   |
| 2.          | LEGEND:<br><ul style="list-style-type: none"> <li>○ A SEL. MAG. TERM. BLOCK (IN LESU)</li> <li>○ B LINE TEST KEY TERM. BLOCK (IN LESU)</li> <li>○ C CABINET TERMINAL BLOCK</li> <li>○ D MOTOR CONTROL TERM. BLOCK (LESU)</li> <li>○ E POWER TERM. BLOCK (IN LESU)</li> <li>◀ F KEYBOARD CONNECTOR</li> <li>● H LINE SHUNT RELAY (IN LESU)</li> <li>○ X SELECTOR MAGNET DRIVER</li> <br/> <li>○ K LINE TEST KEY TERM. STRIP (IN LESU)</li> <li>● K LINE TEST KEY CONTACTS (IN LESU)</li> <li>● L RECTIFIER (IN LESU)</li> <li>● P CONVEN. RECEPT. &amp; FUSE (IN LESU)</li> <li>● Q POWER SWITCH (IN LESU)</li> <li>◀ R TYPING UNIT CONNECTOR</li> <li>○ S SLOW REL. RLY. TERM. BLOCK (IN LESU)</li> <li>○ T TEST SWITCH TERM. BLOCK (IN LESU)</li> <li>◀ U TRANS. DIST. CONNECTOR</li> <li>● AB LOCK BAR SWITCH (IN LAK)</li> <li>● AC AUXILIARY SWITCH (IN LAK)</li> <li>● AF SELECTOR SWITCH (IN LAK)</li> <li>● AH KEYBOARD TERM. BLOCK (IN LAK)</li> <li>● AJ E.O.L. INDICATOR SWITCH (IN LAK)</li> <li>● AL MARGIN INDICATOR SWITCH (IN LAK)</li> <li>● AP SYNC. PULSE MAGNET (IN LAK)</li> <li>● AQ CODE BAR CONTACT (IN LAK)</li> </ul> <p>  INDICATES MOTOR UNIT. REFER TO 2900WD.<br/>  INDICATES N.O. CONTACT<br/>  INDICATES N.C. CONTACT<br/>  INDICATES FILTERING, SHIELDING AND SUPPRESSION NETWORKS </p>  |             |            |             |                 |        |                             |        |                |        |                  |        |                       |        |                   |
| 3.          | ALL APPARATUS SHOWN IN UNOPERATED OR DE-ENERGIZED POSITIONS (TAPE IN UNIT)   |             |            |             |                 |        |                             |        |                |        |                  |        |                       |        |                   |
| 4.          | A. RESISTANCE IN OHMS (Ω)<br>B. INDUCTANCE IN MICROHENRIES (μH)<br>C. CAPACITANCE IN MICROFARADS (μF)  |             |            |             |                 |        |                             |        |                |        |                  |        |                       |        |                   |
| 5.          | CIRCUITS SHOWN FOR .060 AMP. NEUTRAL SIGNAL LINE. FOR .020 AMP. LINE CURRENT OMIT CONNECTION K1-K2<br>REFER TO 4445WD FOR SELECTOR MAGNET DRIVER WIRING.   |             |            |             |                 |        |                             |        |                |        |                  |        |                       |        |                   |
| 6.          | RECTIFIER SHOWN CONTROLLED BY POWER SWITCH. FOR CONTINUOUS OPERATION, MOVE L-10 FROM E-2 TO E-1.   |             |            |             |                 |        |                             |        |                |        |                  |        |                       |        |                   |
| 7.          | LINE SHUNT RELAY SHOWN CONTROLLED BY POWER SWITCH AND SHUNTING TRANSMITTER DISTRIBUTOR AND KEYBOARD SIGNAL GENERATORS AND SELECTOR MAGNET DRIVER.  |             |            |             |                 |        |                             |        |                |        |                  |        |                       |        |                   |
| 8.          | SYNC. PULSE CURRENT SHOWN SUPPLIED FROM SET RECTIFIER. TO PULSE SET EXTERNALLY, REMOVE STRAPS AS FOLLOWS AND CONNECT EXTERNAL SOURCE IN ACCORDANCE WITH INSTALLATION REQUIREMENTS:<br><table border="1"> <tbody> <tr> <td>C142 - C125</td> <td>C21 - C131</td> </tr> <tr> <td>C131 - C124</td> <td>C22 - C142</td> </tr> </tbody> </table>   | C142 - C125 | C21 - C131 | C131 - C124 | C22 - C142      |        |                             |        |                |        |                  |        |                       |        |                   |
| C142 - C125 | C21 - C131   |             |            |             |                 |        |                             |        |                |        |                  |        |                       |        |                   |
| C131 - C124 | C22 - C142   |             |            |             |                 |        |                             |        |                |        |                  |        |                       |        |                   |

| NO. | NOTES (CONT.)  |
|-----|--|
| 9.  | USE POWER AND SIGNAL LINE SUPPRESSORS AND SYNCHRONOUS OR GOVERNED FILTERED MOTOR UNIT FOR INSTALLATION REQUIRING MINIMUM R.F. INTERFERENCE. FOR OTHER INSTALLATIONS, OMIT SUPPRESSORS AND CONNECT INPUTS AND GOVERNED MOTOR DIRECTLY TO TERMINALS SHOWN. |
| 10. | (X) INDICATES SPARE LEADS WHICH ARE TAPED AND TIED BACK TO CABLE.  |
| 11. | FOR SCHEMATIC OF AUXILIARY REPERFORATOR AND ASSOCIATED APPARATUS, SEE 3343WD.  |

