

REVISIONS
 1-17-41 J.L.F.
 2-1-41 J.L.F.
 3-1-41 J.L.F.
 4-1-41 J.L.F.
 5-1-41 J.L.F.
 6-1-41 J.L.F.
 7-1-41 J.L.F.
 8-1-41 J.L.F.
 9-1-41 J.L.F.
 10-1-41 J.L.F.
 11-1-41 J.L.F.
 12-1-41 J.L.F.
 13-1-41 J.L.F.
 14-1-41 J.L.F.
 15-1-41 J.L.F.

NOTES

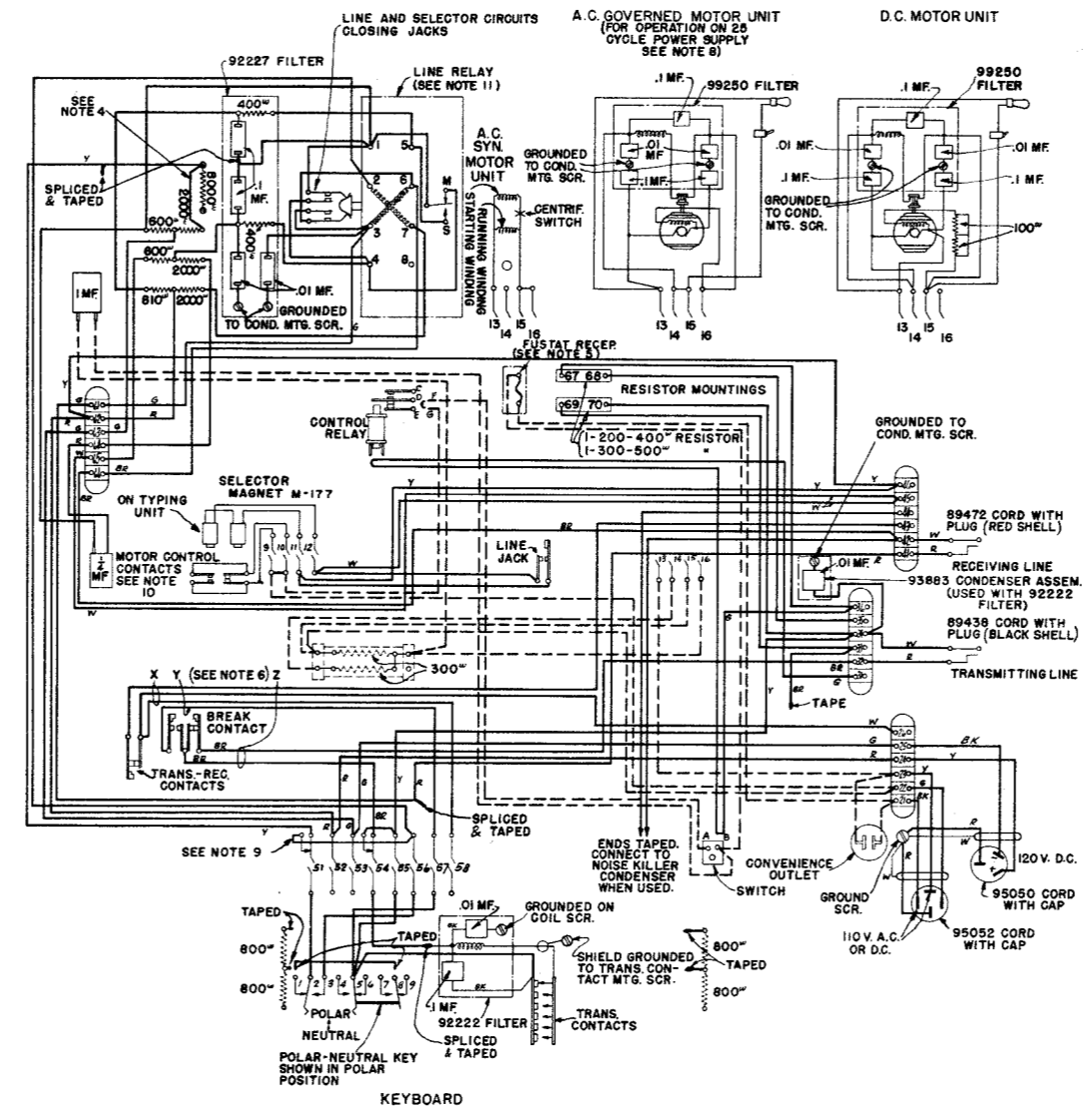
- BASE WIRING SHOWN WITHOUT CONTROL RELAY. WHEN CONTROL RELAY IS USED, WIRES SHOWN CONNECTED TO "A" AND "B" ON SWITCH ARE REMOVED, SPLICED TOGETHER AND TAPED. WIRE LOOPS AT SWITCH AND CONTROL RELAY COIL ARE CUT AND CONNECTED TO RESPECTIVE UNITS. WIRE LOOP AT CONTROL RELAY CONTACTS IS CUT, "e" IS CONNECTED TO "E" FOR "BREAK OPER." AND TO "c" FOR "MAKE OPER." "f" IS CONNECTED TO "d" IN EITHER CASE.
- FOR "BREAK OPER." INVERT POWER SWITCH TO MAKE "ON" AND "OFF" DESIGNATIONS ON COVER AGREE WITH OPERATION OF SWITCH.
- TO OPERATE PRINTER WITHOUT LINE RELAY MOVE YELLOW WIRE FROM TERMINAL 62 TO 61; MOVE WHITE WIRE FROM TERMINAL 65 TO 66; REMOVE AND TAPE GREEN WIRE GOING TO LINE RELAY FROM TERMINAL 61.
- FOR .020 AMP. SIGNAL LINE OPERATION, CONNECT THIS LEAD TO OTHER TERMINAL OF RESISTOR.
- RECOMMENDED FUSETRON OR FUSTAT (AND ALTERNATE FUSE) PROTECTION

MOTOR	FUSETRON OR FUSTAT	FUSE
110 V. AC-60 CYCLE SYN.	* 3.2 AMP.	6 AMP.
110 V. AC-60 CYCLE GOV.	1.60 AMP.	3 AMP.
110 V. DC GOV.	.8 AMP.	3 AMP.
110 V. AC-25 CYCLE GOV.	1.4 AMP.	3 AMP.

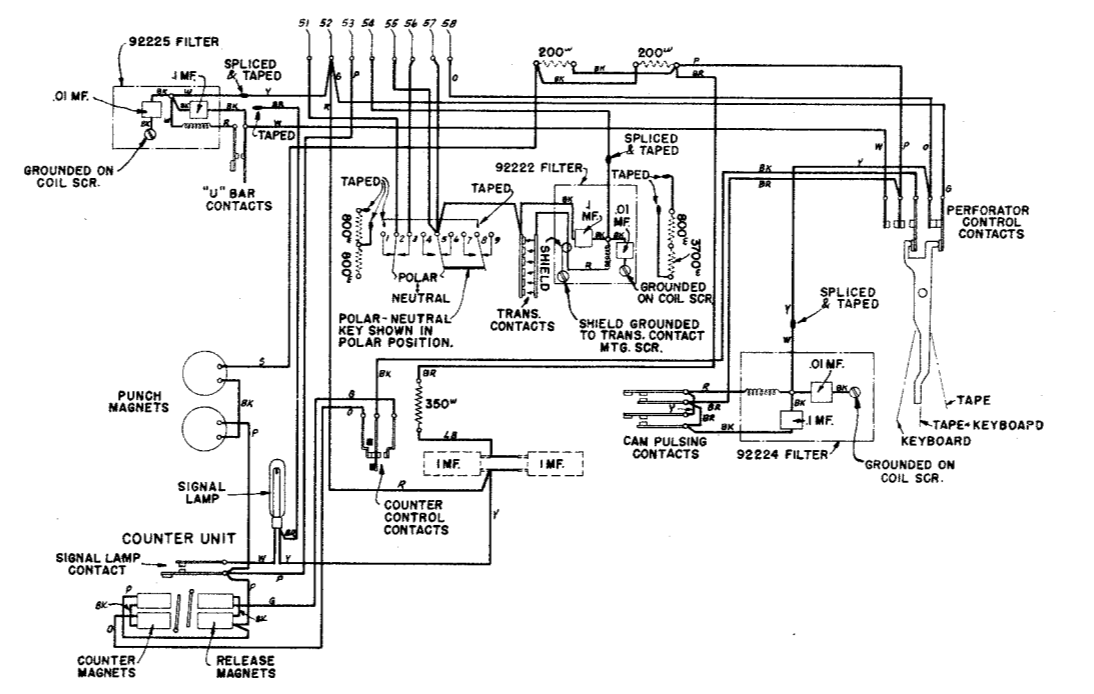
 * A 3.2 AMP FUSETRON IS FURNISHED WITH NEW 15 PTR. BASES
- TO DISABLE SEND-RECEIVE BREAK MECHANISM:
 - SPLICE AND TAPE WIRES MARKED "X".
 - TAPE WIRE MARKED "Y".
 - SPLICE AND TAPE WIRES MARKED "Z".
- EQUIPMENT SHOWN DOTTED IS UNDERNEATH UNITS.
- WHEN A.C. SERIES MOTOR IS TO BE DRIVEN FROM 25 CYCLE POWER SUPPLY, A 25 OHM RESISTOR SHOULD BE CONNECTED IN THE POWER LEADS.
- WHEN POLAR SIGNALS ARE USED, REMOVE JUMPER BETWEEN BACK CONTACT NO. 51 AND SLIP CONNECTION CONTACT NO. 56 ON BASE.
- CONTACTS SHOWN BETWEEN TERMINALS 9 AND 10 ARE PRESENT ON TYPING UNIT ONLY WHEN MOTOR CONTROL ON FIGURE "H", OR FIGURE "M" IS USED. WHEN MOTOR CONTROL IS USED REMOVE STRAP BETWEEN 9 AND 10.
- RY-28 RELAY (W.E. 215-H) - 85 OHMS PER WINDING. (FOR .060 AMPERE SIGNALING ONLY)
 RY-30 RELAY (W.E. 255-A) - 136 OHMS PER WINDING. (FOR .060 OR .020 AMPERE SIGNALING)
- COLOR CODE:

W - WHITE	Y - YELLOW	S - SLATE	BK - BLACK
R - RED	O - ORANGE	BR - BROWN	
G - GREEN	P - PURPLE	LB - LIGHT BLUE	
- ASSOCIATED CABLES:

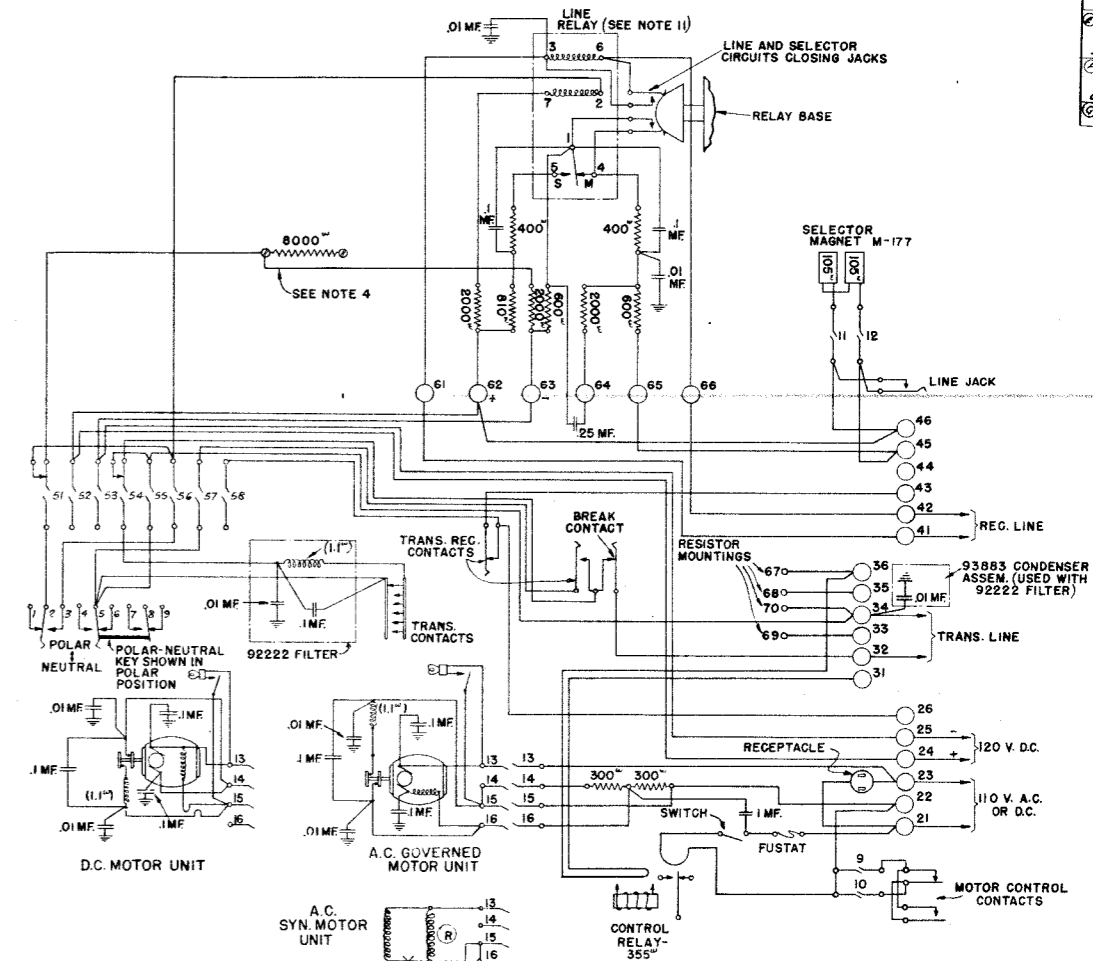
CABLE NO.	DESCRIPTION
74574	BASE (LINE)
74573	BASE (POWER)
74575	LINE RELAY UNIT
74571	D.C. MOTOR UNIT
74768	A.C. MOTOR UNIT
74572	KEYBOARD & PERF. TRANS.
74625	SELECTOR MAGNET
74789	MOTOR CONTROL CONTACTS
92814	BASE
99881	PERFORATOR & COUNTER (PERF. TRANS.)
83895	RESISTOR (PERF. TRANS.)
- ALL WIRES ARE NO. 18 DELTABESTON COTTON COVERED FIXTURE WIRE, EXCEPT MOTOR LEADS.
- THIN LINES INDICATE WIRES NOT IN CABLE.



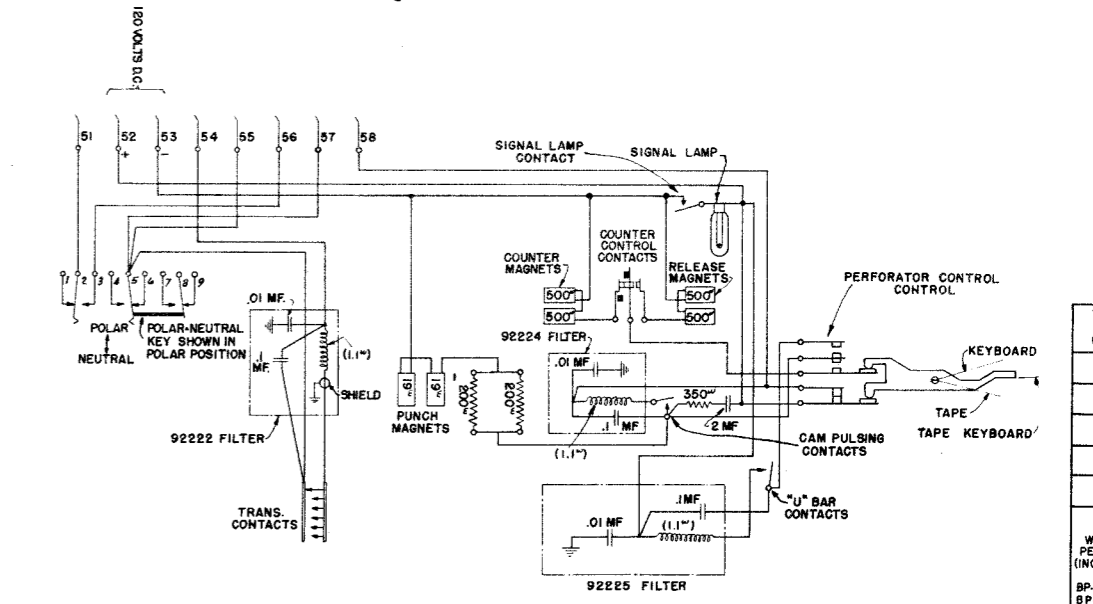
ACTUAL WIRING 15 PRINTER SET WITH KEYBOARD



ACTUAL WIRING - 15 TYPE PERFORATOR TRANSMITTER
 (CHARACTER COUNTER UNIT MOUNTED ON PUNCH ASSEMBLY TO THE LEFT OF KEYBOARD)



SCHEMATIC WIRING - 15 PRINTER SET WITH KEYBOARD



SCHEMATIC WIRING - 15 TYPE PERFORATOR TRANSMITTER

TELETYPE CORPORATION
 WD-1986-G
 WIRING DIAGRAM
 MODEL 15 PRINTER
 WITH KEYBOARD AND
 PERFORATOR TRANSMITTER
 (INCLUDING RADIO FILTERS)
 BP-13, BP-22, BP-23, BP-93,
 BP-107
 BB-37
 BK-12
 PEX-20
 DRAWN H.C.A. & J.S.M.
 TRACED
 CHECKED J.H.S.
 ENG'G D. S.M.
 APPROVED M.T.S. & M.S.