

THE WESTERN UNION TELEGRAPH COMPANY  
INFORMATION SYSTEMS & SERVICES DEPT.

110  
SPECIFICATIONS  
15302-A

APPENDIX NO. 1  
April 21, 1967

DATA EQUIPMENT  
MODEL 15 TELEPRINTER AND MODEL 19 ASR SET  
EQUIPPED WITH AN LABD 500 ANSWER-BACK UNIT

ASSEMBLY AND WIRING

This appendix was written to amend paragraph 6 under installation and assembly, to add newly assigned IDP numbers to the bill of material, to change Wiring Diagram 526812, and change the notes on Drawing 528003.

UNDER DRAWINGS INCLUDED:

OMIT: Drawings

526812-A-2 Wiring Diagram  
528002-A-2 1/2 Bill of Material  
528003-A-7 Mounting Shelf

ADD: Drawings

526812-B-2 Wiring Diagram  
528002-B-2 1/2 Bill of Material  
528003-B-7 Mounting Shelf

UNDER: INSTALLATION AND ASSEMBLY

OMIT: Paragraph 6

ADD: Paragraph 6A on page 3 to read as follows:

The LABD 500 and the non-contention relay can be fastened to the rear shelf of 19 Set table 7904 as shown on Drawing 527553. This same method can be used to fasten the LABD 500 to Mounting Shelf 528003. In a 5A or 7300 or 7301A Type Console, Mounting Shelf 528003 should be located on the inner rear wall under the, "SLIDE SHELF FOR PRINTER."

No. 2  
15302-A  
App. #1

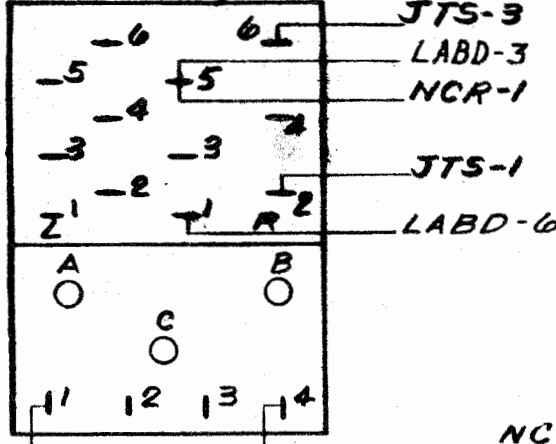
The two mounting holes for the shelf should be located 10 inches from the bottom of the, "SLIDE SHELF FOR PRINTER" with approximately 3 inches on each side of the mounting shelf to the side walls of the console. The shelf is mounted to the console with two #8 screws, washers and nuts, (Items S, T, & Q), Drawing 528002. Use the shelf to spot the location of the holes to be drilled in the console. The non-contention relay bracket should be used as a locating template. Mount the lamp resistor next to the relay bracket as shown on Drawing 527553.

---ooOoo---

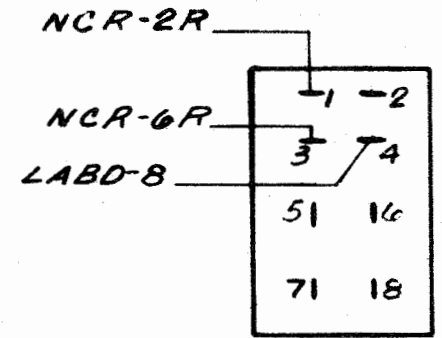
The changed portions of these specifications shall be marked "See Appendix No. 1."

**REVISIONS**  
 B-10 MAR 67  
 REVISED PER DCN  
 1280.  
 JD HT

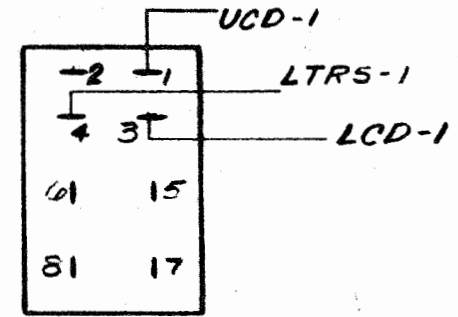
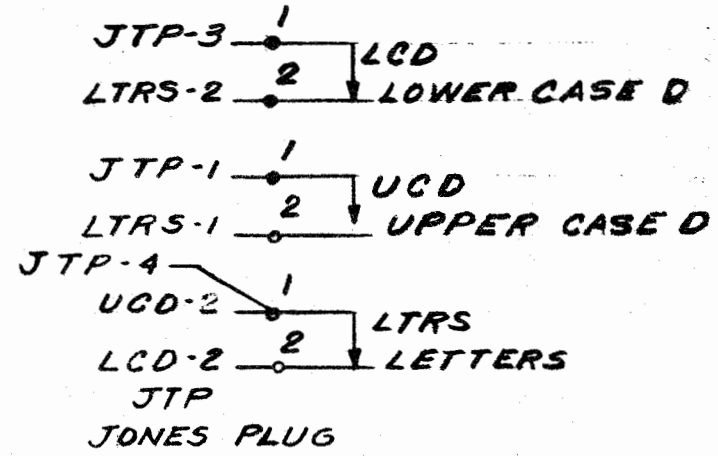
**NCR NON-CONTENTION RELAY**



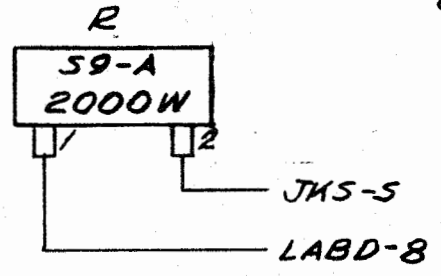
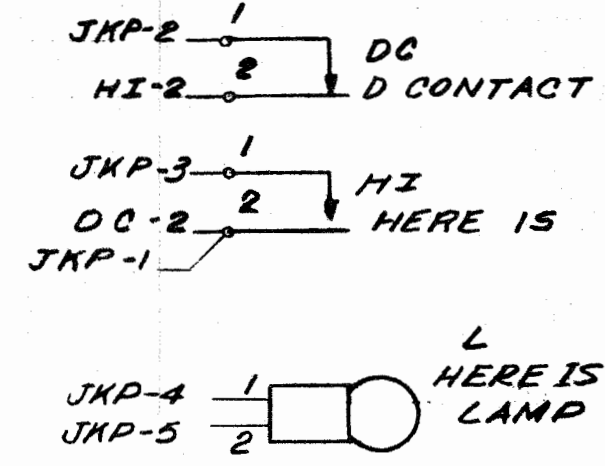
**JTS JONES SOCKET**



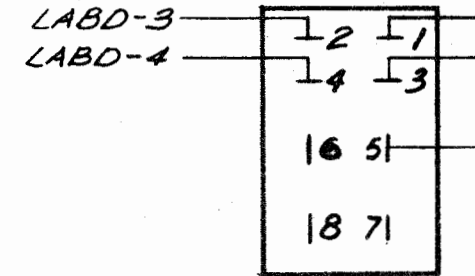
**TYPING UNIT CONTACTS**



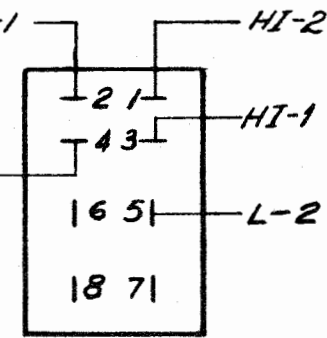
**KEYBOARD CONTACTS**



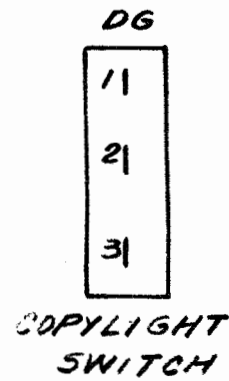
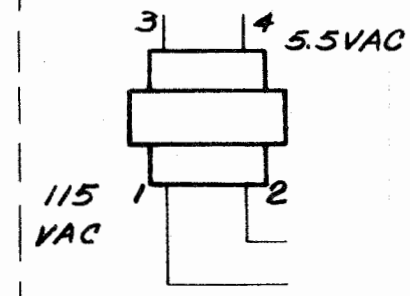
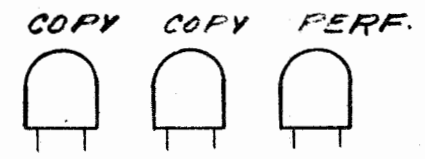
**JKS JONES SOCKET**



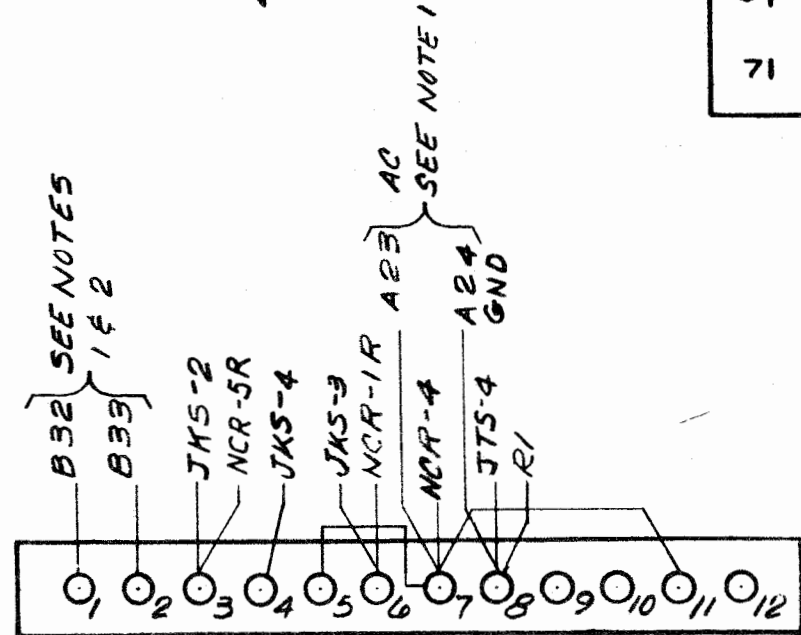
**JKP JONES PLUG**



**DE 6V LAMPS**



DF TRANSFORMER  
 CONSOLE



SEE NOTE 1

**NOTES:**

1. A 23 & A 24, B 32 & B 33 ARE SHOWN ON DWG. # 312150.
2. REMOVE WIRE FROM B 44 (DWG. # 312150) COMING FROM C 6. CONNECT THIS WIRE TO B 32. PLACE STRAP FROM B 32 TO B 34.
3. FOR SCHEMATIC WIRING SEE DWG 526813

OBLIVIE PRESS, INC. REPROVAL NO. 4404

DRAWING NUMBER  
 526812-2  
 SHEET

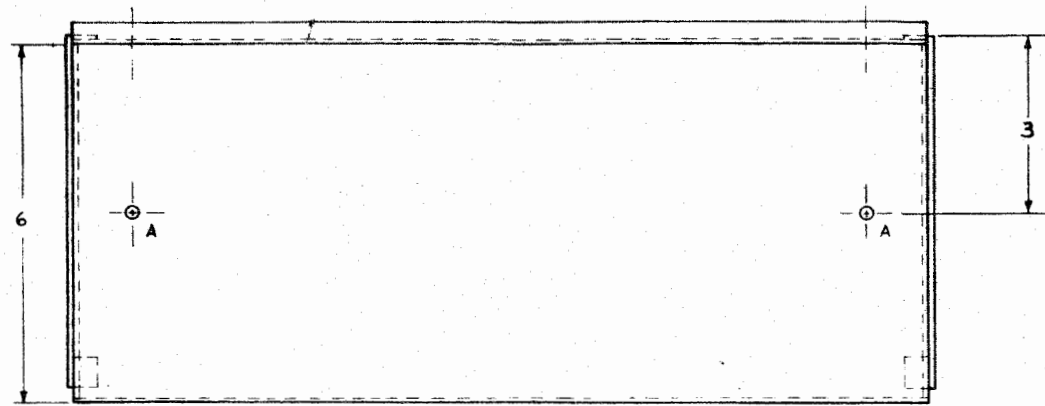
				MODEL 19 SET WITH LABD WIRING DIAGRAM	
DRAWN	DSGN. ENGR.	SPEC. ENGR.	APPD	ISSUE	DATE
DATE	DATE	DATE	DATE	A 20	OCT 66
				DRAWING NUMBER	SIZE
				526812	2
				SHEET	

ITEM No.	QUAN. REQ'D.	I. D. P. No.	ITEM MODEL 15 and 19 SETS WITH LABD	DESCRIPTON	SPECS. OR DWG.
1	4	01335448	41733 Insulator		Dwg. 46432
2	2	01347054	74727 Terminal		Dwg. 46483
3	1	01335430	41732 Plate		Dwg. 46433
4	1	01462770	12374 Contact Spring		Dwg. 59164
5	1	01462754	12372 Contact Spring		Dwg. 59342
6	1	01337519	70529 Stiffener		Dwg. 46429
7	2	01800758	526817 Bushing		Dwg. 526817
8	2	01268292	Socket S3081-CCT-K	H.B. Jones	
9	2	01219535	Plug P308-CCT-L	H.B. Jones	
10	2	01775007	Plug 502332 - 501 Banana		Dwg. 502332
11	1	01775049	Socket 502332 - 101 Relay 16 Terminal		Dwg. 502332
12	1	01775056	Cover 502332 - 301 Relay 16 Terminal		Dwg. 502332
13	1	01800858	Twin Contact Switching Relay		Dwg. 526941
14	1	01800724	526814 Contact Arm		Dwg. 526814
15	1	01800782	526815 Clamp		Dwg. 526815
16	1	01800732	526816 Bracket		Dwg. 526816
17	1	01697912	Lamp 330 Incandescent	Chicago Miniature	Lamp Works
18	1	01242065	Resistor 500046-A2000 Fixed Wirewound		Dwg. 500046
19	1	01800990	185-A015-1871 Switch Assembly	Dialco	
			Engraved with (Here Is)		
20	1	01389049	116965 Lever, Function		Dwg. 109029
21	3	01399238	135783 Contact Assembly		
22	1	01506774	207643 Plate, Mounting		Dwg. 105408
23	2	01509018	207990 Lever, Function		Dwg. 109030
24	1	01800740	526818 Contact Bracket		Dwg. 526818
25	1	01109272	Unit LABD 500 ANS-BACK (50 Baud)	Teletype	
			OR		
	1	01800574	Unit LABD 500 ANS-BACK (45.5 Baud)	Teletype	
26	1	01800982	528003 Mounting Shelf		Dwg. 528003
			FASTENINGS		
A	2	01603084	Screw 4-40x1/2 Round Hd.		
B	2	01750364	Screw 6-40x3/8 Round Hd.		
C	2	01307348	Washer #6 Flat		
D	1	01427625	Screw 4-40x3/16 Round Hd.		
E	1	01307264	Washer #4 Flat		
F	4	01260596	Screw 6-32x3/8 Round Hd.		
G	4	01602714	Washer #6 Lock		
H	1	01602797	Screw 8-32 UNC-2Ax4-1/2 Round Hd. Steel		
J	1	01726380	Washer #8 Insulated		
K	3	01800840	Nut, Wing 1/4-20 UNC-2B, Steel Cad. Plated		
L	9	01801040	Standard Wrought Washer 3/4 O.D.	Keystone Bolt and Nut Corp.	
			5/16 I.D., 16 Ga.		
M	3	01801058	Standard Wrought Washer 1-3/8 O.D.	Keystone Bolt and Nut Corp.	
			9/16 I.D., 12 Ga.		
N	3	01800974	Screw, Machine, 1/4-20x1-1/2 Pan Head, Steel Cad. Plated		
O	3	01204347	Nut, Hex. 1/4-20 UNC-2B, Steel Cad. Plated		
P	3	01612515	Washer, Lock, 1/4 ASA, Internal Tooth Steel, Parkerized		
Q	1	01204313	Nut 8-32, Hex. Steel		
R	4	01602680	Nut 6-32, Hex. Steel		
S	2	01260794	Screw 8-32x5/8 Round Hd.		
T	2	01307298	Washer, #8 Flat		

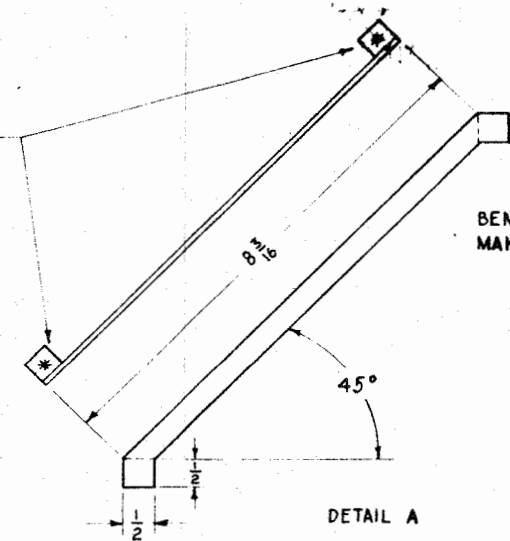
B-Apr. 12, 1967  
 IDP numbers  
 added and  
 retyped.  
 HT JHC

<b>WESTERN UNION</b>			
MODELS 15 & 19 SETS WITH LABD			
<b>BILL OF MATERIAL</b>			
SHEET 1 OF 1			
DRAWN	DESIGN	BY ENG.	APP'D.
			ISSUE DATE DRAWING NUMBER
			A 1-11-67 528002 -2 1/2

REVISED  
 8-10 MAR 67  
 REVISED PER DCN  
 1280.  
 J.D. HT

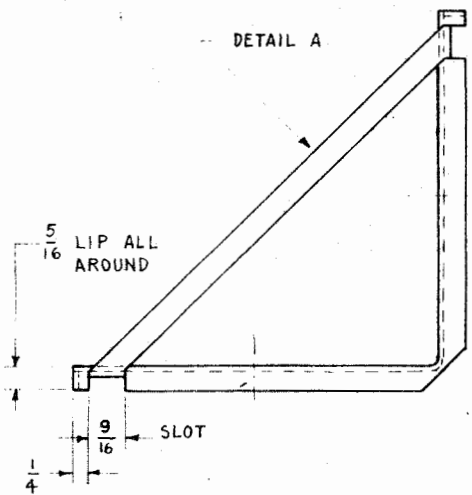
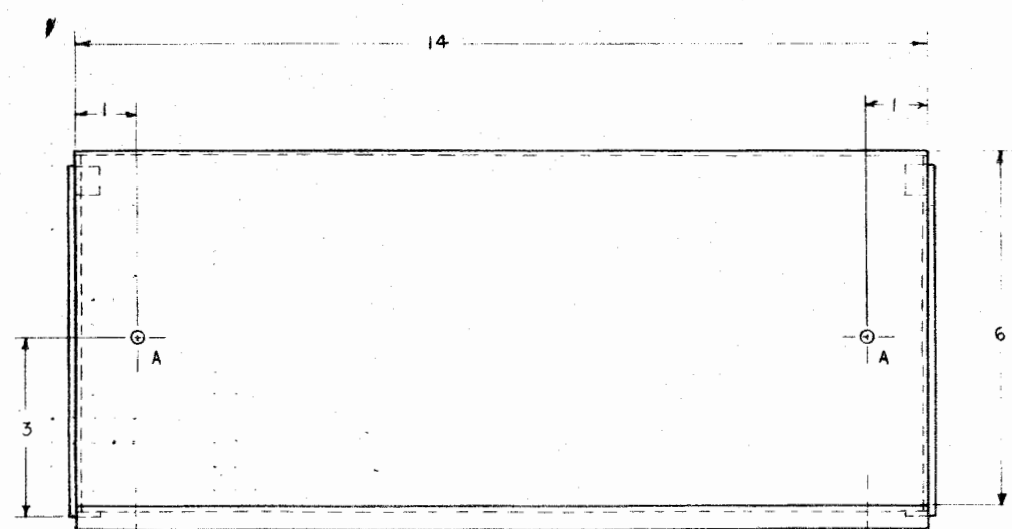


\* SPOT WELD TO BRACKET



BEND ON DOTTED LINES  
 MAKE 2

DIE CUT



DRILLING:  
 A - .180 DR (4)

34992  
 36204  
 56193

DRAWING NUMBER  
 528003-1  
 SHEET

MATERIAL: CRS (SAE 1010 1020) .070 ± .005 THICK		TOLERANCES UNLESS OTHERWISE SPECIFIED		western union		SHELF, LABD MOUNTING MODELS 15 & 19 WITH LABD	
		DECIMAL	FRACTIONAL	DRAWN	DSGN.	ENGR.	SPEC. ENGR.
			± 1/2	DATE	DATE	DATE	DATE
		ANGULAR	BET. HOLES	HT	HT	HT	HT
				DATE	DATE	DATE	DATE
NEXT ASS'Y APPLICATION		FINISH: DWG. 210991		SCALE 1" = 1"		ISSUE DATE	DRAWING NUMBER
						A 9 JAN 67	528003
							7
							SHEET

DATA EQUIPMENT

MODEL 15 TELEPRINTER AND MODEL 19 ASR SET  
EQUIPPED WITH AN LABD 500 ANSWER-BACK UNIT

ASSEMBLY AND WIRING

These specifications cover the installation and wiring of a self-contained LABD 500 as used in the 5A, 7300, 9233 type consoles and 11481 operating table.

TELETYPE BULLETINS REFERRED TO:

- 138B Adjustments - Type Bar Page Printer - Models 15 and 20
- 272B Technical Manual - Models 28 and 35 Answer-Back Units
- 1037B Parts - Type Bar Page Printer - Model 15
- 574-235-800TC - Parts - Self-contained Answer-Back (LABD) Bulletin 1199

WESTERN UNION SPECIFICATIONS REFERRED TO:

- 9994 Wiring Cabinet 6752-B and 6752.1-A and Equipment Panels 7286-A and 7286.1A Installation and Operation
- 11761 Teleprinter Console 9233-A Assembly and Wiring
- 14535 Remote Control Unit 11272-A, 11272-B and 11272.2A - Theory of Operation
- 14576 Conversion of Operating Table 7904-A to Telex Operating Table 11481-A or 11481.1A

ENGINEERING BULLETINS REFERRED TO:

- 5315 Model 28 ASR Set - Description

ENGINEERING CATALOGS REFERRED TO:

- 50-B Teleprinter Type 15 - Catalog of Parts

15302-A

DRAWINGS INCLUDED:

154529-D-7	Wiring Cabinet 6752-A - Wiring
154627-F-2	Equipment Panel 7286-B - Wiring
177480-D-3	Consoles 9233-A and 5A - Connections between RCU and Wiring Cabinet
312150-D-32	Telex Table 11481 - Schematic
526812-A-2	Model 19 Set with LABD - Wiring Diagram
526813-A-2	Model 19 Set with LABD - Schematic
526814-A-1	Models 15 and 19 Sets with LABD - Contact Operating Arm
526815-A-1	Models 15 and 19 Sets with LABD - Contact Operating Arm Clamp
526816-A-1	Models 15 and 19 Sets with LABD - Relay Mounting Bracket
526817-A-1	Models 15 and 19 Sets with LABD - Contact Bushing
526818-A-1	Models 15 and 19 Sets with LABD - Contact Bracket
527553-A-2	Models 15 and 19 Sets with LABD - Installation of LABD
527554-A-2	Models 15 and 19 Sets with LABD - Installation of Contacts
527555-A-1	Models 15 and 19 Sets with LABD - Wiring
527595-A-1	Models 15 and 19 Sets with LABD - Main Door Modification
528003-A-7	Models 15 and 19 Sets with LABD - Mounting Bracket
528002-A-2 1/2	Bill of Material

GENERAL

- 1 The LABD 500 is a self-contained answer-back unit that can be operated at speeds of 60, 66, 75 or 100 words per minute. The 21 character code drum can be used for one, two or three cycle operation, but the first character must always be a blank; this prevents the contacts from touching the buss bar in the home position, however transmission of the blank is suppressed. The distributor is a 7.5 unit printed circuit face plate. The schematic wiring is shown on Drawing 526813 and the actual wiring is shown on Drawing 526812.
- 2 These specifications provide information which will allow the answer-back unit to be tripped by upper case "D", as in Telex or upper case "F".

- 3 The answer-back is prevented from operating during keyboard transmission by the non-contention relay. This relay is energized by either upper case "D" or "F". The clutch trip magnet circuit of the LABD goes through a set of contacts operated by the relay. When the relay is energized this circuit is open. The circuit is restored upon receipt of a "Letters", or lower case "D" or "F" character as shown on Drawing 526813.

#### INSTALLATION AND ASSEMBLY

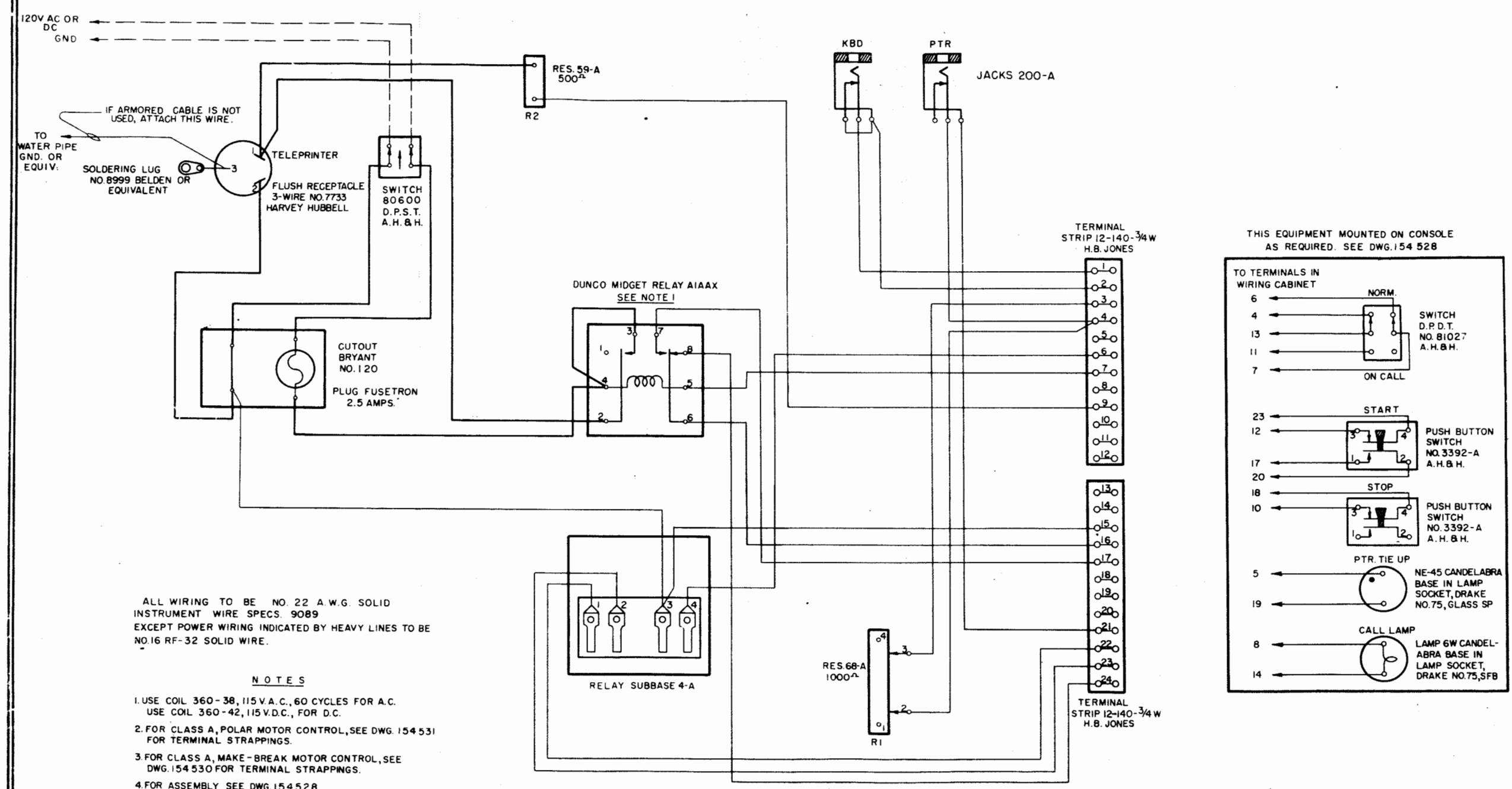
- 4 Installation of the upper case "D" or "F" contacts and the "Here Is" contact are shown on Drawing 527554. The contact operating assembly, part numbers 526814 and 526815, is clamped to either the "F" or "D" keylever, depending on the type of service. This contact and the "Here Is" contact (with lamp) are assembled on Bracket 526818. The complete assembly is then fastened to the keyboard using two #6-40 screws. The keylever contact should be adjusted to make when the keyboard transmitting shaft is released. The main door must be modified according to Drawing 527595.
- 5 Using Bracket 207643, install a Contact Assembly 135733 in positions A, B and D as shown on Drawing 206546 in Engineering Catalog 50B. Facing the front of the typing unit and counting the slots in the function box from left to right: In slot one install a 116965 Function Lever coded for "Letters"; in slot 5 a 207990 Function Lever coded for upper case "D" or "F", and in slot 9 a 207990 Function Lever coded for lower case "D" or "F". Use Coding Chart shown on Drawing 153631 in Engineering Catalog 50B.
- 6 The LABD 500 and the non-contention relay can be fastened to the floor of a console as shown on Drawing 527553. This same method can be used to fasten the LABD 500 to Mounting Bracket 528003. This bracket can then be mounted on a sidewall using two #8 screws, washers, and nuts, (Items S, T, Q), Drawing 528002. Use the bracket to spot the location of the holes to be drilled in the sidewall. The non-contention relay bracket can also be used as a locating template. Mount the lamp resistance next to the relay bracket as shown on Drawing 527553.



WIRING

- 7 Drawings 526812 and 526813 are the actual and schematic wiring diagrams of the LABD 500 and associated circuitry.
- 8 Drawing 527555 shows the necessary wiring changes when using a wiring cabinet in a Teleprinter Console 7300A and 5A, and Drawing 177480 is provided as further reference.
- 9 Drawing 154529 is a wiring diagram of Wiring Cabinet 6752-B which is used in Teleprinter Console 5A.
- 10 Drawing 154627 shows the wiring of Equipment Panel 7286-B used with a 7300 Type Console.
- 11 Drawing 312150 is a schematic of Operating Table 11481-A and 11481.1A as used in Telex.

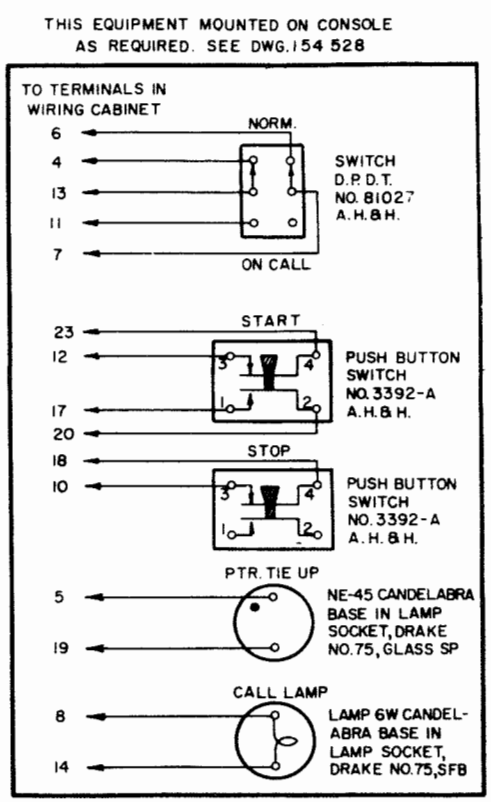
---ooOoo---



ALL WIRING TO BE NO. 22 A.W.G. SOLID INSTRUMENT WIRE SPECS. 9089 EXCEPT POWER WIRING INDICATED BY HEAVY LINES TO BE NO. 16 RF-32 SOLID WIRE.

**NOTES**

1. USE COIL 360-38, 115 V.A.C., 60 CYCLES FOR A.C. USE COIL 360-42, 115 V.D.C., FOR D.C.
2. FOR CLASS A, POLAR MOTOR CONTROL, SEE DWG. 154 531 FOR TERMINAL STRAPPINGS.
3. FOR CLASS A, MAKE-BREAK MOTOR CONTROL, SEE DWG. 154 530 FOR TERMINAL STRAPPINGS.
4. FOR ASSEMBLY SEE DWG. 154 528



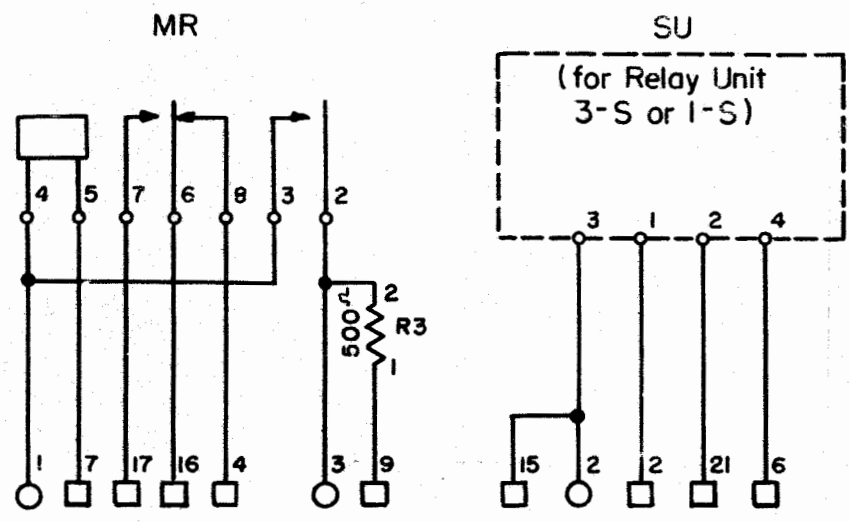
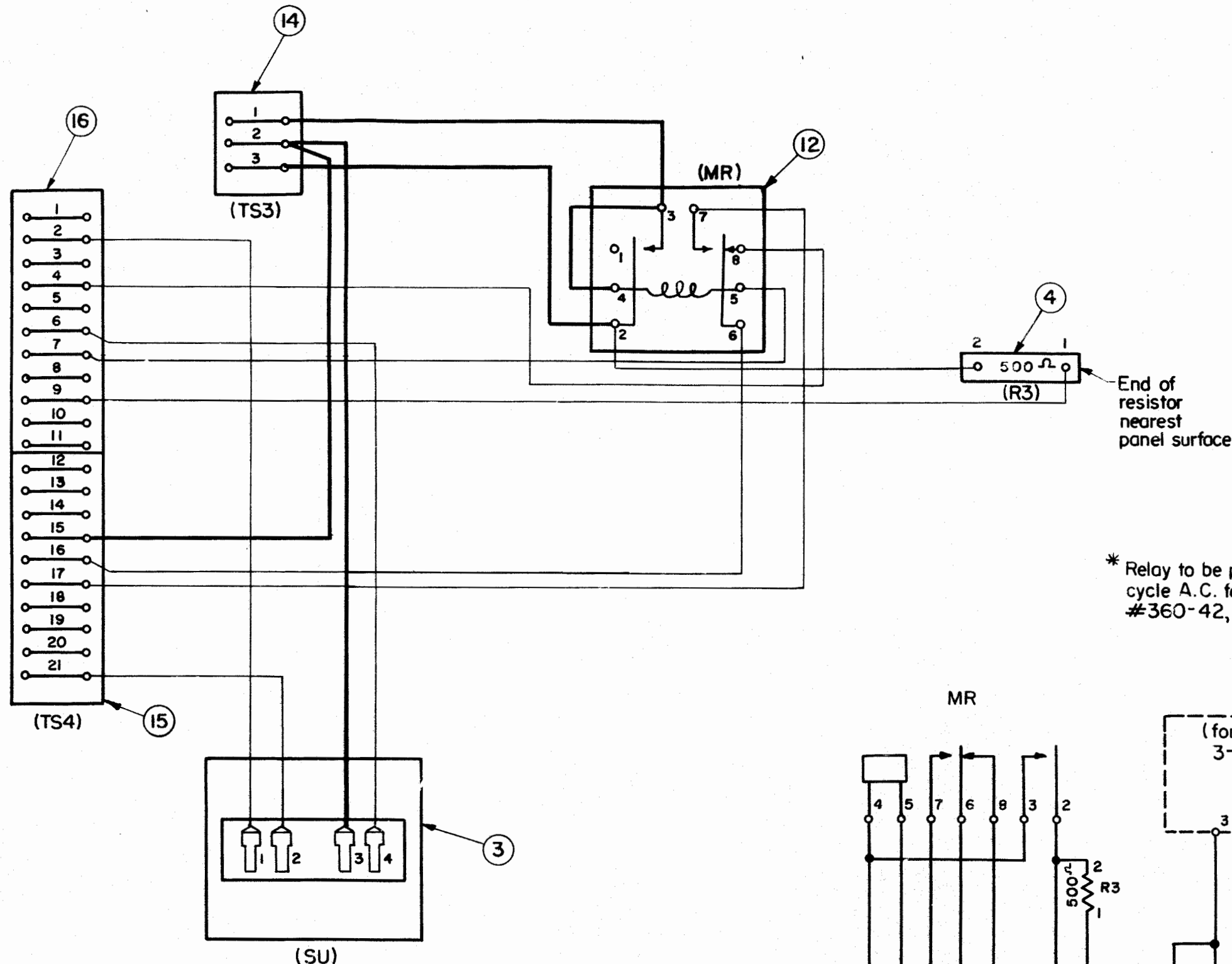
SCALE: 1:1	DATE: 11/15/54	DRW. BY: J.L.C.	CHK. BY: J.L.C.	APP. BY: J.L.C.	DATE: 11/15/54
TELEPRINTERS WIRING CABINET 6752-B WIRING					
W. U. TEL. CO.					
DRAWING NUMBER 154 529 -7					
A-OCTOBER 1953					
APPROVED: J.L.C.					
NOV 17 1953					
ALL WIRE 22 A.W.G. WAS 20					
APPROVED: J.L.C.					
APRIL 7 1954					
SWITCH 80600 WAS CH. 8375					
OCTOBER 15 1954					
TERMINAL STRIPS #12-140-3/4 W WERE #21-140-3/4 W AND #3-140-3/4 W					

CODE

- ③ Relay Sub-Base 4-A
- ④ Resistor 59-A, 500 ohms
- ⑫ Relay #BIAAX, Struthers-Dunn, Inc.\*
- ⑭ Terminal Strip #3-142-3/4 W. H.B. Jones.
- ⑮ Terminal Strip #10-140-3/4 W. H.B. Jones.
- ⑯ Terminal Strip #11-140-3/4 W. H.B. Jones

— #16 A.W.G. NEC Type TF, Solid Wire  
 — #22 A.W.G. Solid Instrument Wire per Specs. 9089

\* Relay to be provided with Coil #360-38, 115V. 60 cycle A.C. for A.C. areas. For D.C. areas, Coil #360-42, 115V. D.C. shall be used.



○ = Terminals of TS3  
 □ = Terminals of TS4

THEORY

F- OCT. 11, 1955  
 Item 12 rotated 180°

*A.V. Smith EMD*

E- JUNE, 29, 1955

Reitemized. Items 15 and 16 were one 21-terminal strip. Code was "A"

*Smith EMD Jones*

D- DEC. 30, 1954

ITEM 11 WAS AIAAX

*Smith EMD Jones*  
 APPROVED

C- NOV. 17, 1953

R3 was 1500 Ω

*EMD Jones*  
 APPROVED

B- NOV. 12, 1953

Redrawn. Supersedes A issue. Theory and code added.

*EMD Jones*  
 APPROVED

A-

DRAWING NUMBER  
 154627 2

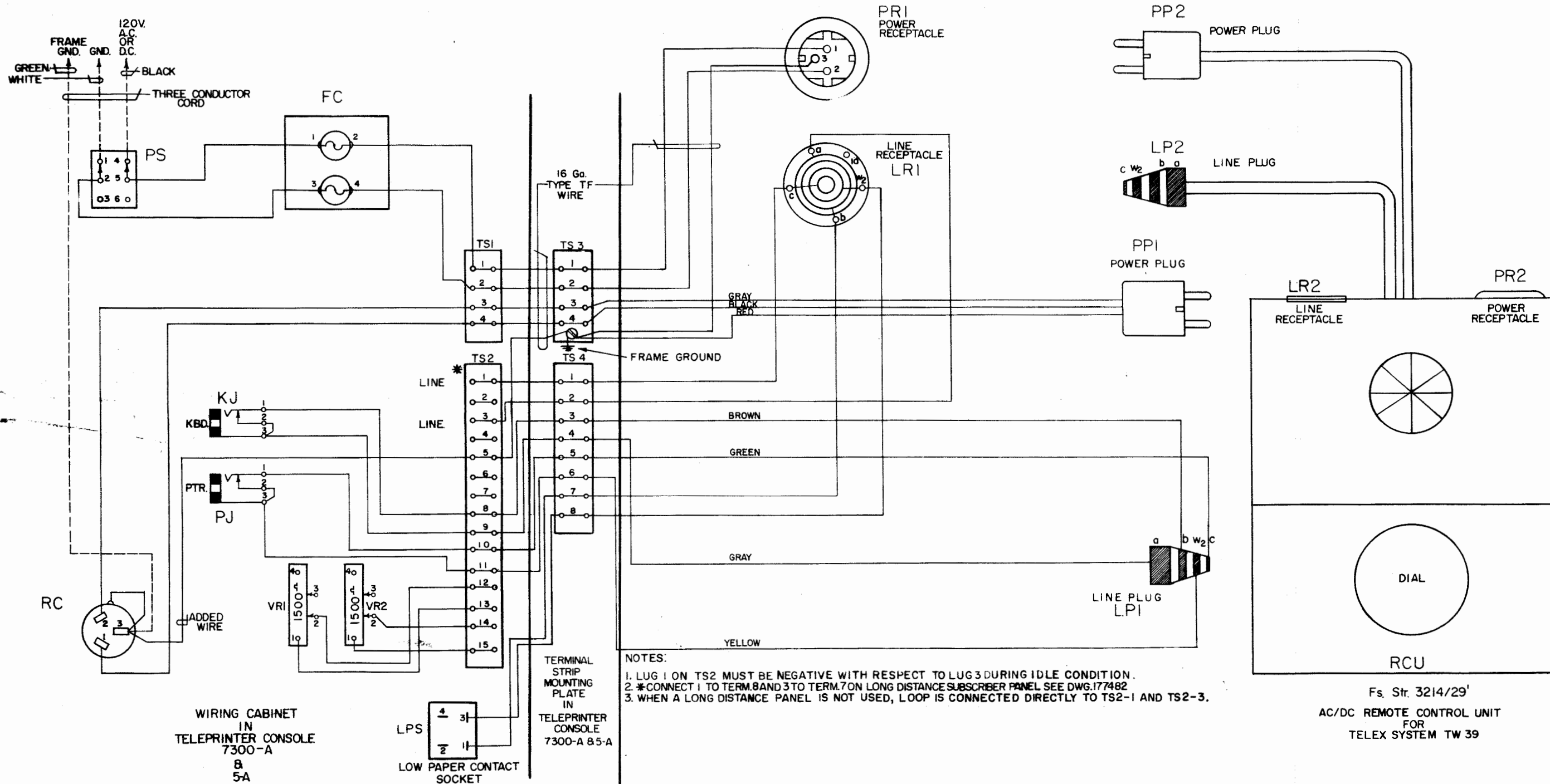
W. U. TEL. CO.

EQUIPMENT  
 PANEL  
 7286-B

WIRING

SCALE:

DRAWN *P.J.G.*  
 TRACED  
 CHECKED *EMD Jones*



WIRING CABINET  
 IN  
 TELEPRINTER CONSOLE  
 7300-A  
 B  
 5-A

Fs. Str. 3214/29'  
 AC/DC REMOTE CONTROL UNIT  
 FOR  
 TELEX SYSTEM TW 39

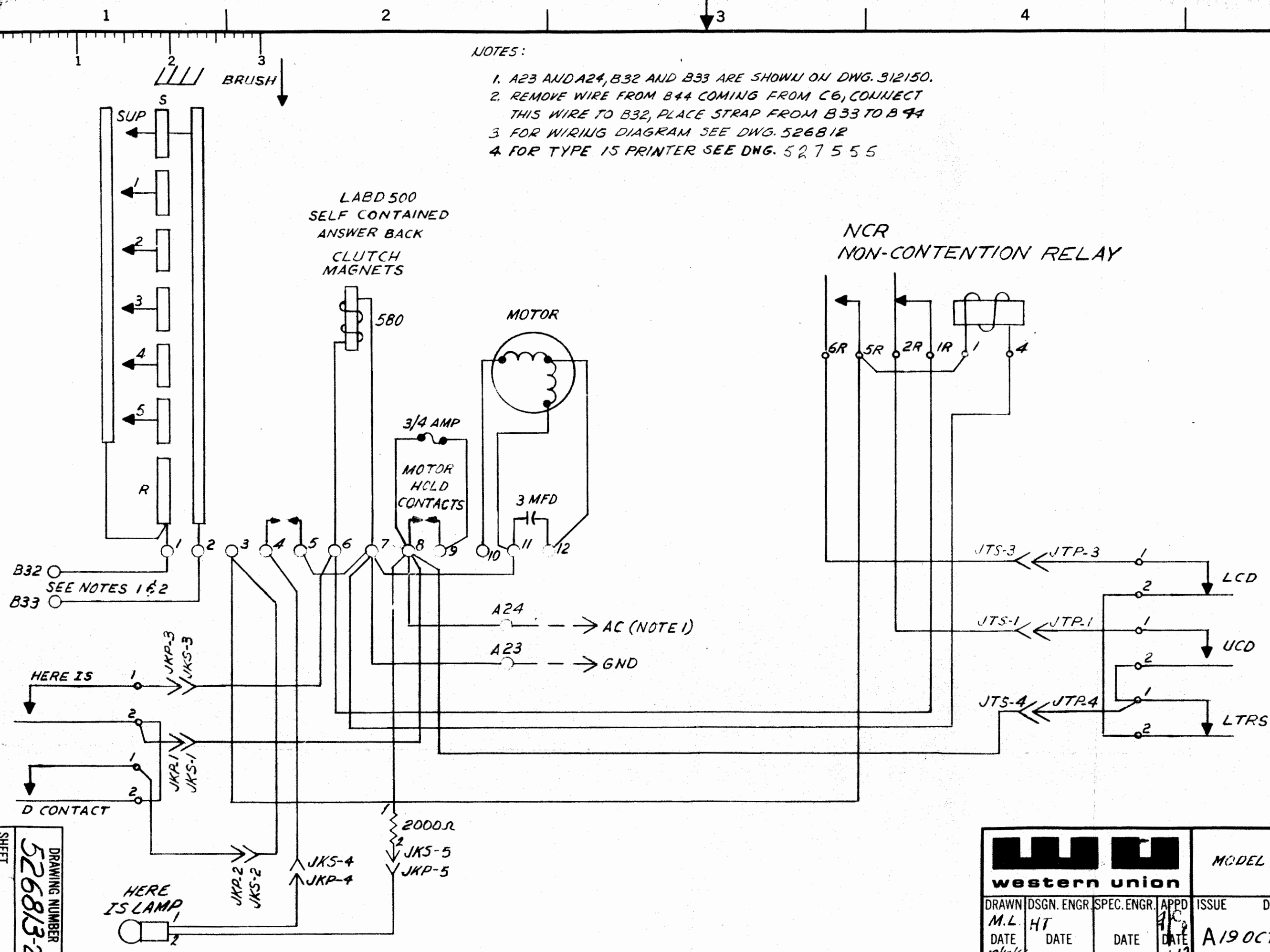
NOTES:  
 1. LUG 1 ON TS2 MUST BE NEGATIVE WITH RESPECT TO LUG 3 DURING IDLE CONDITION.  
 2. \*CONNECT 1 TO TERM. 8 AND 3 TO TERM. 7 ON LONG DISTANCE SUBSCRIBER PANEL SEE DWG. 177482  
 3. WHEN A LONG DISTANCE PANEL IS NOT USED, LOOP IS CONNECTED DIRECTLY TO TS2-1 AND TS2-3.

D- MAY 27, 1959 TITLE CHANGED 9233-A WAS 7300- AND 5-A FWS
APPROVED: <i>[Signature]</i> C- APR. 28, 1959
STRAP 2-3 ON PJ ADDED
APPROVED: <i>[Signature]</i> B- JUNE 2, 1958
TS1 WAS CHANGED TO A FOUR LUG TS AND POWER WIRING WAS ALSO CHANGED L.N.T. <i>[Signature]</i>
APPROVED: <i>[Signature]</i> A- NOV. 1, 1957
DRAWING NUMBER 177480-3
W. U. TEL. CO
TELEX SYSTEM TW 39
TELEPRINTER CONSOLE 9233-A B 5-A CONNECTIONS BETWEEN REMOTE CONTROL UNIT AND WIRING CABINET
SCALE: DRAWN: B.R.L. TRACED: CHECKED: ENGR'D: <i>[Signature]</i> APPROVED: <i>[Signature]</i>

REVISIONS
B-


NOTES:

1. A23 AND A24, B32 AND B33 ARE SHOWN ON DWG. 52150.
2. REMOVE WIRE FROM B44 COMING FROM C6, CONNECT THIS WIRE TO B32, PLACE STRAP FROM B33 TO B44
3. FOR WIRING DIAGRAM SEE DWG. 526812
4. FOR TYPE 15 PRINTER SEE DWG. 527555



WESTERN UNION PRESS, INC. REPROVAL NO. 4404

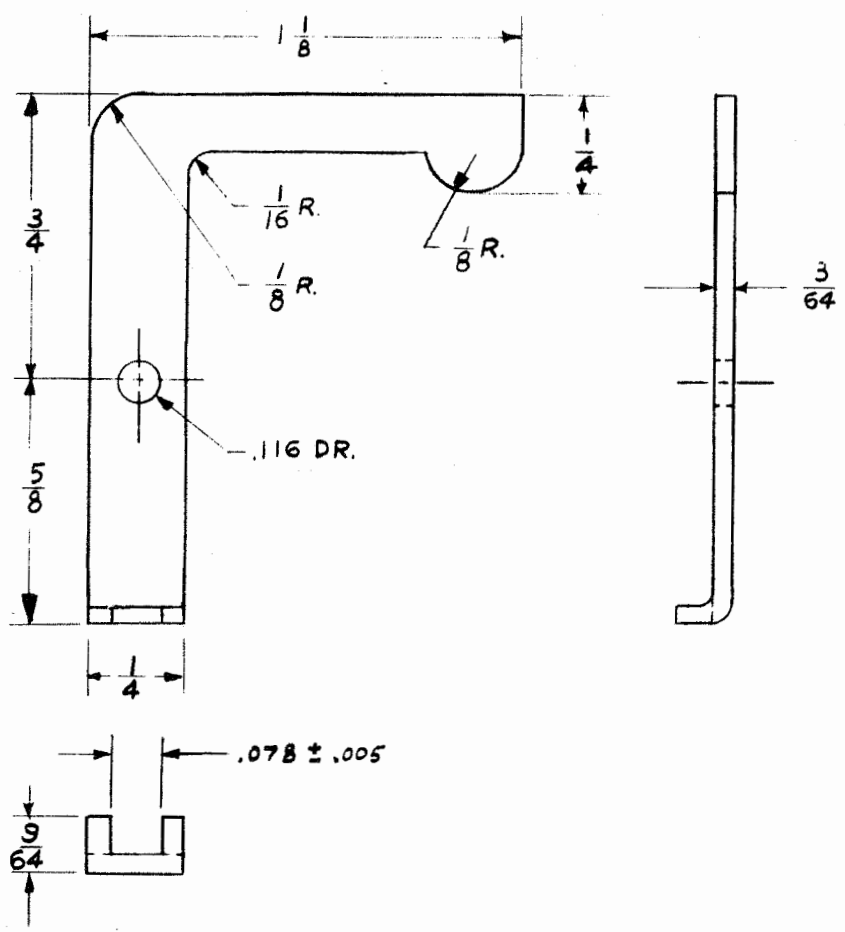
SHEET  
DRAWING NUMBER  
**526813-2**

 <b>western union</b>				MODEL 19 SET WITH LABD SCHEMATIC			
DRAWN M.L. DATE 19/10/66	DSGN. ENGR. HT DATE	SPEC. ENGR. DATE	APPD PC DATE 11/10/66	ISSUE DATE A19 OCT 66	DRAWING NUMBER <b>526813</b>	SIZE <b>2</b>	
					SHEET		

33579  
35042


REVISIONS

B-



FINISH NOTE: NICKEL PLATE DULL  
ASTM A166 TYPE KS

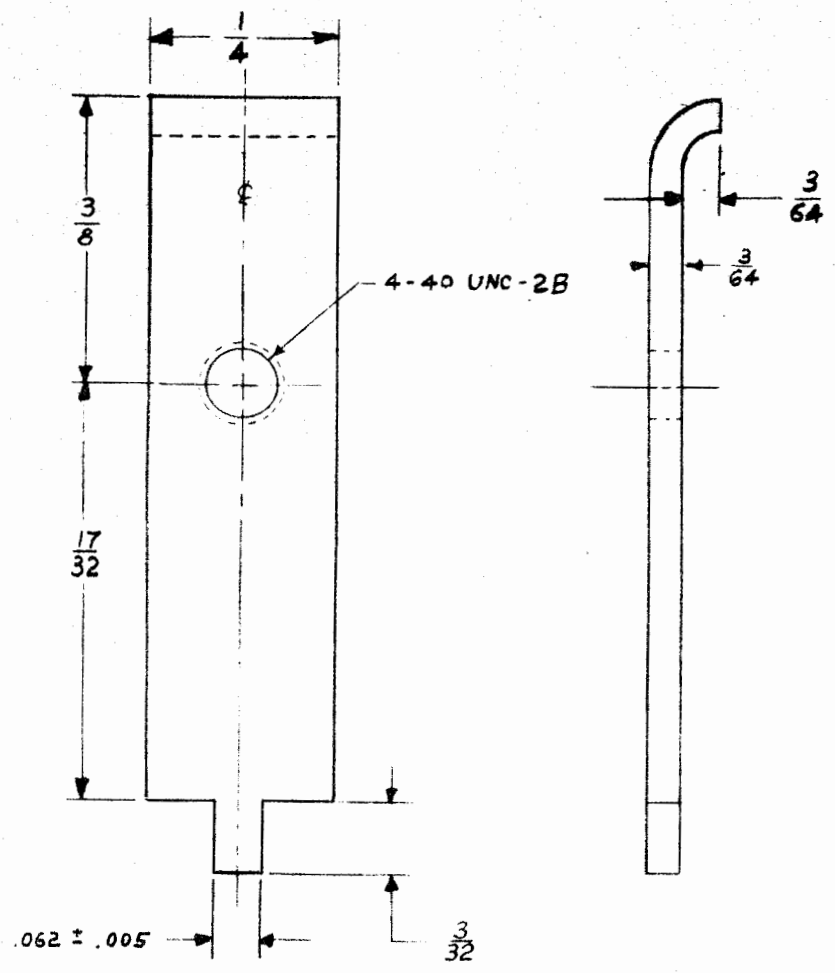
DRAWING NUMBER  
526814 -1  
SHEET

		MATERIAL: <b>C.R.S. (SAE 1010-1020)</b>		TOLERANCES UNLESS OTHERWISE SPECIFIED				ARM MODELS 15&19 SETS WITH LABD CONTACT OPERATING					
				DECIMAL	FRACTIONAL ± 1/32						DRAWN	DSGN. ENGR.	SPEC. ENGR.
				ANGULAR	BET. HOLES ± 1/64	R.L. DATE	HT DATE	DATE	DATE	A 20	OCT 66	526814	1
NEXT ASS'Y		SPEC. NO.		FINISH: SEE NOTE: DWG.		SCALE 2=1		DATE	DATE			SHEET	
APPLICATION						20-10-66			1-1-67				

33579  
35042


REVISIONS

B-



FINISH NOTE: NICKLE PLATE DULL  
ASTM A166 TYPE KS

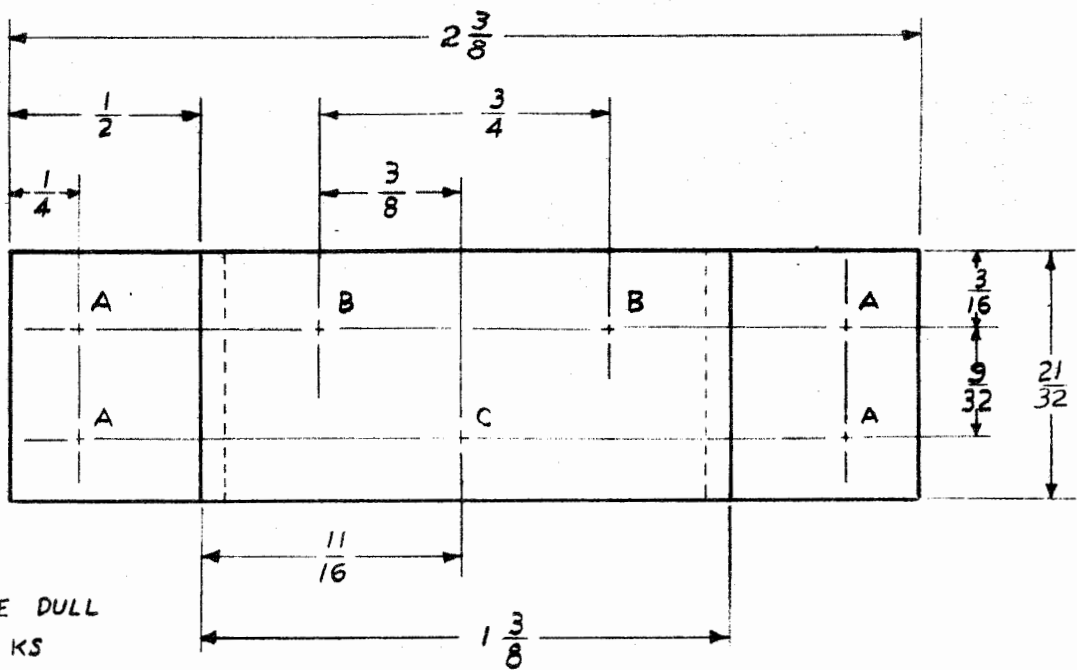
DRAWING NUMBER  
526815  
-1  
SHEET

		MATERIAL: C.R.S. (SAE 1010-1020)	TOLERANCES UNLESS OTHERWISE SPECIFIED		 <b>western union</b>		CLAMP MODELS 15, 19 SETS WITH LAB D CONTACT OPERATING ARM				
			DECIMAL	FRACTIONAL ± 1/32			DRAWN R.L. DATE 20-10-66	DSGN. ENGR. HT DATE	SPEC. ENGR. DATE	APPD DATE 1-6-67	ISSUE DATE A 20 OCT 66
NEXT ASS'Y	SPEC. NO.	FINISH: SEE NOTE	ANGULAR	BET. HOLES ± 1/64	SCALE 4=1					SHEET	
APPLICATION		DWG.									

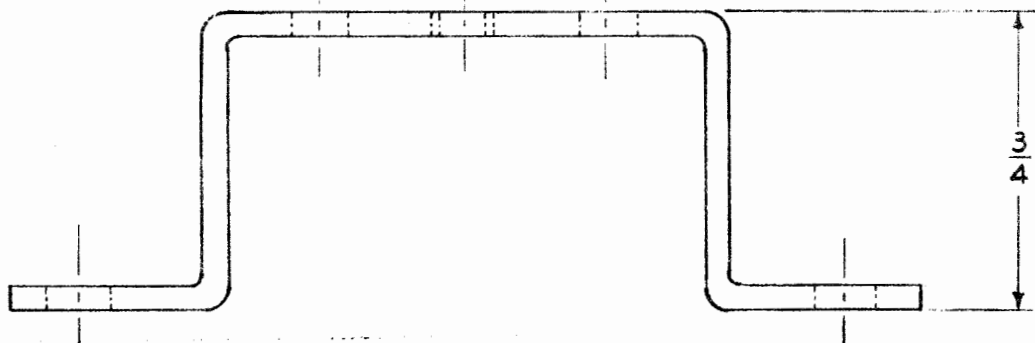
REPROV. NO. 440M  
11217  
N. Y.  
BROOKLYN, N. Y.  
INC.  
PRESS.  
GILVIE

REVISIONS

B-



FINISH NOTE: NICKEL PLATE DULL  
ASTM A166 TYPE KS



- A - .144 DR. (4)
- B - .159 DR. (2)
- C - 6-32 UNC-28(1)

DRAWING NUMBER  
**526816**  
-1  
SHEET

MATERIAL:  
CRS (SAE 1010-1020)  
.060 ± .005 THICK

TOLERANCES UNLESS OTHERWISE SPECIFIED

DECIMAL	FRACTIONAL
	± 1/32

ANGULAR	BET. HOLES
	± 1/64

SCALE 2 = 1



BRACKET, RELAY MOUNTING  
MODELS 15 & 19 SETS WITH LABD

NEXT ASS'Y SPEC. NO.

FINISH: SEE NOTE  
DWG.

APPLICATION

DRAWN	DSGN. ENGR.	SPEC. ENGR.	APPD
R.L.	HT		JAC
DATE	DATE	DATE	DATE
20-17-66			1/6/67

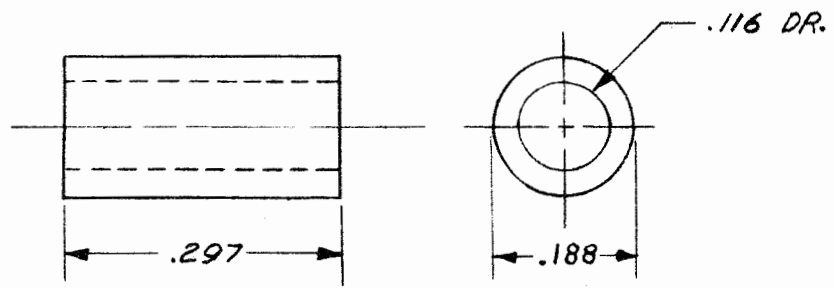
ISSUE	DATE	DRAWING NUMBER	SIZE
A20	OCT. 66	526816	1
		SHEET	




3631  
5978  
042

REVISIONS

B-

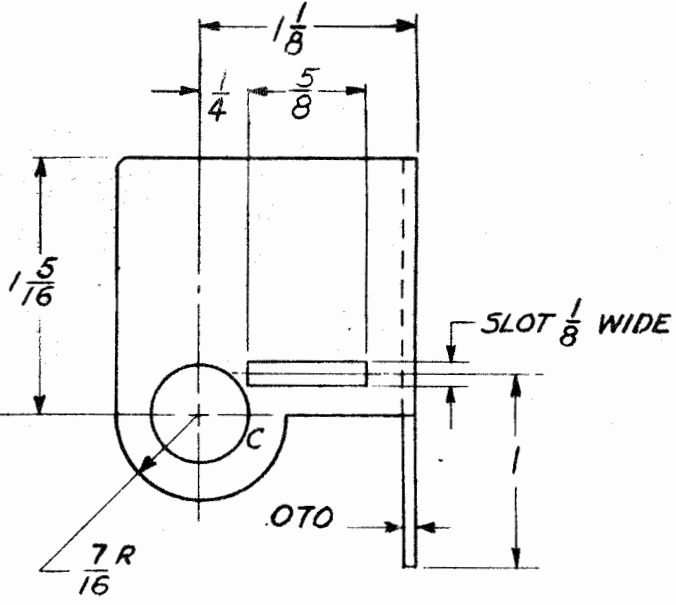
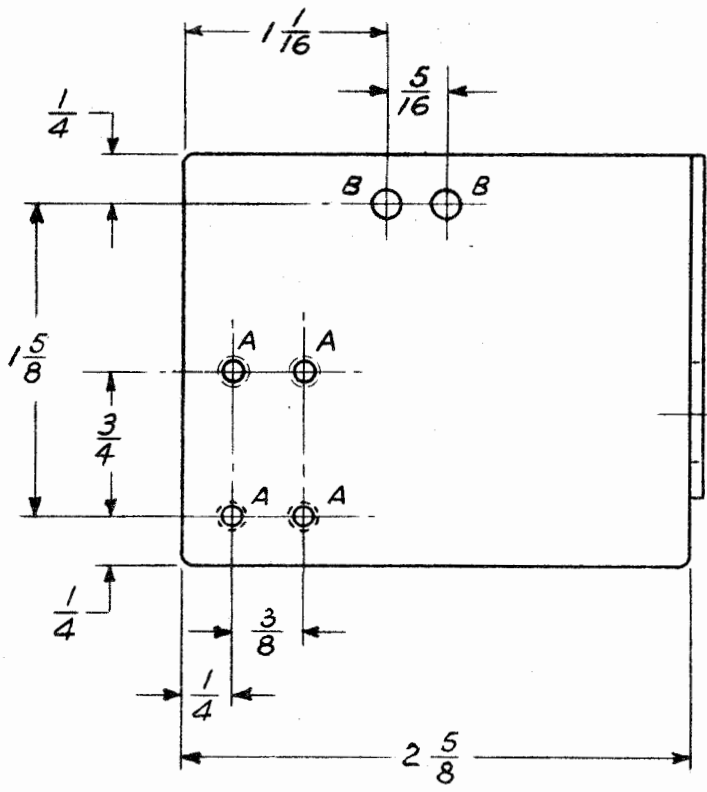


DRAWING NUMBER  
526817-1  
SHEET

MATERIAL: <b>BAKELITE</b>		TOLERANCES UNLESS OTHERWISE SPECIFIED		 <b>western union</b>		BUSHING, CONTACT MODELS 15&19 SET WITH LABD				
		DECIMAL <i>±.005</i>	FRACTIONAL			ISSUE	DATE	DRAWING NUMBER	SIZE	
		ANGULAR	BET. HOLES	DRAWN FJS DATE 21-10-66	DSGN. ENGR. HT DATE	SPEC. ENGR. DATE	APPD DATE 1/4/67	A 21 OCT 66	526817	1
NEXT ASS'Y		SCALE 4" = 1"						SHEET		
APPLICATION		FINISH: DWG.								
SPEC. NO.										

REVISIONS

B-

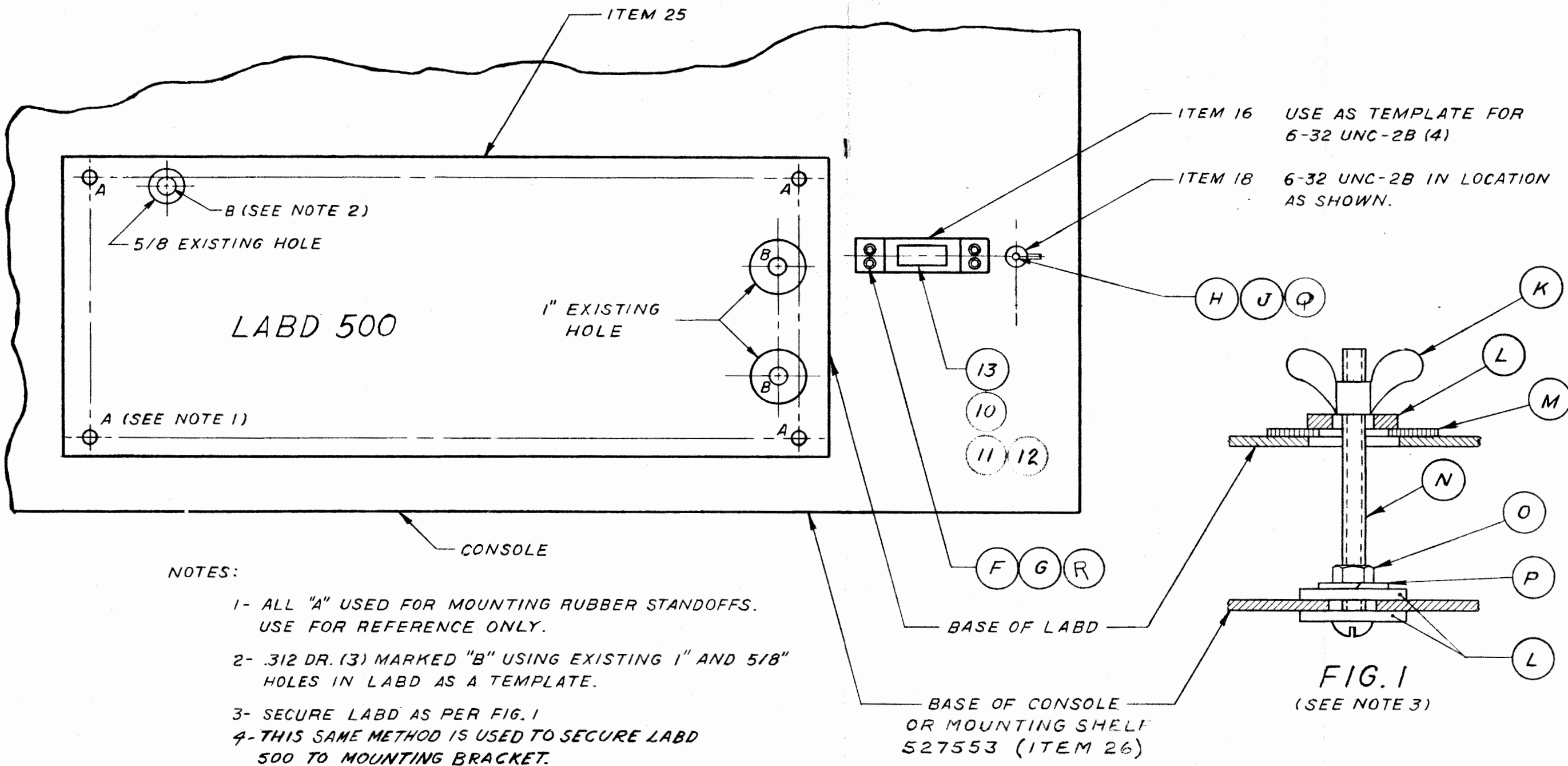


DRILLINGS :

- A - 4-40 UNC-2B(4)
- B - .147 DRILL (2)
- C - 1/2 DRILL

SHEET  
 DRAWING NUMBER  
**526818-1**

		<b>MATERIAL:</b> <i>C.R.S. SAE (1010-1020)</i> <i>.070 THICK</i>		<b>TOLERANCES UNLESS OTHERWISE SPECIFIED</b> DECIMAL FRACTIONAL $\pm 1/32$				<b>CONTACT BRACKET</b> <b>MODELS 15 &amp; 19 SETS WITH LABD</b>				
		<b>FINISH:</b> <i>NICKEL PLATE DULL</i> <i>ASTM A486 TYPE KS</i> <b>DWG.</b>		ANGULAR BET. HOLES $\pm 1/64$								DRAWN M.T. DATE 10/2/66
<b>NEXT ASS'Y</b>		<b>SPEC. NO.</b>		<b>SCALE 1"=1"</b>						SHEET		



NOTES:

- 1- ALL "A" USED FOR MOUNTING RUBBER STANDOFFS. USE FOR REFERENCE ONLY.
- 2- .312 DR. (3) MARKED "B" USING EXISTING 1" AND 5/8" HOLES IN LABD AS A TEMPLATE.
- 3- SECURE LABD AS PER FIG. 1
- 4- THIS SAME METHOD IS USED TO SECURE LABD 500 TO MOUNTING BRACKET.

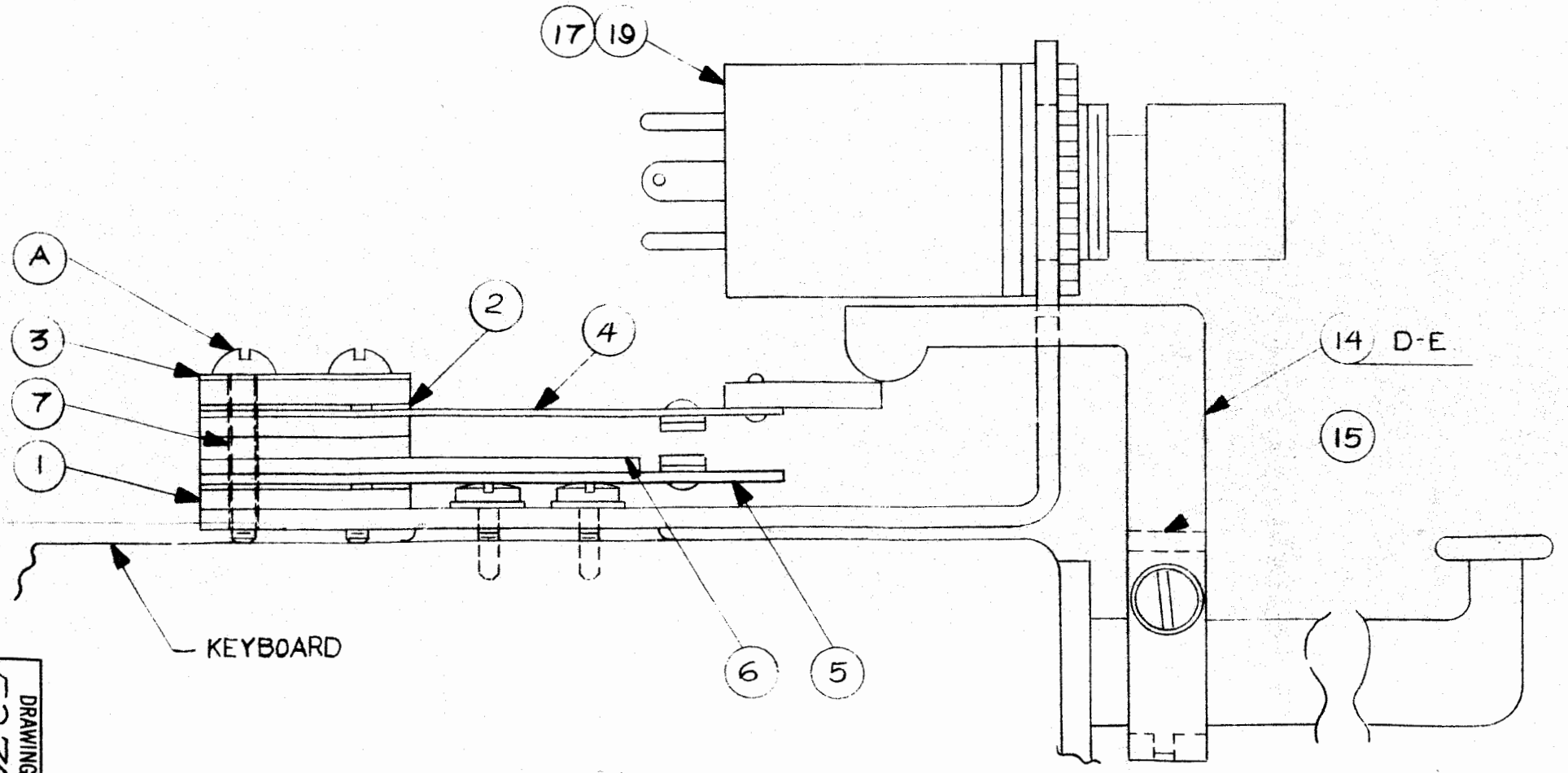
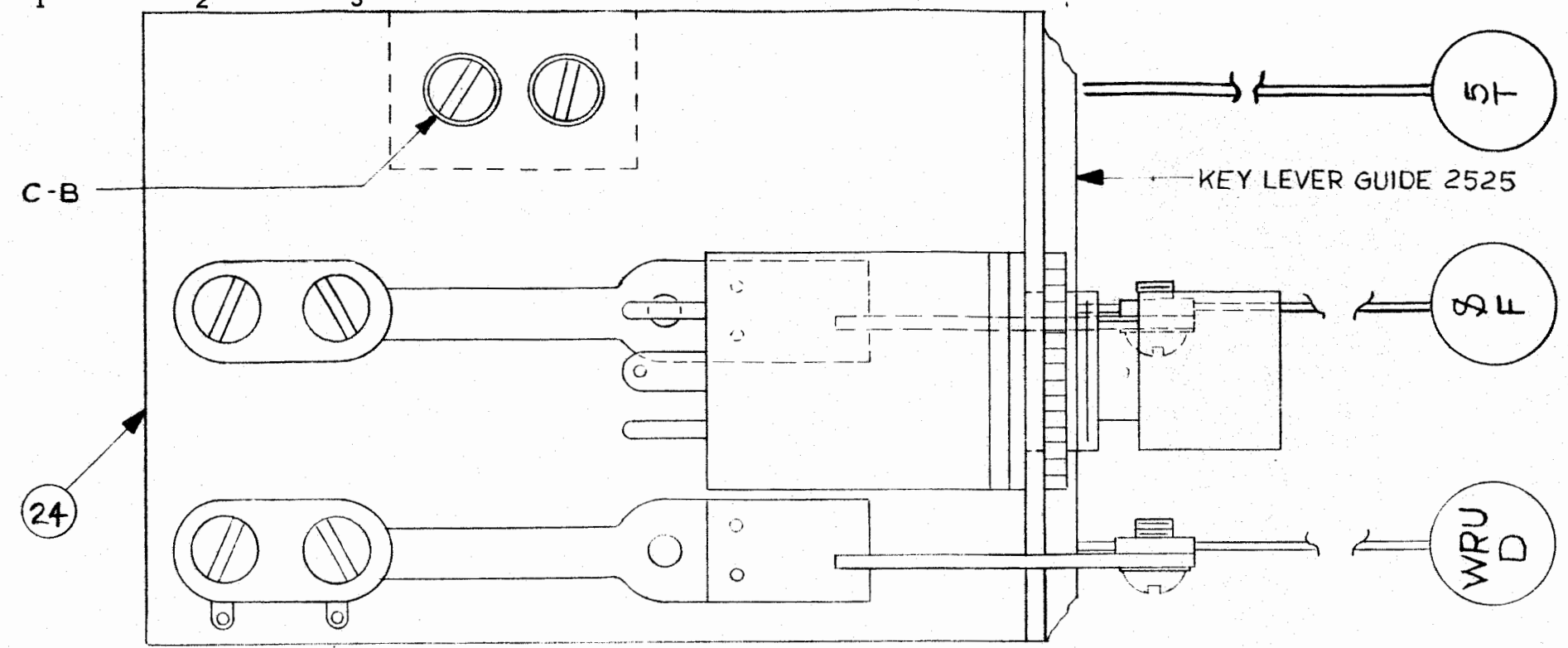
DRAWING NUMBER  
 527553-2  
 SHEET

				MODELS 15&19 SETS WITH LABD INTALLATION OF LABD				
DRAWN	DSGN.	ENGR.	SPEC. ENGR.	APPD	ISSUE	DATE	DRAWING NUMBER	SIZE
I.S.	HT			AK	A 18	NOV. 66	527553	2
DATE	DATE	DATE	DATE	DATE			SHEET	
16-11-66				LVG				

REVISIONS

B-

REFERENCE DRAWINGS  
 BILL OF MATERIAL  
 WIRING DIAGRAM 526813



DRAWING NUMBER  
 527554-2  
 SHEET

				MODELS 15 & 19 SETS WITH LABD INSTALLATION OF "D" OR "F" AND HERE IS CONTACTS			
DRAWN	DSGN. ENGR.	SPEC. ENGR.	APPD	ISSUE	DATE	DRAWING NUMBER	SIZE
HRS	HT			A 4	JAN 67	527554	2
DATE	DATE	DATE	DATE			SHEET	
11/7/66							

DRAWING NUMBER

527555-1

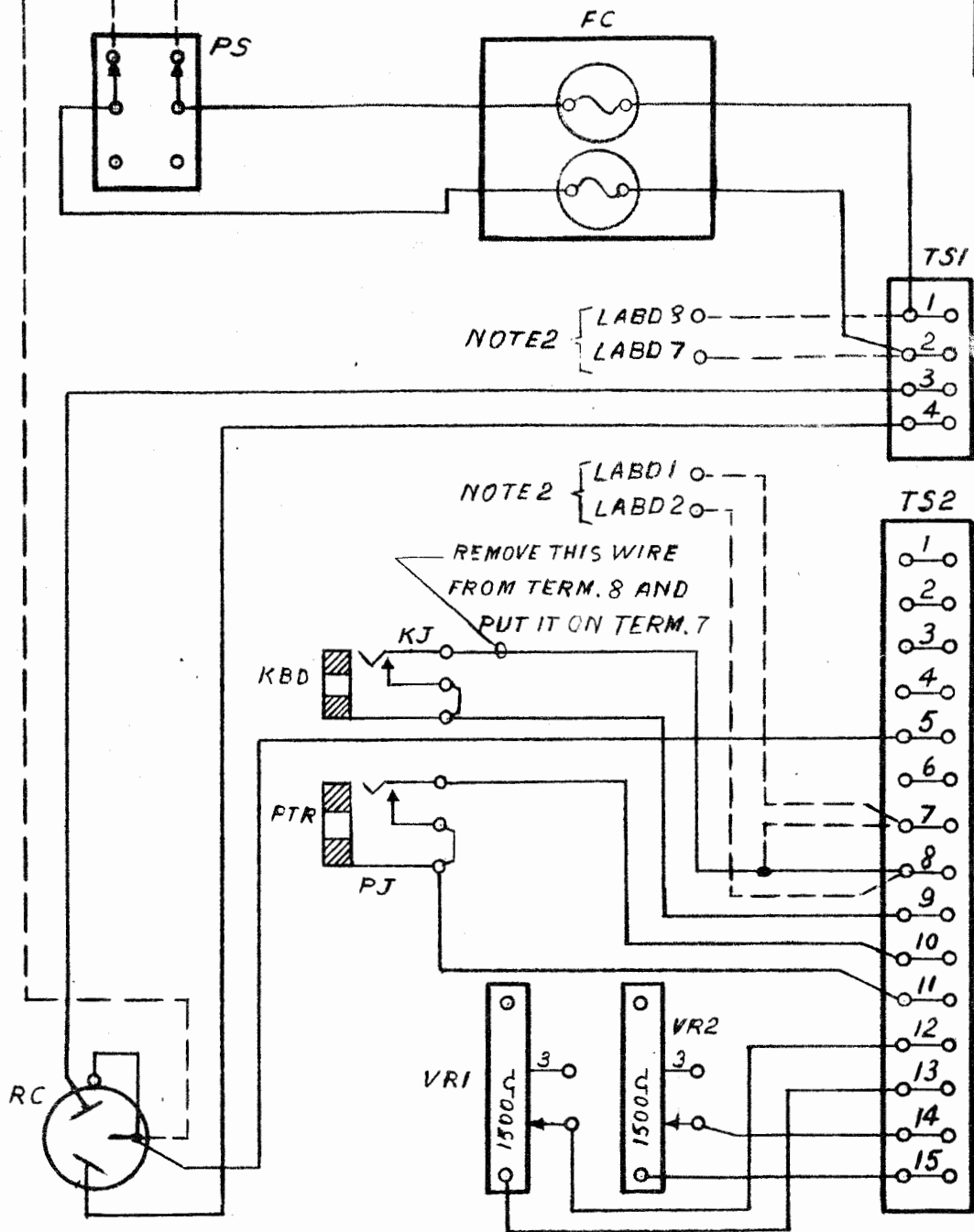
SHEET

REVISIONS

B-

FRAME GND GND 120VAC

WIRING CABINET IN TELEPRINTER CONSOLE 7300-A & 5A



NOTE 2

NOTE 2

REMOVE THIS WIRE FROM TERM. 8 AND PUT IT ON TERM. 7

REFERENCE DWGS.:

- 1- SEE DWG. 177480 FOR OUTGOING WIRING
- 2- SEE DWG. 526813

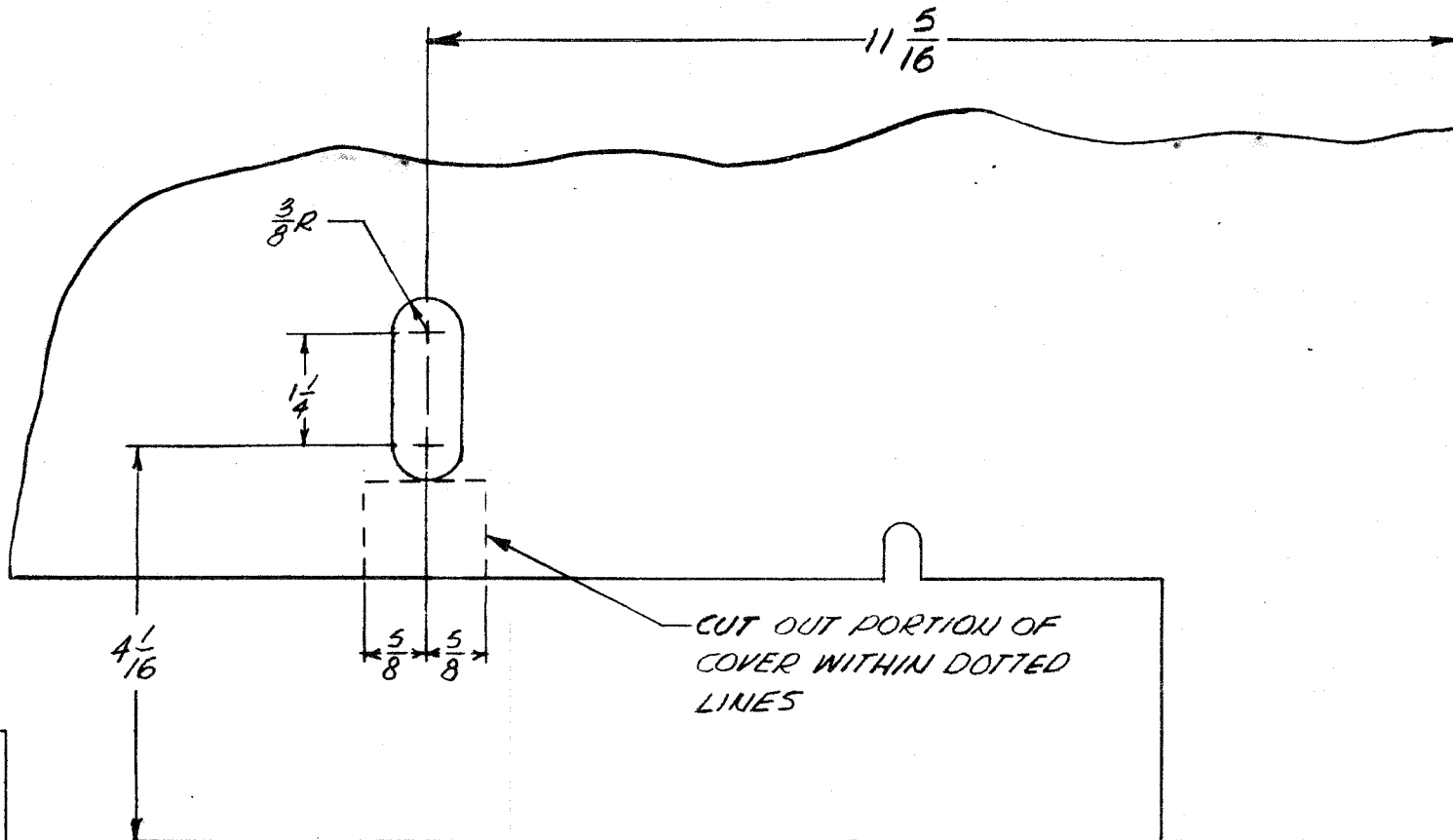


WIRING DIAGRAM  
MODEL 15 PRINTER WITH LABD

DRAWN	DSGN. ENGR.	SPEC. ENGR.	APPD	ISSUE	DATE	DRAWING NUMBER	SIZE
N.K.	HT			A4	JAN 67	527555	1
DATE	DATE	DATE	DATE			SHEET	
11/21/66			1/6/67				

REVISIONS

B-



CUT OUT PORTION OF COVER WITHIN DOTTED LINES

SHEET

DRAWING NUMBER  
527595-1

REPROVAL NO. 440M

$\frac{1}{2}$  SCALE.



MODELS 15 AND 19 SETS  
WITH LABD MODIFICATION  
OF MAIN DOOR

DRAWN	DSGN. ENGR.	SPEC. ENGR.	APPD	ISSUE	DATE	DRAWING NUMBER	SIZE
<i>E.A.</i>	<i>HT</i>		<i>AC</i>				
DATE	DATE	DATE	DATE				
1/9/67			1-3-67	A-9	JAN 67	527595	1
						SHEET	