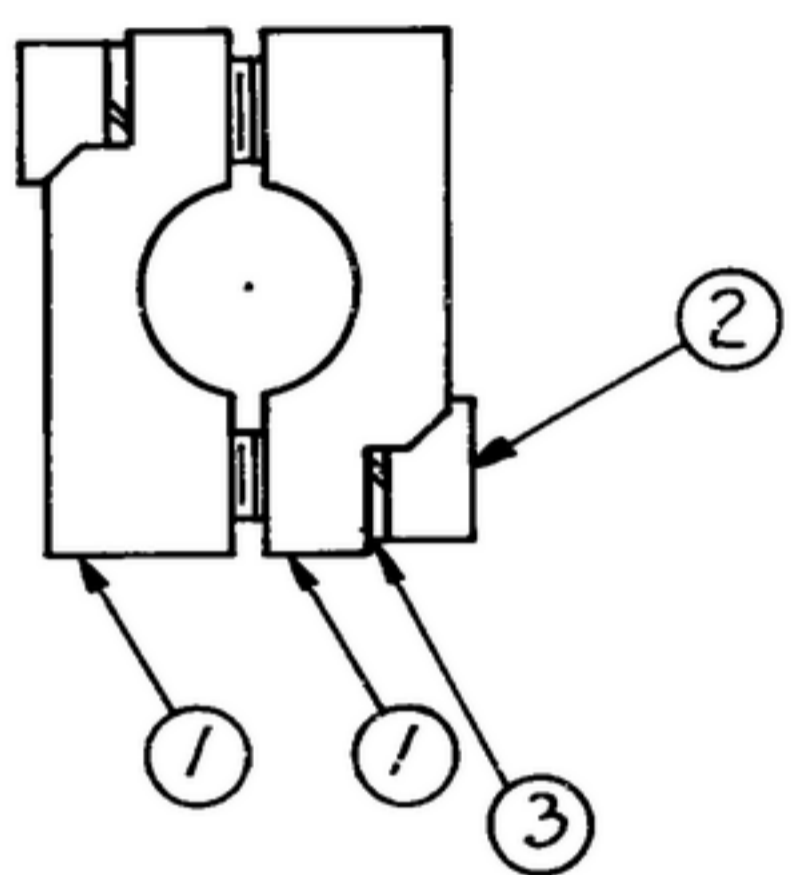


| REVISIONS | | | |
|-----------|-------------|------|----------|
| LTR. | DESCRIPTION | DATE | APPROVED |



| ITEM NO. | QTY REQD | PART OR IDENTIFYING NUMBER | NOMENCLATURE OR DESCRIPTION | SPECIFICATION | NOTE |
|----------|----------|----------------------------|-----------------------------|---------------|------|
| 3 | 2 | MS35338-134 | WASHER, LOCK | FF-W-84 | |
| 2 | 2 | MS16995-2 | SCREW #2-56 UNC-3A | FF-S-86 | |
| 1 | 2 | SC-B-730034 | CLAMP | | |

| | | | | | | |
|---|--|------|---|-----------|---|-------------|
| UNLESS OTHERWISE SPECIFIED DIMENSIONS ARE IN INCHES TOLERANCES ON FRACTIONS _____ DECIMALS _____ ANGLES _____ | APPLICATION | | AUTHENTICATION | | PARTS LIST | |
| | | | DRAWN <i>EJD</i> | | U. S. ARMY ELECTRONICS COMMAND PROCUREMENT AND PRODUCTION DIRECTORATE FORT MONMOUTH, NEW JERSEY 07703 | |
| | | | CHECKED <i>REA</i> | | CLAMP ASSEMBLY | |
| | | | VERIFIED TP EG-1 <i>REA</i> | | | |
| | SM-D-144841 SC-DL-144500 SM-D-248975 SC-DL-248775 SM-D-343600 SC-DL-248775 | | APPROVED <i>REA ECB</i> DATE 18 MAR 74 | | SIZE B CODE IDENT N 0.80063 | SC-B-730033 |
| NEXT ASSY USED ON | | DATE | | SCALE 4/1 | SHEET _____ | |

WHEN REFERRING TO THIS DRAWING STATE DRAWING NO., APPLICABLE ISSUE LETTER, IF ANY, & DATE