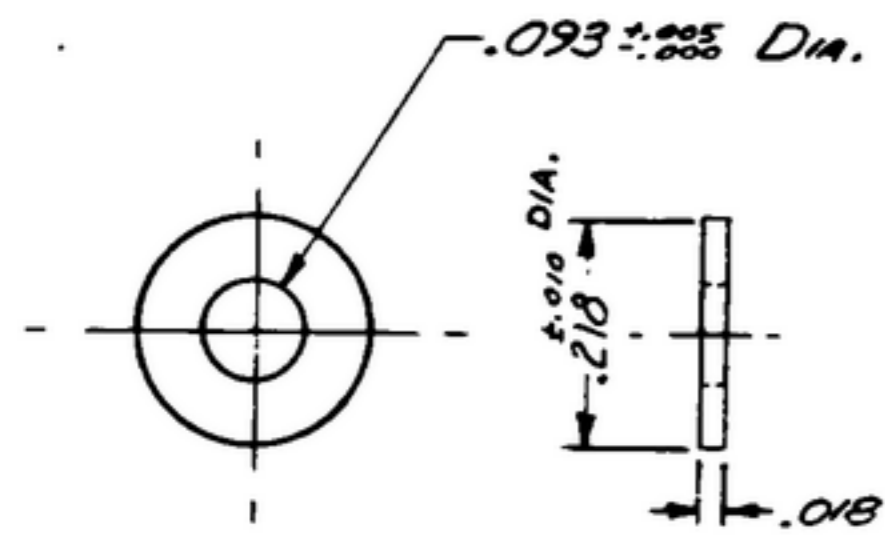


NOTICE: When Government drawings, specifications, or other data are used for any purpose other than in connection with a definitely related Government procurement operation, the United States Government thereby incurs no responsibility or any obligation whatsoever; and the fact that the Government may have furnished, furnished, or in any way supplied the said drawings, specifications, or other data is not to be regarded by implication or otherwise as in any manner licensing the holder or any other person or corporation, or conveying any rights or permission to manufacture, use or sell any patented invention that may in any way be related thereto.

SYM	DESCRIPTION	DATE	APPROVAL
A ₂	A ₁ - NOTE 1 WAS "COMP. G"; NOTE 2 WAS "PROCESS 25.01 PER MIL-P-12011". A ₂ - ADDED SM-C-283265, SC-DL-248775.	8 OCT. 59	42428-PC-59-A1-51 REV'D PHE



NOTES:

- (A₁) 1. - STEEL COMP. 302 1/4 HD. PER SPEC. MIL-S-5059
- 2. - FINISH: E 300 PER SPEC. MIL-F-14072.

NOTE:

*FOR INFORMATION ONLY, CONTRACTOR MAY AT HIS OPTION DEVIATE FROM THESE PROCESS DETAILS

REQD.	PART NO.	DESCRIPTION	DATE	SPEC	NOTE
		WASHER			
UNLESS OTHERWISE SPECIFIED DIMENSIONS ARE IN INCHES TOLERANCES ON FRACTIONS ± _____ DECIMALS ± .005 ANGLES ± _____ COMMERCIAL TOLERANCES APPLY TO STOCK SIZES ALL SURFACES ✓		AUTHENTICATION DRAWN 21852-PN 50-23 TRACED PHOTO CHECKED <i>Hum</i> VERIFIED <i>POBR</i> APPROVED <i>POBR</i> REVIEWED <i>PME</i> DATE 1-JUN-53	DEPARTMENT OF THE ARMY SIGNAL CORPS ENGINEERING LABORATORIES FORT MONMOUTH NEW JERSEY	SCALE 4/1 FINISH SEE NOTE 1	SM-B-170789

WHEN REFERRING TO THIS DRAWING STATE DRAWING NO., APPLICABLE ISSUE SYMBOL AND DATE