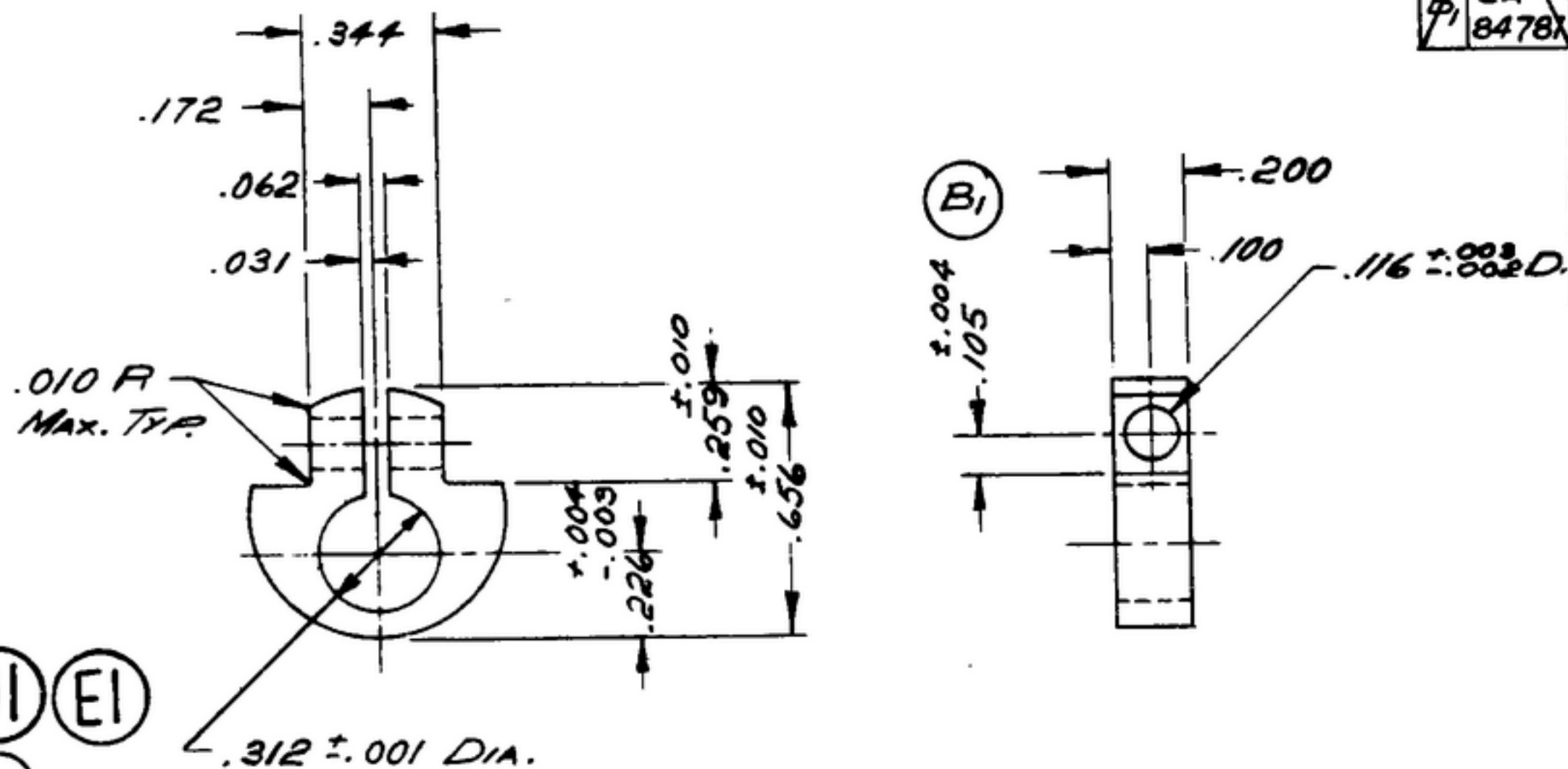


1.9

NOTICE: When Government drawings, specifications, or other data are used for any purpose other than in connection with a definitely related Government procurement operation, the United States Government thereby incurs no responsibility or obligation, whatsoever, and the fact that the Government may have furnished, or in any way supplied the said drawings, specifications, or other data is not to be regarded by implication or otherwise as in any manner forming the basis or any other patent or copyright, or conveying any rights or permission to manufacture, use or sell any patented invention that may in any way be related thereto.

NEXT ASSEMBLY	USED ON	SWE
SM-D-178409	SC-DL-170759	APPROVAL
SM-D-343600	SC-DL-248775	SY
SM-D-248975		M
SM-D-343619		CA 8478X

SYM	DESCRIPTION	DATE	APPROVAL
A <sub>3</sub>	A <sub>1</sub> -RENUMBERED NOTES & ADDED FINISH NOTE. A <sub>2</sub> -ADDED APPL. SM-D-343600, SM-D-248975, SM-D-343619, SC-DL-248775. A <sub>3</sub> -ADDED "7075 CONDITION" TO NOTE 2.	8 OCT. 59	42428-PC-59-A1-51 REV'D.
B <sub>1</sub>	B <sub>1</sub> -.105 ± .004 DIM. WAS .100 ± .003.	17 MAY 60	42428-PC-59 REV'D PME
C <sub>1</sub>	(1) FIN. WAS E511.	17 JULY 1962	L.T. JM E.D.B.
D	(1) MATL SPEC REF REV, ALLOY WAS 7075.	10 MAR 1966	JLC JM R.P.E.D.B.
E	(1) ALLOY WAS 5454 PER SPEC QQ-A-200/6.	29 OCT 69	JLC EDB JMC RP
F	MAT'L WAS ALUM.	20 JUL 72	EC-1 (JR)



(DI) (EI)  
(C<sub>1</sub>)

NOTES: (A<sub>1</sub>)

- 1.-FINISH E 513 PER MIL-F-14072.
2. CORR. RES. STEEL, CL. 303, TYPE A, PER SPEC. QQ-S-763 (A<sub>3</sub>)
- 3.-.062 SLOT MAY VARY ±2° FROM POSITION SHOWN.
- 4.-REMOVE ALL BURRS AND SHARP EDGES.

NOTE:  
\*FOR INFORMATION ONLY,  
CONTRACTOR MAY AT HIS  
OPTION DEVIATE FROM  
THESE PROCESS DETAILS

UNLESS OTHERWISE SPECIFIED	AUTHENTICATION	<b>CLAMP</b>	DEPARTMENT OF THE ARMY SIGNAL CORPS ENGINEERING LABORATORIES FORT MONMOUTH NEW JERSEY
DIMENSIONS ARE IN INCHES	DRAWN 21852 PM 50-BA		
TOLERANCES ON	TRACED PHOTO		
FRACTIONS ±	CHECKED RMY		
DECIMALS ± .005	VERIFIED P.D.B.R.		
ANGLES ±	APPROVED P.D.B.R.	SCALE 1/1	FINISH 90-583
COMMERCIAL TOLERANCES APPLY TO STOCK SIZES	REVIEWED PME	<b>SM-B-178414</b>	
ALL SURFACES ✓	DATE 27 MAY 53	WHEN REFERRING TO THIS DRAWING STATE DRAWING NO., APPLICABLE ISSUE SYMBOL AND DATE	