

Fig. 2-30P

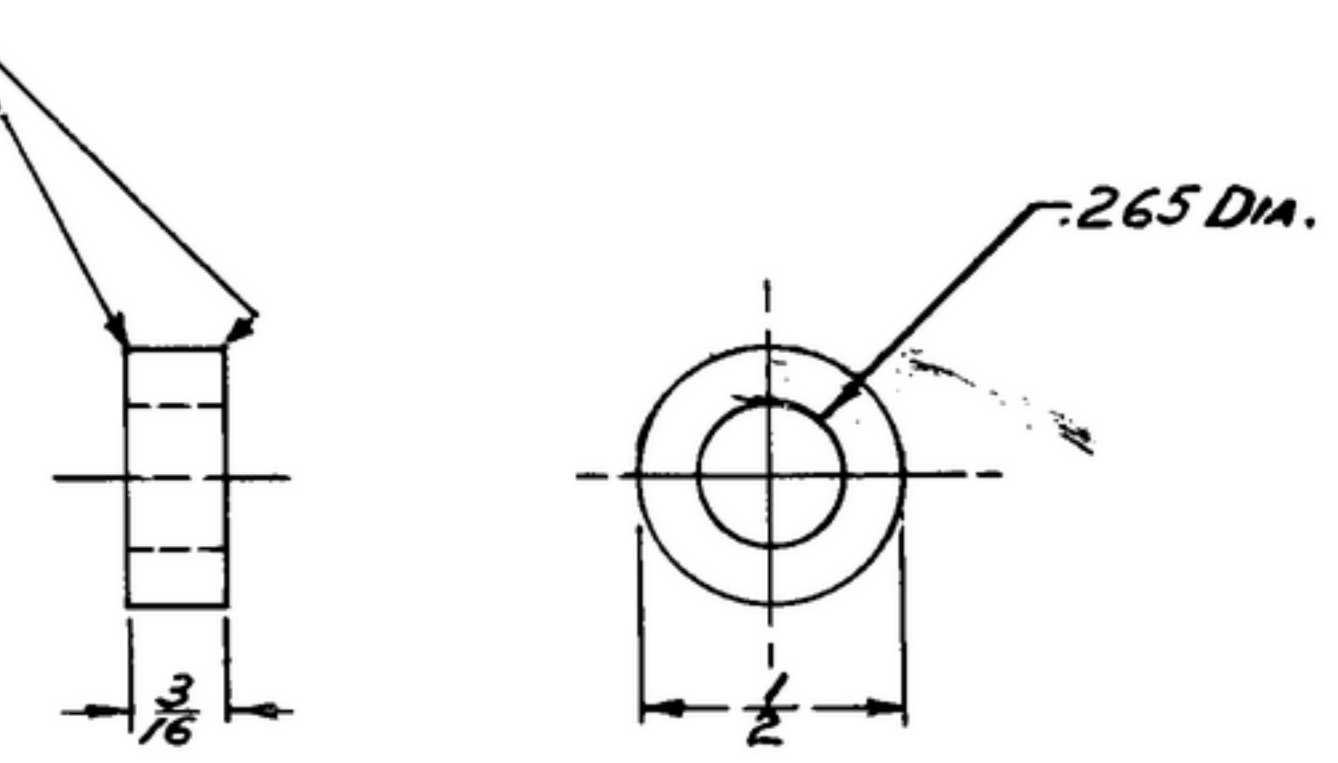
506 6853 002 R-991

NOTICE: WHEN GOVERNMENT DRAWINGS, SPECIFICATIONS, OR OTHER DATA ARE USED FOR ANY PURPOSE OTHER THAN IN CONNECTION WITH A DEFINITELY RELATED GOVERNMENT PROCUREMENT OPERATION, THE UNITED STATES GOVERNMENT THEREBY INCURS NO RESPONSIBILITY FOR ANY OMISSIONS WHATSOEVER, AND THE FACT THAT THE GOVERNMENT MAY HAVE FORMULATED, PROVIDED, OR IN ANY WAY SUPPLIED THE SAID DRAWINGS, SPECIFICATIONS, OR OTHER DATA IS NOT TO BE CONSTRUED BY IMPLICATION OR OTHERWISE AS IN ANY MANNER LICENSING THE HOLDER OR ANY OTHER PERSON OR CORPORATION, OR CONFERRING ANY RIGHTS OR PERMISSION TO MANUFACTURE, USE, OR SELL ANY PATENTED INVENTION THAT MAY IN ANY WAY BE RELATED THERETO.

NOTE:
 *FOR INFORMATION ONLY,
 CONTRACTOR MAY AT HIS
 OPTION DEVIATE FROM
 THESE PROCESS DETAILS

* SWE APPROVAL		REVISIONS		
SYM	DESCRIPTION	DATE	APPROVAL	
SYM PR10042-3				
A ₂	A ₁ - WAS QQ-A-354. A ₂ - ADDED APPL. SM-C-248970, SC-DL-248775.	5 OCT. 59	42428-PC -59-A1-51 REV'D. PME	

BREAK CORNERS



(A₁) ALUMINUM ALLOY, COND T, PER SPEC QQ-A-26B.

QTY	PART NO.	DESCRIPTION	MATL	MATL SPEC
LIST OF MATERIAL				

(A ₂)	SM-C-248970	SC-DL-248775	UNLESS OTHERWISE SPECIFIED DIMENSIONS ARE IN INCHES TOLERANCES ON FRACTIONS DECIMALS ANGLES ±1/64 ±.005	AUTHENTICATION		POST	SIGNAL CORPS ENGINEERING LABORATORIES FORT MONMOUTH NEW JERSEY
	SM-D-178727	SC-DL-178767		DRAWN 21852-PH-50-93	TRACED PHOTO		
NEXT ASSY	USED ON	VERIFIED PO BR	CHECKED K	APPROVED PO BR			
APPLICATION		REVIEWED PME	DATE 26-OCT-53	SCALE 2/1			