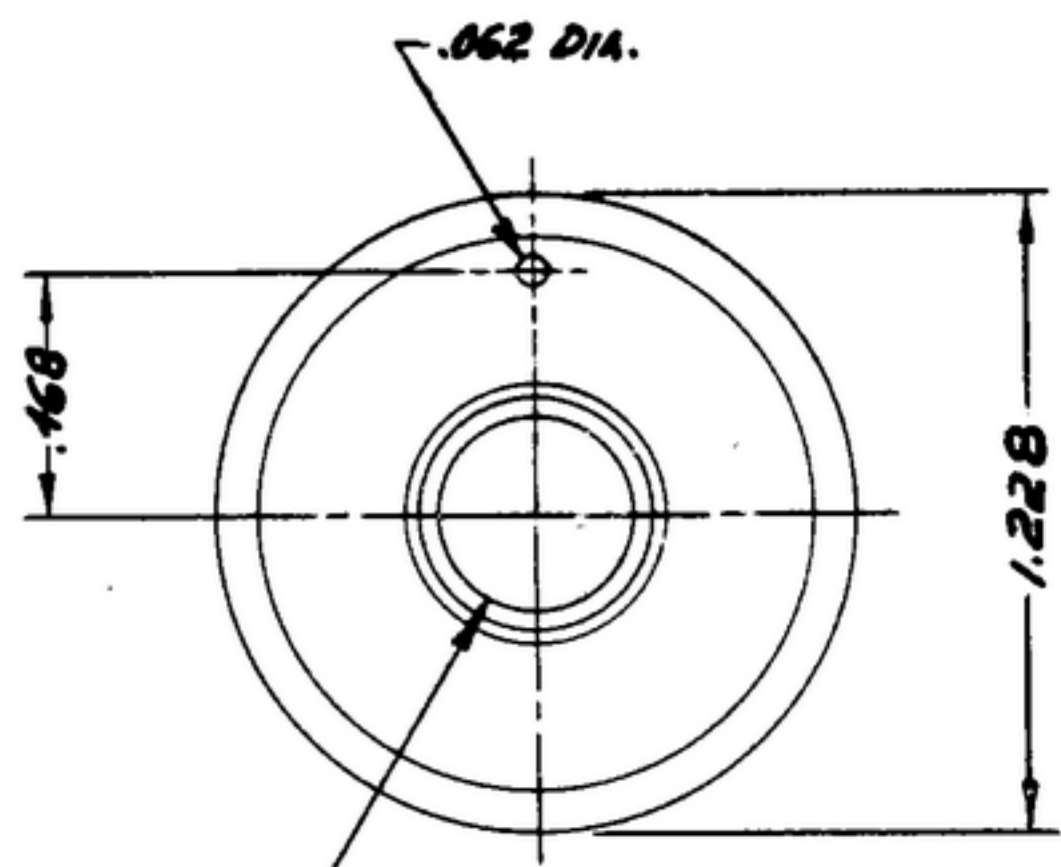


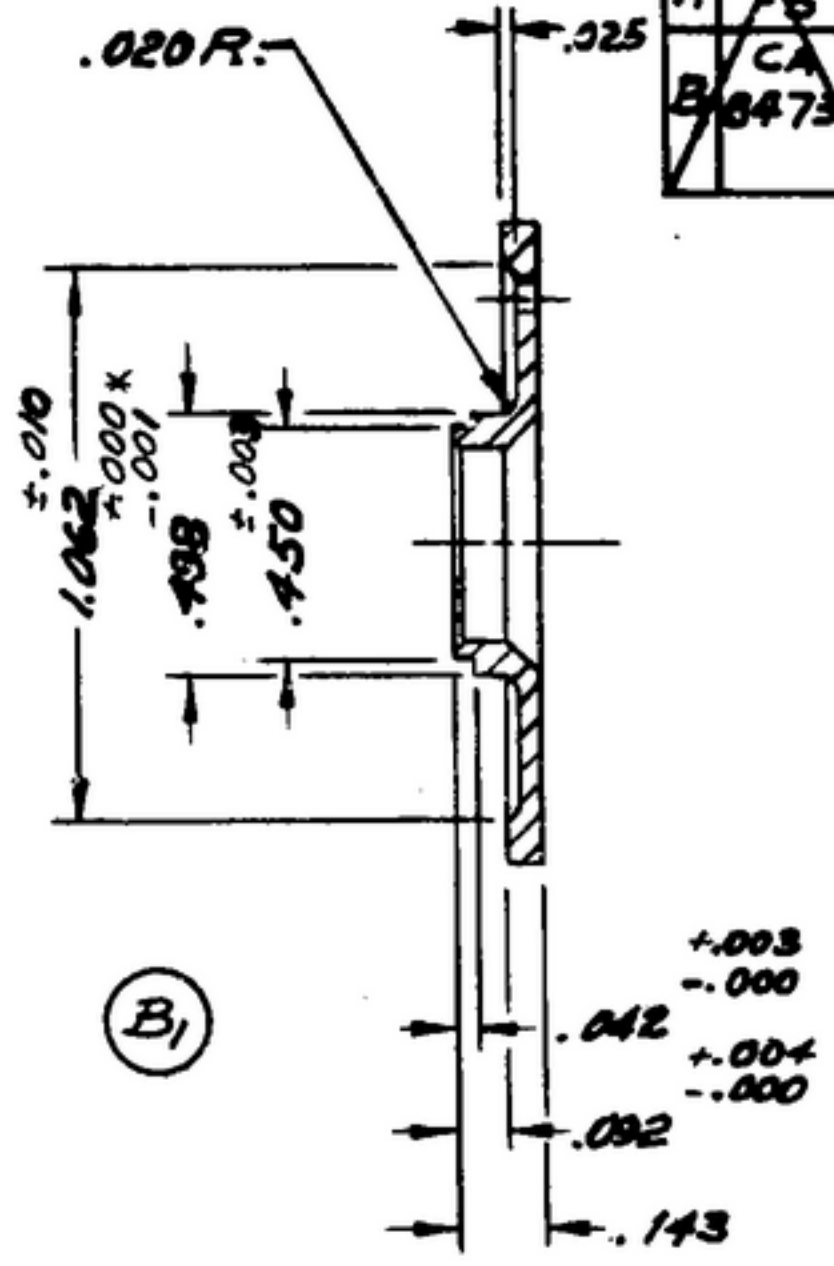
506-1056-00E R-391

NOTICE: When Government drawings, specifications, or other data are used for any purpose other than in connection with a definitely related Government procurement operation, the United States Government thereby incurs no responsibility or any obligation whatsoever and the fact that the Government may have furnished, furnished, or in any way supplied the said drawings, specifications, or other data is not to be regarded by implication or otherwise as in any manner granting the holder or any other person or corporation, or conveying any rights or permission to manufacture, use or sell any patented invention that may in any way be related thereto.

NEXT ASSEMBLY	USED ON	SWE. #	SYN	DESCRIPTION	DATE	APPROVAL
SM-B-178858	SC-DL-178467	APPROVAL	A ₂	A ₁ - WAS COND. H, COMP. B, QQ-B-611; A ₂ - ADDED APPL. SM-B-178858, SC-DL-248775.	6 OCT. 59	42428-PC-59-AI-SI REV'D.
SM-B-178858	SC-DL-248775	S Y H A S CA B 84738	B ₁	B ₁ - 1/32 R. DELETED.	7 APRIL 60	42428-PC-59 REV'D PME



±.0005 *
-.0000
.350 DIA.
15° X 82° ± 3° FACE SIDE
C&K .015 X 82° ± 3° HUB SIDE



(B₁)

(A₁) BRASS, TEMPER H, COM R22, PER SPEC QQ-B-626.
1- ECCENTRICITY BETWEEN DIAMETERS MARKED * , ON SAME CENTERLINE SHALL NOT EXCEED .002 TIR.
2- REMOVE ALL BURRS.

NOTE:
*FOR INFORMATION ONLY, CONTRACTOR MAY AT HIS OPTION DEVIATE FROM THESE PROCESS DETAILS

ISSUE	ISSUE NO.	DESCRIPTION	DATE	BY	NOTE
BLANK					
UNLESS OTHERWISE SPECIFIED DIMENSIONS ARE IN INCHES TOLERANCES ON FRACTIONS ± 1/64 DECIMALS ± .005 ANGLES ± _____ COMMERCIAL TOLERANCES APPLY TO STOCK SIZES ALL SURFACES ✓			AUTHENTICATION DRAWN 21832-PC 50-93 TRACED PHOTO CHECKED [Signature] VERIFIED P.D.B.R. APPROVED P.D.B.R. REVIEWED PME DATE 1-JULY-58		DEPARTMENT OF THE ARMY SIGNAL CORPS ENGINEERING LABORATORIES FORT MONMOUTH NEW JERSEY SM-B-178860
			SCALE 2/1		

WHEN REFERRING TO THIS DRAWING STATE DRAWING NO., APPLICABLE ISSUE SYMBOL AND DATE