

NOTICE: WHEN GOVERNMENT DRAWINGS, SPECIFICATIONS, OR OTHER DATA ARE USED FOR ANY PURPOSE OTHER THAN IN CONNECTION WITH A DEFINITELY RELATED GOVERNMENT PROCUREMENT OPERATION, THE UNITED STATES GOVERNMENT THEREBY INCURS NO RESPONSIBILITY NOR ANY OBLIGATION WHATSOEVER; AND THE FACT THAT THE GOVERNMENT MAY HAVE FORMULATED, PURCHASED, OR IN ANY WAY SUPPLIED THE SAID DRAWINGS, SPECIFICATIONS, OR OTHER DATA IS NOT TO BE REGARDED BY IMPLICATION OR OTHERWISE AS IN ANY MANNER LICENSING THE HOLDER OR ANY OTHER PERSON OR CORPORATION, OR CONFERRING ANY RIGHTS OR PERMISSION TO MANUFACTURE, USE, OR SELL ANY PATENTED INVENTION THAT MAY IN ANY WAY BE RELATED THERETO.

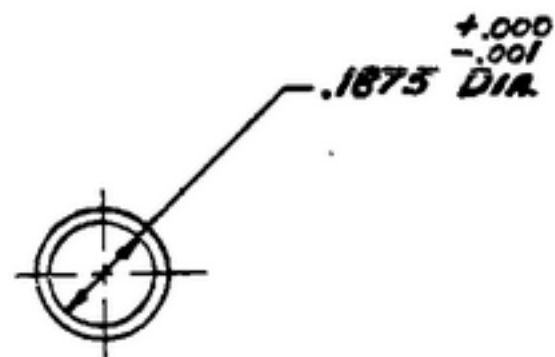
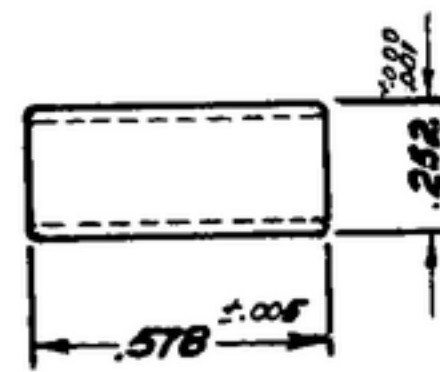
NOTE:
*FOR INFORMATION ONLY, CONTRACTOR MAY AT HIS OPTION DEVIATE FROM THESE PROCESS DETAILS

~~*SINE APPROVAL~~
~~SYM PR10072-3~~

REVISIONS			
SYM	DESCRIPTION	DATE	APPROVAL
A ₂	A ₁ -NOTE 1 AA-226-4 WAS #309006300. A ₂ -ADDED APPL. SM-B-178861, SC-DL-248775	6 OCT. 59	42428-PC-59-A1-51 REV'D. P.M.E.



END DETAIL
4/1



(A₁)

1-PART SHALL BE AA-226-4 AS SUPPLIED BY CHRYSLER CORP, AMPLEX DIVISION, DETROIT, MICH., OR EQUAL. MODIFIED AS SHOWN.

REQD	PART NO.	DESCRIPTION	QTY	UNIT SPEC
LIST OF MATERIAL				

(A ₂)	SM-B-178861	SC-DL-248775	BEARING	SIGNAL CORPS ENGINEERING LABORATORIES PORT MONMOUTH NEW JERSEY SM-B-178862
	SM-C-178869			
	SM-B-178861	SC-DL-178467		
	NEXT ASSY	USED ON		
	APPLICATION			
UNLESS OTHERWISE SPECIFIED DIMENSIONS ARE IN INCHES TOLERANCES ON FRACTIONS DECIMALS ANGLES			AUTHENTICATION	
			DRAWN 21852-PH 50-99	
			TRACED PHOTO	
			CHECKED [Signature]	
			VERIFIED P.D.B.R.	
			APPROVED P.D.B.R.	
			REVIEWED P.M.E.	
			DATE 20 OCT 55	
			SCALE 2/1	