

EQUIP. TYPE *R390A/LFR* EXP. NO.

COL 5061954002

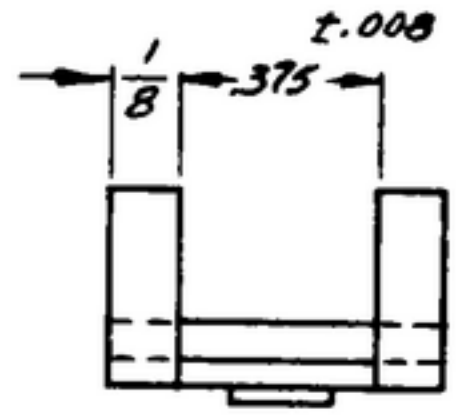
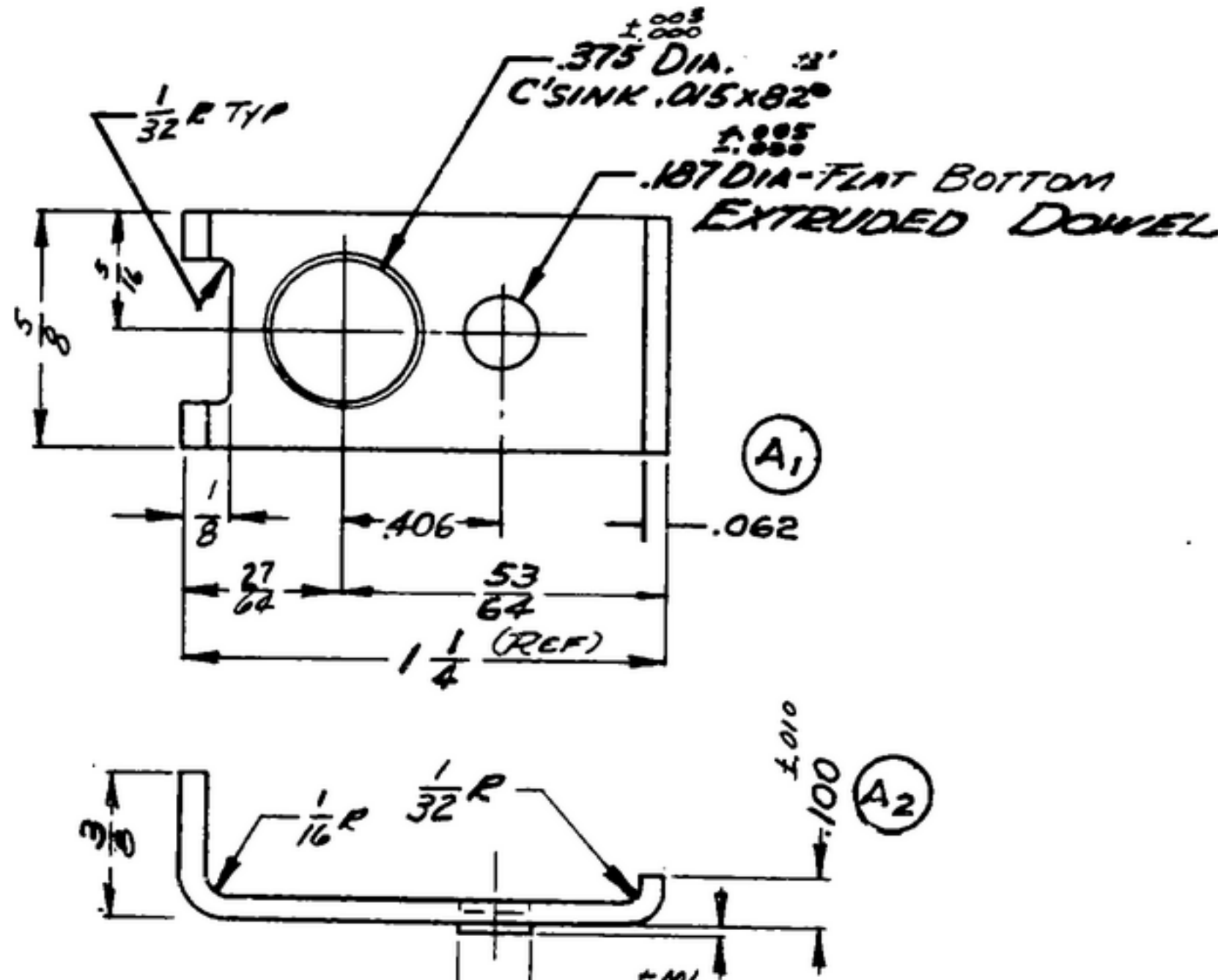
NOTICE: WHEN GOVERNMENT DRAWINGS, SPECIFICATIONS, OR OTHER DATA ARE USED FOR ANY PURPOSE OTHER THAN IN CONNECTION WITH A SPECIFICALLY RELATED GOVERNMENT PROCUREMENT OPERATION, THE UNITED STATES GOVERNMENT THEREBY INCURS NO RESPONSIBILITY FOR ANY OMISSION, WHATEVER, AND THE FACT THAT THE GOVERNMENT MAY HAVE FORMULATED, PROVIDED, OR IN ANY WAY SUPPLIED THE SAID DRAWINGS, SPECIFICATIONS, OR OTHER DATA IS NOT TO BE CONSIDERED AN IMPLICATION OR OTHERWISE AS IN ANY MANNER ENDORSING THE DESIGN OR ANY OTHER PORTION OR INFORMATION, OR CONFERRING ANY RIGHTS OR PERMISSION TO REPRODUCE, TRANSMIT, USE, OR SELL ANY PATENTED INVENTION THAT MAY IN ANY WAY BE RELATED THERETO.

THIS DOCUMENT HAS BEEN PURCHASED BY THE GOVERNMENT AND MAY BE REPRODUCED AND USED IN CONNECTION WITH ANY GOVERNMENT PROCUREMENT OR MAINTENANCE OPERATION.

*FOR INFORMATION ONLY. CONTRACTOR MAY AT HIS OPTION DEVIATE FROM THESE PROCESS DETAILS.

~~*SWE APPROVAL~~
SYM *FR10042-B*

REVISIONS			
SYM	DESCRIPTION	DATE	APPROVAL
<i>A₂</i>	<i>A₁-ADDED THK. DIM. TO VIEW; A₂-.100 WAS .125</i>	<i>27 OCT. 59</i>	<i>42428-PC-59-AI-51 REV'D PME</i>



*Q2E5, COMP 302, COND ANNEALED, DER SPEC.
MIL-5-5059, .062 THICK.*

COLLINS PART NO.	TYPE	REQD	PART NO.	DESCRIPTION	DATE	MATL SPEC
LIST OF MATERIAL						
COLLINS PART NO. <i>558-0159002</i>						

COLLINS NO.	QTY	NEXT ASSY	USED ON
<i>558-0159002</i>	<i>1</i>	<i>SM-B-248849</i>	<i>SC-DL-248775</i>

APPLICATION

DRAWN *RDG* CHECKED *Williams* APPROVED

UNLESS OTHERWISE SPECIFIED:
 DECIMAL DIMENSIONS INCLUDING HOLE SIZES MAY VARY ±.008
 FRACTIONAL DIMENSIONS INCLUDING HOLE SIZES MAY VARY ±1/64
 MACHINED ANGLES MAY VARY ±.1°
 SHEARED ANGLES MAY VARY ±.89°
 BROKEN ANGLES MAY VARY ±.1°
 ECCENTRICITY BETWEEN ANY DIAMETERS ON THE SAME CENTERLINE SHALL NOT EXCEED .010 TOTAL INDICATOR READING.
 ALL DIMENSIONS ARE FINISH DIMENSIONS INCLUDING APPLIED FINISH AND ARE GIVEN IN INCHES.

COLLINS RADIO CO.
 GEAR RAPID-100
1421A-PH-51-93

SIGNAL CORPS
 REVIEWED *PME*
 APPROVED *HLV PME*

DATE *6 Dec 1955* SCALE *2/1*

BRACKET-DIAL LOCK

DEPARTMENT OF THE ARMY
 SIGNAL CORPS ENGINEERING
 LABORATORIES
 FORT MONMOUTH NEW JERSEY
SM-B-248849