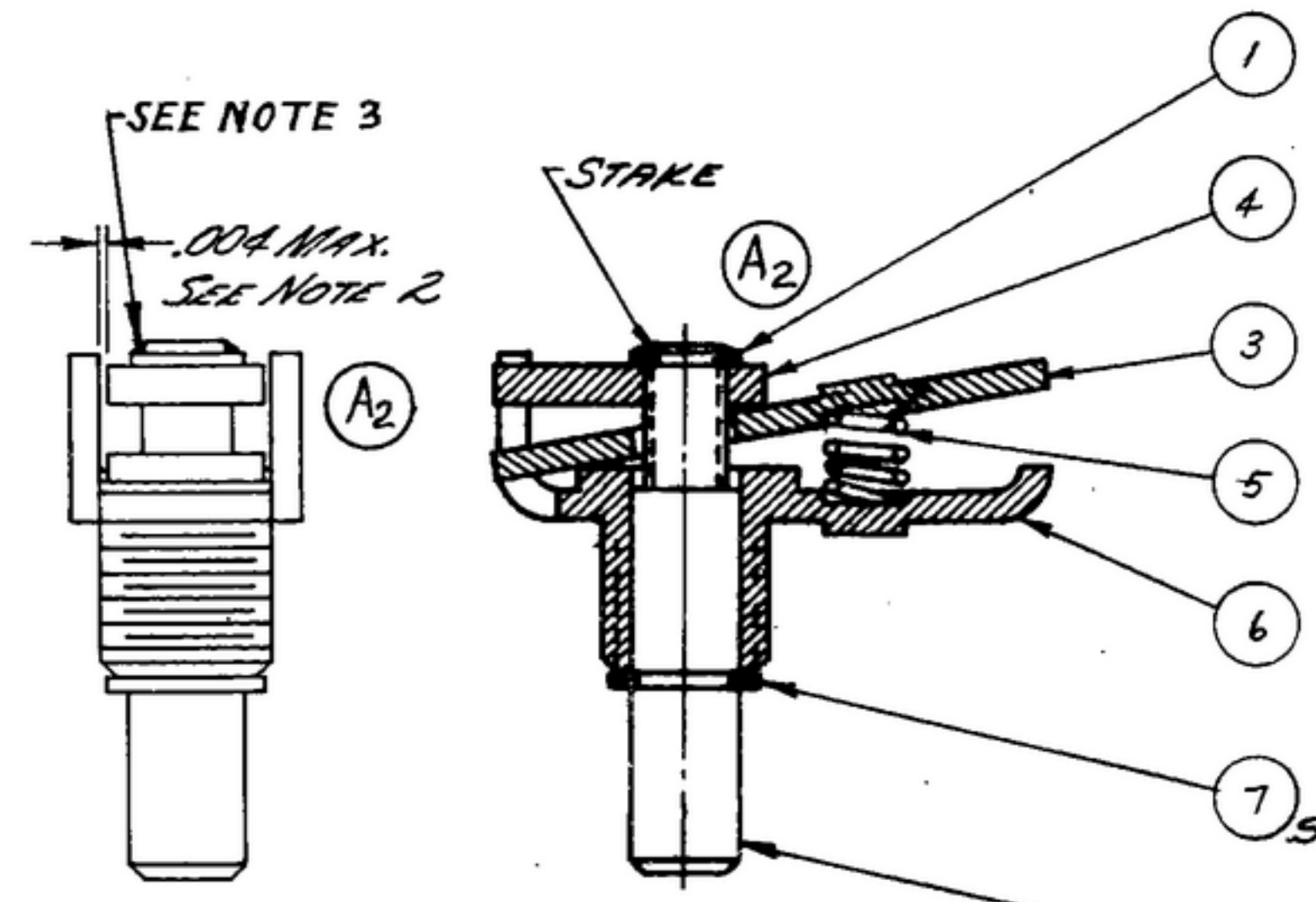


NOTICE: WHEN GOVERNMENT DRAWINGS, SPECIFICATIONS, OR OTHER DATA ARE USED FOR ANY PURPOSE OTHER THAN IN CONNECTION WITH A DEFINITELY RELATED GOVERNMENT PROCUREMENT OPERATION, THE UNITED STATES GOVERNMENT TAKES NO RESPONSIBILITY FOR ANY OMISSIONS, ERRORS, OR THE FACT THAT THE GOVERNMENT MAY HAVE INCURRED, PURSUING, OR IN ANY WAY SUPPLIED THE SAID DRAWINGS, SPECIFICATIONS, OR OTHER DATA IS NOT TO BE REGARDED BY REPLICATION OR OTHERWISE AS IN ANY MANNER LICENSES THE HOLDER OR ANY OTHER PERSON OR ORGANIZATION, OR CONFERS ANY RIGHTS OR PERMISSIONS TO MANUFACTURE, USE, OR SELL ANY PATENTED INVENTION THAT MAY IN ANY WAY BE RELATED THERETO.

THIS DOCUMENT HAS BEEN PURCHASED BY THE GOVERNMENT AND MAY BE REPRODUCED AND USED IN CONNECTION WITH ANY GOVERNMENT PROCUREMENT OR MAINTENANCE OPERATION.

* FOR INFORMATION ONLY. CONTRACTOR MAY AT HIS OPTION DEVIATE FROM THESE PROCESS DETAILS.

REVISIONS			
SYM	DESCRIPTION	DATE	APPROVAL
A2	(1) ADDED NOTE 3, ITEM 9; (2) ADDED SOLDER TO VIEW	22 MAR 1965	21582R-61 REV'D PNE



- NOTES:
1. APPLY TO THREADS OF SHAFT (2) SUFFICIENT AMOUNT OF GREASE (8) LOW TEMPERATURE, PER SPEC MIL-G-7421.
 2. PRESS SIDE IN TO DIMENSION SHOWN. NUT MUST WORK FREELY.
 - 3-BRAZE WASHER (ITEM 1) TO SHAFT (ITEM 2) USING ITEM 9.

COLLINS PART NO.	ITEM	REQD	PART NO.	DESCRIPTION	MATL	MATL SPEC	NOTES
	9	AS REQD	-2	SILVER SOLDER, CL 4		GQ-S-561	3
905 0353 00	8	2	SM-B-248851	GREASE			
558 0271 002	7	1	SM-B-248855	RING-RETAINER			1
558 0161 002	6	1	SM-B-248851	BUSHING ASSY			
558 0164 002	5	1	SM-B-248855	SPRING-DIAL LOCK			
558 0163 002	4	1	SM-B-248853	NUT-DIAL LOCK			
558 0158 002	3	1	SM-B-248848	PLATE-DIAL LOCK			
558 0157 002	2	1	SM-B-248847	SHAFT-DIAL LOCK			1
558 0059 002	1	1	SM-B-248829-2	WASHER			

LIST OF MATERIAL -COLLINS-PART-NO. 558-0162-002

DRAWN <i>Mml</i>				CHECKED <i>Rm</i>		APPROVED		-COLLINS-RADIO-CO.- CEDAR-RAPIDS, IOWA 14214-PH-51-93		DEPARTMENT OF THE ARMY SIGNAL CORPS ENGINEERING LABORATORIES FORT MONMOUTH NEW JERSEY SM-B-248852	
UNLESS OTHERWISE SPECIFIED: DECIMAL DIMENSIONS INCLUDING HOLE SIZES MAY VARY ±.008 FRACTIONAL DIMENSIONS INCLUDING HOLE SIZES MAY VARY ±1/64 MACHINED ANGLES MAY VARY ±1° SHEARED ANGLES MAY VARY ±.25° BROKEN ANGLES MAY VARY ±1° ECCENTRICITY BETWEEN ANY DIAMETERS ON THE SAME CENTERLINE SHALL NOT EXCEED .010 TOTAL INDICATOR READING. ALL DIMENSIONS ARE FINISH DIMENSIONS INCLUDING APPLIED FINISH AND ARE GIVEN IN INCHES.								SIGNAL CORPS			
558-0162-002 + SM-D-249134 SC-DL-149775								REVIEWED <i>PNE</i>			
COLLINS NO. QTY NEXT ASSY USED ON								APPROVED <i>HLV</i> <i>PNE</i>			
APPLICATION								DATE 6 DEC 55		SCALE 2/1	