

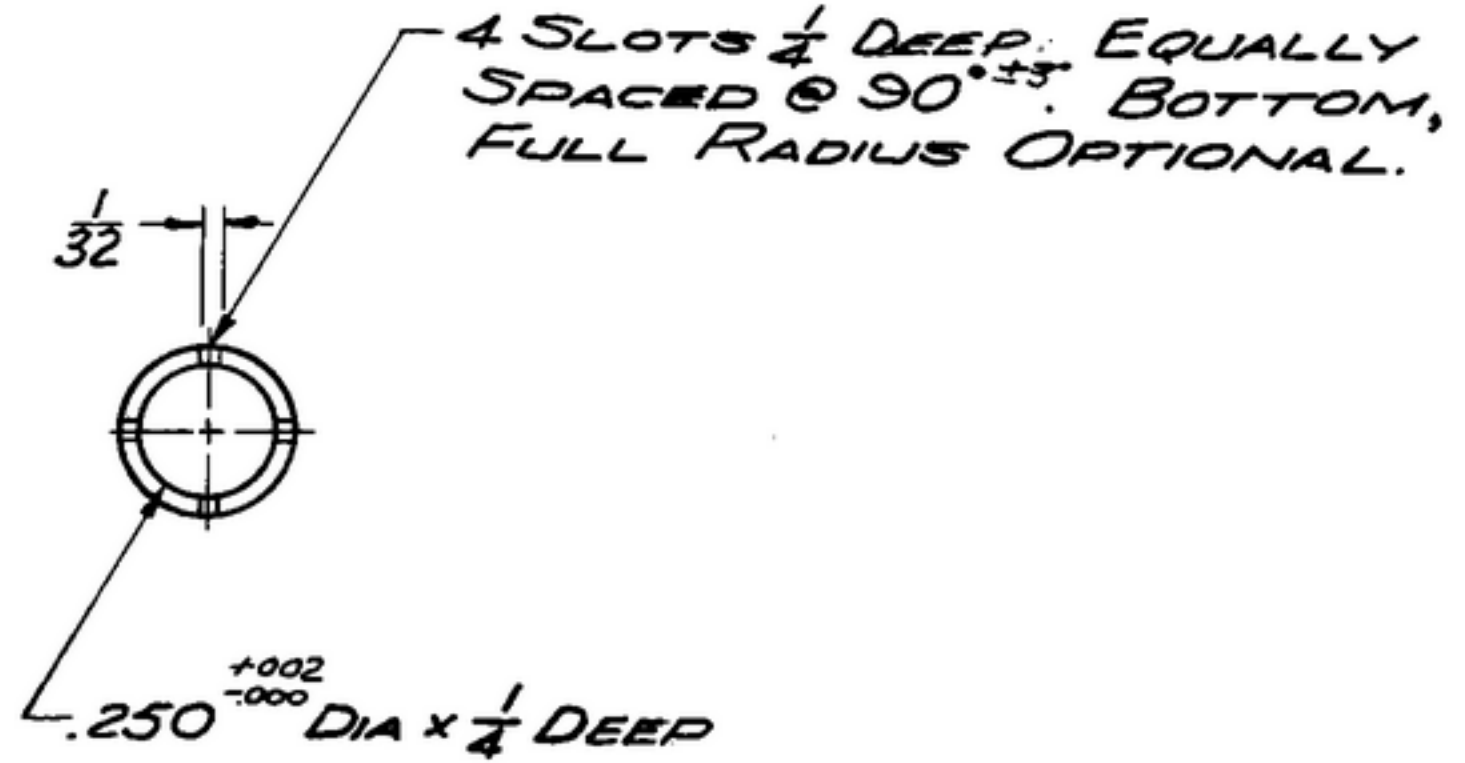
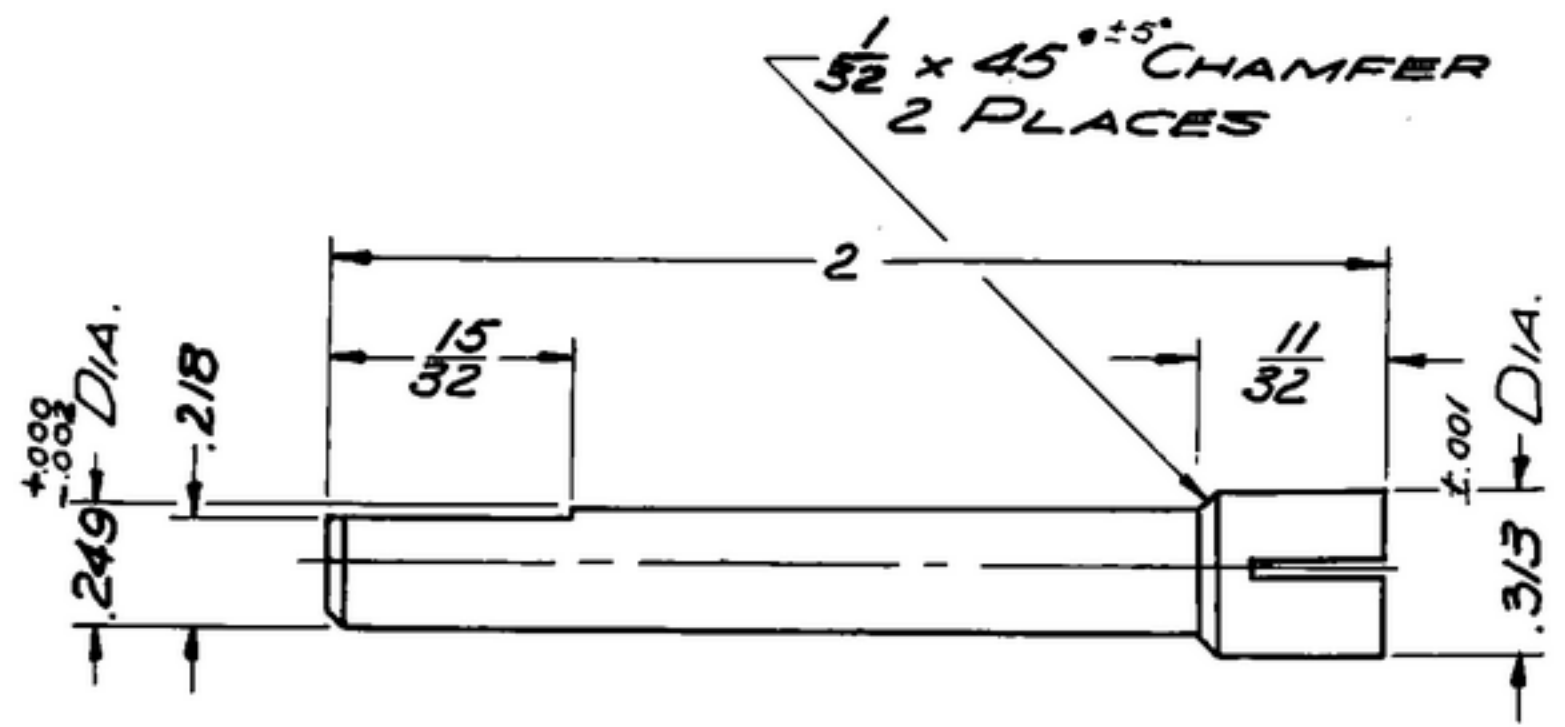
NOTICE: WHEN GOVERNMENT DRAWINGS, SPECIFICATIONS, OR OTHER DATA ARE USED FOR ANY PURPOSE OTHER THAN IN CONNECTION WITH A DEFINITELY RELATED GOVERNMENT PROCUREMENT OPERATION, THE UNITED STATES GOVERNMENT THEREBY INCURS NO RESPONSIBILITY FOR ANY OBLIGATION WHATSOEVER AND THE FACT THAT THE GOVERNMENT MAY HAVE FORMULATED, PROVIDED, OR IN ANY WAY SUPPLIED THE SAID DRAWINGS, SPECIFICATIONS, OR OTHER DATA IS NOT TO BE REGARDED BY IMPLICATION OR OTHERWISE AS IN ANY MANNER LICENSING THE HOLDER OR ANY OTHER PERSON OR CORPORATION, OR CONFERRING ANY RIGHTS OR PERMISSION TO MANUFACTURE, USE, OR SELL ANY PATENTED INVENTION THAT MAY IN ANY WAY BE RELATED THERETO.

THIS DOCUMENT HAS BEEN PURCHASED BY THE GOVERNMENT AND MAY BE REPRODUCED AND USED IN CONNECTION WITH ANY GOVERNMENT PROCUREMENT OR MAINTENANCE OPERATION.

* FOR INFORMATION ONLY. CONTRACTOR MAY AT HIS OPTION DEVIATE FROM THESE PROCESS DETAILS.

REVISIONS			
SYM	DESCRIPTION	DATE	APPROVAL
A₁	A₁ - ADDED NEW APPL SM-D-343619	27 JAN 60	42428-PC-59 REV'D
B₁	B₁ - COND, A WAS TYPE A, CLASS 303 WAS CLASS 7.	5 MAY 61	42428-PC-59 REV'D PME
C ₁	(1) REVISED MAT'L TO AGREE WITH REV B ABOVE	19 MAR 1965	215B2-PC 61 REV'D PME

~~* SWE APPROVAL
SYM PR 10042
A CA 84663
B1 CA~~



(C₁)
CRES, COND A, CLASS 303 PER SPEC QQ-S-763.

FINISH: E300 PER SPEC. MIL-F-14072.
* 600215 588 002 500.

- NOTES:
1. PART SHALL BE FREE OF BURRS AND SHARP EDGES.
2. CORNER RADII .020 MAX.

COLLINS PART NO.	ITEM	REQD	PART NO.	DESCRIPTION	MATL	MATL SPEC
LIST OF MATERIAL						
COLLINS PART NO. <u>558 0227 002</u>						

DRAWN R.D.E.				CHECKED <i>[Signature]</i>		APPROVED		COLLINS-RADIO CO. DESAR-RAPID-10WA 14214-PH-51-93		SHAFT-EXTENSION		DEPARTMENT OF THE ARMY SIGNAL CORPS ENGINEERING LABORATORIES FORT MONMOUTH NEW JERSEY SM-B-248878	
UNLESS OTHERWISE SPECIFIED: DECIMAL DIMENSIONS INCLUDING HOLE SIZES MAY VARY ±.005 FRACTIONAL DIMENSIONS INCLUDING HOLE SIZES MAY VARY ±1/64 MACHINED ANGLES MAY VARY ±.1° SHEARED ANGLES MAY VARY ±.25° BROKEN ANGLES MAY VARY ±.1° ECCENTRICITY BETWEEN ANY DIAMETERS ON THE SAME CENTERLINE SHALL NOT EXCEED .010 TOTAL INDICATOR READING. ALL DIMENSIONS ARE FINISH DIMENSIONS INCLUDING APPLIED FINISH AND ARE GIVEN IN INCHES.								SIGNAL CORPS					
558-0492-004								REVIEWED PME					
COLLINS-NO.				QTY		NEXT ASSY		USED ON		APPROVED HLY PME			
APPLICATION										DATE 28 SEPT 56		SCALE 2/1	