

EQUIP. TYPE *R390A/HRR* EXP. NO.

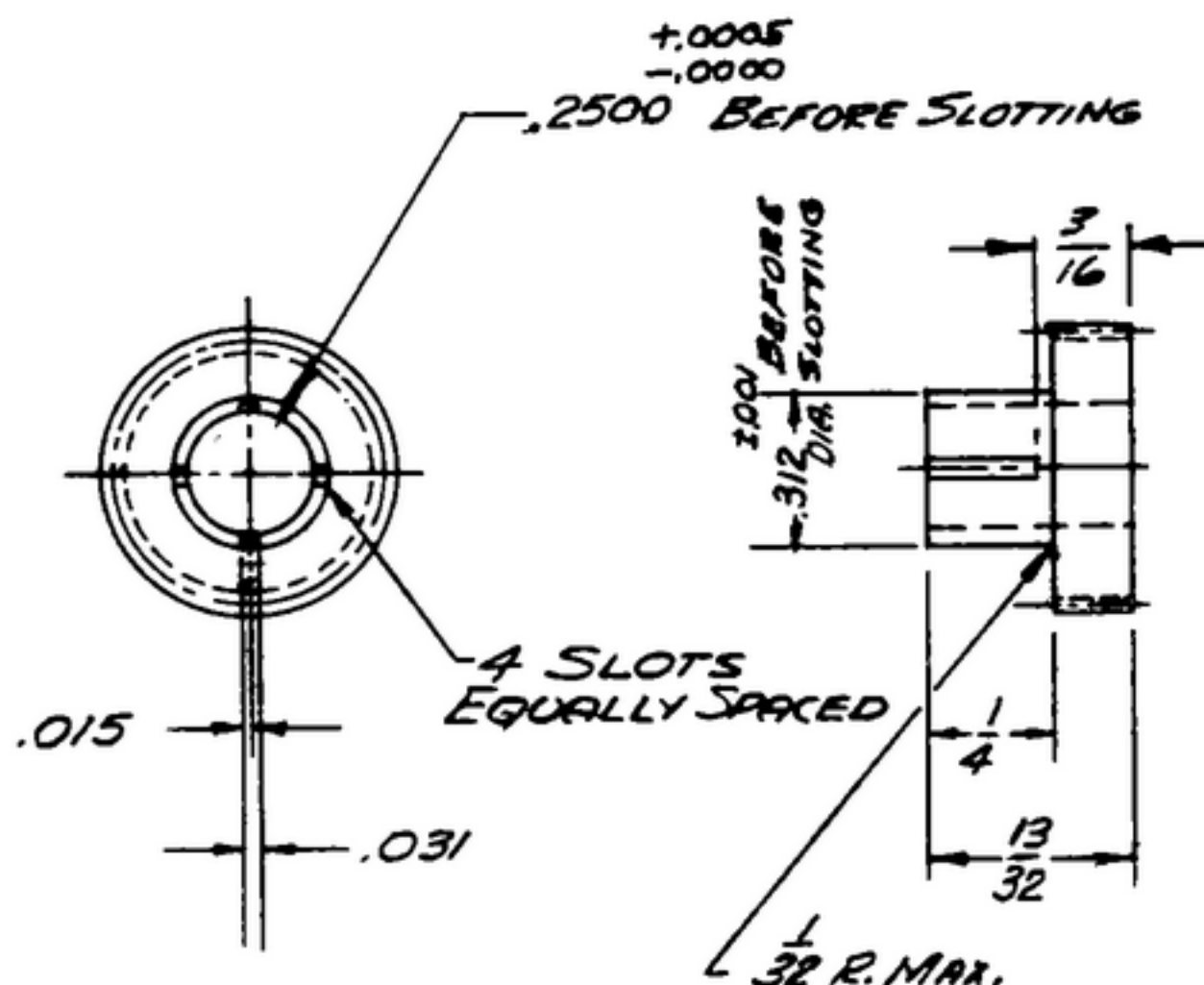
*COL 540 7475 002*

NOTICE: WHEN GOVERNMENT DRAWINGS, SPECIFICATIONS, OR OTHER DATA ARE USED FOR ANY PURPOSE OTHER THAN IN CONNECTION WITH A DEFINITELY RELATED GOVERNMENT PROCUREMENT OPERATION, THE UNITED STATES GOVERNMENT THEREBY INCURS NO RESPONSIBILITY NOR ANY OBLIGATION WHATSOEVER AND THE FACT THAT THE GOVERNMENT MAY HAVE FORMULATED, FURNISHED, OR IN ANY WAY SUPPLIED THE SAID DRAWINGS, SPECIFICATIONS, OR OTHER DATA IS NOT TO BE REGARDED BY REPLACEMENT OR OTHERWISE AS IN ANY MANNER LICENSES THE HOLDER OR ANY OTHER PERSON OR CORPORATION, OR CONFERS ANY RIGHTS OR PERMISSION TO MANUFACTURE, USE, OR SELL ANY PATENTED INVENTION THAT MAY IN ANY WAY BE RELATED THERETO.

THIS DOCUMENT HAS BEEN PURCHASED BY THE GOVERNMENT AND MAY BE REPRODUCED AND USED IN CONNECTION WITH ANY GOVERNMENT PROCUREMENT OR MAINTENANCE OPERATION.

\*FOR INFORMATION ONLY. CONTRACTOR MAY AT HIS OPTION DEVIATE FROM THESE PROCESS DETAILS.

| REVISIONS |             |      |          |
|-----------|-------------|------|----------|
| SYM       | DESCRIPTION | DATE | APPROVAL |



NOTES:

1. GEAR DATA:  
 NORMAL DIAMETRAL PITCH 32  
 NORMAL PRESSURE ANGLE 20°  
 NUMBER OF TEETH 17  
 THEORETICAL PITCH DIA. .53125

BACKLASH .000 TO .001 WHEN REFERRED TO THE THEORETICAL PITCH CIRCLE.  
 TOTAL COMPOSITE ERROR MUST NOT EXCEED .003 WHEN MEASURED WITH MASTER GEAR.  
 AMERICAN STD. INVOLUTE TOOTH FORM ALL TERMS USED AS DEFINED BY A.G.M.A. STDS

*CRES, COMP 3035, COND B, SURFACE COND d, PER SPEC MIL-5-7720.*

*FINISH: E300 PER SPEC MIL-F-14072*  
*\* COLLINS 580 002500*

| COLLINS PART NO. | ITEM | QTY | PART NO. | DESCRIPTION | MATL. | MATL. SPEC. |
|------------------|------|-----|----------|-------------|-------|-------------|
|------------------|------|-----|----------|-------------|-------|-------------|

LIST OF MATERIAL

*COLLINS PART NO. 558 0263 002*

|   |  |  |  |                      |  |                     |  |   |  |  |  |
|---|--|--|--|----------------------|--|---------------------|--|---|--|--|--|
| DRAWN<br><i>HENRY</i>   |  |  |  | CHECKED<br><i>Rh</i> |  | APPROVED            |  | COLLINS RADIO CO.<br>CEDAR RAPIDS, IOWA<br>14214-PH.<br>51-93 |  | DEPARTMENT OF THE ARMY<br>SIGNAL CORPS ENGINEERING<br>LABORATORIES<br>FORT MONMOUTH NEW JERSEY |  |
| UNLESS OTHERWISE SPECIFIED:<br>DECIMAL DIMENSIONS INCLUDING HOLE SIZES MAY VARY ±.003<br>FRACTIONAL DIMENSIONS INCLUDING HOLE SIZES MAY VARY ±1/64<br>MACHINED ANGLES MAY VARY ±1°<br>SWEARED ANGLES MAY VARY ±.25°<br>BROKEN ANGLES MAY VARY ±1°<br>ECCENTRICITY BETWEEN ANY DIAMETERS ON THE SAME CENTERLINE SHALL NOT EXCEED .010 TOTAL INDICATOR READING.<br>ALL DIMENSIONS ARE FINISH DIMENSIONS INCLUDING APPLIED FINISH AND ARE GIVEN IN INCHES. |  |  |  | SIGNAL CORPS         |  | REVIEWED <i>PME</i> |  | APPROVED <i>HLV</i><br><i>PME</i>                             |  |  |  |
| 558-0324004 + SM-D-248915 S-R-248775  |  |  |  | NEXT ASSY            |  | USED ON             |  | DATE <i>9 Dec 55</i>  |  | SCALE <i>2/1</i>   |  |
| APPLICATION   |  |  |  |                      |  |                     |  |   |  |  |  |