

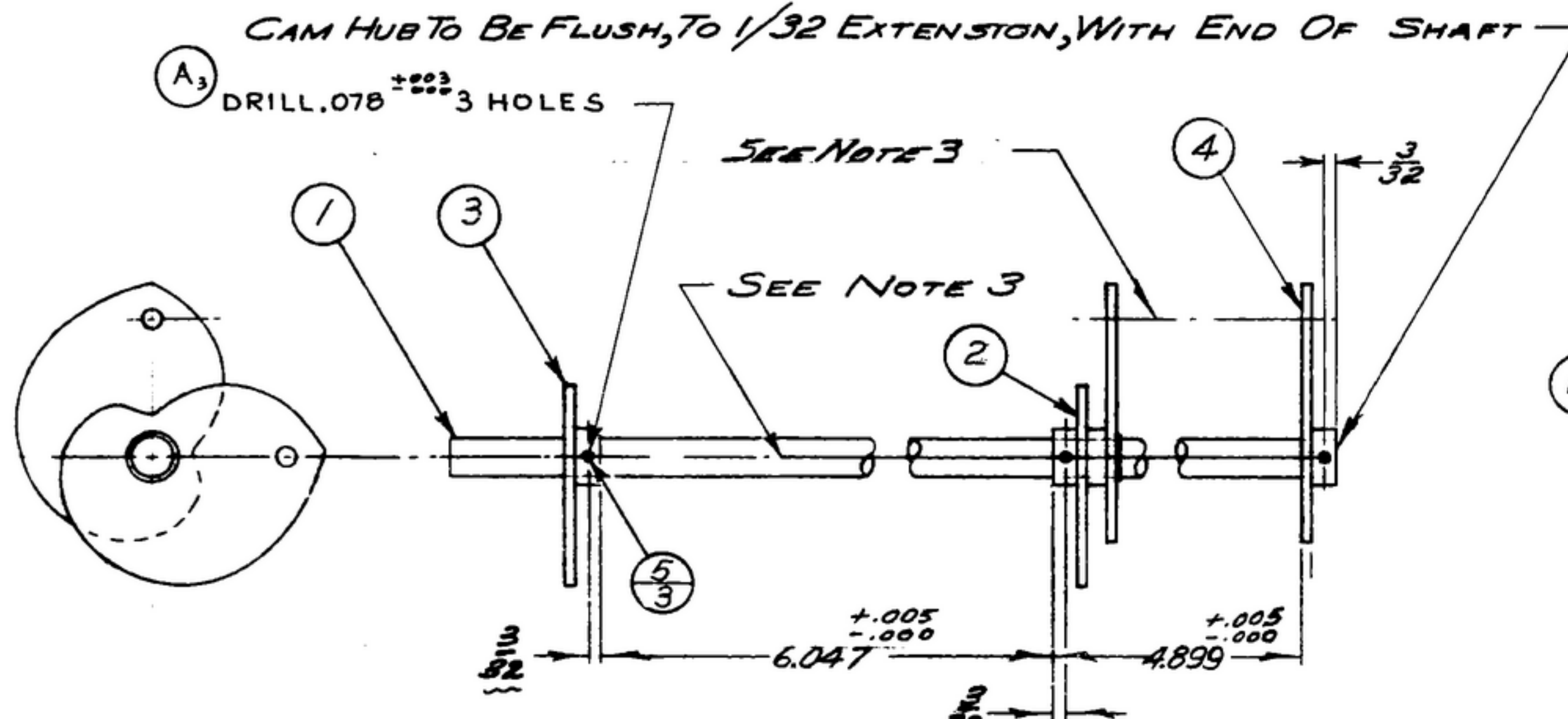
NOTICE: WHEN GOVERNMENT DRAWINGS, SPECIFICATIONS, OR OTHER DATA ARE USED FOR ANY PURPOSE OTHER THAN IN CONNECTION WITH A DEFINITELY RELATED GOVERNMENT PURCHASE OPERATION, THE UNITED STATES GOVERNMENT THEREBY ASSUMES NO RESPONSIBILITY FOR ANY OBLIGATION WHATSOEVER AND THE FACT THAT THE GOVERNMENT MAY HAVE FORMULATED, PROVIDED, OR IN ANY WAY SUPPLIED THE SAID DRAWINGS, SPECIFICATIONS, OR OTHER DATA IS NOT TO BE REGARDED BY REPLICATORS OR OTHERWISE AS IN ANY MANNER ENDORSING THE HOLDER OR ANY OTHER PERSON OR ORGANIZATION, OR CONFERRING ANY RIGHTS OR PERMISSION TO MANUFACTURE, USE, OR SELL ANY PATENTED INVENTION THAT MAY IN ANY WAY BE RELATED THERETO.

THIS DOCUMENT HAS BEEN PURCHASED BY THE GOVERNMENT AND MAY BE REPRODUCED AND USED IN CONNECTION WITH ANY GOVERNMENT PURCHASE OR MAINTENANCE OPERATION.

\* FOR INFORMATION ONLY. CONTRACTOR MAY AT HIS OPTION DEVIATE FROM THESE PROCESS DETAILS.

~~X SWE APPROVAL~~  
~~SYM PR 10042-5~~

REVISIONS			
SYM	DESCRIPTION	DATE	APPROVAL
A <sub>4</sub>	A <sub>1</sub> ADDED APPL SM-D-343600 A <sub>2</sub> ITEM 5 WAS 105-25-603 A <sub>3</sub> WAS DRILL & REAM FOR NO. 6/0 TAPER PIN A <sub>4</sub> WAS TAPER PIN	9 OCT 59	42428-PC 59-AI-51 REV'D PME



- NOTES:
- 1: POSITION CAM ASSY ON SHAFT AS SHOWN.
  - 2: ASSEMBLE PIN (5) RIGID IN HUB (3) ONLY
  - 3: CAMS MUST BE ALIGNED WITHIN 0°30'.
  - 4: IN ALL SPLIT BALLOONS TOP FIGURE IS MATERIAL LIST ITEM INDICATOR & BOTTOM FIGURE IS QUANTITY.

COLLINS PART NO.	ITEM	REQD	PART NO.	DESCRIPTION	MATL	MATL SPEC
<del>311600300</del>	5	3	MS171464	PIN SPRING		
<del>5580321003</del>	4	1	SM-C-248972	CAM ASSY-R.F.		
<del>5580320003</del>	3	1	SM-C-248971	CAM ASSY-R.F.		
<del>SA 5580802002</del>	2	1	SM-B-248953	CAM ASSY-R.F.		
<del>5580270002</del>	1	1	SM-B-248921	SHAFT-CAM		

LIST OF MATERIAL COLLINS PART NO. 558 0305 002

COLLINS NO.	QTY	NEXT ASSY	USED ON
SM-D-343600	1		
558 0324 004	1	SM-D-248975	SC-DL-248775

APPLICATION

DRAWN: NUGEN  
CHECKED: Williams  
APPROVED: [Signature]

UNLESS OTHERWISE SPECIFIED:  
DECIMAL DIMENSIONS INCLUDING HOLE SIZES MAY VARY ±.004  
FRACTIONAL DIMENSIONS INCLUDING HOLE SIZES MAY VARY ±1/64  
MACHINED ANGLES MAY VARY ±.1°  
SHEARED ANGLES MAY VARY ±.25°  
BROKEN ANGLES MAY VARY ±.1°  
ECCENTRICITY BETWEEN ANY DIAMETERS ON THE SAME CENTERLINE SHALL NOT EXCEED .010 TOTAL INDICATOR READING.  
ALL DIMENSIONS ARE FINISH DIMENSIONS INCLUDING APPLIED FINISH AND ARE GIVEN IN INCHES.

COLLINS RADIO CO.  
GEAR RAPIDS, IOWA  
14214-PH-51-93  
SIGNAL CORPS  
REVIEWED: PME  
APPROVED: HLY, PME  
DATE: 20 DEC 55  
SCALE: 1/1

DEPARTMENT OF THE ARMY  
SIGNAL CORPS ENGINEERING LABORATORIES  
FORT MONMOUTH NEW JERSEY  
SM-B-248956