

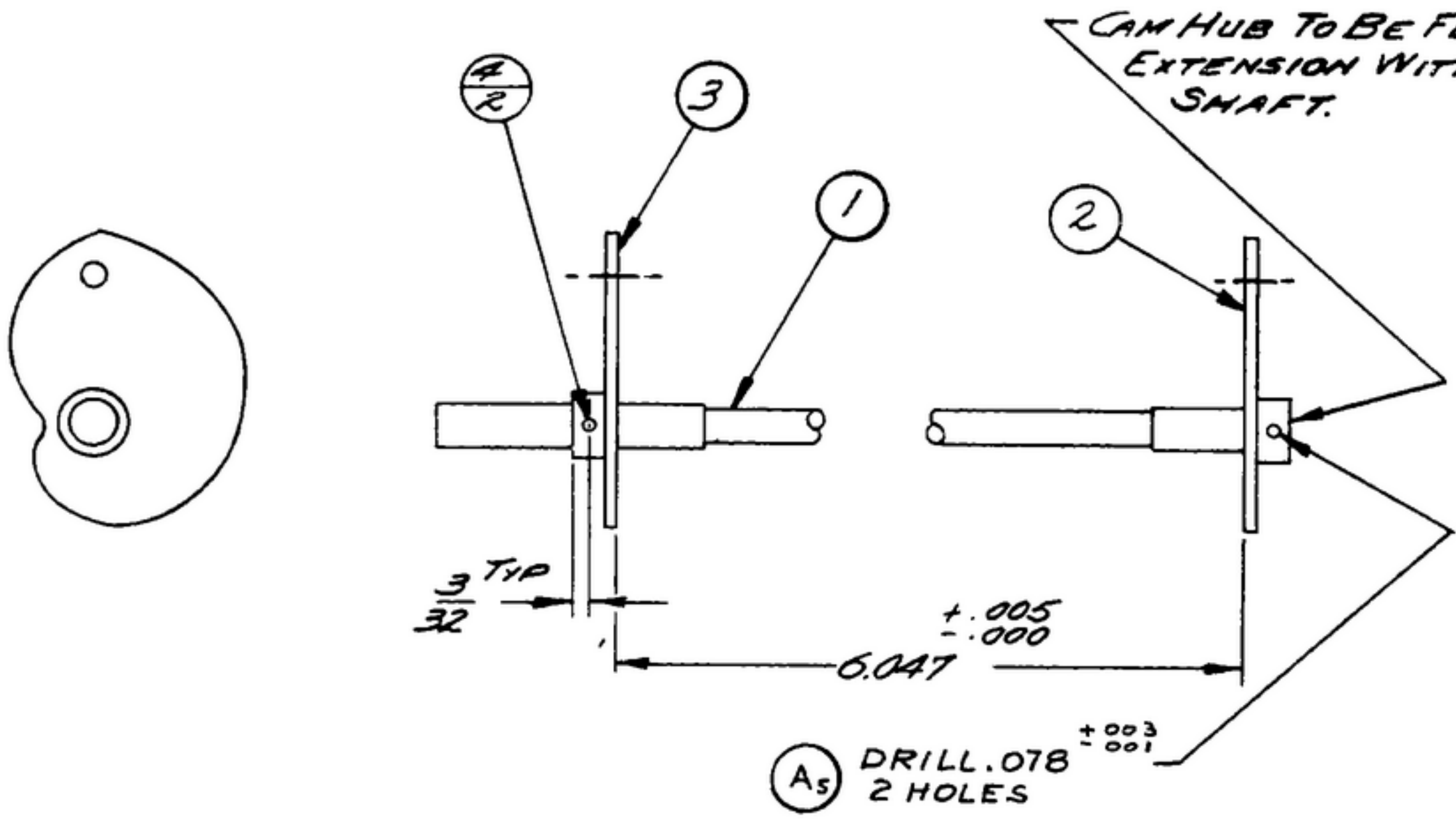
NOTICE: WHEN GOVERNMENT DRAWINGS, SPECIFICATIONS, OR OTHER DATA ARE USED FOR ANY PURPOSE OTHER THAN IN CONNECTION WITH A DEFINITELY RELATED GOVERNMENT PROCUREMENT OPERATION, THE UNITED STATES GOVERNMENT THEREBY INCURS NO RESPONSIBILITY FOR ANY OBLIGATION WHATSOEVER, AND THE FACT THAT THE GOVERNMENT MAY HAVE FORMULATED, FURNISHED, OR IN ANY WAY SUPPLIED THE SAID DRAWINGS, SPECIFICATIONS, OR OTHER DATA IS NOT TO BE REGARDED BY IMPLICATION OR OTHERWISE AS IN ANY MANNER LICENSING THE HOLDER OR ANY OTHER PERSON OR CORPORATION, OR CONVEYING ANY RIGHTS OR PERMISSIONS TO MANUFACTURE, USE, OR SELL ANY PATENTED INVENTION THAT MAY IN ANY WAY BE RELATED THERETO.

THIS DOCUMENT HAS BEEN PURCHASED BY THE GOVERNMENT AND MAY BE REPRODUCED AND USED IN CONNECTION WITH ANY GOVERNMENT PROCUREMENT OR MAINTENANCE OPERATION.

* FOR INFORMATION ONLY, CONTRACTOR MAY AT HIS OPTION DEVIATE FROM THESE PROCESS DETAILS.

~~X SWE APPROVAL~~
~~SYM PR10042 E~~

REVISIONS			
SYM	DESCRIPTION	DATE	APPROVAL
A ₁	A ₁ DWG SIZE "B" WAS "E" A ₂ CORRECTED SPELLING A ₃ ADDED APPL SM-D-343600 A ₄ ITEM 4 WAS 105-25-603 A ₅ WAS DRILL & REAM FOR NO. 6/0 TAPER PIN	9 OCT 59	42428-PC 59-AI-51 REV'D PME



NOTES:
1. POSITION CAM ASSYS ON SHAFT AS SHOWN.
2. ASSEMBLE PIN (4) RIGID IN HUB (3) ONLY.
3. CAMS MUST BE ALIGNED WITHIN 0°30'
4. IN ALL SPLIT BALLOONS TOP FIGURE IS MATERIAL LIST ITEM INDICATOR & BOTTOM FIGURE IS QUANTITY

COLLINS PART NO.	ITEM	REQD	PART NO.	DESCRIPTION	MATL	MATL Q'Y
511600300	4	2	MS 171464	PIN-SPRING		
5580321003	3	1	SM-C-248972	CAM ASSY-R.F.		
5580320003	2	L	SM-C-248971	CAM ASSY-R.F.		
5580269002	1	1	SM-B-248920	SHAFT-CAM		

LIST OF MATERIAL - COLLINS PART NO. 558-0306-002

COLLINS NO.	QTY	NEXT ASSY	USED ON
558-0324-004	1	SM-D-248975	SM-D-248975

DRAWN *HENRY* CHECKED *Alm* APPROVED _____

UNLESS OTHERWISE SPECIFIED:
DECIMAL DIMENSIONS INCLUDING HOLE SIZES MAY VARY ±.008
FRACTIONAL DIMENSIONS INCLUDING HOLE SIZES MAY VARY ±1/64
MACHINED ANGLES MAY VARY ±.1°
SHEARED ANGLES MAY VARY ±.25°
BROKEN ANGLES MAY VARY ±.1°
ECCENTRICITY BETWEEN ANY DIAMETERS ON THE SAME CENTERLINE SHALL NOT EXCEED .010 TOTAL INDICATOR READING.
ALL DIMENSIONS ARE FINISH DIMENSIONS INCLUDING APPLIED FINISH AND ARE GIVEN IN INCHES.

COLLINS-RADIO CO.
OSCAR-RAPID-1002
14214 - P.H.
51-93

SIGNAL CORPS

REVIEWED *PME*

APPROVED *ALY*
PME

DATE *19 DEC 55* SCALE *1/1*

DEPARTMENT OF THE ARMY
SIGNAL CORPS ENGINEERING
LABORATORIES

FORT MONMOUTH NEW JERSEY

SM-B-248957