

DT-5

EQUIP. TYPE R390A/URR EXP. NO.

COL. 540 7613 002

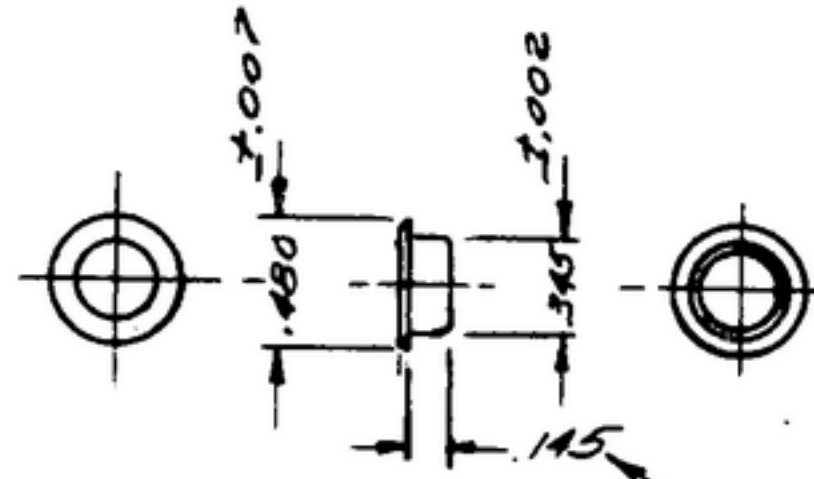
NOTICE: WHEN GOVERNMENT DRAWINGS, SPECIFICATIONS, OR OTHER DATA ARE USED FOR ANY PURPOSE OTHER THAN IN CONNECTION WITH A DEFINITELY RELATED GOVERNMENT PROCUREMENT OPERATION, THE UNITED STATES GOVERNMENT THEREBY INCURS NO RESPONSIBILITY FOR ANY OBLIGATION WHATSOEVER; AND THE FACT THAT THE GOVERNMENT MAY HAVE FORMULATED, FURNISHED, OR IN ANY WAY SUPPLIED THE SAID DRAWINGS, SPECIFICATIONS, OR OTHER DATA IS NOT TO BE REGARDED BY IMPLICATION OR OTHERWISE AS IN ANY MANNER LICENSING THE HOLDER OR ANY OTHER PERSON OR CORPORATION, OR CONVEYING ANY RIGHTS OR PERMISSIONS TO MANUFACTURE, USE, OR SELL ANY PATENTED INVENTION THAT MAY IN ANY WAY BE RELATED THERETO.

THIS DOCUMENT HAS BEEN PURCHASED BY THE GOVERNMENT AND MAY BE REPRODUCED AND USED IN CONNECTION WITH ANY GOVERNMENT PROCUREMENT OR MAINTENANCE OPERATION.

* FOR INFORMATION ONLY. CONTRACTOR MAY AT HIS OPTION DEVIATE FROM THESE PROCESS DETAILS.

~~X SWE APPROVAL~~
~~SYM PR10042-8~~

REVISIONS			
SYM	DESCRIPTION	DATE	APPROVAL
A ₂	A. DELETED TYPE I CLASS B PER SPEC QQ-P-416" FROM FINISH A ₂ REMOVED "EYELET" FROM LIST OF MATERIAL	27 OCT 59	42425-PC 59-A1-S1 REV'D PME



See Note 2

NOTES

1. PART MAY BE NO. 491 AS SUPPLIED BY AMERICAN BRASS CO., WATERBURY, CONN., OR EQUAL, PROVIDING IT MEETS THE FOLLOWING REQUIREMENTS AND DIMENSIONS SHOWN. MODIFIED AS INDICATED IN FINISH CALLOUT.

2. DIMENSIONS SHOWN ARE REFERENCE DIMENSIONS.

MATERIAL: BRASS

(A₁) FINISH: M262 PER SPEC MIL-F-14072

(A₂)

LIST OF MATERIAL

COLLINS PART NO. 558 0436 002

DRAWN NUGEN				CHECKED <i>flm</i>	APPROVED	COLLINS RADIO CO. 4200 W. 12TH ST. DENVER, CO. 80202 14214-PH-51-93	EYELET-SPECIAL	DEPARTMENT OF THE ARMY SIGNAL CORPS ENGINEERING LABORATORIES
UNLESS OTHERWISE SPECIFIED: DECIMAL DIMENSIONS INCLUDING HOLE SIZES MAY VARY ±.005 FRACTIONAL DIMENSIONS INCLUDING HOLE SIZES MAY VARY ±1/64 MACHINED ANGLES MAY VARY ±.1° SHEARED ANGLES MAY VARY ±.25° BROKEN ANGLES MAY VARY ±.1° ECCENTRICITY BETWEEN ANY DIAMETERS ON THE SAME CENTERLINE SHALL NOT EXCEED .010 TOTAL INDICATOR READING. ALL DIMENSIONS ARE FINISH DIMENSIONS INCLUDING APPLIED FINISH AND ARE GIVEN IN INCHES.				SIGNAL CORPS		REVIEWED <i>PME</i>		FORT MONMOUTH NEW JERSEY
558 0436 004 - 1 SM-D-249085 SE-D-248775				APPROVED <i>HLV</i> <i>PME</i>				DATE 24 FEB 56 SCALE <i>1/1</i>
COLLINS NO.	QTY	NEXT ASSY	USED ON	APPLICATION				