

EQUIP. TYPE *R300A/LRR* EQ. NO.

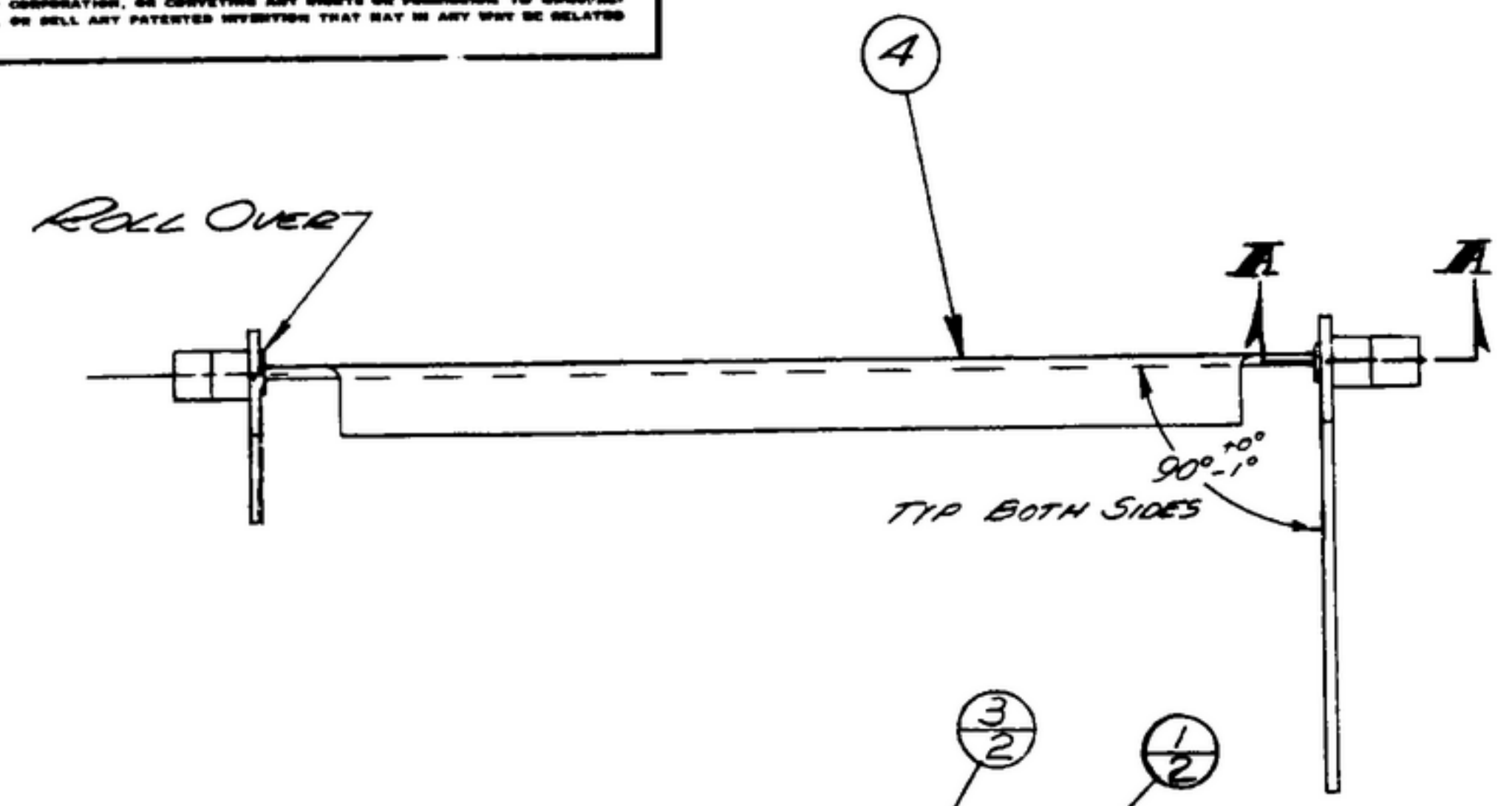
*COL. 540 7863 002*

NOTICE: WHEN GOVERNMENT DRAWINGS, SPECIFICATIONS, OR OTHER DATA ARE USED FOR ANY PURPOSE OTHER THAN IN CONNECTION WITH A SPECIFICALLY RELATED GOVERNMENT PROCUREMENT OPERATION, THE UNITED STATES GOVERNMENT THEREBY INCURS NO RESPONSIBILITY FOR ANY SOLIDATION WHATSOEVER AND THE FACT THAT THE GOVERNMENT MAY HAVE FORMULATED, FURNISHED, OR IN ANY WAY SUPPLIED THE SAID DRAWINGS, SPECIFICATIONS, OR OTHER DATA IS NOT TO BE REGARDED BY REPLICATION OR OTHERWISE AS IN ANY MANNER LICENSING THE HOLDER OR ANY OTHER PERSON OR CORPORATION, OR CONFERRING ANY RIGHTS OR PERMISSION TO MANUFACTURE, USE, OR SELL ANY PATENTED INVENTION THAT MAY IN ANY WAY BE RELATED THERETO.

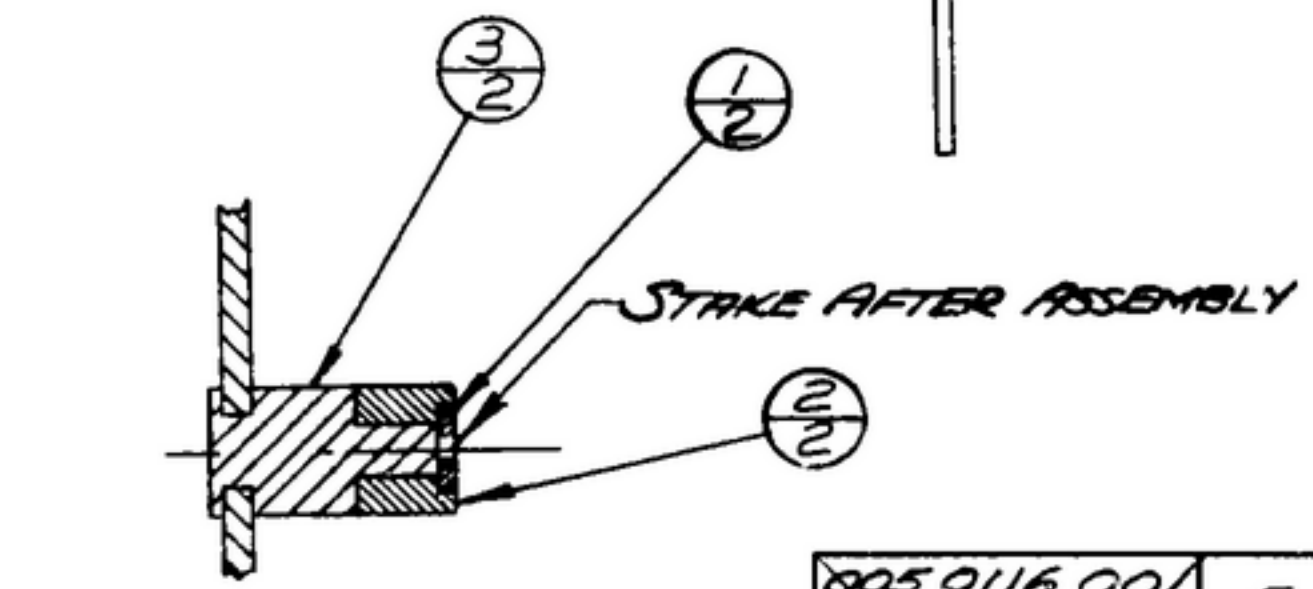
THIS DOCUMENT HAS BEEN PURCHASED BY THE GOVERNMENT AND MAY BE REPRODUCED AND USED IN CONNECTION WITH ANY GOVERNMENT PROCUREMENT OR MAINTENANCE OPERATION.

\* FOR INFORMATION ONLY. CONTRACTOR MAY AT HIS OPTION DEVIATE FROM THESE PROCESS DETAILS.

REVISIONS			
SYM	DESCRIPTION	DATE	APPROVAL



- NOTES:
1. ROLLER (2) MUST ROTATE FREELY AFTER STAKING.
  2. ROLLER BORE TO BE LUBRICATED WITH OIL (3) PER SPEC MIL-L-7870 BEFORE ASSY.
  3. IN ALL SPLIT BALLOONS TOP FIGURE IS MATERIAL LIST ITEM INDICATOR & BOTTOM FIGURE IS QUANTITY.



SECTION A-A  
SCALE 2/1

COLLINS PART NO.	ITEM	REQD	PART NO.	DESCRIPTION	MATL	MATL SPEC
<del>805 0116 001</del>	5	As Reqd		OIL		
558 0398 003	4	1	SM-C-249047	RACK-HIGH		
558 0479 002	3	2	SM-B-178744	SHAFT		
558 0180 002	2	2	SM-B-178739	ROLLER		
558 0086 802	1	2	SM-B-170822	WASHER		

LIST OF MATERIAL COLLINS PART NO. ~~558 0468 002~~

DRAWN <i>JENNETT</i>				CHECKED <i>Rhm</i>		APPROVED		COLLINS-RADIO-CO. -CEDAR RAPIDS-IOWA <i>1A142-PH</i> <i>51-03</i>		DEPARTMENT OF THE ARMY SIGNAL CORPS ENGINEERING LABORATORIES FORT MONMOUTH NEW JERSEY	
UNLESS OTHERWISE SPECIFIED: DECIMAL DIMENSIONS INCLUDING HOLE SIZES MAY VARY ±.008 FRACTIONAL DIMENSIONS INCLUDING HOLE SIZES MAY VARY ±1/64 MACHINED ANGLES MAY VARY ±.1° SHEARED ANGLES MAY VARY ±.25° BROKEN ANGLES MAY VARY ±.1° ECCENTRICITY BETWEEN ANY DIAMETERS ON THE SAME CENTERLINE SHALL NOT EXCEED .010 TOTAL INDICATOR READING. ALL DIMENSIONS ARE FINISH DIMENSIONS INCLUDING APPLIED FINISH AND ARE GIVEN IN INCHES.				REVIEWED <i>PME</i>		APPROVED <i>HLV</i> <i>PME</i>		SIGNAL CORPS			
558 0453 004 3 SM-D-24885A SC-DL-248775								DATE <i>15 Dec 55</i>		SCALE <i>1/1</i>	
APPLICATION										SM-B-249058	