

GROUP TYPE *R390A/URP* EXP. NO.

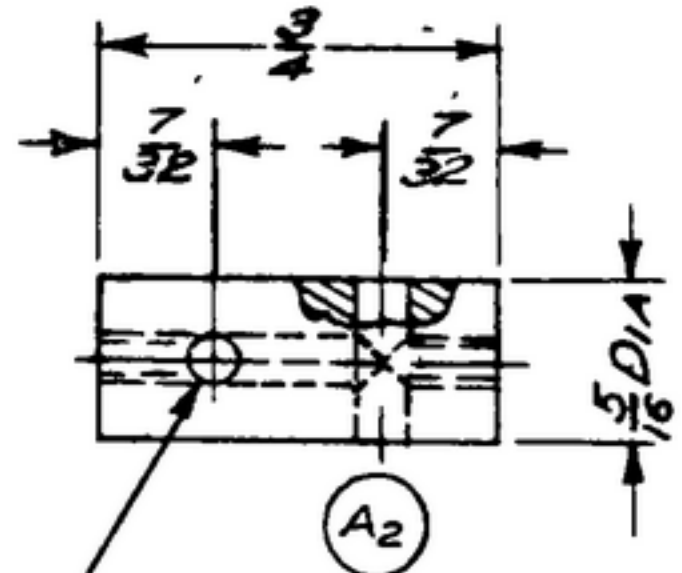
*COL 541 8153 002*

NOTICE: WHEN GOVERNMENT DRAWINGS, SPECIFICATIONS, OR OTHER DATA ARE USED FOR ANY PURPOSE OTHER THAN IN CONNECTION WITH A DEFINITELY RELATED GOVERNMENT PROCUREMENT OPERATION, THE UNITED STATES GOVERNMENT THEREBY INCURS NO LIABILITY FOR ANY DELAY OR DAMAGE WHATSOEVER, AND THE FACT THAT THE GOVERNMENT MAY HAVE FORMULATED, FURNISHED, OR IN ANY WAY SUPPLIED THE SAID DRAWINGS, SPECIFICATIONS, OR OTHER DATA IS NOT TO BE REGARDED BY REPLICATION OR OTHERWISE AS IN ANY MANNER LIMITING THE HOLDER OR ANY OTHER PERSON OR ORGANIZATION, OR IMPLYING ANY RIGHTS OR PERMISSION TO MANUFACTURE, USE, OR SELL ANY PATENTED INVENTION THAT MAY IN ANY WAY BE RELATED THERETO.

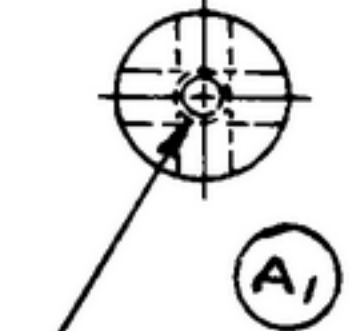
THIS DOCUMENT HAS BEEN PURCHASED BY THE GOVERNMENT AND MAY BE REPRODUCED AND USED IN CONNECTION WITH ANY GOVERNMENT PROCUREMENT OR MANUFACTURE OPERATION.

\*FOR INFORMATION ONLY. CONTRACTOR MAY AT HIS OPTION DEVIATE FROM THESE PROCESS DETAILS.

REVISIONS			
SYM	DESCRIPTION	DATE	APPROVAL
<del>A<sub>2</sub></del>	<del>A<sub>1</sub> - ADDED .089 DRILL THRU; A<sub>2</sub> - CORRECTED VIEW OF PART TO AGREE WITH A<sub>1</sub> REVISION.</del>	<del>4 NOV. 59</del>	<del>42428-PC-59 REV'D. PME</del>
B <sub>1</sub>	B <sub>1</sub> - MATERIAL WAS: PLASTIC TYPE PBE PER SPEC. MIL-P-3115.	23 FEB. 60	42428-PC-59 REV'D. PME



.094 DIA 2 HOLES AT 90° ± 5°



.089 DRILL THRU  
4-40 NC-2B X  
7/32 ± 1/64 DEEP  
BOTH ENDS

MATERIAL: PLASTIC TYPE PBE FORM R (B<sub>1</sub>)  
PER SPEC. MIL-P. 79.

NOTES:  
1. ALL SCREW THREADS PER BUREAU OF STANDARDS HANDBOOK H28.

COLLINS PART NO.	ITEM	QTY	PART NO.	DESCRIPTION	MATL	MATL SPEC.
LIST OF MATERIAL						

COLLINS PART NO. *558 0545 002*

DRAWN <i>NUGEN</i>			CHECKED <i>[Signature]</i>	APPROVED	COLLINS RADIO CO. 14214-PH-51-93	<b>SPACER</b>	DEPARTMENT OF THE ARMY SIGNAL CORPS ENGINEERING LABORATORIES  FORT MONMOUTH NEW JERSEY
UNLESS OTHERWISE SPECIFIED: DECIMAL DIMENSIONS INCLUDING HOLE SIZES MAY VARY ±.008 FRACTIONAL DIMENSIONS INCLUDING HOLE SIZES MAY VARY ±1/64 MACHINED ANGLES MAY VARY ±.1° SHEARED ANGLES MAY VARY ±.25° BROKEN ANGLES MAY VARY ±1° ECCENTRICITY BETWEEN ANY DIAMETERS ON THE SAME CENTERLINE SHALL NOT EXCEED .010 TOTAL INDICATOR READING. ALL DIMENSIONS ARE FINISH DIMENSIONS INCLUDING APPLIED FINISH AND ARE GIVEN IN INCHES.				REVIEWED <i>PME</i>			
558-0545-002 2 SMD-249100SG-N-249775				APPROVED <i>HLV</i> <i>PME</i>			
COLLINS NO.	QTY	NEXT ASSY	USED ON	DATE <i>29 MAR 56</i>	SCALE <i>2/1</i>		

*SM-B-249189*

WHEN REFERRING TO THIS DRAWING STATE DRAWING NO., APPLICABLE ISSUE SYMBOL, IF ANY, AND DATE