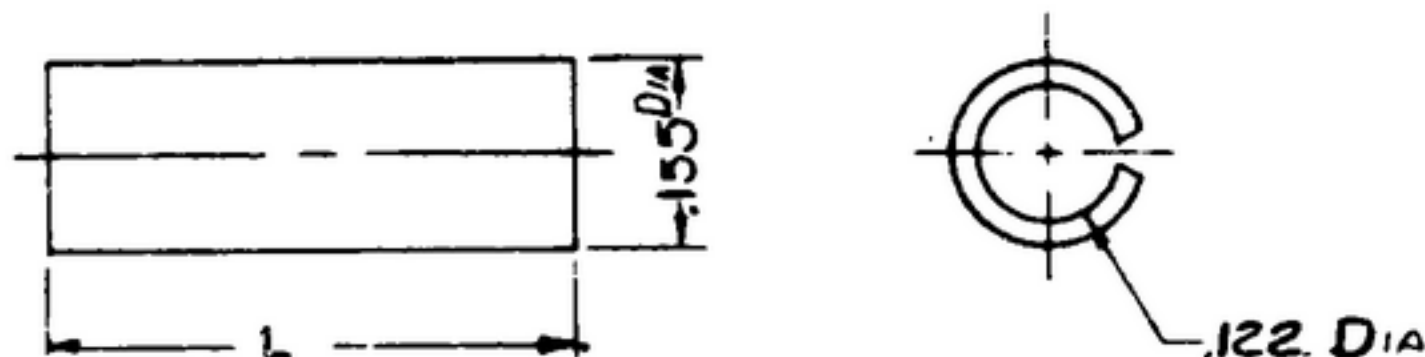


NOTES: WHEN GOVERNMENT DRAWINGS, SPECIFICATIONS, OR OTHER DATA ARE USED FOR ANY PURPOSE OTHER THAN IN CONNECTION WITH A GOVERNMENT RELATED SERVICE OR CONTRACT OPERATION, THE UNITED STATES GOVERNMENT THEREBY INCURS NO LIABILITY FOR ANY DEFICIENCY WHATSOEVER, AND THE FACT THAT THE GOVERNMENT MAY HAVE PROVIDED, FURNISHED, OR IN ANY WAY SUPPLIED THE SAID DRAWINGS, SPECIFICATIONS, OR OTHER DATA IS NOT TO BE REGARDED AS IMPLYING OR CONSTITUTING AN ENDORSEMENT OR APPROVAL OF THE QUALITY OF ANY OTHER PRODUCT OR OPERATION, OR CONFIRMING ANY STATE OR PERFORMANCE TO MANUFACTURE, USE, OR SELL ANY PRODUCT INVENTION THAT MAY IN ANY WAY BE RELATED THERETO.

THIS DOCUMENT HAS BEEN PURCHASED BY THE GOVERNMENT AND MAY BE REPRODUCED AND USED IN CONNECTION WITH ANY GOVERNMENT PROCUREMENT OR MAINTENANCE OPERATION

* FOR INFORMATION ONLY. CONTRACTOR MAY AT HIS OPTION DEVIATE FROM THESE PROCESS DETAILS.

REVISIONS			
SYM	DESCRIPTION	DATE	APPROVAL
A	ADDED SM-B-249226-8 AND -9	JUN 56	W. 00189 [Signature]



COLLINS PART NO.	DASH NO.	LENGTH 'L' INCHES	EAG PT. NO.
558 0167 002	SM-B-249226-1	1/8	F500-0397
559 0168 002		3/16	F500-0398
559 0170 002		5/16	F500-0399
559 0172 002		9/16	F500-0400
559 0173 002		1 1/8	F500-0401
559 0169 002		1/4	
559 0171 002		3/8	F500-0402
		-8	F500-1053
		-9	F500-1054

NOTES:
1. PART MAY BE TYPE NO 8980A5 SUPPLIED BY OAK MFG. CO., CHICAGO, ILL. OR EQUAL, PROVIDING IT MEETS THE FOLLOWING REQUIREMENTS AND DIMENSIONS SHOWN.

DESCRIPTION: SPACER FOR ROTARY SWITCHES, FOR TYPE "F" WAFERS.
MATERIAL: STEEL
FINISH: M262 OR M264 PER SPEC MIL-F-14072.

COLLINS PART NO.	ITEM	REQD.	PART NO.	DESCRIPTION	DATE	MARK SPEC.
LIST OF MATERIAL						
*COLLINS PART NO. 559 0167/0173 002						

DRAWN RAW				CHECKED [Signature]		APPROVED		COLLINS RADIO CO. -SEAR-DAVIS-1934 14214-PH-51-93		DEPARTMENT OF THE ARMY SIGNAL CORPS ENGINEERING LABORATORIES FORT MONMOUTH NEW JERSEY	
UNLESS OTHERWISE SPECIFIED: DECIMAL DIMENSIONS INCLUDING HOLE SIZES MAY VARY ± .002 FRACTIONAL DIMENSIONS INCLUDING HOLE SIZES MAY VARY ± 1/64 MACHINED ANGLES MAY VARY ± 1° SHEARED ANGLES MAY VARY ± 20° BROKEN ANGLES MAY VARY ± 1° ECCENTRICITY BETWEEN ANY DIAMETERS ON THE SAME CENTERLINE SHALL NOT EXCEED .010 TOTAL INDICATOR READING. ALL DIMENSIONS ARE FINISH DIMENSIONS INCLUDING APPLIED FINISH AND ARE GIVEN IN INCHES				SIGNAL CORPS		REVIEWED PME		APPROVED HLY PME			
APPLICATION				DATE 12 JAN 56		SCALE				SM-B-249226	