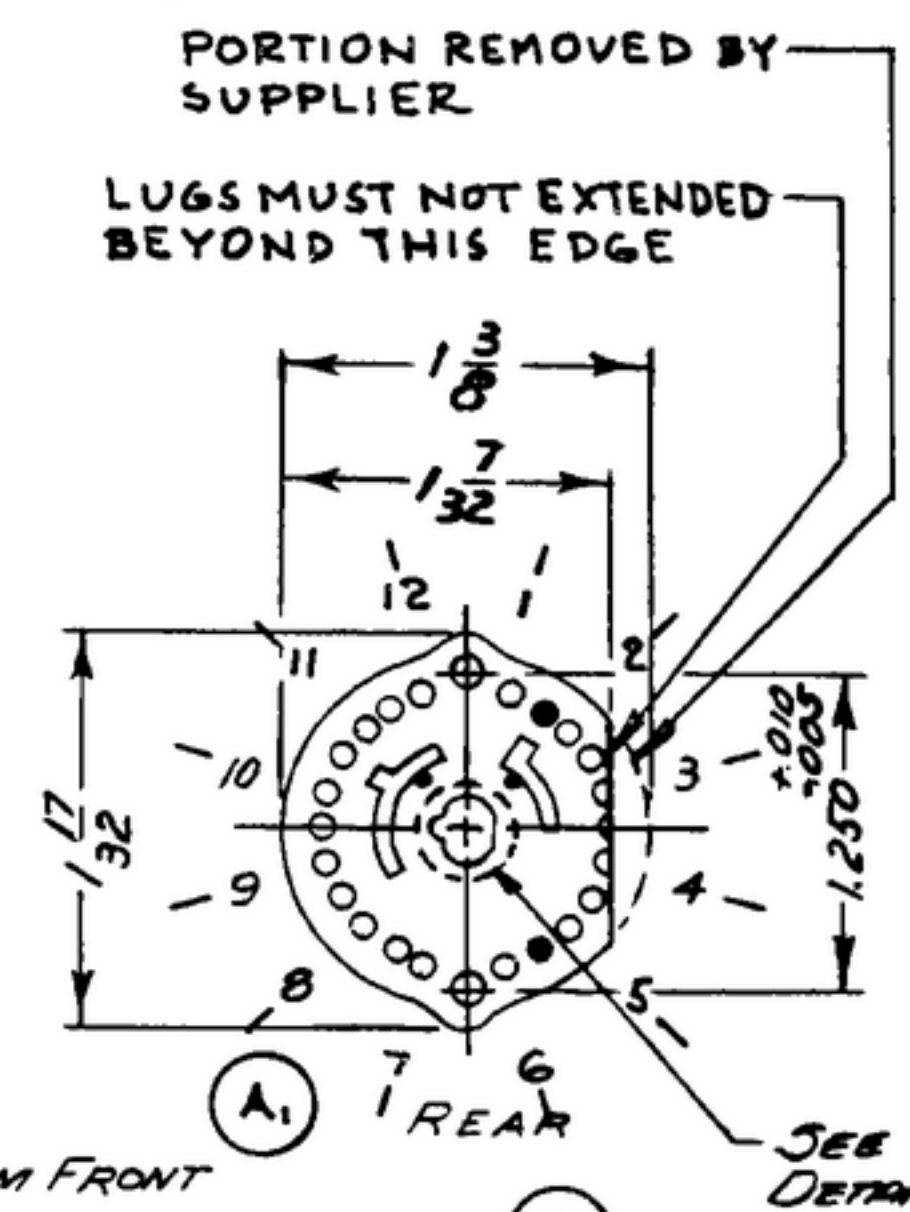
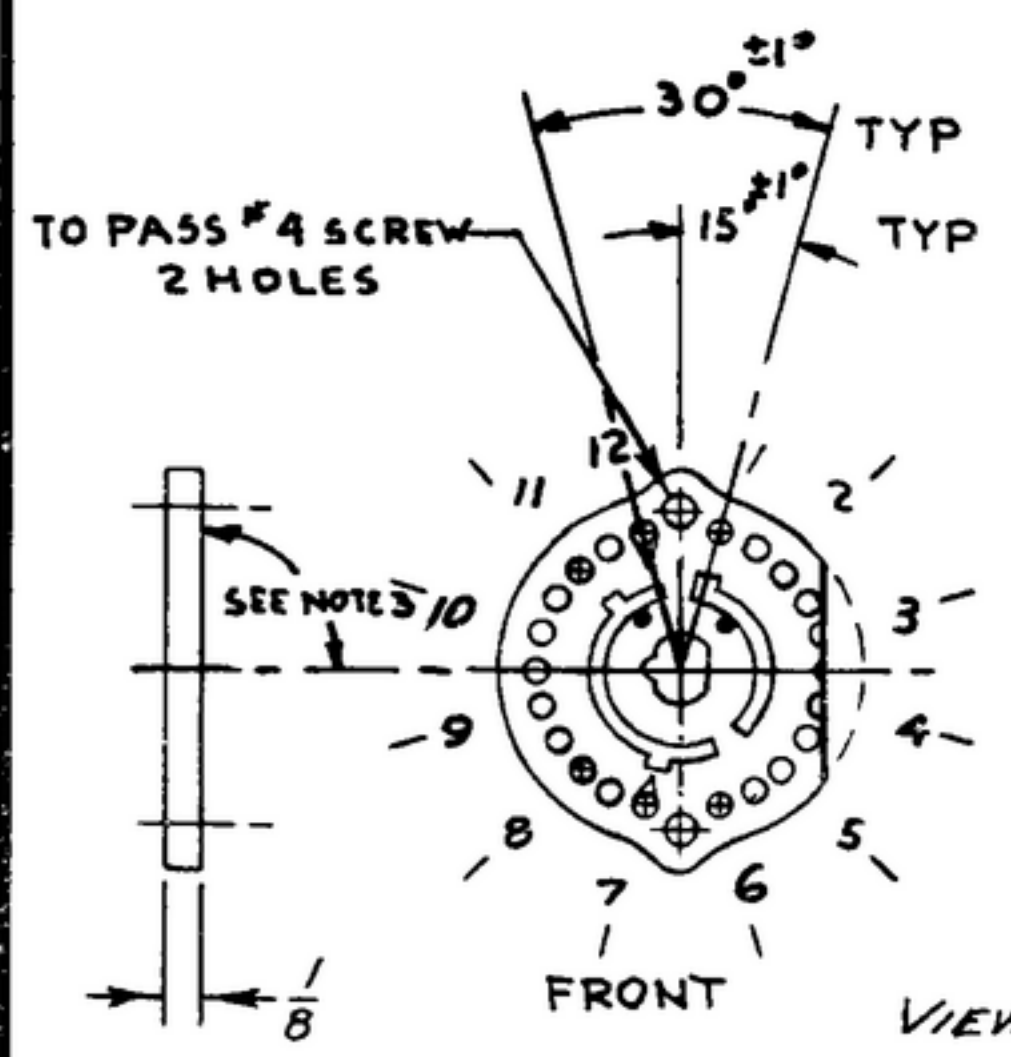


NOTICE: WHEN GOVERNMENT DRAWINGS, SPECIFICATIONS, OR OTHER DATA ARE USED FOR ANY PURPOSE OTHER THAN IN CONNECTION WITH A DEFINITELY RELATED GOVERNMENT PROCUREMENT OPERATION, THE UNITED STATES GOVERNMENT THEREBY INCURS NO RESPONSIBILITY NOR ANY OBLIGATION WHATSOEVER, AND THE FACT THAT THE GOVERNMENT MAY HAVE FORMULATED, FURNISHED, OR IN ANY WAY SUPPLIED THE SAID DRAWINGS, SPECIFICATIONS, OR OTHER DATA IS NOT TO BE REGARDED BY IMPLICATION OR OTHERWISE AS IN ANY MANNER LICENSING THE HOLDER OR ANY OTHER PERSON OR CORPORATION, OR CONFERRING ANY RIGHTS OR PERMISSION TO MANUFACTURE, USE, OR SELL ANY PATENTED INVENTION THAT MAY IN ANY WAY BE RELATED THERETO.

THIS DOCUMENT HAS BEEN PURCHASED BY THE GOVERNMENT AND MAY BE REPRODUCED AND USED IN CONNECTION WITH ANY GOVERNMENT PROCUREMENT OR MAINTENANCE OPERATION.

* FOR INFORMATION ONLY. CONTRACTOR MAY AT HIS OPTION DEViate FROM THESE PROCESS DETAILS.

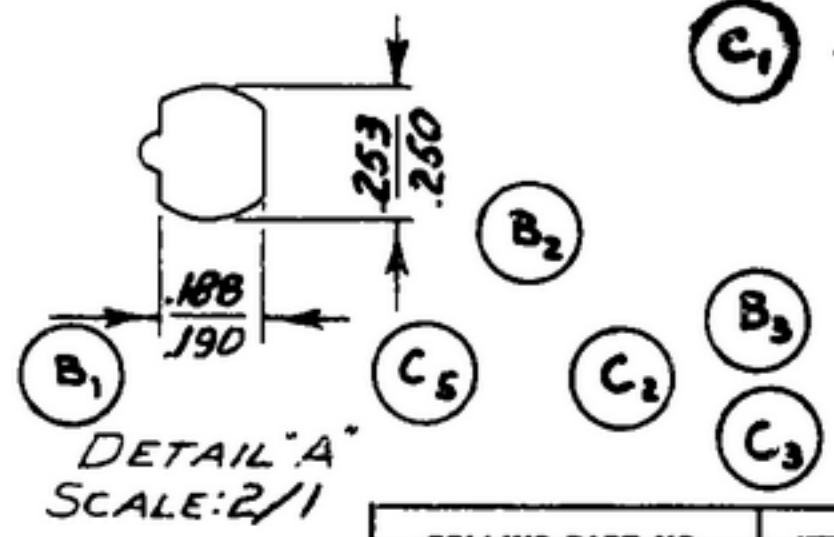
REVISIONS				
SYM	DESCRIPTION	DATE	APPROVAL	
A₁	A₁ CORRECTED REAR VIEW OF SWITCH	6 NOV 59	4242B-PC 59-A1-S1	REV'D PME
B₃	B₁ WAS .188/.186 & "REF" ADDED B₂ "REF" ADDED B₃ NOTE #2 ADDED	17 OCT 60	4242B-PC 59	REV'D PME
C₅	C₁ DELETED NOTE, C₂ DELETED NOTE 2 C₃ ADDED NOTE 3, C₄ ADDED NOTE 4 C₅ "REF" REMOVED 2 PLACES .188/.190 WAS .189/.191	7 DEC 59	4242B-PC 59	REV'D PME



KEY TO SYMBOLS

- ⊕ SHORT CLIP
- ⊕ LONG CLIP
- SHORT CLIP - REVERSED
- NO CLIP

4. ALL CONTACTS MUST BE LOCATED IN POSITIONS SHOWN CENTERS OF ENGAGEMENT AREAS OF CONTACT CLIPS MUST BE MAINTAINED AT 15° AND/OR 30° STARTING FROM WAFER MOUNTING CENTERS. TOLERANCES NONCUMULATIVE



NOTES:
1. PART MAY BE #71053-JC, AS SUPPLIED BY OAK MFG. CO., CHICAGO, ILL., OR EQUAL, PROVIDING IT MEETS THE FOLLOWING REQUIREMENTS AND DIMENSIONS SHOWN.

DESCRIPTION: 2 CIRCUIT (2 POLE), L2 POSITION ROTARY WAFER SWITCH SECTION.
INSULATION: STEATITE, GRADE L-48 OR BETTER IN ACCORDANCE WITH JOINT ARMY-NAVY SPECIFICATION JAN-1-10, TREATED WITH DOW-CORNING DC-200, AS SUPPLIED BY DOW-CORNING CORP., CHICAGO, ILL., OR EQUIVALENT, IN STRICT ACCORDANCE WITH MANUFACTURER'S RECOMMENDATIONS.
CLIPS: SPRING SILVER ALLOY, BENT 60° - 75°.
ROTOR BLADES: SHORTING TYPE, COIN SILVER ALLOY, CORRESPOND FRONT AND REAR BLADE SEGMENTS SHALL BE ELECTRICALLY CONNECTED AND SOLDERED TOGETHER.
~~PRODUCTION TESTING SHALL CONSIST OF THE FOLLOWING: VISUAL INSPECTION, INDEXING AND FUNCTION.~~
OPERATING TEMPERATURE RANGE: -55°C TO +100°C.
EVIDENCE OF CRACKING OR CHIPPING OF THE MATERIAL SHALL BE CAUSE FOR REJECTION.
*SAMPLE MUST BE SUBMITTED TO CONTRACTOR'S ENGINEERING DEPARTMENT FOR APPROVAL BEFORE SHIPMENT OF PRODUCTION UNITS
2. ~~SWITCH SECTION TO BE DESIGNED TO OPERATE WITH PART NO SM-B-249051 SHAFT~~
3. CENTER HOLE MUST BE PERPENDICULAR (90°) TO WAFER WITHIN ±1°

COLLINE PART NO.	ITEM	REQD	PART NO.	DESCRIPTION	QTY	UNIT SPEC
LIST OF MATERIAL						
COLLINE PART NO. 558 0177 002						

DRAWN ECS			CHECKED <i>[Signature]</i>			APPROVED			COLLINE-RADIO-60- -6048-RAPID-10WA 14214-PH- 51-93			DEPARTMENT OF THE ARMY SIGNAL CORPS ENGINEERING LABORATORIES FORT MONMOUTH NEW JERSEY		
UNLESS OTHERWISE SPECIFIED: DECIMAL DIMENSIONS INCLUDING HOLE SIZES MAY VARY ±.008 FRACTIONAL DIMENSIONS INCLUDING HOLE SIZES MAY VARY ±1/64 MACHINED ANGLES MAY VARY ±.1° SHEARED ANGLES MAY VARY ±.25° BROKEN ANGLES MAY VARY ±.1° ECCENTRICITY BETWEEN ANY DIAMETERS ON THE SAME CENTERLINE SHALL NOT EXCEED .010 TOTAL INDICATOR READING. ALL DIMENSIONS ARE FINISH DIMENSIONS INCLUDING APPLIED FINISH AND ARE GIVEN IN INCHES.									SIGNAL CORPS					
558 0451 004 - SM-D-249100 SC-DX-248775									REVIEWED PME			SM-B-249229		
COLLINE NO. - QTY - NEXT ASSY - USED ON									APPROVED HLV PME					
APPLICATION									DATE 12 JAN 56			SCALE 1/1		