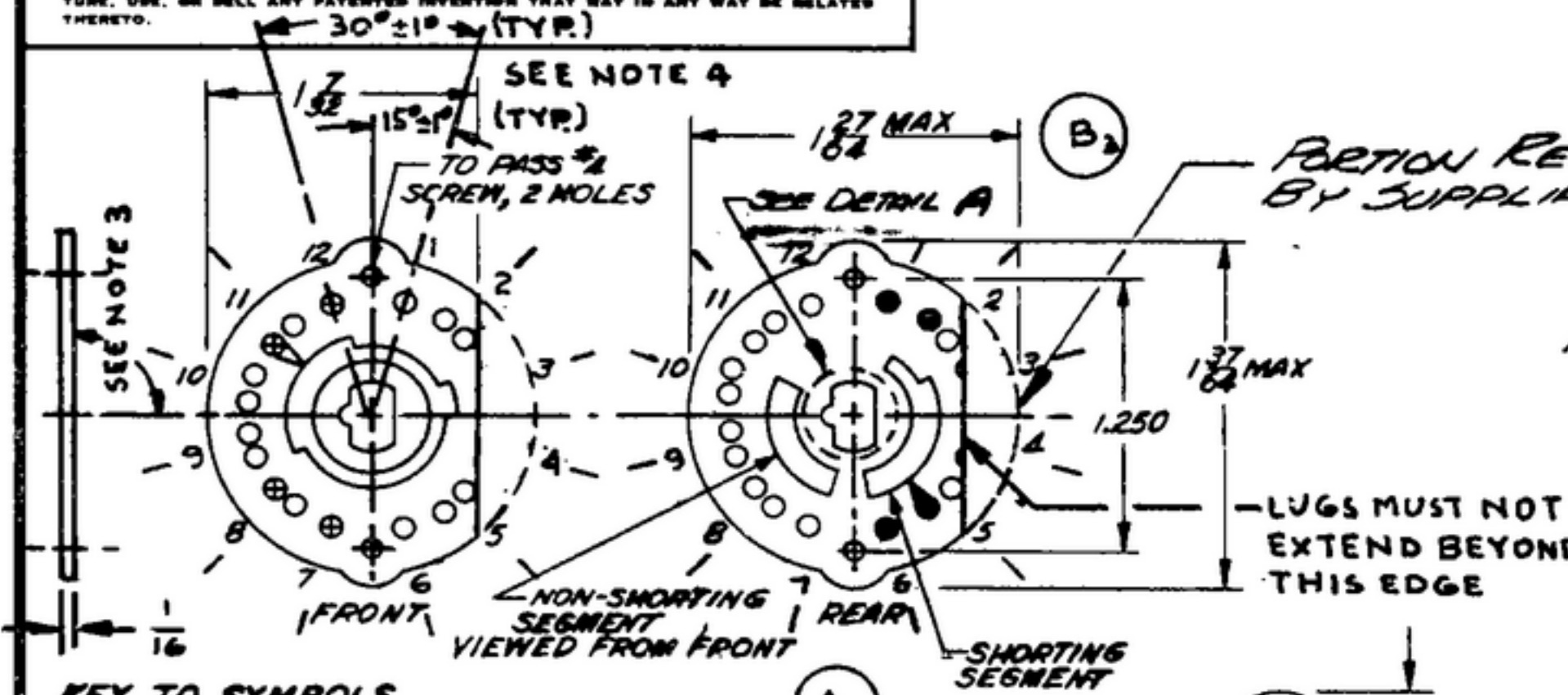


NOTICE: WHEN GOVERNMENT DRAWINGS, SPECIFICATIONS, OR OTHER DATA ARE USED FOR ANY PURPOSE OTHER THAN IN CONNECTION WITH A DEFINITELY RELATED GOVERNMENT PROCUREMENT OPERATION, THE UNITED STATES GOVERNMENT THEREBY INCURS NO RESPONSIBILITY FOR ANY OMISSION, ERROR, OR IN ANY WAY SUPPLIED THE SAID DRAWINGS, SPECIFICATIONS, OR OTHER DATA IS NOT TO BE RELEASED BY REPLICATION OR OTHERWISE AS IN ANY MANNER IMPLICATING THE HOLDER OR ANY OTHER PERSON OR CORPORATION, OR CONVEYING ANY RIGHTS OR PERMISSION TO MANUFACTURE, USE, OR SELL ANY PATENTED INVENTION THAT MAY IN ANY WAY BE RELATED THERETO.

THIS DOCUMENT HAS BEEN PURCHASED BY THE GOVERNMENT AND MAY BE REPRODUCED AND USED IN CONNECTION WITH ANY GOVERNMENT PROCUREMENT OR MAINTENANCE OPERATION.

\* FOR INFORMATION ONLY. CONTRACTOR MAY AT HIS OPTION DEVIATE FROM THESE PROCESS DETAILS.

REVISIONS				
SYM	DESCRIPTION	DATE	APPROVAL	
<del>A<sub>2</sub></del>	<del>A<sub>1</sub> ADDED CLIP A<sub>2</sub> CORRECTED REAR VIEW OF SWITCH</del>	<del>6 NOV 59</del>	<del>42428-PC-59 A1-5 REV'D PME</del>	
<del>B<sub>3</sub></del>	<del>B<sub>1</sub> WAS .188/.186 6" REF" ADDED B<sub>2</sub> "REF" ADDED B<sub>3</sub> NOTE 2 ADDED</del>	<del>17 OCT 60</del>	<del>42428-PC-59 REV'D PME</del>	
<del>C<sub>5</sub></del>	<del>C<sub>1</sub> DELETED NOTE 2, C<sub>2</sub> DELETED NOTE 2 C<sub>3</sub> ADDED NOTE 3 C<sub>4</sub> ADDED NOTE 4 C<sub>5</sub> "REF" REMOVED 2 PLACES .188 WAS .189 .190 191</del>	<del>8 DEC 60</del>	<del>42428-PC-59 REV'D PME</del>	



- KEY TO SYMBOLS**
- ⊕ SHORT CLIP
  - ⊕ LONG CLIP
  - SHORT CLIP - REVERSED
  - NO CLIP
  - ◐ LONG CLIP - REVERSED

4. ALL CONTACTS MUST BE LOCATED IN POSITIONS SHOWN. CENTERS OF ENGAGEMENT AREAS OF CONTACT CLIPS MUST BE MAINTAINED AT  $\pm 15^\circ$  AND/OR  $30^\circ$  STARTING FROM WAFER MOUNTING CENTER TOLERANCES NON CUMULATIVE

**NOTES:**

- PART MAY BE TYPE K, AS SUPPLIED BY OAK MFG. CO., CHICAGO, ILL., OR EQUAL, PROVIDING IT MEETS THE FOLLOWING REQUIREMENTS AND DIMENSIONS SHOWN.  
**DESCRIPTION:** 3 CIRCUIT (3 POLE), 12 POSITION ROTARY WAFER SWITCH SECTION.  
**INSULATION:** GLASS SILICONE, ONE SIDE SANDUED (PANELYTE 130 OR EQUIVALENT) TREATED WITH A SILICONE VARNISH.  
**ROTOR:** POLYMONOCHLORIFLUOROETHYLENE  
**CLIPS:** SPRING SILVER ALLOY, BENT  $60^\circ - 75^\circ$   
**ROTOR BLADES:** COIN SILVER ALLOY. FRONT BLADE, SHORTING TYPE, REAR BLADE, SEE DRAWING.
- ~~SWITCH SECTION TO BE DESIGNED TO OPERATE WITH PART NO. 6M-B-249051 SHAFT~~
- ~~PRODUCTION TESTING SHALL CONSIST OF THE FOLLOWING: VISUAL INSPECTION INDEXING AND FUNCTIONAL EVIDENCE OF CRACKING OR CHIPPING OF THE MATERIAL SHALL BE CAUSE FOR REJECTION.~~

\* SAMPLE MUST BE SUBMITTED TO PRIME CONTRACTOR'S ENGINEERING DEPARTMENT FOR APPROVAL BEFORE SHIPMENT OF PRODUCTION UNITS.

OPERATING TEMPERATURE RANGE  $-55^\circ\text{C}$  TO  $+100^\circ\text{C}$ .

3. CENTER HOLE MUST BE PERPENDICULAR ( $90^\circ$ ) TO WAFER WITHIN  $\pm 1^\circ$

COLLINE PART NO.	ITEM	REQD	PART NO.	DESCRIPTION	MATL	MATL SPEC
LIST OF MATERIAL						
-COLLINE PART NO. <i>559 0179 002</i>						

COLLINE NO.	QTY	NEXT ASSY	USED ON
<i>558 0451 004</i>	<i>1</i>	<i>SM-D-249100</i>	<i>SCDL-248775</i>
APPLICATION			

**DRAWN** RCHILL  
**CHECKED** [Signature]  
**APPROVED**

UNLESS OTHERWISE SPECIFIED:  
 DECIMAL DIMENSIONS INCLUDING HOLE SIZES MAY VARY  $\pm .005$   
 FRACTIONAL DIMENSIONS INCLUDING HOLE SIZES MAY VARY  $\pm 1/64$   
 MACHINED ANGLES MAY VARY  $\pm .1^\circ$   
 SHEARED ANGLES MAY VARY  $\pm .25^\circ$   
 BROKEN ANGLES MAY VARY  $\pm .1^\circ$   
 ECCENTRICITY BETWEEN ANY DIAMETERS ON THE SAME CENTERLINE SHALL NOT EXCEED .010 TOTAL INDICATOR READING.  
 ALL DIMENSIONS ARE FINISH DIMENSIONS INCLUDING APPLIED FINISH AND ARE GIVEN IN INCHES.

COLLINE-RADIO CO.  
 OSGAR-RAPIDS, IOWA  
*14214-PH-51-93*  
 SIGNAL CORPS  
 REVIEWED PME  
 APPROVED HLY PME  
 DATE *21 JUN 56* SCALE *1/1*

*SECTION-ROTARY SWITCH*

DEPARTMENT OF THE ARMY  
 SIGNAL CORPS ENGINEERING LABORATORIES  
 FORT MONMOUTH NEW JERSEY  
*SM-B-249231*