

EQUIP. TYPE *R399A/URR* EXP. NO.

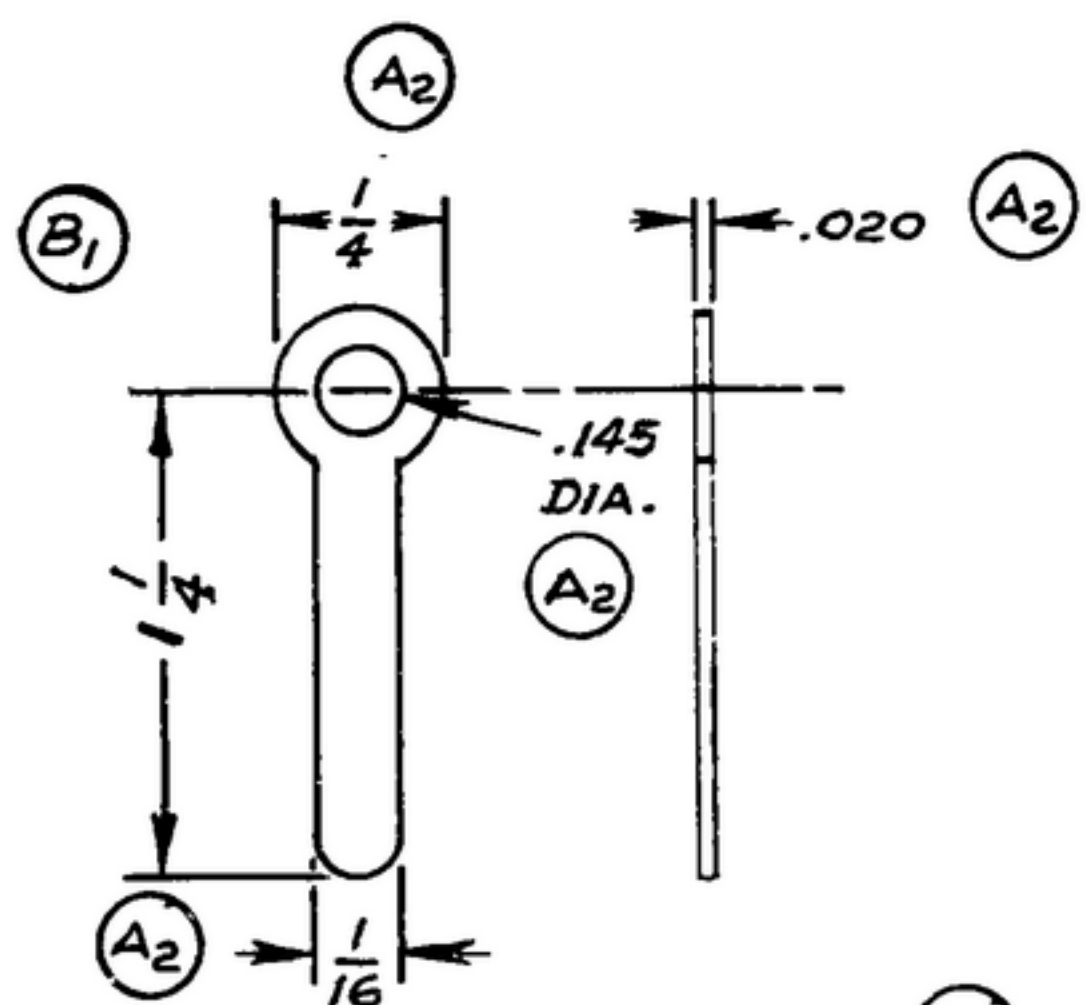
COL 304 026900

NOTICE: WHEN GOVERNMENT DRAWINGS, SPECIFICATIONS, OR OTHER DATA ARE USED FOR ANY PURPOSE OTHER THAN IN CONNECTION WITH A DEFINITELY RELATED GOVERNMENT PROCUREMENT OPERATION, THE UNITED STATES GOVERNMENT THEREBY INCURS NO RESPONSIBILITY NOR ANY OBLIGATION WHATSOEVER; AND THE FACT THAT THE GOVERNMENT MAY HAVE FORMULATED, FURNISHED, OR IN ANY WAY SUPPLIED THE SAID DRAWINGS, SPECIFICATIONS, OR OTHER DATA IS NOT TO BE REGARDED BY IMPLICATION OR OTHERWISE AS IN ANY MANNER LICENSING THE HOLDER OR ANY OTHER PERSON OR CORPORATION, OR CONVEYING ANY RIGHTS OR PERMISSION TO MANUFACTURE, USE OR SELL ANY PATENTED INVENTION THAT MAY IN ANY WAY BE RELATED THERETO.

THIS DOCUMENT HAS BEEN PURCHASED BY THE GOVERNMENT AND MAY BE REPRODUCED AND USED IN CONNECTION WITH ANY GOVERNMENT PROCUREMENT OR MAINTENANCE OPERATION.

*FOR INFORMATION ONLY. CONTRACTOR MAY AT HIS OPTION DEVIATE FROM THESE PROCESS DETAILS.

REVISIONS			
SYM	DESCRIPTION	DATE	APPROVAL
A2	A1 - PART WAS #4034 AS SUPPLIED BY PATTON - MAC. GUYER CO. ETC. A2 - 1/4 DIM. WAS 5/16, 1/16 WAS 5/32, .020 WAS .016, .145 DIA WAS .155	6 NOV 59	42428-PC-59-A1-51 REV'D. PME
B1	B1 - REMOVED STRAY ARROWHEAD.	5 APRIL 60	42428-PC-59 REV'D. PME



NOTES:
 1. PART MAY BE # 4006 AS SUPPLIED BY CLINCH MFG. CORP. CHICAGO ILLINOIS, OR EQUAL, PROVIDING IT MEETS.
 THE FOLLOWING REQUIREMENTS & DIMENSIONS SHOWN.
 DESCRIPTION: SOLDER TYPE LUG WITH HOLE FOR CLEARANCE OF #6-32 SCREW.
 MATERIAL: COPPER OR BRASS
 FINISH: M317 PER SPEC MIL-F-14072

COLLINE PART NO.	ITEM	REQD	PART NO.	DESCRIPTION	MATL	MATL SPEC
LIST OF MATERIAL						
COLLINE PART NO <i>559 0207002</i>						

				DRAWN <i>R.E.B.</i>	CHECKED <i>Bl</i>	APPROVED	COLLINE RADIO CO. -OSCAR-RAPIDS-16WA <i>14214-PH-51-93</i>	DEPARTMENT OF THE ARMY SIGNAL CORPS ENGINEERING LABORATORIES FORT MONMOUTH NEW JERSEY
				UNLESS OTHERWISE SPECIFIED: DECIMAL DIMENSIONS INCLUDING HOLE SIZES MAY VARY ±.005 FRACTIONAL DIMENSIONS INCLUDING HOLE SIZES MAY VARY ±.1" MACHINED ANGLES MAY VARY ±.1° SHEARED ANGLES MAY VARY ±.25° BROKEN ANGLES MAY VARY ±.1° ECCENTRICITY BETWEEN ANY DIAMETERS ON THE SAME CENTERLINE SHALL NOT EXCEED .010 TOTAL INDICATOR READING. ALL DIMENSIONS ARE FINISH DIMENSIONS INCLUDING APPLIED FINISH AND ARE GIVEN IN INCHES.			SIGNAL CORPS REVIEWED <i>PME</i> APPROVED <i>HLV</i> <i>PME</i>	
<i>559-0452-005</i>	<i>1</i>	<i>SM-E-249101</i>	<i>SC-DL-248715</i>	APPLICATION		DATE <i>29 MAR '56</i>	SCALE <i>2/1</i>	<i>SM-B-249253</i>