

EQUIP. TYPE R-50A/HR EXP. NO.

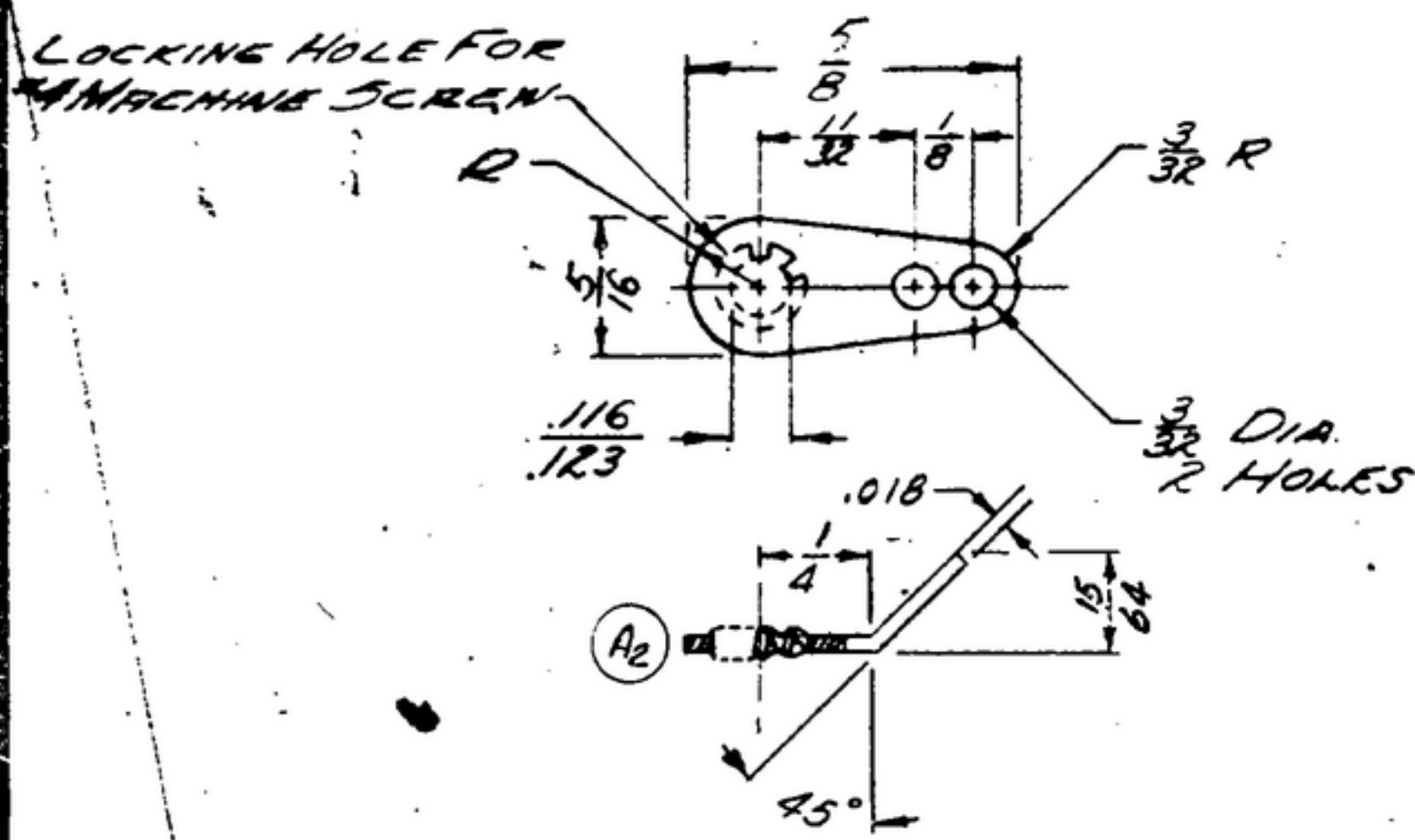
COL 304 3110 00

NOTICE: WHEN GOVERNMENT DRAWINGS, SPECIFICATIONS, OR OTHER DATA ARE USED FOR ANY PURPOSE OTHER THAN IN CONNECTION WITH A DEFINITELY RELATED GOVERNMENT PROCUREMENT OPERATION, THE UNITED STATES GOVERNMENT THEREBY ISSUES NO RESPONSIBILITY OR ANY OBLIGATION WHATSOEVER AND THE FACT THAT THE GOVERNMENT MAY HAVE PROVIDED, PUBLISHED, OR IN ANY WAY SUPPLIED THE SAID DRAWINGS, SPECIFICATIONS, OR OTHER DATA IS NOT TO BE REGARDED BY IMPLICATION OR OTHERWISE AS IN ANY MANNER LICENSING THE HOLDER OR ANY OTHER PERSON OR CORPORATION, OR CONVEYING ANY RIGHTS OR PERMISSION TO MANUFACTURE, USE, OR SELL ANY PATENTED INVENTION THAT MAY IN ANY WAY BE RELATED THERETO.

THIS DOCUMENT HAS BEEN PURCHASED BY THE GOVERNMENT AND MAY BE REPRODUCED AND USED IN CONNECTION WITH ANY GOVERNMENT PROCUREMENT OR MAINTENANCE OPERATION.

\* FOR INFORMATION ONLY. CONTRACTOR MAY AT HIS OPTION DEVIATE FROM THESE PROCESS DETAILS.

REVISIONS			
SYM	DESCRIPTION	DATE	APPROVAL
A <sub>2</sub>	(1) PT # WAS 2102-04-00 (2) REVISED VIEW	30 JAN 1963	52713-PP-81 REV'D PME



NOTES:  
 1. PART MAY BE #2104-04-00 AS SUPPLIED BY SHAKERROOF INC., CHICAGO, ILL., OR EQUAL, PROVIDING IT MEETS THE FOLLOWING REQUIREMENTS & DIMENSIONS SHOWN.  
 MATERIAL: PHOSPHOR BRONZE.  
 FINISH: M21 PER SPEC MIL-F-14072.

		SM-D-144561	
		SM-C-144602	
		SM-D-144824	
		SM-C-144820	
		SM-D-144532	
		SM-D-144882	SC-DL-144500
		SM-D-143286	
		SM-C-143514	
		SM-D-143576	
		SM-D-143744	
		SM-D-143585	
		SM-D-143595	
		SM-C-144100	SC-DL-143280
558 0501 008	+	SM-C-249449	
558 0486 004	+	SM-D-249134	
558 0396 004	+	SM-D-249007	
558 0340 004	+	SM-D-248801	SC-DL-248775
COLLINS NO	QTY	NEXT ASST	USED ON
APPLICATION			

COLLINS PART NO.	ITEM	QTY	PART NO.	DESCRIPTION	DATE	DATE SPEC
LIST OF MATERIAL						
COLLINS PART NO. 559 0210 002						

DRAWN	CHECKED	APPROVED	COLLINS RADIO CO. 14214-PLH-51-93	DEPARTMENT OF THE ARMY SIGNAL CORPS ENGINEERING LABORATORIES  FORT MONMOUTH NEW JERSEY  SM-B-249256
RDG			SIGNAL CORPS	
UNLESS OTHERWISE SPECIFIED			REVIEWED PME	
DECIMAL DIMENSIONS INCLUDING HOLE SIZES MAY VARY ±.003			APPROVED HLY PME	
FRACTIONAL DIMENSIONS INCLUDING HOLE SIZES MAY VARY ±.004			DATE 16 JAN 1955	SCALE 2/1
MACHINED ANGLES MAY VARY ±1°				
SHEARED ANGLES MAY VARY ±.25°				
BROKEN ANGLES MAY VARY ±1°				
ECCENTRICITY BETWEEN ANY DIAMETERS ON THE SAME CENTERLINE SHALL NOT EXCEED .010 TOTAL INDICATOR READING.				
ALL DIMENSIONS ARE FINISH DIMENSIONS INCLUDING APPLIED FINISH AND ARE GIVEN IN INCHES.				