

EQUIP. TYPE *R390A/HRR* EXP. NO.

*COL-367-1853-00*

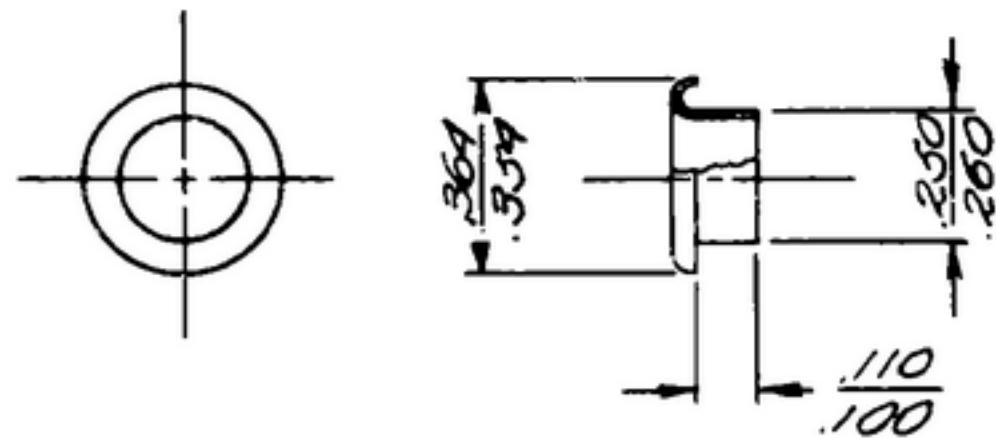
NOTICE: WHEN GOVERNMENT DRAWINGS, SPECIFICATIONS, OR OTHER DATA ARE USED FOR ANY PURPOSE OTHER THAN IN CONNECTION WITH A DEFINITELY RELATED GOVERNMENT PROCUREMENT OPERATION, THE UNITED STATES GOVERNMENT THEREBY INCURS NO RESPONSIBILITY NOR ANY OBLIGATION WHATSOEVER; AND THE FACT THAT THE GOVERNMENT MAY HAVE FORMULATED, FURNISHED, OR IN ANY WAY SUPPLIED THE SAID DRAWINGS, SPECIFICATIONS, OR OTHER DATA IS NOT TO BE REGARDED BY IMPLICATION OR OTHERWISE AS IN ANY MANNER LICENSING THE HOLDER OR ANY OTHER PERSON OR CORPORATION, OR CONFERRING ANY RIGHTS OR PERMISSION TO MANUFACTURE, USE, OR SELL ANY PATENTED INVENTION THAT MAY IN ANY WAY BE RELATED THERE TO.

THIS DOCUMENT HAS BEEN PURCHASED BY THE GOVERNMENT AND MAY BE REPRODUCED AND USED IN CONNECTION WITH ANY GOVERNMENT PROCUREMENT OR MAINTENANCE OPERATION.

\* FOR INFORMATION ONLY, CONTRACTOR MAY AT HIS OPTION DEVIATE FROM THESE PROCESS DETAILS.

REVISIONS

SYM	DESCRIPTION	DATE	APPROVAL
-----	-------------	------	----------



NOTES:

1. PART MAY BE #488 AS SUPPLIED BY AMERICAN BRASS CO, WATERBURY, CONN, OR EQUAL, PROVIDING IT MEETS THE FOLLOWING REQUIREMENTS & DIMENSIONS SHOWN.

DESCRIPTION: ROLLED FLANGE EYELET  
 MATERIAL: BRASS  
 FINISH: A262 PER SPEC MIL-F-14072

COLLINS PART NO.	ITEM	QTY	PART NO.	DESCRIPTION	DATE	DATE
LIST OF MATERIAL						
COLLINS PART NO. <i>559 0229 002</i>						

DRAWN <i>RAH</i>				CHECKED <i>[Signature]</i>		APPROVED		COLLINS-RADIO CO. -SEAR-RAFTS-10WA <i>14214 - P.H.</i> <i>51-93</i>		DEPARTMENT OF THE ARMY SIGNAL CORPS ENGINEERING LABORATORIES FORT MONMOUTH NEW JERSEY															
UNLESS OTHERWISE SPECIFIED: DECIMAL DIMENSIONS INCLUDING HOLE SIZES MAY VARY ±.002 FRACTIONAL DIMENSIONS INCLUDING HOLE SIZES MAY VARY ±1/64 MACHINED ANGLES MAY VARY ±.1° SHEARED ANGLES MAY VARY ±.25° BROKEN ANGLES MAY VARY ±.1° ECCENTRICITY BETWEEN ANY DIAMETERS ON THE SAME CENTERLINE SHALL NOT EXCEED .010 TOTAL INDICATOR READING. ALL DIMENSIONS ARE FINISH DIMENSIONS INCLUDING APPLIED FINISH AND ARE GIVEN IN INCHES.				SIGNAL CORPS		REVIEWED <i>PME</i>		<i>EYELET</i>																	
<table border="1"> <thead> <tr> <th>COLLINS NO.</th> <th>QTY</th> <th>NEXT ASSY</th> <th>USED ON</th> </tr> </thead> <tbody> <tr> <td><i>5MB-144102</i></td> <td></td> <td></td> <td></td> </tr> <tr> <td><i>5M-E-144254</i></td> <td><i>562-143280</i></td> <td></td> <td></td> </tr> <tr> <td><i>558 0358 003</i></td> <td><i>1</i></td> <td><i>SM-C-245009</i></td> <td><i>SC-DL-248775</i></td> </tr> </tbody> </table>				COLLINS NO.	QTY	NEXT ASSY	USED ON			<i>5MB-144102</i>				<i>5M-E-144254</i>	<i>562-143280</i>			<i>558 0358 003</i>	<i>1</i>	<i>SM-C-245009</i>	<i>SC-DL-248775</i>	APPROVED <i>HLV</i> <i>PME</i>		DATE <i>17 JAN 56</i>	
COLLINS NO.	QTY	NEXT ASSY	USED ON																						
<i>5MB-144102</i>																									
<i>5M-E-144254</i>	<i>562-143280</i>																								
<i>558 0358 003</i>	<i>1</i>	<i>SM-C-245009</i>	<i>SC-DL-248775</i>																						
APPLICATION										<i>SM-B-283150</i>															