

EQUIP. TYPE **R390A/JURR** EXP NO

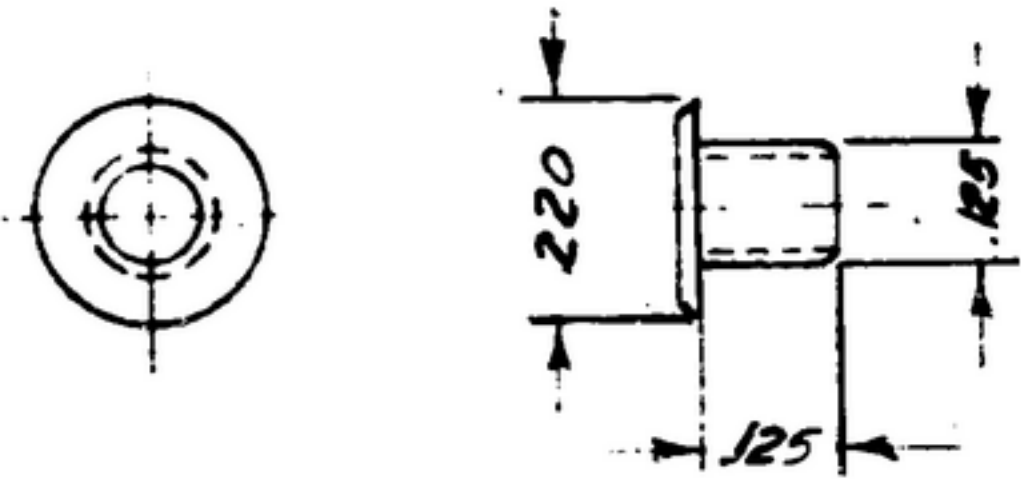
~~492-127-1460-00~~

UNLESS OTHERWISE SPECIFIED, ALL DIMENSIONS ARE TO BE GIVEN IN INCHES AND DECIMAL FRACTIONS THEREOF. THE UNITED STATES GOVERNMENT TAKES NO RESPONSIBILITY FOR ANY OBLIGATION WHATSOEVER AND THE FACT THAT THE UNITED STATES GOVERNMENT HAS FINANCED OR IN ANY WAY SUPPORTED THE DEVELOPMENT OF THIS DRAWING OR THE DATA THEREON OR THE RESULTS OF ANY OTHER RESEARCH OR EXPERIMENT OR THE CONDUCT OF ANY OTHER WORK OR THE INVENTION OF ANY PATENT OR OTHER RIGHTS IN ANY WAY BEING CLAIMED OR MAY BE CLAIMED HEREON.

THIS DRAWING HAS BEEN FILED WITH THE GOVERNMENT AND MAY BE REPRODUCED AND USED IN ANY MANNER WITHOUT PERMISSION TO THE DRAWING OR THE DATA THEREON.

* FOR INFORMATION ONLY. CONTRACTOR MAY AT HIS OPTION DEVIATE FROM THESE PROCESS DETAILS

REVISIONS			
SYM	DESCRIPTION	DATE	APPROVAL
A ₁	A ₁ - ADDED .013 THK. TO MATL	21 NOV 1966	6-00189 REV'D. <i>[Signature]</i>



NOTES:

- PART MAY BE #482 AS SUPPLIED BY AMERICAN BRASS CO, WATERBURY, CONN, OR EQUAL, PROVIDING IT MEETS THE FOLLOWING REQUIREMENTS & DIMENSIONS SHOWN.

DESCRIPTION: ROLLED FLANGE EYELET
 MATERIAL: BRASS .013 THK.
 FINISH: M262 PER SPEC MIL-F-19072.

EAC No. 15001039

COLLINS PART NO.	ISSN	ISSD	PART NO.	DESCRIPTION	QTY	UNIT
LIST OF MATERIAL						
COLLINS PART NO. 559-0232-002						

DRAWN <i>ECS</i>		CHECKED <i>[Signature]</i>	APPROVED	COLLINS RADIO CO. LEDAS RABUS-IOWA 14214-PH-51-93	EYELET	DEPARTMENT OF THE ARMY SIGNAL CORPS ENGINEERING LABORATORIES FORT MONMOUTH NEW JERSEY
UNLESS OTHERWISE SPECIFIED: DECIMAL DIMENSIONS INCLUDING HOLE SIZES MAY VARY ± .015 FRACTIONAL DIMENSIONS INCLUDING HOLE SIZES MAY VARY ± .004 MACHINED ANGLES MAY VARY ± 1° SHEARED ANGLES MAY VARY ± 25° BROKEN ANGLES MAY VARY ± 1° ECCENTRICITY BETWEEN ANY DIAMETERS ON THE SAME CENTERLINE SHALL NOT EXCEED .010 TOTAL INDICATOR READING ALL DIMENSIONS ARE FINISH DIMENSIONS INCLUDING APPLIED FINISH AND ARE GIVEN IN INCHES			SIGNAL CORPS	REVIEWED <i>PME</i>		
558-0893-003 - SMC-2490-5 SC-DL-248775		COLLINS NO.	COPY	NEXT ASSY		
APPLICATION				DATE <i>17 JAN 56</i>	SCALE <i>4/1</i>	

WHEN REFERRING TO THIS DRAWING STATE DRAWING NO., APPLICABLE ISSUE SYMBOL, IF ANY AND DATE