

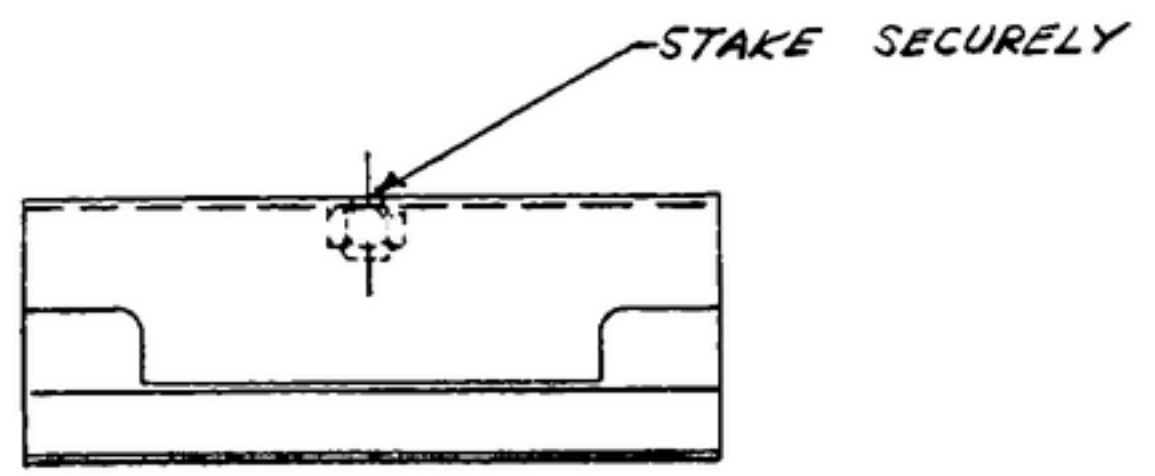
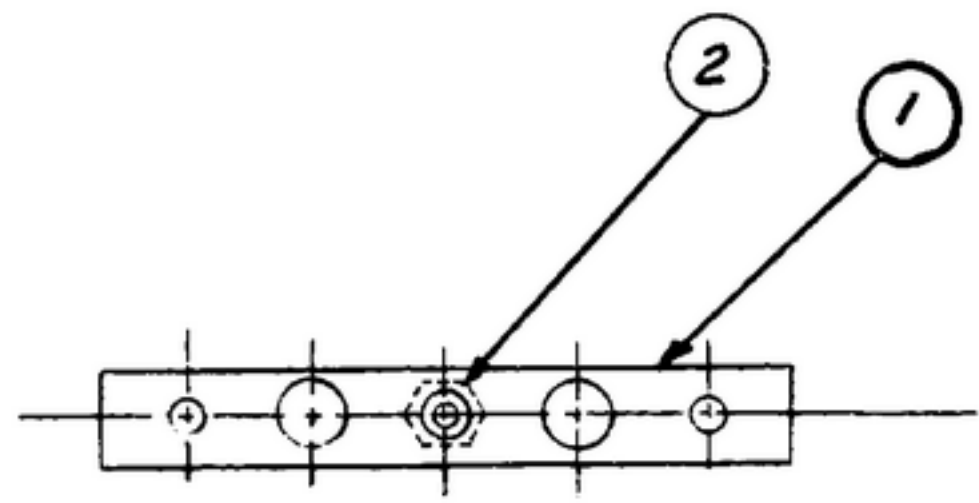
THIS IS CONNECTION WITH A DIFFERENTLY RELATED SUPPLEMENT PROCEDURE OPERATION. THE UNITED STATES GOVERNMENT THEREBY INCURS NO RESPONSIBILITY FOR ANY OBLIGATIONS WHATSOEVER AND THE FACT THAT THE GOVERNMENT HAS MADE AVAILABLE, PUBLISHED, OR IN ANY WAY SUPPLIED THE SAID DRAWINGS, SPECIFICATIONS, OR OTHER DATA IS NOT TO BE REGARDED BY IMPLICATION OR OTHERWISE AS IN ANY MANNER LICENSING THE HOLDER OR ANY OTHER PERSON OR CORPORATION, OR CONVEYING ANY RIGHTS OR PERMISSION TO MANUFACTURE, USE, OR SELL ANY PATENTED INVENTION THAT MAY IN ANY WAY BE RELATED THERETO.

AND MAY BE REPRODUCED AND USED IN CONNECTION WITH ANY GOVERNMENT PROCUREMENT OR MAINTENANCE OPERATION."

NOTE:

*FOR INFORMATION ONLY. CONTRACTOR MAY AT HIS OPTION DEVIATE FROM THESE PROCESS DETAILS

SYM	DESCRIPTION	DATE	APPROVAL
-----	-------------	------	----------



NOTE:
 1. 4-40NC-3B NUT, SELF-LOCKING CLINCH TYPE SPECIAL. AS SUPPLIED BY STANDARD PRESSED STEEL CO. JENKINTOWN, PENNSYLVANIA, OR EQUAL. FINISH: E300 PER MIL-F-14072

02P204487-4	2	1	SM-B-343605-1	NUT, SELF-LOCKING CLINCH	CRES		1
*SWE PART NO.	ITEM	REQD	PART NO.	DESCRIPTION	MATL	MATL SPEC	NOTES
	1	1	SM-B-343603	BRACKET			

LIST OF MATERIAL

UNLESS OTHERWISE SPECIFIED DIMENSIONS ARE IN INCHES TOLERANCES ON FRACTIONS DECIMALS ANGLES ± — ± — ± —				STEWART-WARNER ELECTRONICS 42428-PC-59 SIGNAL CORPS		BRACKET ASSY		DEPARTMENT OF THE ARMY SIGNAL CORPS ENGINEERING LABORATORIES FORT MONMOUTH NEW JERSEY	
				DRAWN BY <i>P. Sig</i>					
CHECKED BY <i>[Signature]</i>		APPROVED <i>PME</i>							
CHIEF DRAFTS <i>[Signature]</i>		DATE 30 OCT 59							
NEXT ASSY	USED ON	NEXT ASSY	USED ON	ENG APPROVAL <i>[Signature]</i>	SCALE 1/1			SM-B-343605	
SWE APPLICATION		APPLICATION							