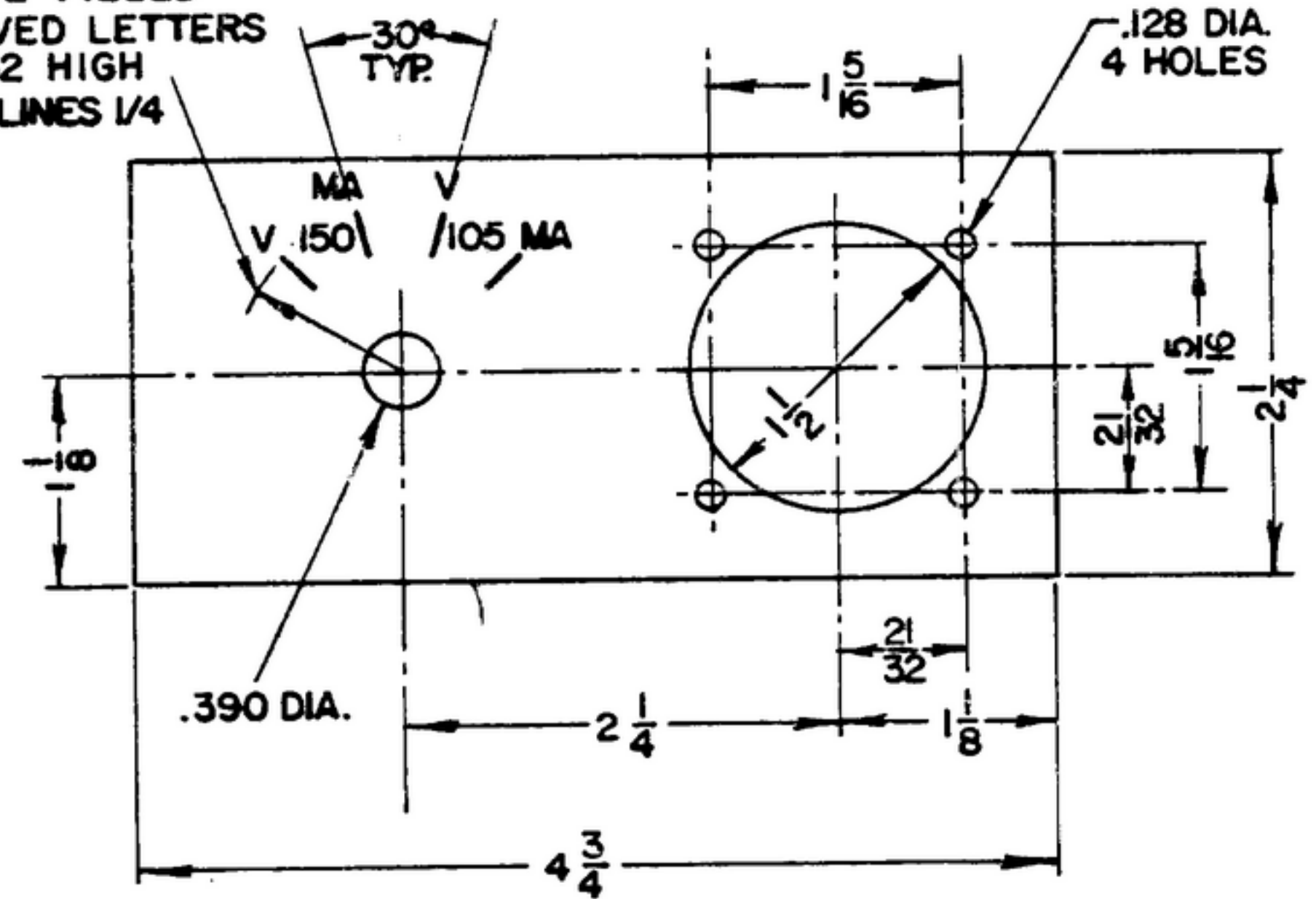


UNLESS OTHERWISE SPECIFIED, ALL DIMENSIONS ARE TO BE TAKEN FROM THE DRAWING. THE GOVERNMENT MAY HAVE FORMULATED, FURNISHED, OR IN ANY WAY SUPPLIED THE SAID DRAWINGS, SPECIFICATIONS OR OTHER DATA IS NOT TO BE REGARDED BY IMPLICATION OR OTHERWISE AS IN ANY MANNER LICENSING THE HOLDER OR ANY OTHER PERSON OR CORPORATION, OR CONVEYING ANY RIGHTS OR PERMISSION TO MANUFACTURE, USE, OR SELL ANY PATENTED INVENTION THAT MAY IN ANY WAY BE RELATED THEREBY.

THIS OPTION, DEVIATE FROM THESE DETAILS

WHITE FILLED
ENGRAVED LETTERS
5/32 HIGH
7/8 R.-LINES 1/4



ALUMINUM ALLOY 5052-H34 18GA. B & S (.040)
PER SPEC. QQ-A 318 COND 1/2 H
FINISH PER MIL-F-14072-P513-N

REQD	PART NO.	DESCRIPTION	MATL	MATL SPEC
LIST OF MATERIAL				
		PLATE		
		DEPARTMENT OF THE ARMY U. S. ARMY SIGNAL MATERIEL SUPPORT AGENCY FORT MONMOUTH NEW JERSEY		
		SM-B-400989		
		CODE 80063		

		UNLESS OTHERWISE SPECIFIED	
		DIMENSIONS ARE IN INCHES	
		TOLERANCES ON	
		FRACTIONS DECIMALS ANGLES	
		± 1/64 ± .005 ± 0°30'	
		DRAWN <i>N.J.M.</i>	
		DATE <i>27 MAY 64</i>	
		CHECKED	
		APPROVED	
SM-D-31959	SC-GL-57758		
NEXT ASSY	USED ON		
APPLICATION			

ORDER NO.
52713-PP-61

SIGNAL CORPS

REVIEWED *GEB*

APPROVED
9 JULY 64 JHR

DATE *26 MAY 64*

SCALE 1/1

WHEN REFERRING TO THIS DRAWING STATE DRAWING NO., APPLICABLE ISSUE SYMBOL, IF ANY, AND DATE.