

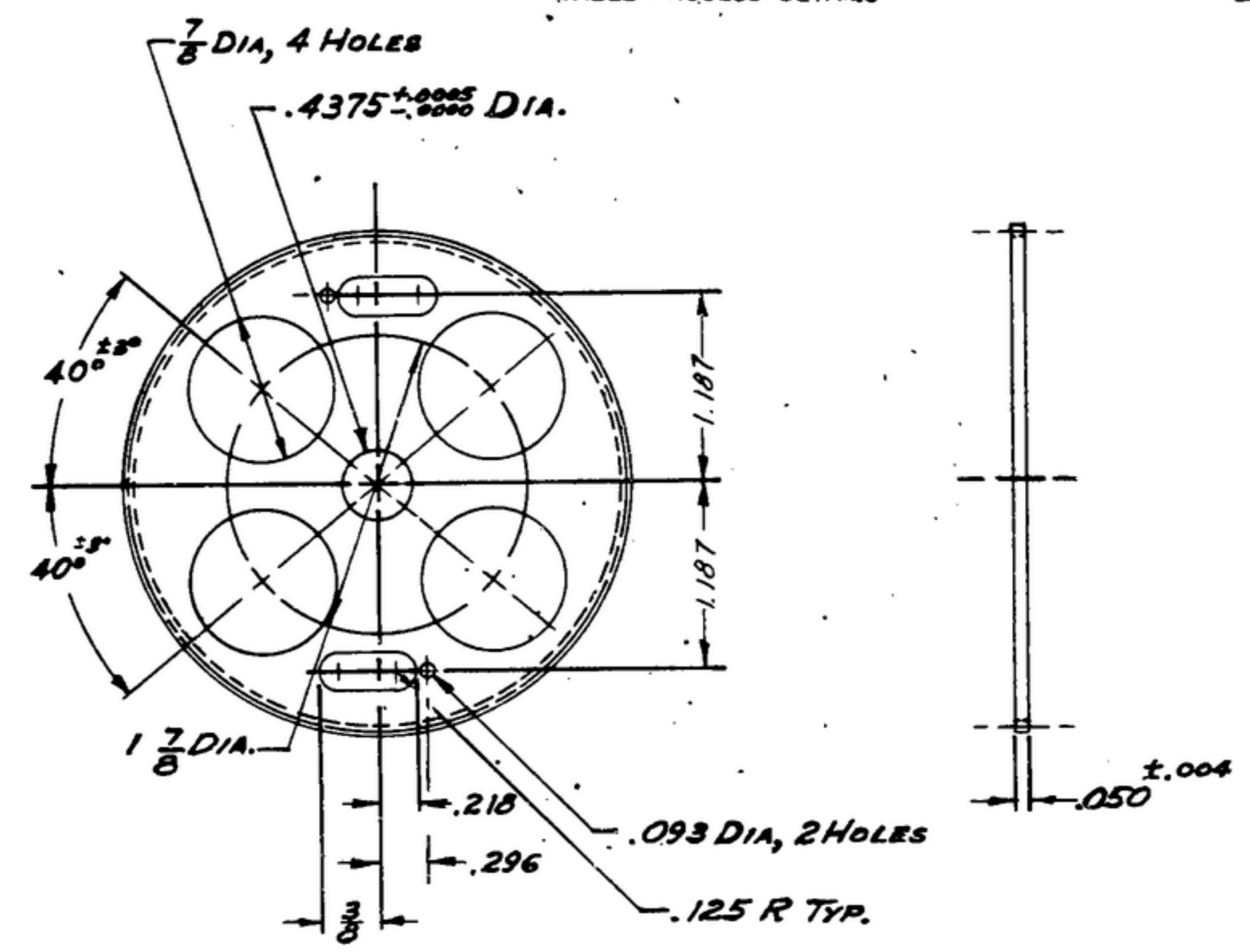
506 1019 00
506-1619-002-R-344

1.8

NOTICE: When Government drawings, specifications, or other data are used for any purpose other than in connection with a definitely related Government procurement operation, the United States Government thereby incurs no responsibility or any obligation whatsoever, and the fact that the Government may have furnished, furnished, or in any way supplied the said drawings, specifications, or other data is not to be regarded by implication or otherwise as in any manner licensing the holder or any other person or corporation, or conveying any rights or permission to manufacture, use or sell any patented invention that may in any way be related thereto.

NOTE:
*FOR INFORMATION ONLY,
CONTRACTOR MAY AT HIS
OPTION DEVIATE FROM
THESE PROCESS DETAILS

NEXT ASSEMBLY	USED ON	SWE. *	REVISIONS	DATE	APPROVAL
SM-C-179062	SC-DL-170462	APPROVAL	SYM		
SM-D-248975	SC-DL-248775	S Y M	A ₄	6 OCT. 59	42428-PC-59-A1-51 REV'D. PME
SM-D-343600					



- NOTES:
- (A₁) 1-STEEL, COMP. 302, COND ANNEALED PER SPEC. PER SPEC. MIL-S-5059.
 - (A₄) 2-NORMAL DIAMETRAL PITCH 32
THEORETICAL PITCH DIAMETER 3.125
NUMBER OF TEETH 100
PRESSURE ANGLE 20°
BACKLASH ON NORMAL PITCH CIRCLE
WHEN MATED WITH MASTER .001-.002
AMERICAN STANDARD INVOLUTE TOOTH FORM
 - 3-REMOVE ALL BURRS.
 - 4-GEAR MUST BE FLAT WITHIN .005 TIR.
 - 5-ECCENTRICITY BETWEEN PITCH & BORE SHALL NOT EXCEED .003 TIR.
 - 6-DIMENSIONS FOR SLOTS & ACCOMPANYING .093 DIA HOLES ARE TYPICAL.
 - (A₂) 7-FINISH: E 300 PER SPEC. MIL-F-14072.

UNLESS OTHERWISE SPECIFIED	AUTHENTICATION	GEAR	DEPARTMENT OF THE ARMY SIGNAL CORPS ENGINEERING LABORATORIES FORT MONMOUTH NEW JERSEY
DIMENSIONS ARE IN INCHES	DRAWN 2 LNK 2-PW- 10-53		
TOLERANCES ON FRACTIONS ± 1/64	TRACED PHOTO		
DECIMALS ± .005	CHECKED <i>Klan</i>		
ANGLES ±	VERIFIED P.D.B.R.		
COMMERCIAL TOLERANCES APPLY TO STOCK SIZES	APPROVED P.D.B.R.		
ALL SURFACES ✓	REVIEWED PME	SCALE 1/1	SM-C-179063
	DATE 22-JUN-53		

WHEN REFERRING TO THIS DRAWING STATE DRAWING NO., APPLICABLE ISSUE SYMBOL AND DATE