

FORM TYPE R300AJURR EXP. NO.

COL. 540-7488-002

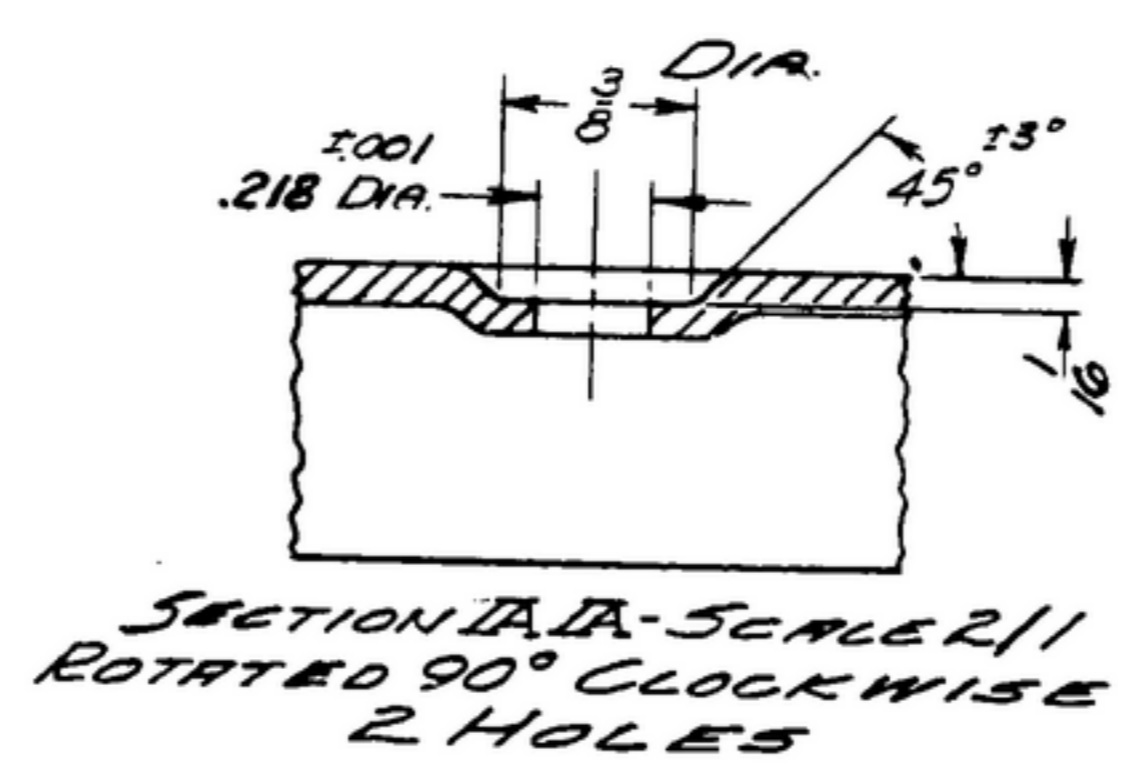
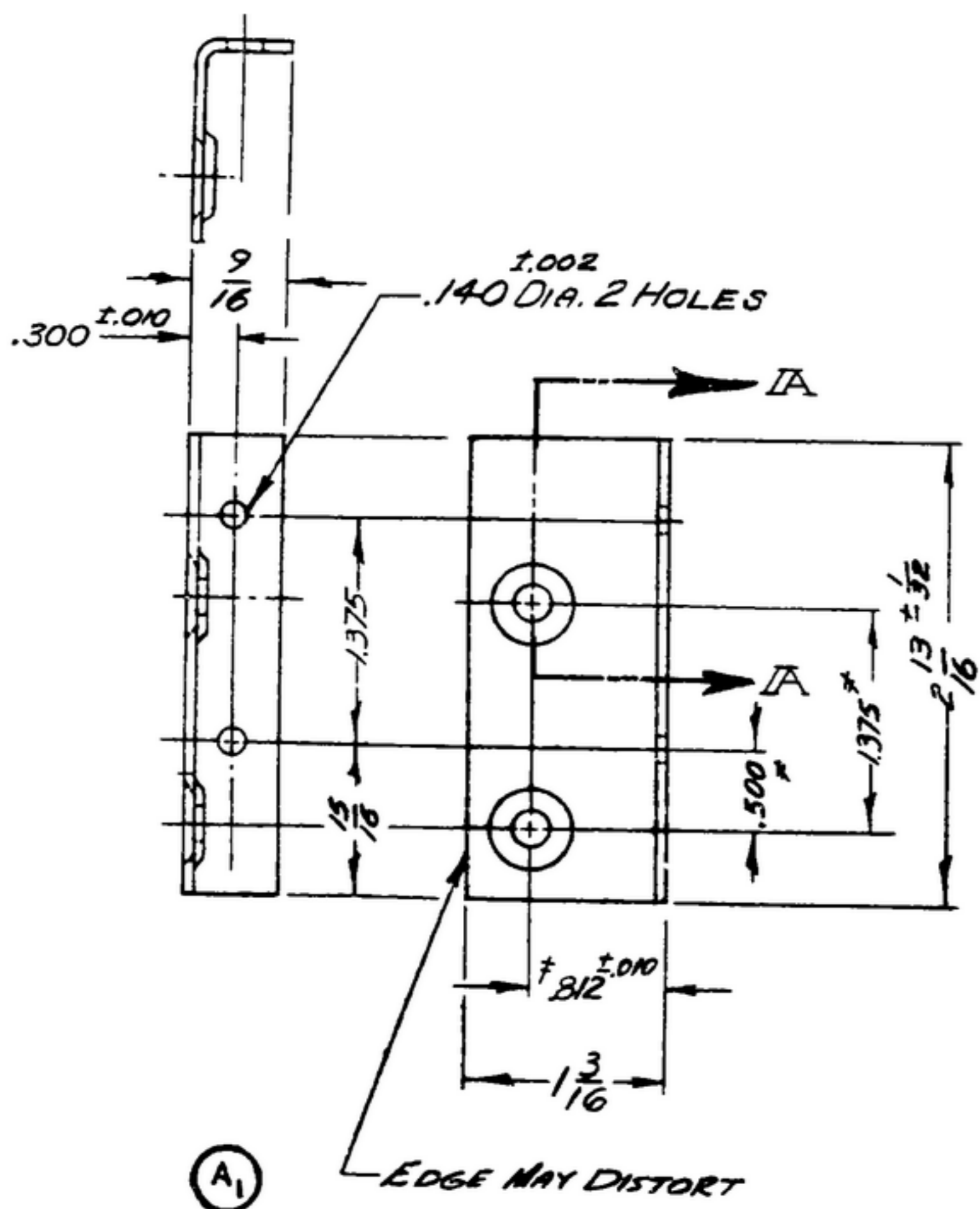
NOTICE: WHEN GOVERNMENT SPECIFICATIONS, OR OTHER DATA ARE USED FOR ANY PURPOSE OTHER THAN IN CONNECTION WITH A SPECIFICALLY RELATED GOVERNMENT PROCUREMENT OPERATION, THE UNITED STATES GOVERNMENT THEREBY ASSUMES NO RESPONSIBILITY FOR ANY CALCULATIONS OR OTHER DATA AND THE FACT THAT THE GOVERNMENT MAY HAVE FORMULATED, PURCHASED, OR IN ANY WAY SUPPLIED THE SAID SPECIFICATIONS, SPECIFICATIONS, OR OTHER DATA IS NOT TO BE REGARDED BY REPLICATING OR OTHERWISE AS AN ENDORSEMENT OR AS A WARRANTY OF MERCHANTABILITY, FITNESS FOR USE, OR OTHERWISE AS TO ANY OTHER MATTER, OR AS A GUARANTEE OF PERFORMANCE TO SATISFACTORY, ETC. OR AS WELL AS ANY PATENTED INVENTIONS THAT MAY IN ANY WAY BE RELATED THERETO.

THIS DOCUMENT HAS BEEN PURCHASED BY THE GOVERNMENT AND MAY BE REPRODUCED AND USED IN CONNECTION WITH ANY GOVERNMENT PROCUREMENT OR NONPROFIT OPERATION.

\* FOR INFORMATION ONLY. CONTRACTOR MAY AT HIS OPTION DEVIATE FROM THESE PROCESS DETAILS.

\* S.W.E. APPROVAL  
SYM PR-10042-5

REVISIONS			
SYM	DESCRIPTION	DATE	APPROVAL
A <sub>2</sub>	A <sub>1</sub> 5052 WAS 525 A <sub>2</sub> ADDED APPL SM-D-343612	9 OCT 59	A2428-FC-59 A1-51 PME



(A<sub>1</sub>) EDGE MAY DISTORT

ALUMINUM ALLOY 5052, TEMPER H32, PER SPEC. QQ-A-318, .064 THICK.  
FINISH E513 PER SPEC. MIL-F-14072.  
\* COLLINS 580-0036-00

- NOTES:  
1. ± TOLERANCE APPLIES TO HOLES. DIMPLE MAY VARY ± 1/16.  
2. INSIDE BEND RADIUS 1/16.

COLLINS PART NO.	ITEM	QTY	UNIT	PART NO.	DESCRIPTION	DATE	DATE
LIST OF MATERIAL							
COLLINS PART NO. 588-0276-003							

DRAWN <i>HENRY</i>		CHECKED <i>[Signature]</i>		APPROVED		COLLINS-RAND CO. 588-0276-003 19219-PH 51-93		DEPARTMENT OF THE ARMY SIGNAL CORPS ENGINEERING LABORATORIES FORT MONMOUTH NEW JERSEY  SM-C-248927	
UNLESS OTHERWISE SPECIFIED: DECIMAL DIMENSIONS INCLUDING HOLE SIZES MAY VARY ±.005 FRACTIONAL DIMENSIONS INCLUDING HOLE SIZES MAY VARY ±1/64 MACHINED ANGLES MAY VARY ±.1° SHEARED ANGLES MAY VARY ±.25° BROKEN ANGLES MAY VARY ±.1° ECCENTRICITY BETWEEN ANY DIAMETERS ON THE SAME CENTERLINE SHALL NOT EXCEED .010 TOTAL INDICATOR READING. ALL DIMENSIONS ARE FINISH DIMENSIONS INCLUDING APPLIED FINISH AND ARE GIVEN IN INCHES.		588-0531004		SM-D-343612		SIGNAL CORPS			
588-0531004		SM-D-248927		XOL-248715		REVIEWED <i>PME</i>			
COLLINS NO.		QTY		NEXT ASSY		USED ON			
APPLICATION		DATE 22 Dec 55		SCALE 1/1		APPROVED <i>HLV</i> <i>PME</i>			

WHEN REFERRING TO THIS DRAWING STATE DRAWING NO., APPLICABLE ISSUE SYMBOL, IF ANY, AND DATE