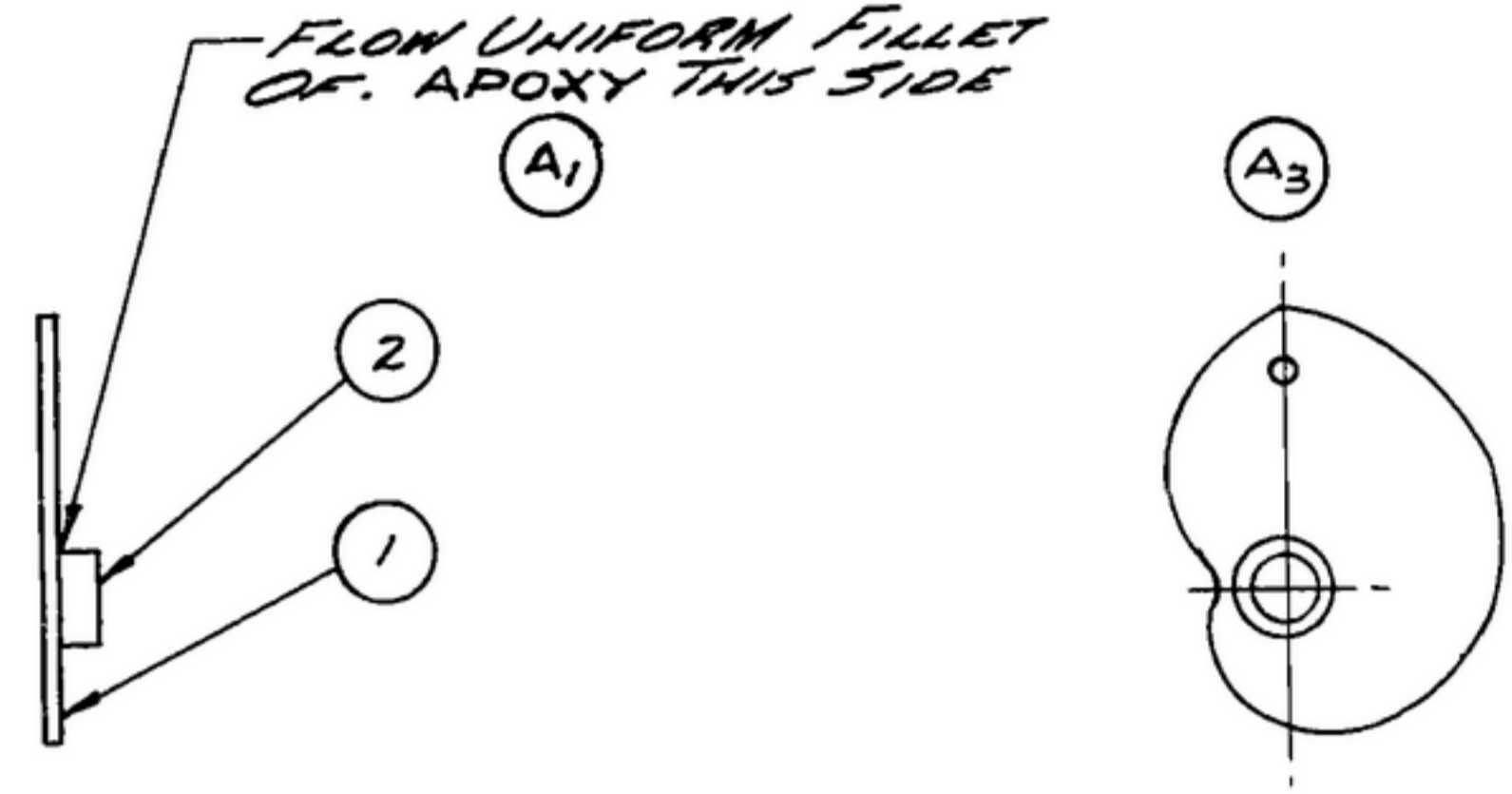


NOTICE: WHEN GOVERNMENT DRAWINGS, SPECIFICATIONS, OR OTHER DATA ARE USED FOR ANY PURPOSE OTHER THAN IN CONNECTION WITH A DEFINITELY RELATED GOVERNMENT PROCUREMENT OPERATION, THE UNITED STATES GOVERNMENT THEREBY INCURS NO RESPONSIBILITY FOR ANY OBLIGATIONS WHATSOEVER; AND THE FACT THAT THE GOVERNMENT MAY HAVE REGULATED, FURNISHED, OR IN ANY WAY SUPPLIED THE SAID DRAWINGS, SPECIFICATIONS, OR OTHER DATA IS NOT TO BE REGARDED BY IMPLICATION OR OTHERWISE AS IMPLYING WARRANTIES OR ENDORSEMENTS OR ANY OTHER FORM OF GUARANTEE, OR CONFERRING ANY RIGHTS OR PRIVILEGES TO MANUFACTURE, USE, OR SELL ANY PATENTED INVENTION THAT MAY IN ANY WAY BE RELATED THERETO.

THIS DOCUMENT HAS BEEN PURCHASED BY THE GOVERNMENT AND MAY BE REPRODUCED AND USED IN CONNECTION WITH ANY GOVERNMENT PROCUREMENT OR MAINTENANCE OPERATION.

* FOR INFORMATION ONLY. CONTRACTOR MAY AT HIS OPTION DEVIATE FROM THESE PROCESS DETAILS.

* SWE. APPROVAL		REVISIONS			
SYM	PR10042-5	SYM	DESCRIPTION	DATE	APPROVAL
X	X	A7	A1 - EPOXY WAS SOLDER; A2 - REMOVED DATA TABLE; A3 - REMOVED DIM. FROM VIEW; A4 - NOTE 2 CONTAINED COMPLETE SOLDER SPEC INFORMATION AND FLUX SUPPLIER DATA. A5 - REMOVED NOTE (CAM DIM. DATA) A6 - SWE PART NO. COLUMN WAS COLLINS PART NO'S. A7 - ITEM 1 WAS SM-B-283274.	9 OCT. 59	42428-PC-59-A1-51 REV'D. PME
		B3	B1 - WAS IIP205114 B2 - WAS IIP205113 B3 - WAS IIP205112	17 MAY 60	42428-PC-59 REV'D. PME
		C	(1) - ADDED NOTE * 4.	22 FEB 61	42428-PC-59 REV'D. PME



NOTES:

1. PRESS HUB (2) IN CAM (1) SNUG AGAINST SHOULDER & BOND WITH EPOXY.
2. BOND WITH EPOXY CONSISTING OF EPON828 (SHELL CHEMICAL CO. CHICAGO, ILL., OR EQUAL) CURING AGENT BF-3-400 (HARSHAW CHEMICAL CO. CLEVELAND, OHIO OR EQUAL) AND HEAVY GRADE TITANIUM-DIOXIDE (TITANIUM PIGMENT CORP., NATIONAL LEAD CO. N.Y., N.Y. OR EQUAL).
3. CAM MUST WITHSTAND 6 FT. LBS. TORQUE WITHOUT EPOXY JOINT FAILURE.
4. REAM I.D. OF HUB TO .2492 ± .0002 DIA. AFTER ASS'Y.

SYM	ITEM	REQD	PART NO.	DESCRIPTION	MATL	MATL SPEC	QTY
B1	20P205114	5	AS REQ'D	FILLER			2
B2	20P205113	4	AS REQ'D	ACTIVATOR			2
B3	20P205112	3	AS REQ'D	APOXY			2
A7		2	1	SM-B-283270	HUB-CAM		
A6		1	1	SM-D-178928	CAM		
LIST OF MATERIAL							

DRAWN HENRY		CHECKED [Signature]	APPROVED	COLLINS-RADIO-CO. -ORIGIN-RAPID-1000- 14214-P.H. 51-93		CAM ASSY - R.F.	DEPARTMENT OF THE ARMY SIGNAL CORPS ENGINEERING LABORATORIES FORT MONMOUTH NEW JERSEY SM-C-248972
UNLESS OTHERWISE SPECIFIED: DECIMAL DIMENSIONS INCLUDING HOLE SIZES MAY VARY ±.008 FRACTIONAL DIMENSIONS INCLUDING HOLE SIZES MAY VARY ±1/64 MACHINED ANGLES MAY VARY ±.1° SHEARED ANGLES MAY VARY ±.25° BROKEN ANGLES MAY VARY ±.1° ECCENTRICITY BETWEEN ANY DIAMETERS ON THE SAME CENTERLINE SHALL NOT EXCEED .010 TOTAL INDICATOR READING. ALL DIMENSIONS ARE FINISH DIMENSIONS INCLUDING APPLIED FINISH AND ARE GIVEN IN INCHES.		SIGNAL CORPS		REVIEWED PME			
APPLICATION		APPROVED HLY PME		DATE 29 DEC 55			
COLLINS NO. 558 0307 002		NEXT ASSY		SCALE 1/1			