

EQUIP. TYPE *R390A4URR* EXP. NO.

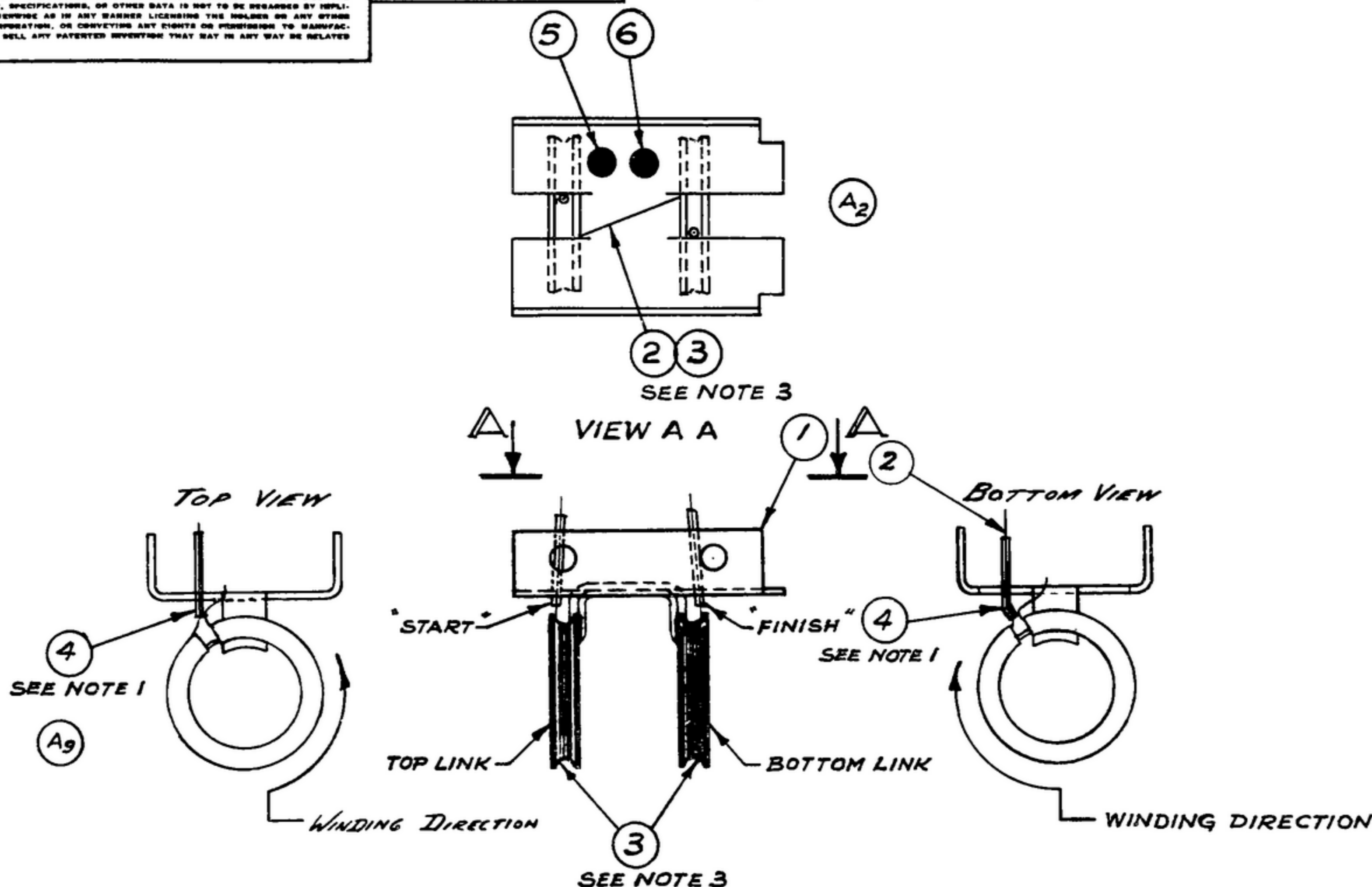
*COL. 540-7887-003*

NOTICE: WHEN GOVERNMENT DRAWINGS, SPECIFICATIONS, OR OTHER DATA ARE USED FOR ANY PURPOSE OTHER THAN IN CONNECTION WITH A DEFINITELY RELATED GOVERNMENT PROCUREMENT OPERATION, THE UNITED STATES GOVERNMENT THEREBY INCURS NO RESPONSIBILITY NOR ANY OBLIGATION WHATSOEVER; AND THE FACT THAT THE GOVERNMENT MAY HAVE FORMULATED, FURNISHED, OR IN ANY WAY SUPPLIED THE SAID DRAWINGS, SPECIFICATIONS, OR OTHER DATA IS NOT TO BE REGARDED BY IMPLICATION OR OTHERWISE AS IN ANY MANNER LICENSING THE HOLDER OR ANY OTHER PERSON OR CORPORATION, OR CONFERRING ANY RIGHTS OR PERMISSION TO MANUFACTURE, USE, OR SELL ANY PATENTED INVENTION THAT MAY IN ANY WAY BE RELATED THEREBY.

THIS DOCUMENT HAS BEEN PURCHASED BY THE GOVERNMENT AND MAY BE REPRODUCED AND USED IN CONNECTION WITH ANY GOVERNMENT PROCUREMENT OR MAINTENANCE OPERATION.

\*FOR INFORMATION ONLY. CONTRACTOR MAY AT HIS OPTION DEVIATE FROM THESE PROCESS DETAILS.

SWE APPROVAL		REVISIONS			
SYM	PR10042-17	SYM	DESCRIPTION	DATE	APPROVAL
		A <sub>10</sub>	A <sub>1</sub> -RENUMBERED NOTES; A <sub>2</sub> -ADDED VIEW "A-A", NOTATIONS & CALLOUTS; A <sub>3</sub> -ADDED ITEMS 4, 5 & 6; A <sub>4</sub> -ADDED NOTES 1, 2 & 5; A <sub>5</sub> -REWORDED NOTE 3. "PART #A27" WAS "TRANSPARENT Q MAX. NO. 27" A <sub>6</sub> -NOTE 4 WAS "SINGLE CONDUCTOR, E <sub>2</sub> SILK MAGNET #28" A <sub>7</sub> -ITEM 3, "LACQUER" WAS "COATING MATERIAL". A <sub>8</sub> -SWE. PART NO. REPLACED COLLINS PART NO. A <sub>9</sub> -ADDED VIEW OF SLEEVING. A <sub>10</sub> -IN ITEM 2 DESCRIPTION WAS "WIRE" & MAT'L SPEC "ASA C8.6 & C8.7."	16 DEC 59	42428-PC-59-A1-51 REV'D. PME
B <sub>2</sub>	CA 84674	B <sub>2</sub>	B <sub>1</sub> -ITEM 2, 14 1/4 IN, WAS 26 1/2 IN; B <sub>2</sub> -ITEM 6, WAS 205111266-3.	20 APRIL 60	42428-PC-59 REV'D. PME



WINDING DATA	
TOP LINK	4 TURNS
BOTTOM LINK	3 TURNS

- NOTES: (A<sub>1</sub>)
- (A<sub>4</sub>) 1. ALLOWING 1/2 INCHES FOR LEAD LENGTHS, INSERT 1/2 INCH SLEEVING UP TO "START" OF WINDING, AND WIND REQUIRED NUMBER OF TURNS ON TOP & BOTTOM LINKS.
  - (A<sub>4</sub>) 2. INSERT 5/8 INCH SLEEVING UP TO FINISH OF WINDING & ANCHOR BOTH LEADS TO BRACKET.
  - (A<sub>5</sub>) 3. APPLY COATING MATERIAL ITEM 3 AS SUPPLIED BY COMMUNICATIONS PRODUCTS CO., MARLBORO NEW JERSEY PART #A-27 WITH FUNGICIDE OR EQUAL, TO HOLD WINDING IN PLACE.
  - (A<sub>6</sub>) 4. SINGLE CONDUCTOR, SINGLE SILK, HEAVY POLYURETHANE #28 AWG MAGNET WIRE.
  - (A<sub>4</sub>) 5. APPLY COLOR CODING LACQUERS (ITEM 5 & 6) LOCATED AS SHOWN.

SYM	ITEM	REQ'D	PART NO.	DESCRIPTION	MATL	MATL SPEC	
(B <sub>2</sub> )	20S111266-4	6	AS REQ'D	LACQUER, OR CODING	TT-L-31	5	
(A <sub>3</sub> )	20S111266-1	5	AS REQ'D	LACQUER, BLACK CODING	TT-L-31	5	
(A <sub>7</sub> )	4	1	SM-B-249214	SLEEVING, SILICONE 1 1/8 IN.		1 & 2	
(A <sub>7</sub> )	20S110664-5	3	AS REQ'D	LACQUER		3	
(B <sub>1</sub> )	30S150219-28	2	1	SM-C-249081-1 WIRE MAGNET 14 1/4 IN	MIL-W-583	4	
(A <sub>10</sub> )	1	1	SM-C-249078	LINK ASSY			
(A <sub>8</sub> )	SWE. PART NO.	ITEM	REQ'D	PART NO.	DESCRIPTION	MATL	MATL SPEC

LIST OF MATERIAL - COLLINS PART NO. *558-0432-003*

DRAWN HENRY				CHECKED <i>hm</i>	APPROVED	COLLINS-RADIO-CO. -CEDAR RAPIDS, IOWA 14214-P.H 51-93		DEPARTMENT OF THE ARMY SIGNAL CORPS ENGINEERING LABORATORIES	
UNLESS OTHERWISE SPECIFIED: DECIMAL DIMENSIONS INCLUDING HOLE SIZES MAY VARY ±.008 FRACTIONAL DIMENSIONS INCLUDING HOLE SIZES MAY VARY ±1/64 MACHINED ANGLES MAY VARY ±1° SHEARED ANGLES MAY VARY ±.25° BROKEN ANGLES MAY VARY ±1° ECCENTRICITY BETWEEN ANY DIAMETERS ON THE SAME CENTERLINE SHALL NOT EXCEED .010 TOTAL INDICATOR READING. ALL DIMENSIONS ARE FINISH DIMENSIONS INCLUDING APPLIED FINISH AND ARE GIVEN IN INCHES.				SIGNAL CORPS		REVIEWED PME		FORT MONMOUTH NEW JERSEY	
558-0419-002				1		SM-B-249068		SC-DL-248775	
APPLICATION				DATE 29 Dec 55		SCALE 2/11		SM-C-249081	