

NOTICE: WHEN GOVERNMENT DRAWINGS, SPECIFICATIONS, OR OTHER DATA ARE USED FOR ANY PURPOSE OTHER THAN IN CONNECTION WITH A DEFINITELY RELATED GOVERNMENT PROCUREMENT OPERATION, THE UNITED STATES GOVERNMENT THEREBY INCURS NO RESPONSIBILITY FOR ANY OBLIGATION WHATSOEVER AND THE FACT THAT THE GOVERNMENT HAS FORMULATED, PROMULGATED, OR IN ANY WAY SUPPLIED THE SAID DRAWINGS, SPECIFICATIONS, OR OTHER DATA IS NOT TO BE REGARDED BY IMPLICATION OR OTHERWISE AS IN ANY MANNER LICENSING THE HOLDER OR ANY OTHER PERSON OR CORPORATION, OR CONFERRING ANY RIGHTS OR PERMISSIONS TO MANUFACTURE, USE, OR SELL ANY PATENTED INVENTION THAT MAY IN ANY WAY BE RELATED THERETO.

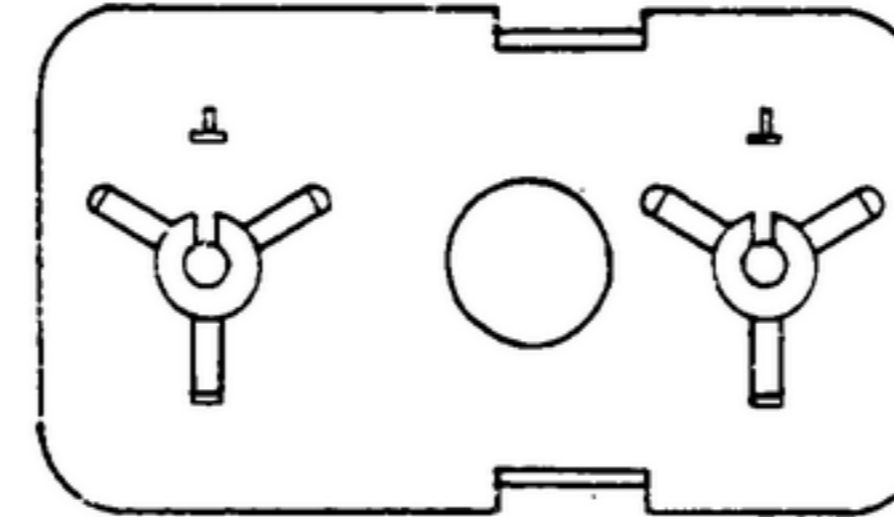
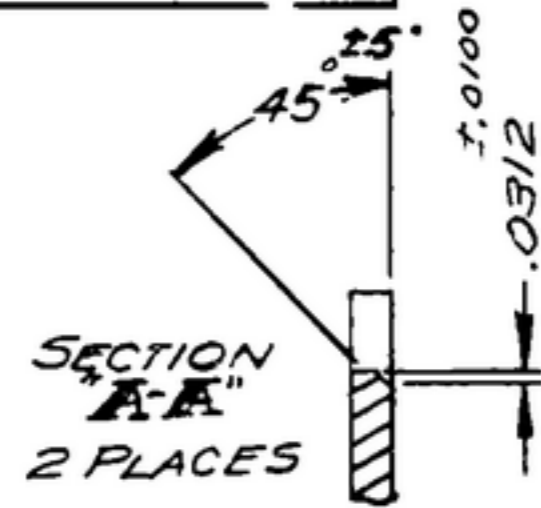
THIS DOCUMENT HAS BEEN PURCHASED BY THE GOVERNMENT AND MAY BE REPRODUCED AND USED IN CONNECTION WITH ANY GOVERNMENT PROCUREMENT OR MAINTENANCE OPERATION.

* FOR INFORMATION ONLY. CONTRACTOR MAY AT HIS OPTION DEVIATE FROM THESE PROCESS DETAILS.

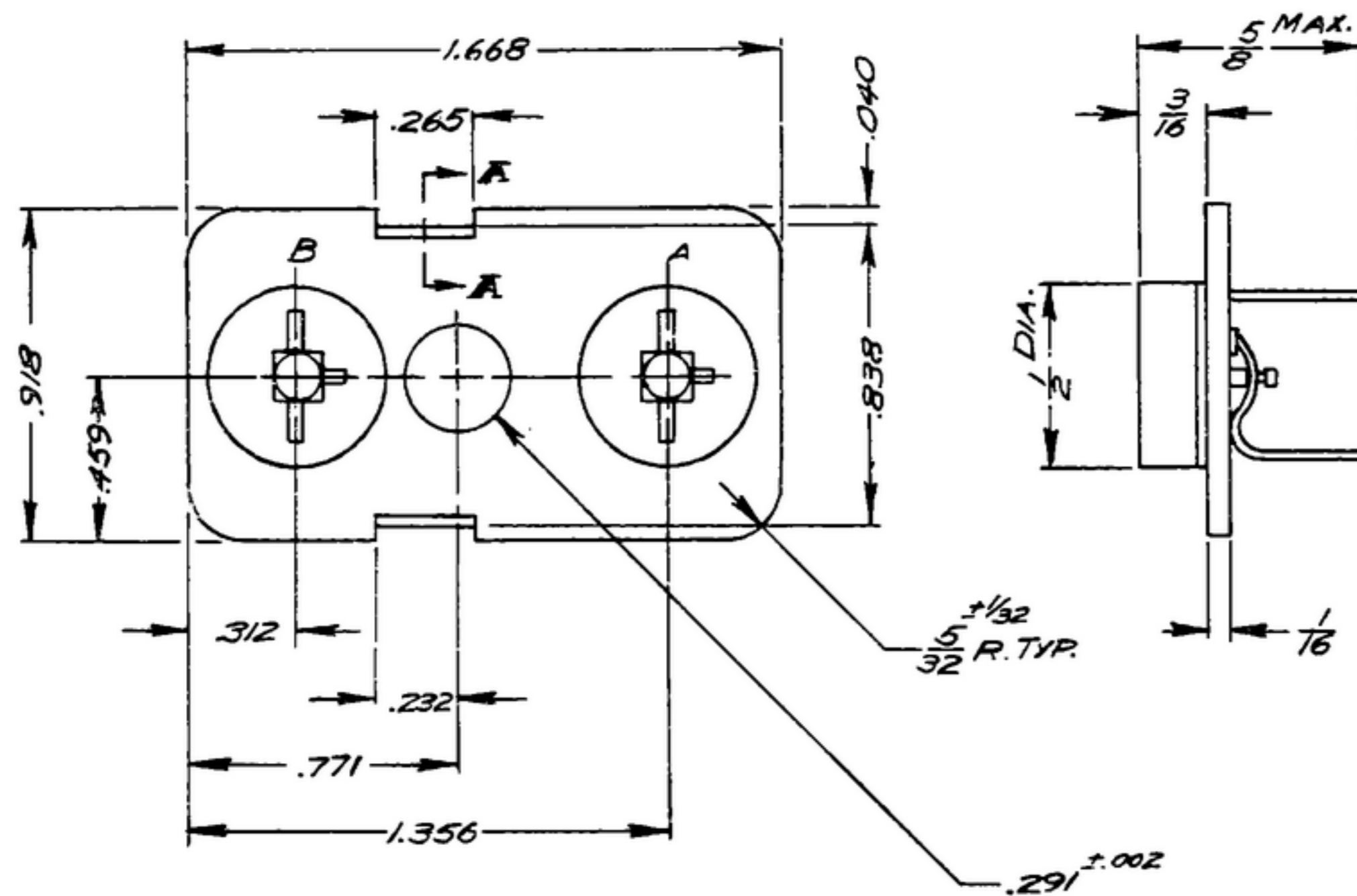
X SWE APPROVAL
SYM PRI0042-12

REVISIONS

SYM	DESCRIPTION	DATE	APPROVAL
A ₃	A ₁ IN MATERIAL NOTE: DELETE "RUBBER-SILICONE" GRADE 810 WAS 782 A ₂ ADD TEMP. COEFF. - NOTE A ₃ IN TABLE ADD ERIE PART NO.	17 NOV 59	4242B-PC 59-A1-51 REV'D PME



REAR VIEW



ERIE PART NO.	COLLINS PART NO.	DASH NO.	SECTION A				SECTION B			
			CAPACITY	UUF	TEMP	COEF.	CAPACITY	UUF	TEMP	COEF.
3187 ITEM 1	559 040005	SM-C-28329-1	3.0	12.0	18.0	ZERO	5.0	12.0	18.0	ZERO
3187 ITEM 2	559 040503	-2					5.0	25.0	37.5	
3187 ITEM 3	559 041003	-3					8.0	50.0	75.0	
3187 ITEM 4	559 041103	-4					1.5	7.0	10.5	

NOTES:

- PART MAY BE TYPE 3187, SUPPLIED BY ERIE RESISTOR CORP., ERIE, PA., OR EQUAL PROVIDING IT MEETS THE FOLLOWING REQUIREMENTS AND DIMENSIONS SHOWN.

DESCRIPTION: SINGLE PHENOLIC BOARD WITH 2 VARIABLE CERAMIC CAPACITORS MOUNTED THEREON.
WORKING VOLTAGE: 950 VOLTS DC.
FLASH TEST: 700 VOLTS DC.
INITIAL Q FACTOR AT 1 MC: 500 MINIMUM.
INITIAL LEAKAGE RESISTANCE: 10,000 MEGOHM, MIN.
MOISTURE RESISTANCE: CAPACITORS SHALL WITHSTAND TESTS PER SPEG MIL-C-81.

MATERIAL: PHENOLIC-PANELYTE GRADE 810, AS SUPPLIED BY ST. REGIS PAPER CO., PANELYTE DIV., RICHMOND, IND., OR EQUAL.

- CENTER SHAFT SHALL HAVE A SCREWDRIVER SLOT PARALLEL ($\pm 20^\circ$) TO SLOT IN CERAMIC AND SHALL BE SOLDERED TO THE ROTOR. CONTACTS SHALL BE ORIENTED AS SHOWN.
- TEMPERATURE COEFFICIENT AND CAPACITANCE DRIFT PER MIL-C-81

COLLINS PART NO.	ITEM	QTY	PART NO.	DESCRIPTION	DATE	DATE SPEC
LIST OF MATERIAL						
COLLINS PART NO. 559 0411 003						

558 0442 004	1	SM-D-249081							
558 0441 004	1	SM-D-249080							
558 0440 004	1	SM-D-249079							
558 0439 004	1	SM-D-249088							
558 0438 004	1	SM-D-249087							
558 0437 004	1	SM-D-249086	SC-DL-248775						

COLLINS NO. ST. NEXT ASSY USED ON

APPLICATION

UNLESS OTHERWISE SPECIFIED:
 DECIMAL DIMENSIONS INCLUDING HOLE SIZES MAY VARY $\pm .003$
 FRACTIONAL DIMENSIONS INCLUDING HOLE SIZES MAY VARY $\pm 1/64$
 MACHINED ANGLES MAY VARY $\pm 1^\circ$
 SHEARED ANGLES MAY VARY $\pm .28^\circ$
 BROKEN ANGLES MAY VARY $\pm 1^\circ$
 ECCENTRICITY BETWEEN ANY DIAMETERS ON THE SAME CENTERLINE SHALL NOT EXCEED .010 TOTAL INDICATOR READING.
 ALL DIMENSIONS ARE FINISH DIMENSIONS INCLUDING APPLIED FINISH AND ARE GIVEN IN INCHES.

COLLINS-RADIO CO.
 14214-PH-51-93

SIGNAL CORPS
 CAPACITOR-VARIABLE

REVIEWED PME
 APPROVED HLY
 PME

DATE 7 FEB 56 SCALE 2/1

DEPARTMENT OF THE ARMY
 SIGNAL CORPS ENGINEERING
 LABORATORIES
 FORT MONMOUTH NEW JERSEY
 SM-C-283229