

NOTICE: WHEN GOVERNMENT DRAWINGS, SPECIFICATIONS, OR OTHER DATA ARE USED FOR ANY PURPOSE OTHER THAN IN CONNECTION WITH A DEFINITELY RELATED GOVERNMENT PROCUREMENT OPERATION...

THIS DOCUMENT HAS BEEN PURCHASED BY THE GOVERNMENT AND MAY BE REPRODUCED AND USED IN CONNECTION WITH ANY GOVERNMENT PROCUREMENT OR MANUFACTURING OPERATION.

FOR INFORMATION ONLY. CONTRACTOR MAY AT HIS OPTION DEVIATE FROM THESE PROCESS DETAILS.

Table with columns: # SWE APPROVAL, SYM, DESCRIPTION, DATE, APPROVAL. Contains revision history for notes A, B, C, and D1.

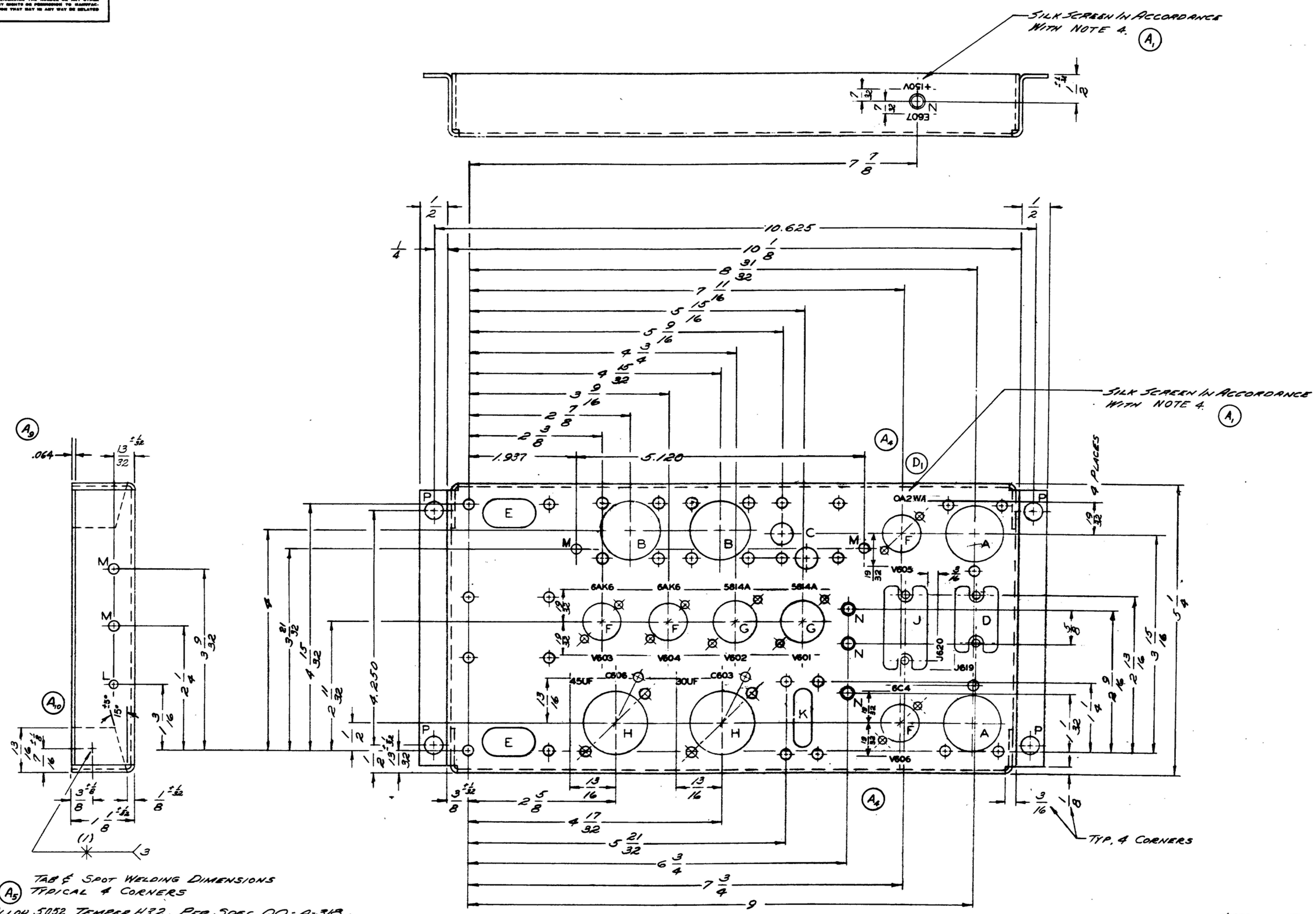


TABLE OF SPOT WELDING DIMENSIONS TYPICAL 4 CORNERS

ALUMINUM ALLOY 5052 TEMPER H32, PER SPEC QQ-A-313, FINISH: E513 PER SPEC MIL-F-14072 * COLLINS 580-0036-00

- NOTES: 1. PART SHALL BE FREE OF BURRS AND SHARP EDGES. 2. INSIDE BEND RADII NOT TO EXCEED 5/64. 3. WELDING SHALL BE IN ACCORDANCE WITH SPEC MIL-W-6858. 4. SILK SCREEN CHARACTERS TO BE 3/32 HIGH GOTHIC TYPE PER SPEC MIL-M-13231, GROUP II. 5. RELIEF RADII OPTIONAL.

WHEN PART NUMBER APPEARS AS 558-0330-003 MILITARY SOURCE INSPECTION IS REQUIRED

Table with columns: COLLINS PART NO., QTY, NEXT ASSY, USED ON, DESCRIPTION, DATE, DATE SPEC. Lists materials for the chassis.

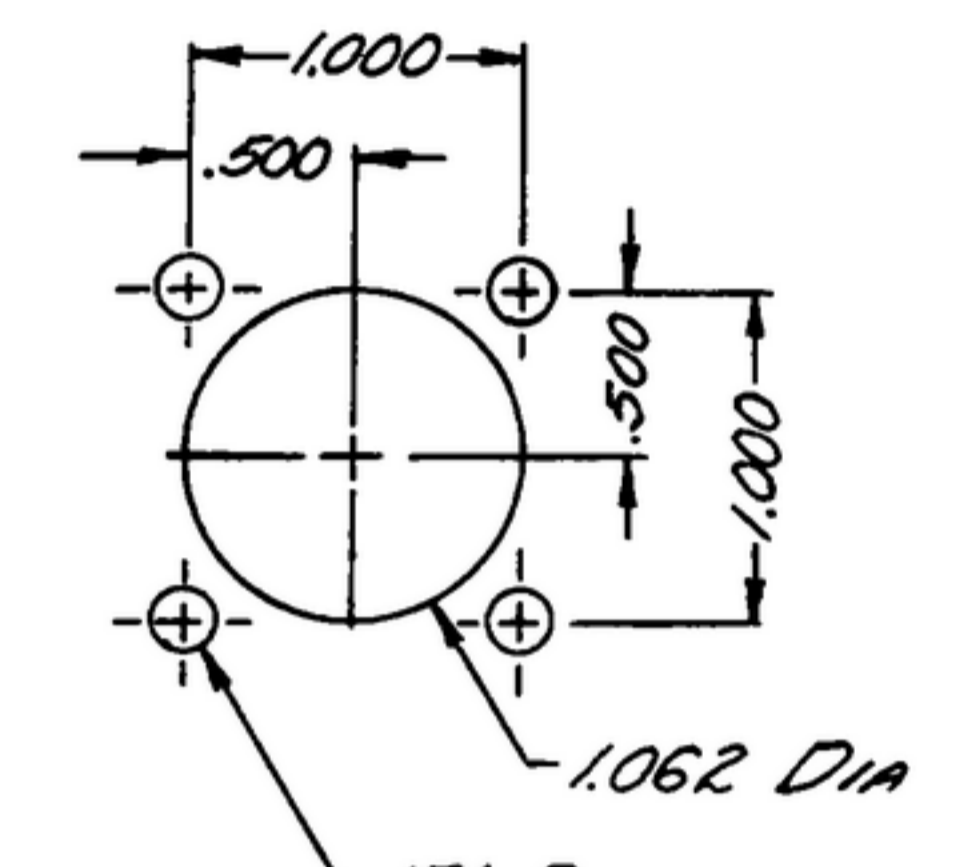
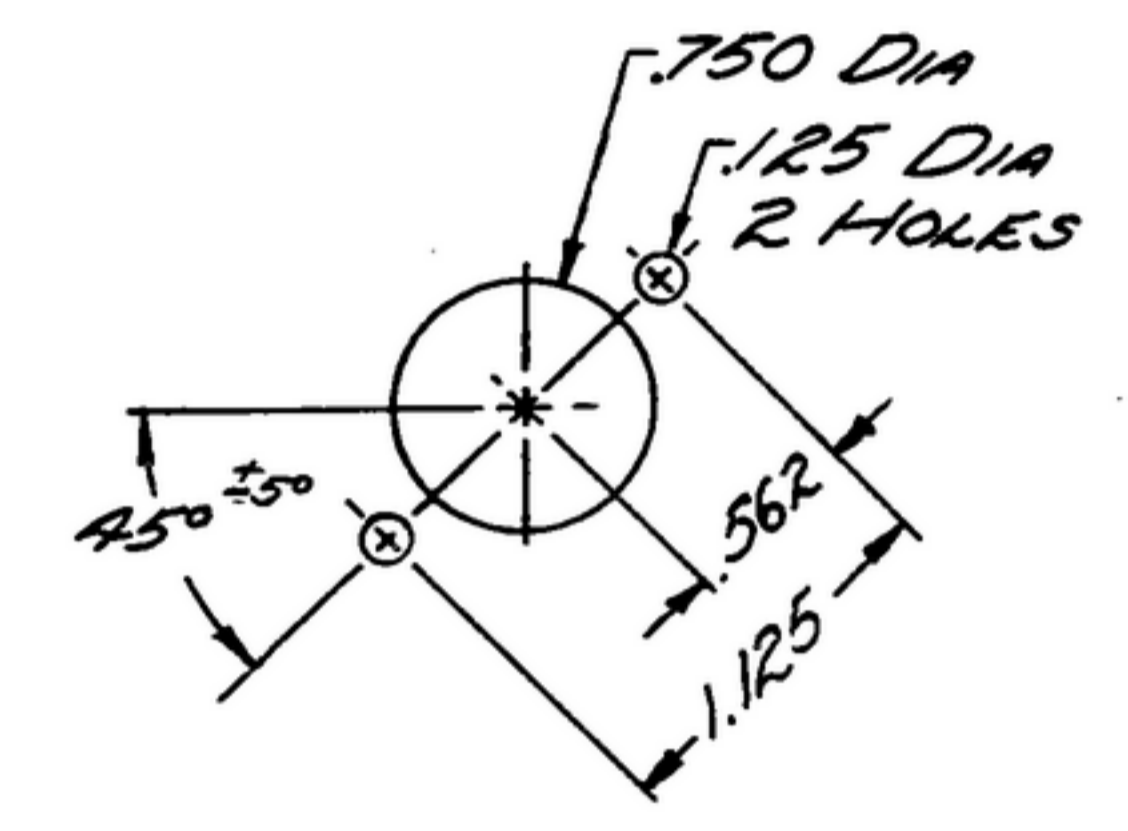
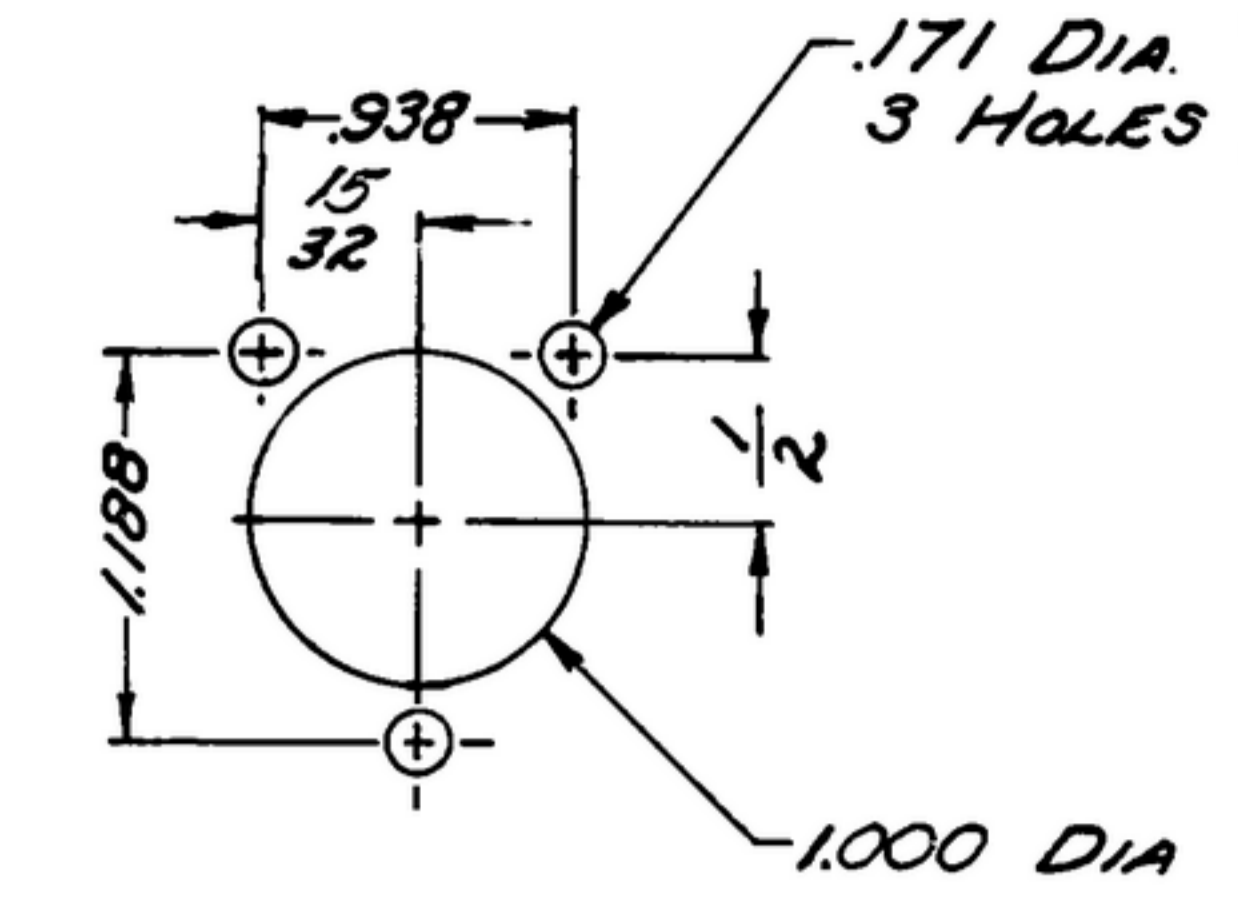
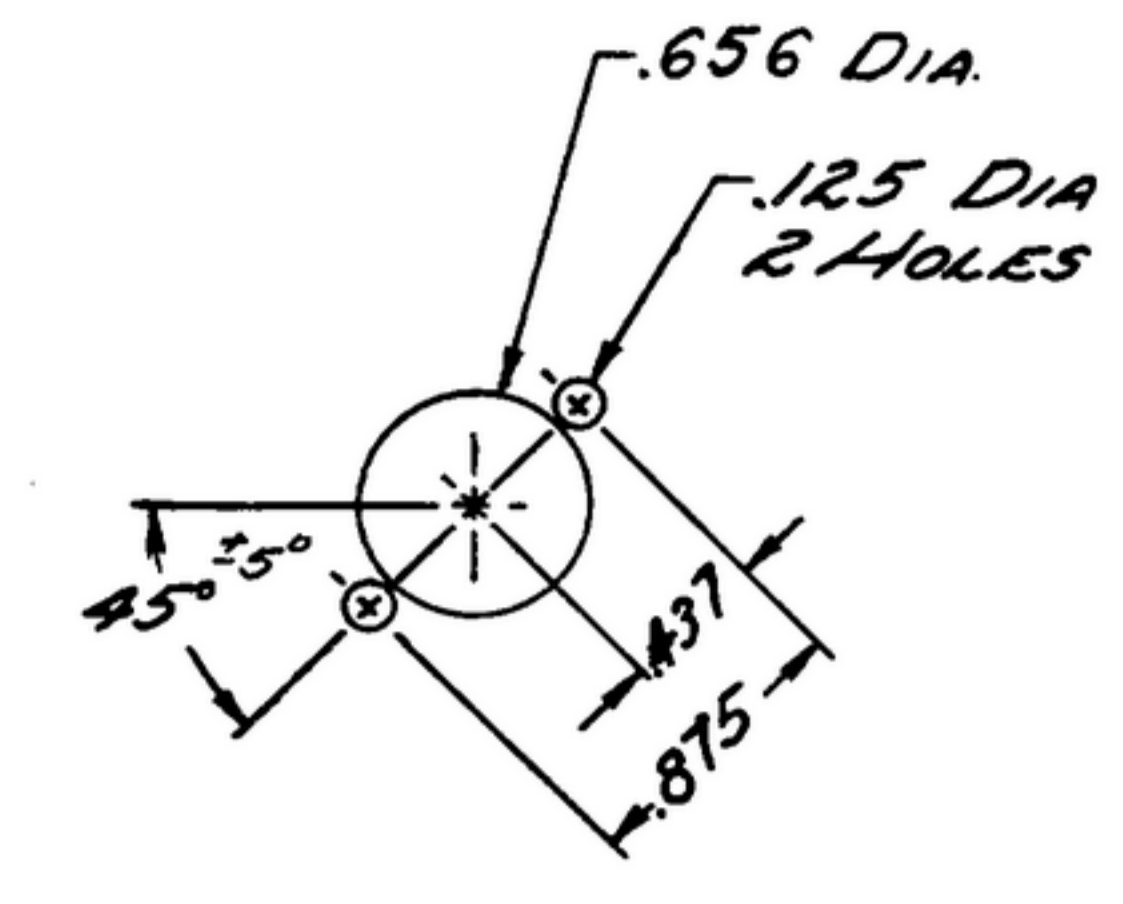
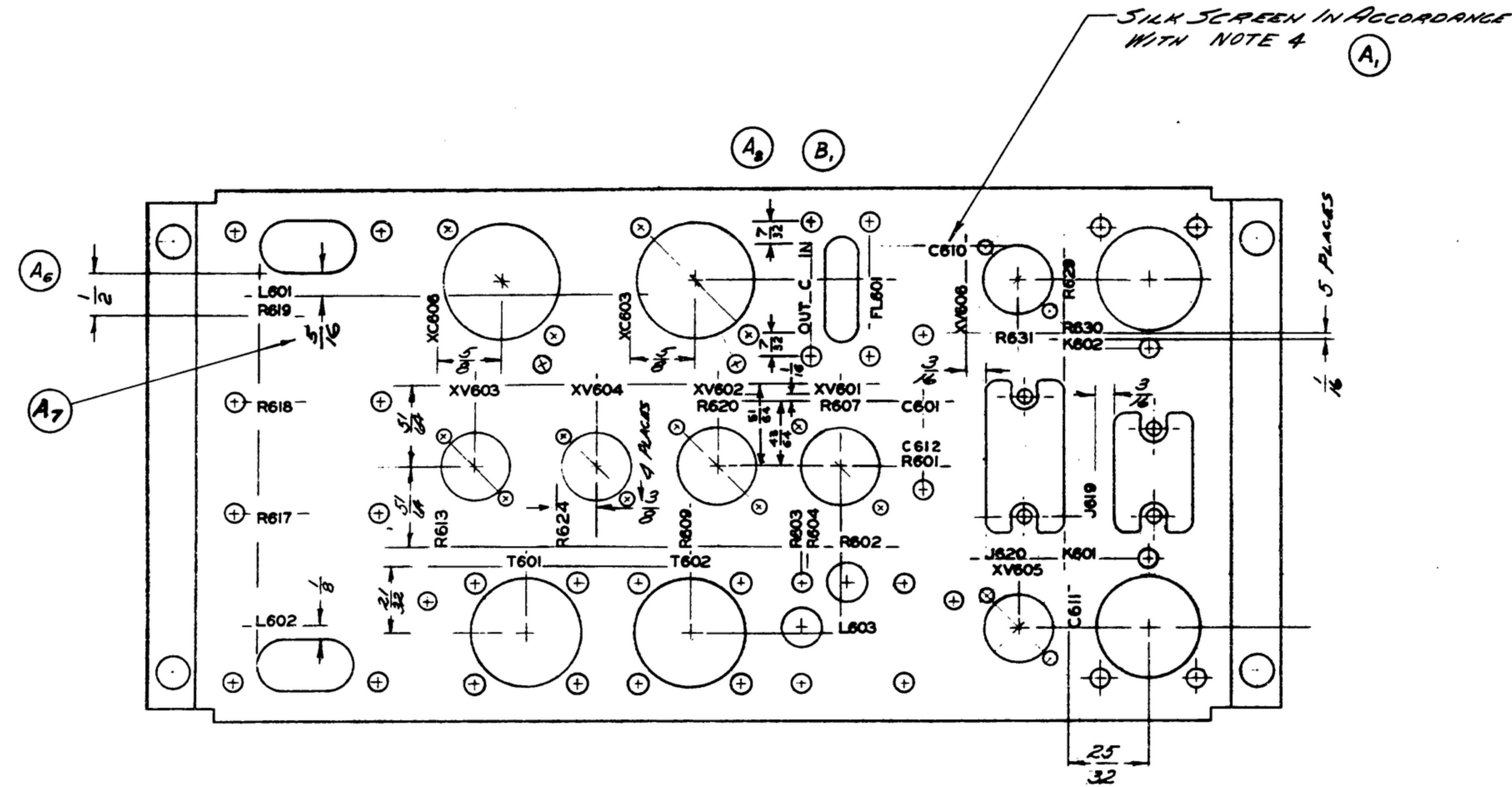
Form containing drawing metadata: DRAWN (RDG), CHECKED (Rhm), APPROVED, SIGNAL CORPS, REVIEWED (PME), APPROVED (HLY, PME), DATE (29 DEC 1955), SCALE (1/1), DEPARTMENT OF THE ARMY, SIGNAL CORPS ENGINEERING LABORATORIES, FORT MONMOUTH, NEW JERSEY, SM-D-248990, SHEET 1 OF 2 SHEETS.

NOTICE: WHEN GOVERNMENT SPECIFICATIONS, NO OTHER DATA ARE USED FOR ANY PORTION OTHER THAN IN CONNECTION WITH A SPECIFICALLY RELATED OPERATIONAL PROCEDURE OR OPERATION, THE UNITED STATES GOVERNMENT TAKES NO RESPONSIBILITY FOR ANY OPERATIONAL PROCEDURE OR OPERATION WHICH MAY BE FORMULATED, PUBLISHED, OR IN ANY WAY SUPPLIED BY THE GOVERNMENT OR ANY OTHER PARTY. THE USER IS ADVISED THAT THE GOVERNMENT MAKES NO WARRANTY, SPECIFICATION, OR OTHER DATA IN CONNECTION WITH ANY OPERATIONAL PROCEDURE OR OPERATION, OR CONVEYING ANY RIGHTS OR PERMISSION TO MANUFACTURE, USE, OR SELL ANY PATENTED INVENTION THAT MAY IN ANY WAY BE RELATED THERETO.

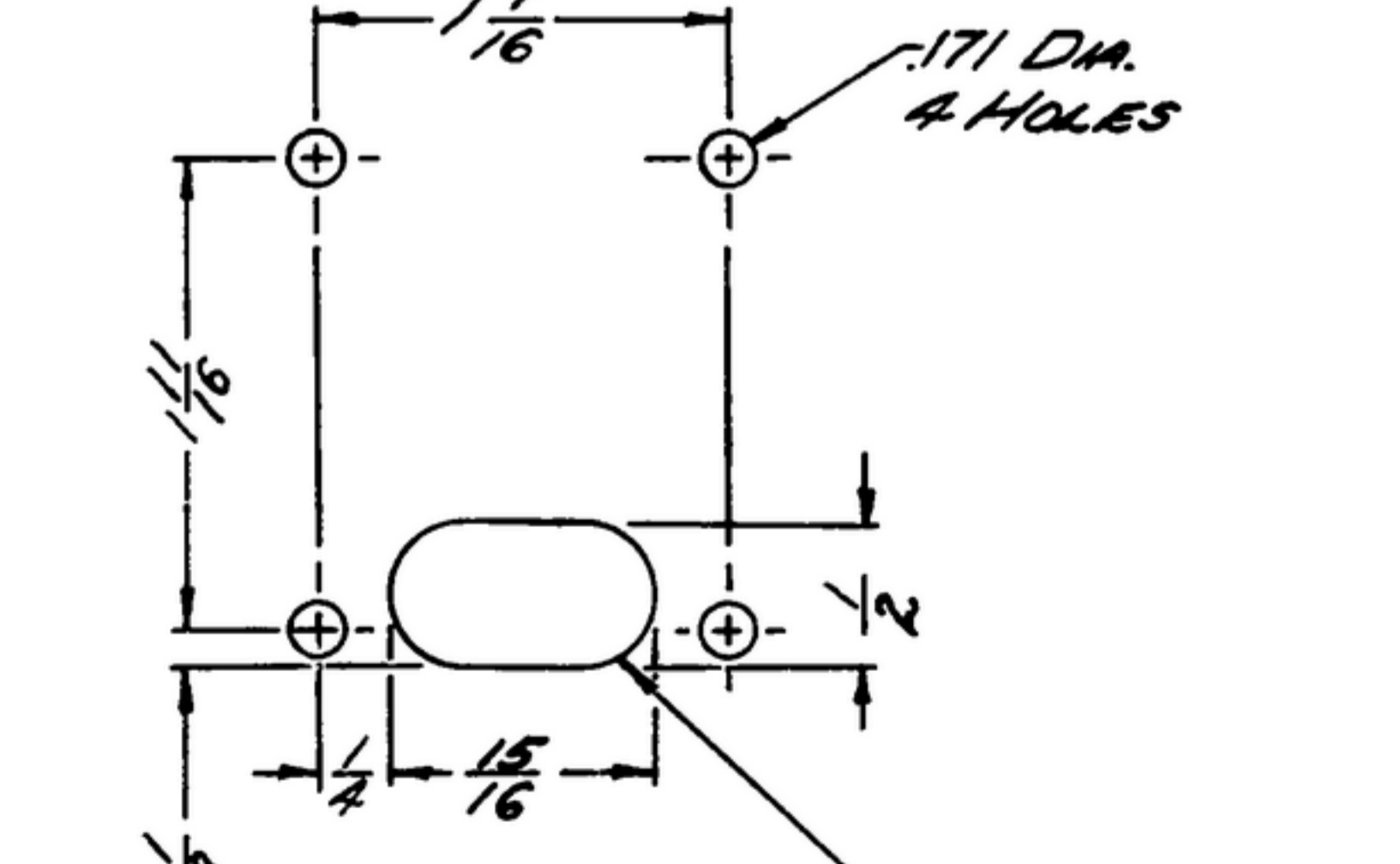
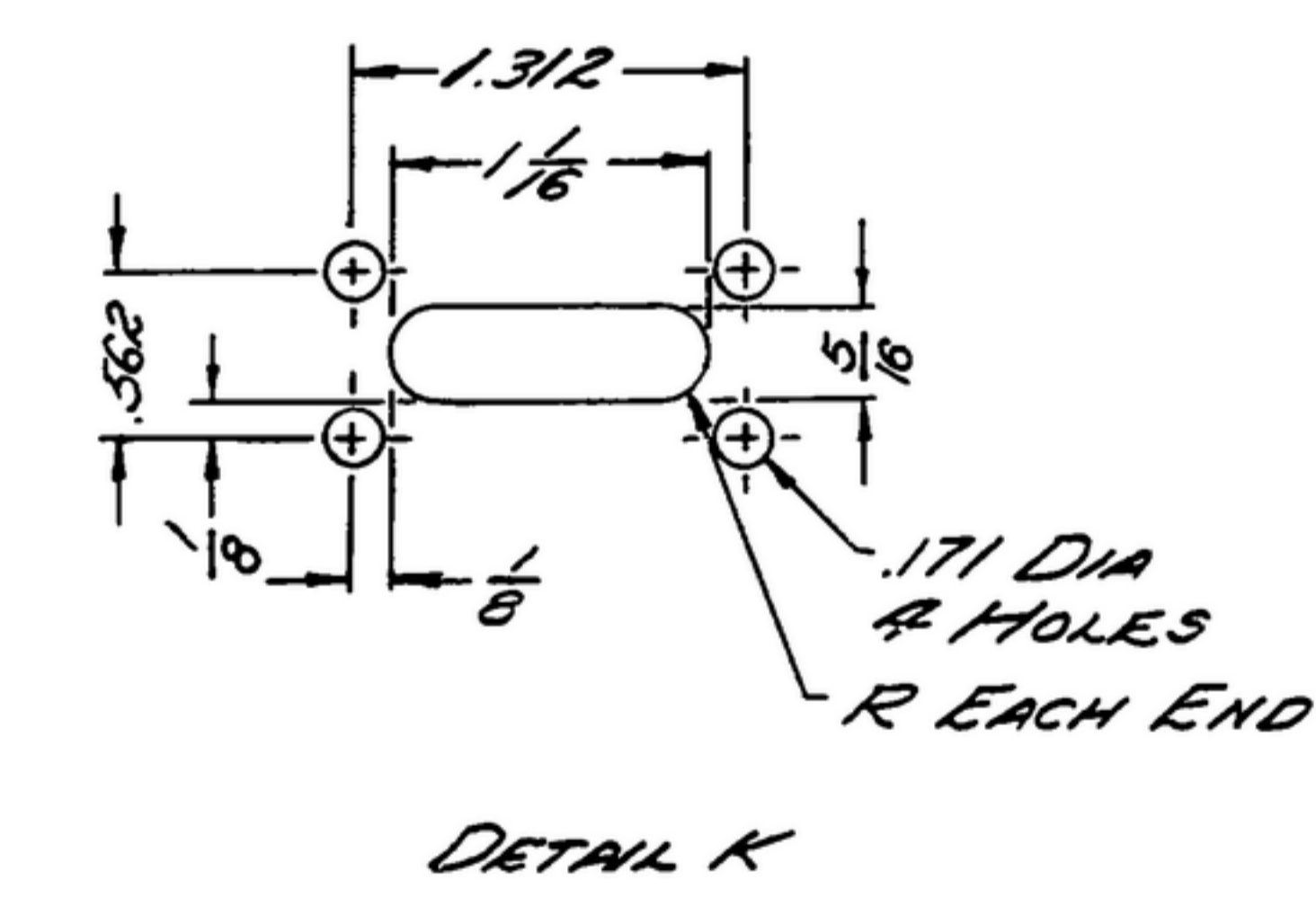
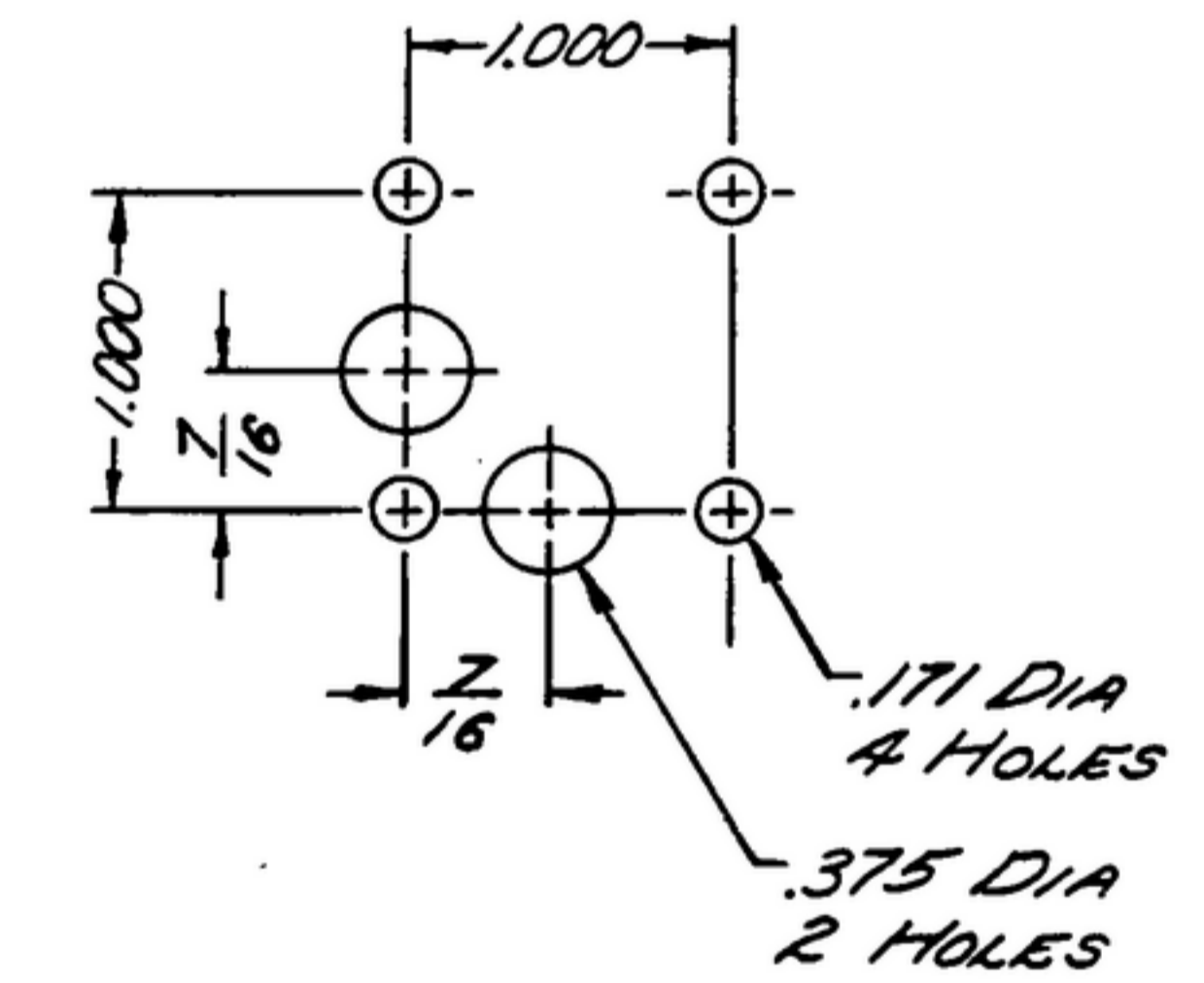
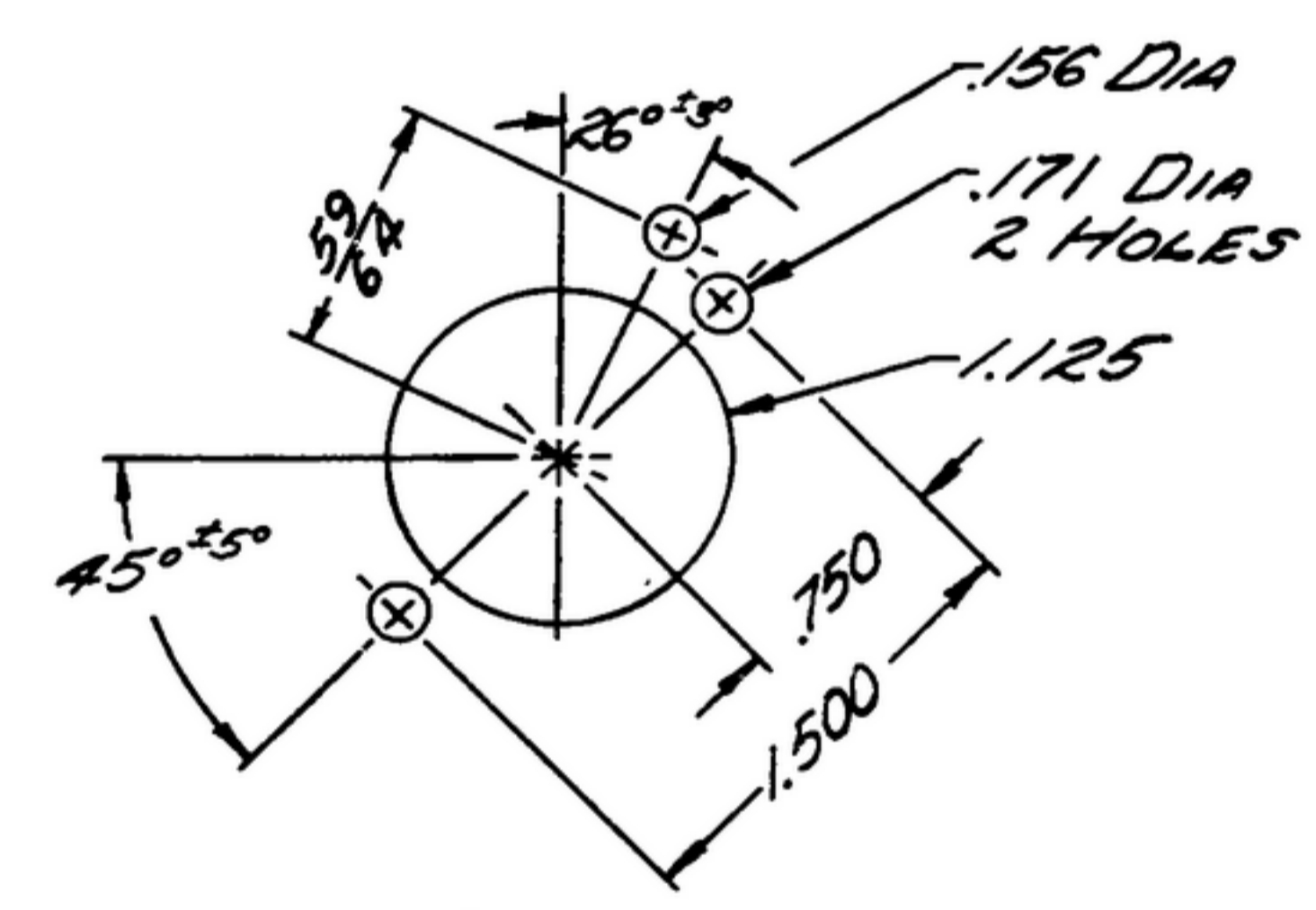
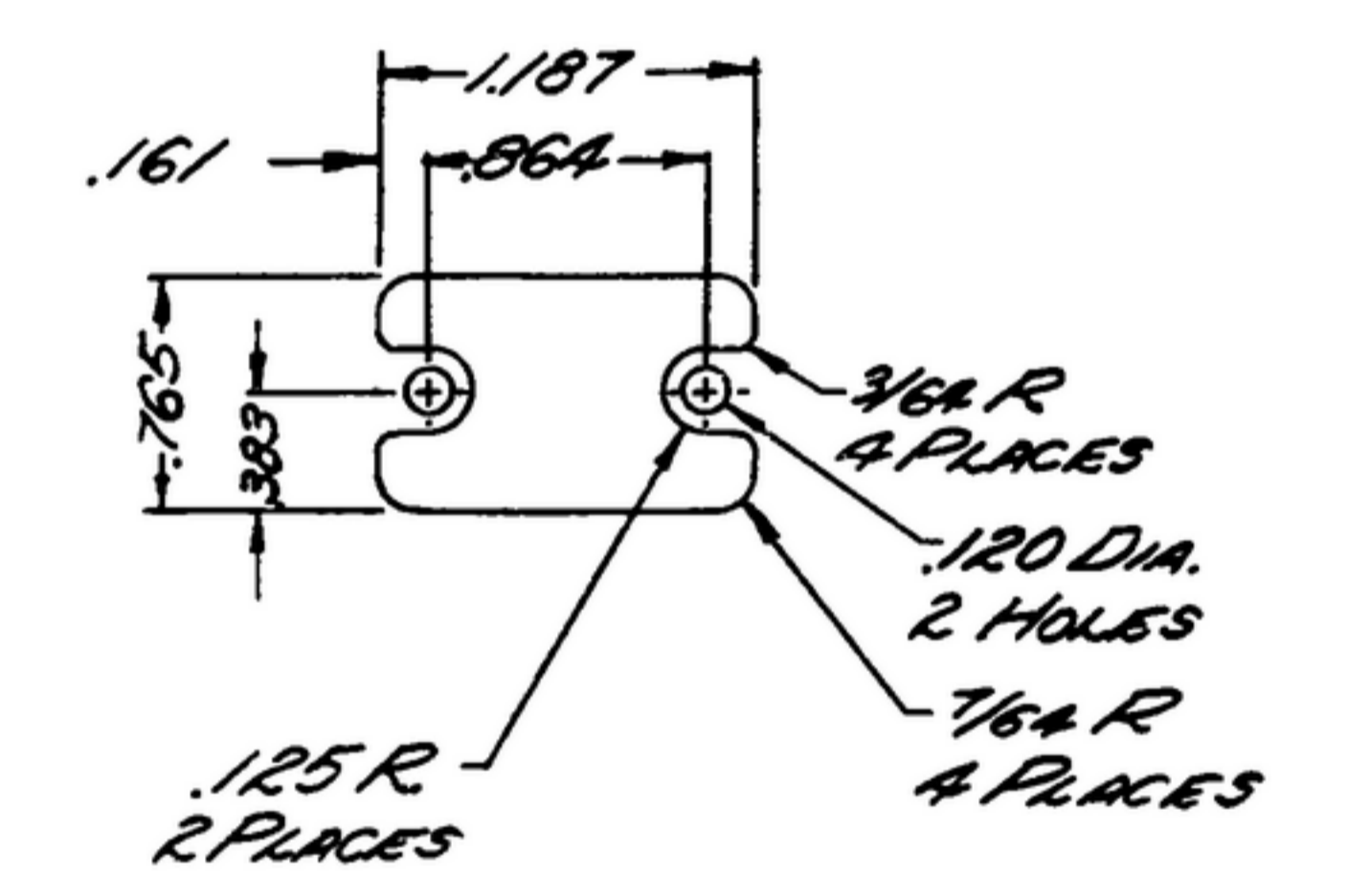
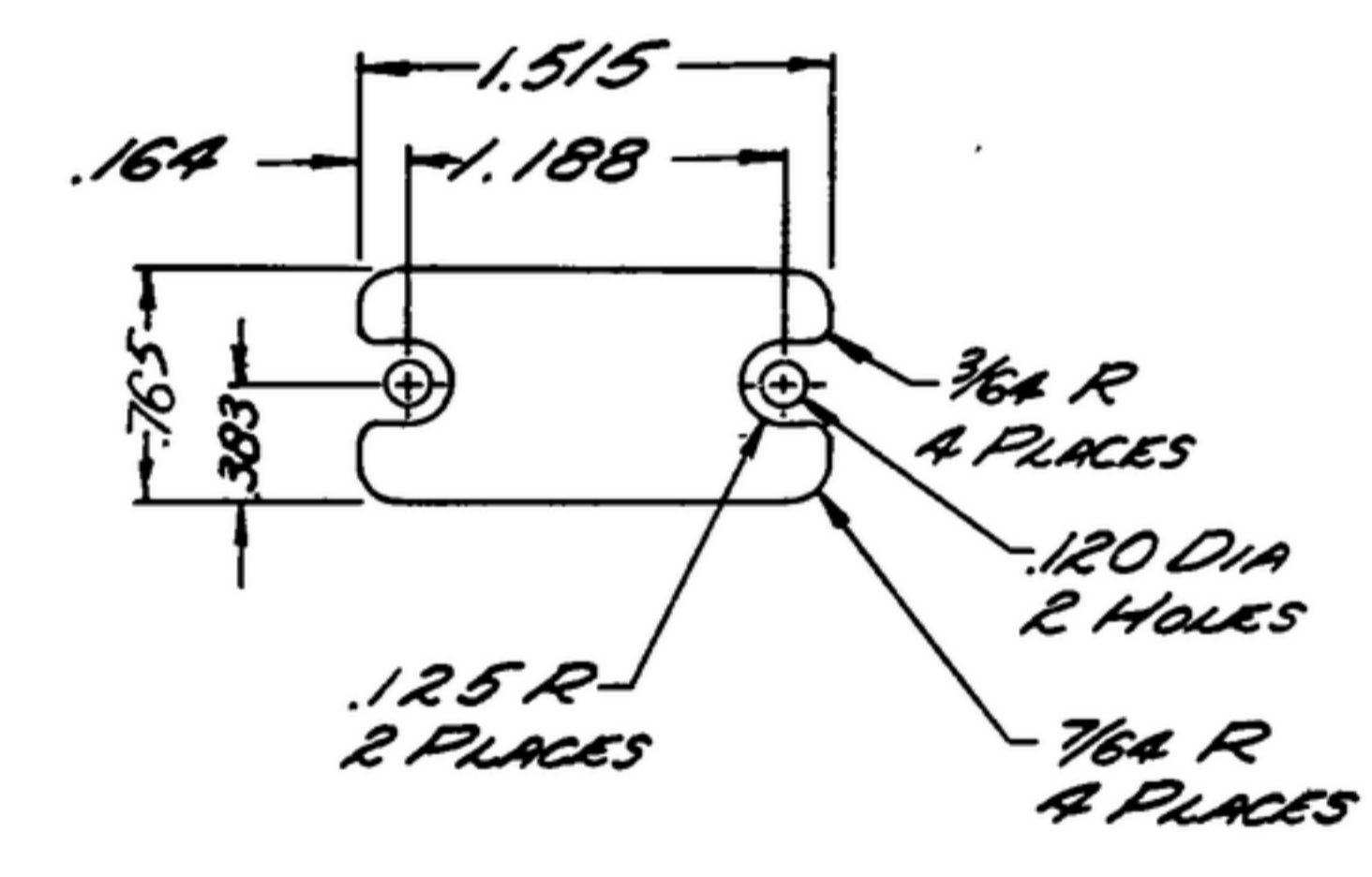
THIS DOCUMENT HAS BEEN PUBLISHED BY THE GOVERNMENT AND MAY BE REPRODUCED AND USED IN CONNECTION WITH ANY GOVERNMENT PROCEDURE OR OPERATION.

*FOR INFORMATION ONLY. CONTRACTOR MAY AT HIS OPTION DEVIATE FROM THESE PROCESS DETAILS.

X SWE APPROVAL		REVISIONS		
SYN	PR	DESCRIPTION	DATE	APPROVAL
	10042-8	A	SEE SHEET I FOR REVISIONS	27 OCT 59 PME
	CA.84855	B	(1) ADDED "OUT C IN" TO FL 601	14 OCT 60 PME
		C	(1) SEE SHEET I FOR REVISION	REV'D PME
		D ₁	(1) SEE SHEET I FOR REV	30 MAR 1965 REV PME



HOLE GROUP	DESCRIPTION	REQD
A	SEE DETAIL A	2
B	B	1
C	C	2
D	D	1
E	E	2
F	F	4
G	G	2
H	H	2
J	J	1
K	K	1
L	9/64 DIA	1
M	.171 DIA	4
N	172 DIA ±.001	4
P	3/12 ±.001 DIA	4



DESIGN PART NO.	ITEM	QTY	PART NO.	DESCRIPTION	DATE	DATE SPEC.
LIST OF MATERIAL						
COLLINS PART NO. 558-0539004						

DRAWN RDG CHECKED Rhm APPROVED UNLESS OTHERWISE SPECIFIED: DECIMAL DIMENSIONS INCLUDING HOLE SIZE MAY VARY ±.005 FRACTIONAL DIMENSIONS INCLUDING HOLE SIZE MAY VARY ±1/64 MACHINED ANGLES MAY VARY ±.1° SWEARED ANGLES MAY VARY ±.25° BROKEN ANGLES MAY VARY ±1° ECCENTRICITY BETWEEN ANY DIAMETERS ON THE SAME CENTERLINE SHALL NOT EXCEED .010 TOTAL INDICATOR READING. ALL DIMENSIONS ARE FINISH DIMENSIONS INCLUDING APPLIED FINISH AND ARE GIVEN IN INCHES.	DEPARTMENT OF THE ARMY SIGNAL CORPS ENGINEERING LABORATORIES FORT MONMOUTH NEW JERSEY 5M-D-248990 SHEET 2
COLLINS-RABS-00- 558-0539-1000- 1M21A-PH- 51-93 SIGNAL CORPS REVIEWED PME HLY APPROVED PME DATE: JAN 1956 SCALE: 1/1	CHASSIS-AUDIO
558-0539-003 5M-C-248989 SC-DL-248775 COLLINS NO. 5774 NEXT ASBY USED ON APPLICATION	WHEN REFERRING TO THIS DRAWING STATE DRAWING NO., APPLICABLE ISSUE SYMBOL, IF ANY, AND DATE