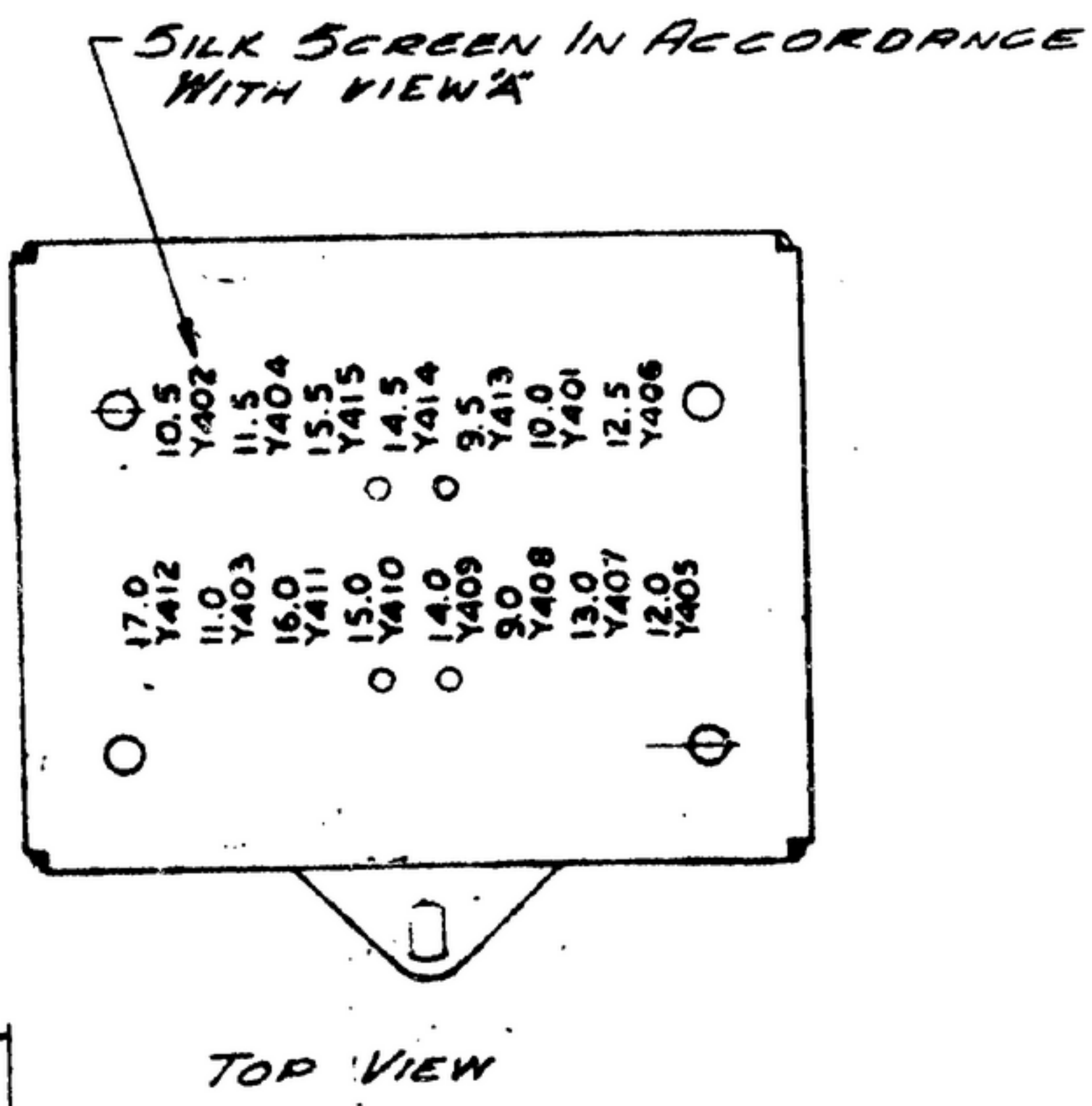
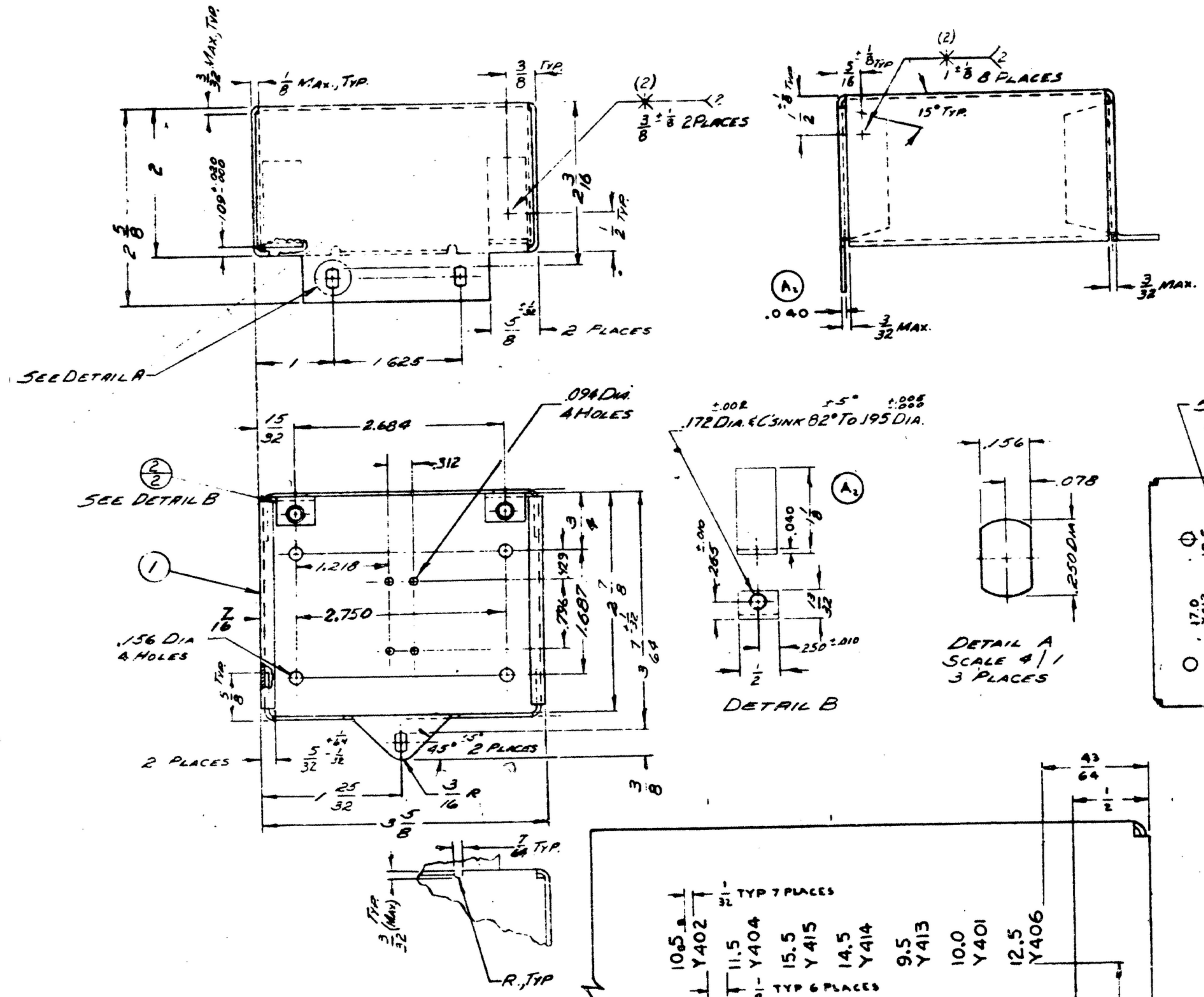


THIS DRAWING IS NOT TO BE REPRODUCED OR TRANSMITTED IN ANY FORM OR BY ANY MEANS, ELECTRONIC OR MECHANICAL, INCLUDING PHOTOCOPYING, RECORDING, OR BY ANY INFORMATION STORAGE AND RETRIEVAL SYSTEM. THE CONTRACTOR SHALL BE RESPONSIBLE FOR OBTAINING ALL NECESSARY DATA FROM THE APPROPRIATE AUTHORITY AND FOR ASSURING THE ACCURACY OF ALL DIMENSIONS AND TOLERANCES. THE CONTRACTOR SHALL BE RESPONSIBLE FOR OBTAINING ALL NECESSARY DATA FROM THE APPROPRIATE AUTHORITY AND FOR ASSURING THE ACCURACY OF ALL DIMENSIONS AND TOLERANCES.

FOR INFORMATION ONLY. CONTRACTOR MAY AT HIS OPTION DEVIATE FROM THESE PROCESS DETAILS.

SYN	REV	DESCRIPTION	DATE	APPROVAL
SYM-FR-10084-8	A6	A. REVISED NOTE 3 SUPP.DTE SHP A1 ADDED THK DIM TO VIEW 6 A2 REMOVED REF TO ITEM 3; A4 5052 WAS 525 A5 ADDED VIEW 'A' A6 MIL W-6858 WAS MIL-W-6860	27 OCT 59	4242B-PF 59-AI-SI REV'D PME
	B	(1) DELETED NOTE 5	61 OCT 61	4242B-FC-30 REPPS PME
	C1	C1-CORRECTED Y 408 MARKING & PUNCTUATION	15 DEC 1966	6-00189 REV'D ECZ SHP

\* WHEN PART NUMBER APPEARS AS 658-0392 9-4  
\* MILITARY SOURCE INFORMATION IS REQUIRED.



17.0 11.0 16.0 15.0 14.0 9.0 13.0 12.0		11.5 15.5 14.5 9.5 10.0 12.5 12.0		10.5 11.5 16.0 15.0 14.5 9.5 10.0 12.5 12.0	
1- Y412	21- Y403	21- Y404	21- Y415	21- Y414	21- Y409
TYP 8 PLACES		TYP 6 PLACES		TYP 7 PLACES	
1- Y412		21- Y403		21- Y404	
TYP 8 PLACES		TYP 6 PLACES		TYP 7 PLACES	

ALUMINUM ALLOY 5052 TEMPER H32, PER SPEC. QD-A-318  
FINISH: E513 PER SPEC. MIL-F-14072.  
\* COLLINS 580-0036-00.

- NOTES:  
1. ALL RELIEF & BEND RADII 1/16 MAX.  
2. SPOT WELDING SHALL BE IN ACCORDANCE WITH SPEC. MIL-W-6858. SPOT WELDING SYMBOL SHALL BE IN ACCORDANCE WITH JAN-STD-19.  
3. SILK SCREENING TO BE LOCATED AS SHOWN. ALL CHARACTERS TO BE 3/32 HIGH GOTHIC TYPE PER SPEC. MIL-M-13231 GROUP II. COLOR TO BE BLACK COLOR CHIP #27038 PER FED. STD. 595 COVER DESIG. WITH 1 COAT OF VARNISH PER MIL-V-173-TYPE II.  
4. IN ALL SPLIT BALLOONS, TOP FIGURE IS MATERIAL LIST ITEM INDICATOR & BOTTOM FIGURE IS QUANTITY.

EAC NO. 1500-0187

ISSUE	REV	DATE	BY	DESCRIPTION
558-0392-003	3	27 OCT 59	PME	SILK SCREEN OVEN SHIELD
558-0392-004	2	27 OCT 59	PME	BRACKET OVEN
558-0392-004	1	27 OCT 59	PME	SHIELD OVEN

APP. NO.	EXT.	EXT. NO.	EXT. DATE	EXT. BY
558-0392-003	3	27 OCT 59	PME	SILK SCREEN OVEN SHIELD
558-0392-004	2	27 OCT 59	PME	BRACKET OVEN
558-0392-004	1	27 OCT 59	PME	SHIELD OVEN

APPROVED	DATE	SCALE
PME	29 DEC 59	1/1

DEPARTMENT OF THE ARMY  
SIGNAL CORPS ENGINEERING LABORATORIES  
PORT SMOUTH, NEW JERSEY  
SM-D-249 042