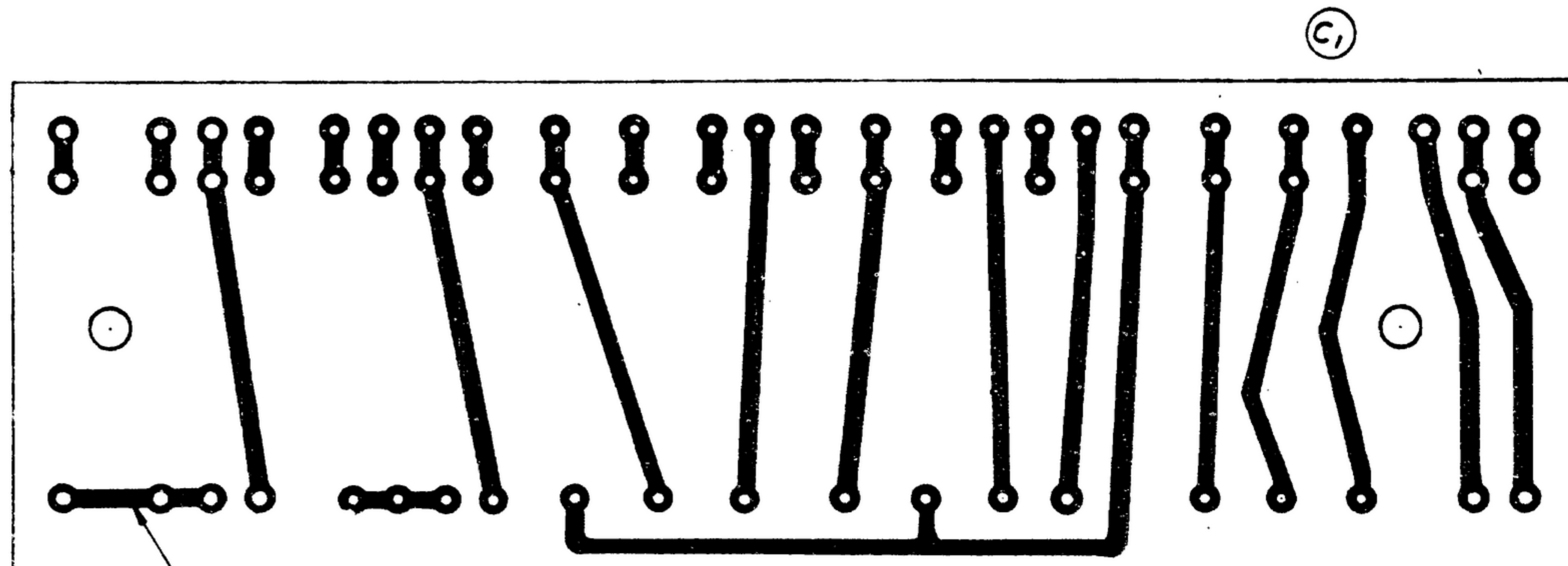
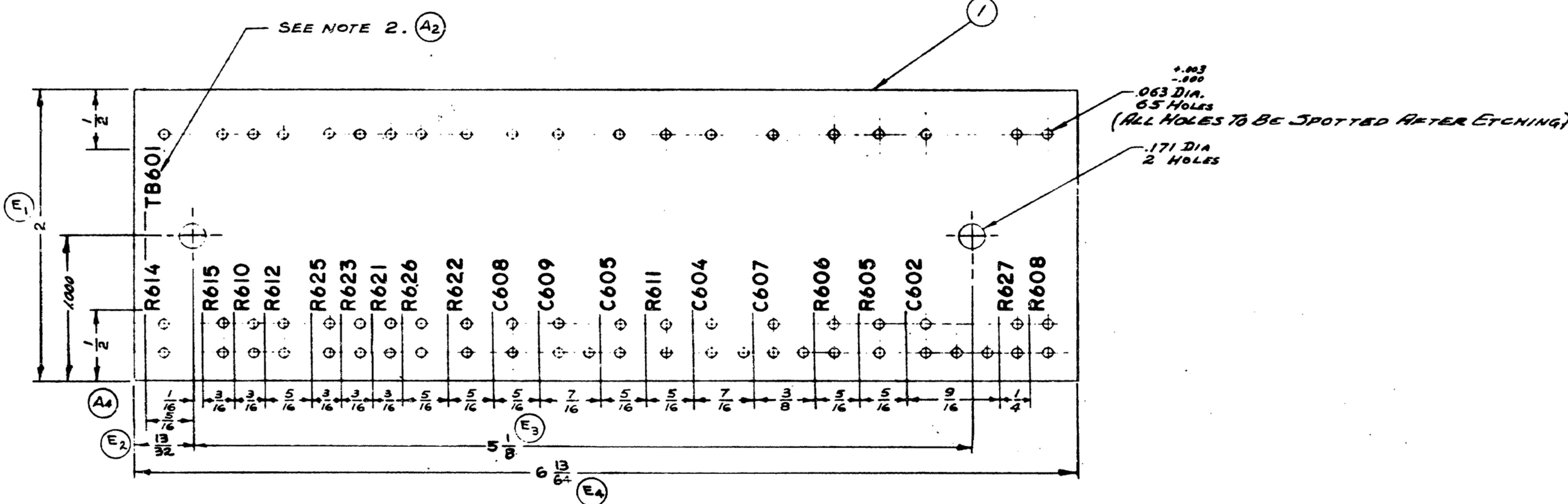


THIS DRAWING IS THE PROPERTY OF THE SIGNAL CORPS ENGINEERING LABORATORIES. IT IS TO BE USED FOR THE MANUFACTURE OF THIS DRAWING ONLY. IT IS NOT TO BE REPRODUCED OR TRANSMITTED IN ANY FORM OR BY ANY MEANS, ELECTRONIC OR MECHANICAL, INCLUDING PHOTOCOPYING, RECORDING, OR BY ANY INFORMATION STORAGE AND RETRIEVAL SYSTEM. THE USER SHALL BE RESPONSIBLE FOR OBTAINING NECESSARY PERMISSIONS FROM THE SIGNAL CORPS ENGINEERING LABORATORIES FOR ANY OTHER USE OF THIS DRAWING.

* FOR INFORMATION ONLY. CONTRACTOR MAY AT HIS OPTION DEVIATE FROM THESE PROC'SS DETAILS



PRINTED CIRCUIT TO BE ACID ETCHED IN ACCORDANCE WITH DRAWING SM-C-249151. *553 0303 004



SWE APPROVAL		REVISIONS			
SYM	PR	SYM	DESCRIPTION	DATE	APPROVAL
	PR10042-6	A5	A1 - MAT'L WAS PER DWG. SM-B-283225; A2 - DELETED ITEM 3, & SILK SCREEN REF. NOTE #3. A3 - NOTE 2 REPLACED ITEM 3; A4 - LOCATED SILK SCREENING BY DIM; A5 - ADDED CHARACTER DIM'S & REF. TO FED STD. 595 & SPEC MIL-V-173 TO NOTE 2.	27 OCT. 59	42428-PC-59-11-51 REV'D. P.M.B.
B1	CA B4821	B1	B1 - ADDED NOTE #3	29 JUNE 60	42428-PC-59 REV'D. P.M.B.
C	CA B4875	C	C1 - CORRECTED PRINTED CIRCUIT PICTORIALY.	17 OCT. 61	42428-PC-59 REV'D. P.M.B.
D1		D1	(1) NOTE 4 WAS U.S. ARMY SIGNAL MATERIAL SUPPLY AGENCY. ATIN: 116M5 PPK.	26 MAR 1965	215824-01 REV'D. P.M.B.
E4		E4	E1 - 2 WAS 2.000 E2 - 1 WAS 4.00 E3 - 5 WAS 5.120 E4 - 6 WAS 6.200	21 NOV 1966	6-00189 REV'D. P.M.B.

NOTES:

- (A1) 1. MATERIAL TO BE COPPER CLAD GLASS CLOTH LAMINATED, TYPE FLEG. .062 CU 28 PER MIL-P-21466.
- (A5) 2. SILK SCREENING TO BE LOCATED AS SHOWN ± 1/32. ALL CHARACTERS TO BE 3/32 HIGH GOTHIC TYPE PER MIL-M-13231, GROUP II. COLOR TO BE BLACK, COLOR CHIP #27038, PER FED STD. #595, COVER DESIGNATIONS WITH ONE COAT OF VARNISH PER MIL-V-173 TYPE II.
- (B1) 3. FINISH: BRIGHT ALLOY PLATE PER ALBALLOY PROCESS BY HANSON-VAN WINKLE-MUNNING CO. MATAWAN N.J., OR EQUAL.
- (A2) 4. THE MASTER OF THE PRINTED WIRING MP 1064 WILL BE SUPPLIED BY P&P DIRECTORATE, U.S. ARMY ELECTRONICS COMMAND, FORT MONMOUTH, NEW JERSEY ATTN: AMSEL-PP-E-CAD. UPON REQUEST BY THE CONTRACTOR.

ITEM	QTY	DESCRIPTION	DATE	BY
558 0336 004	3	REF SM-D-249151		
558 0337 004	2	REF SM-C-249151		
558 0337 004	1	SM-D-249152-1		

DRAWN ECS	CHECKED [Signature]	APPROVED [Signature]	DATE 142A-PH. 51-93
UNLESS OTHERWISE SPECIFIED: MINOR DIMENSIONS INCLUDING HOLE SIZE MAY VARY ± .005 FRACTIONAL DIMENSIONS INCLUDING HOLE SIZE MAY VARY ± .004 MACHINED ANGLES MAY VARY ± .1° BROKEN ANGLES MAY VARY ± .05° CONCENTRICITY BETWEEN ANY DIAMETERS ON THE SAME CENTERLINE SHALL NOT EXCEED ONE TOTAL INDICATOR READING ALL DIMENSIONS ARE FINISH DIMENSIONS INCLUDING APPLIED FINISH AND ARE GIVEN IN INCHES		SIGNAL CORPS REVIEWED PNE APPROVED HLY PNE DATE 19 MAR 56	
APPLICATION		DEPARTMENT OF THE ARMY SIGNAL CORPS ENGINEERING LABORATORIES FORT MONMOUTH NEW JERSEY SM-D-249152	