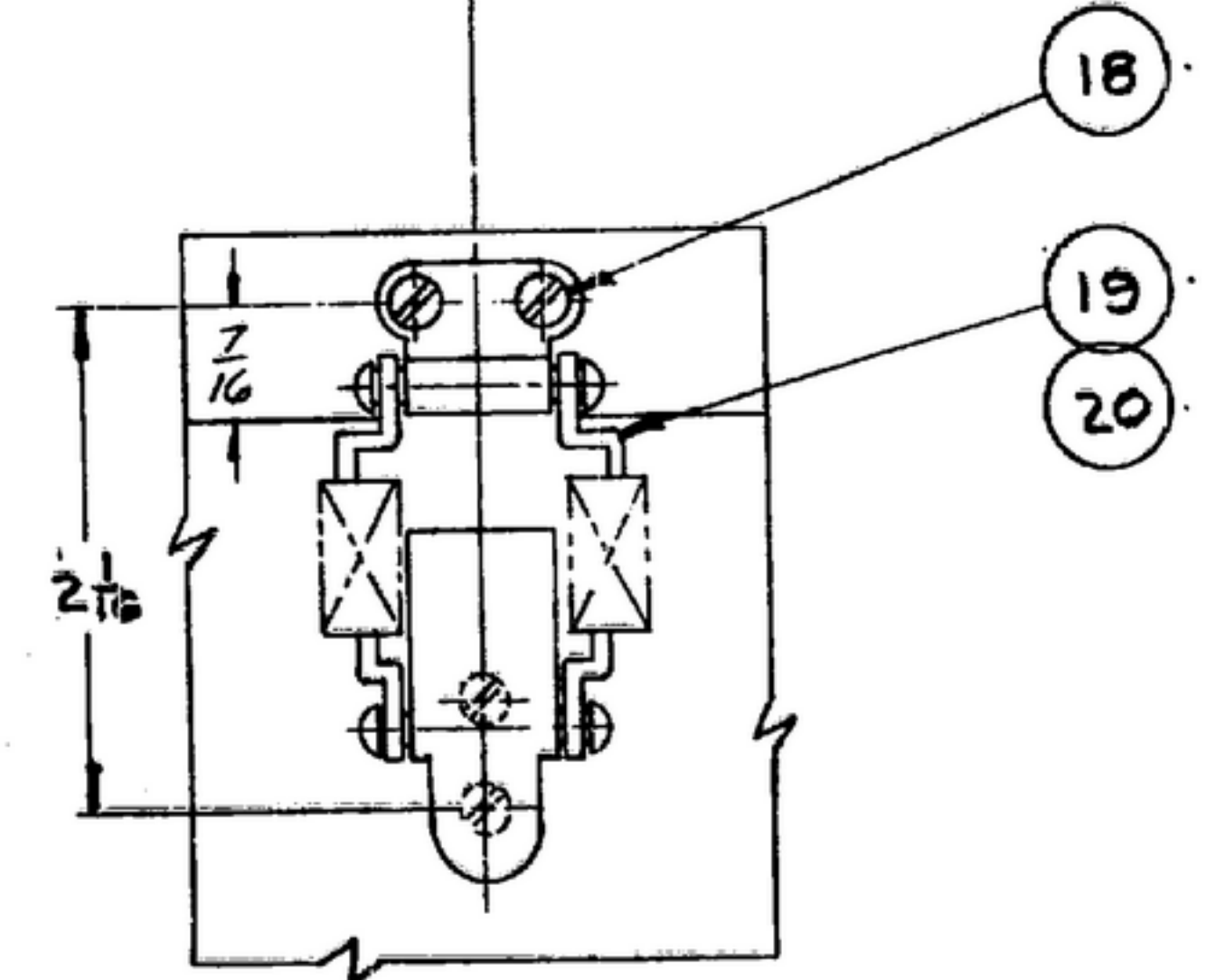
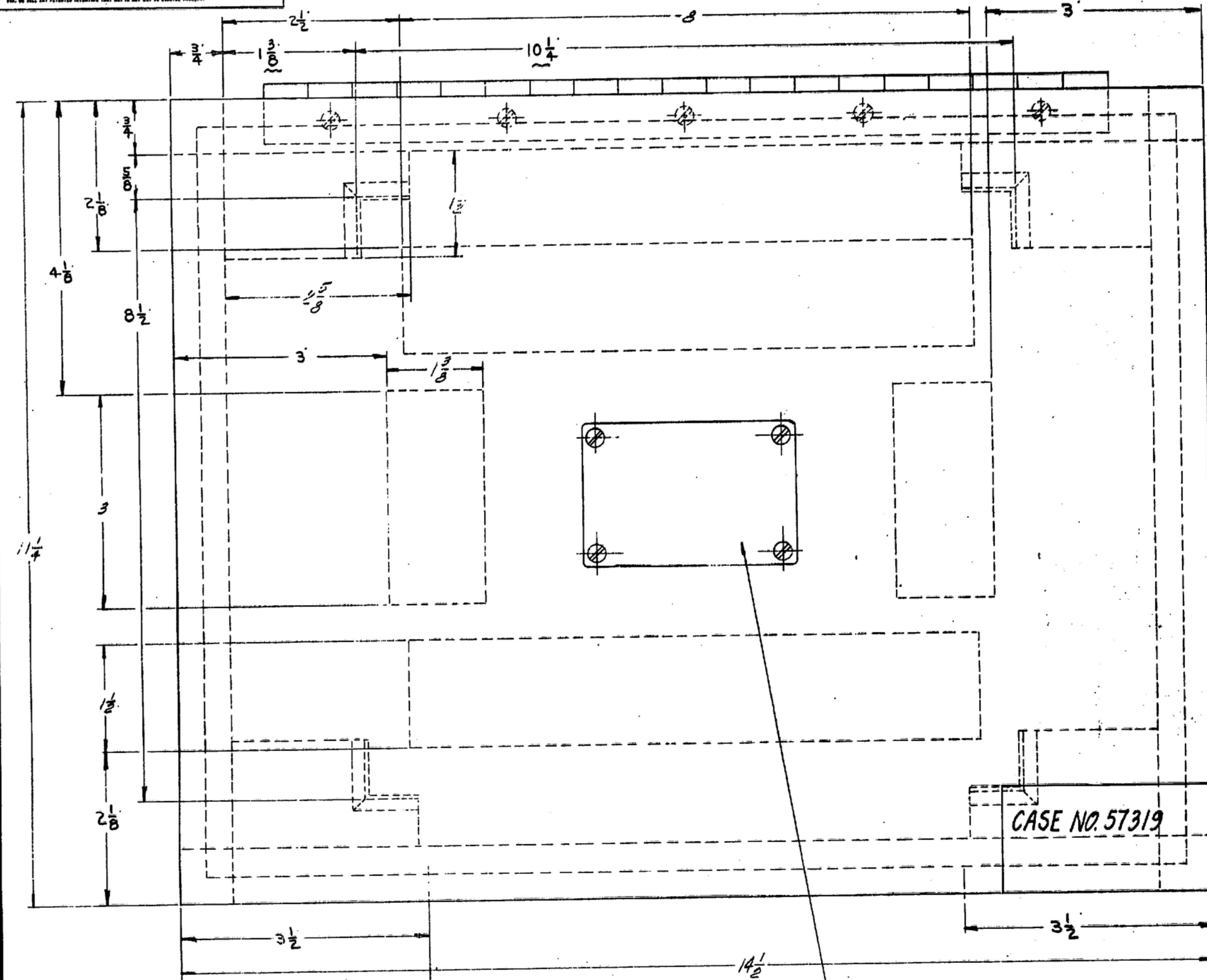


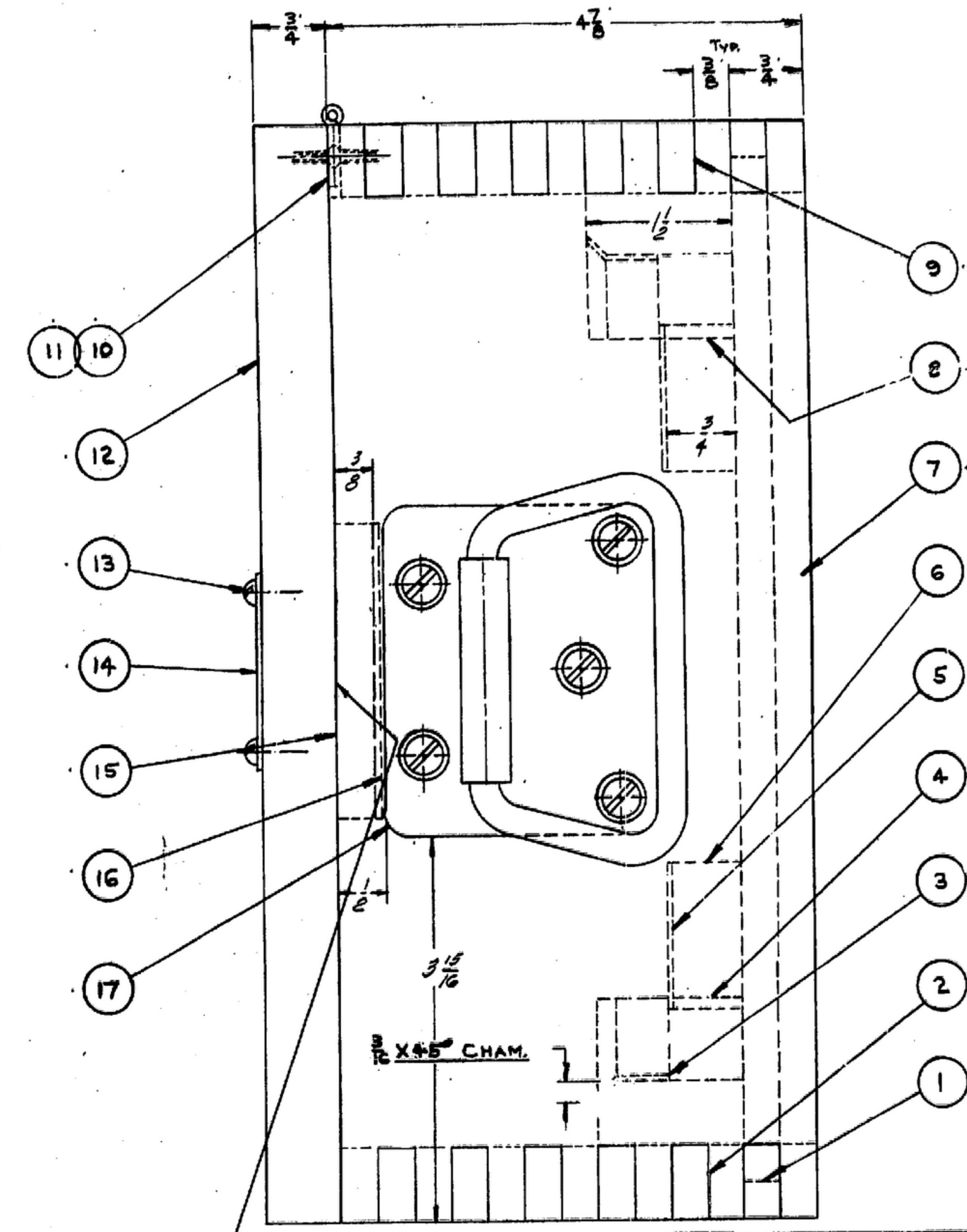
NOTE: *FOR INFORMATION ONLY. CONTRACTOR MAY AT HIS OPTION DEVIATE FROM THESE PROCESS DETAILS

UNLESS OTHERWISE SPECIFIED DIMENSIONS ARE IN INCHES FRACTIONS DECIMALS ANGLES
 + 1/32

THIS DRAWING HAS BEEN FORWARDED BY THE INSTRUMENT AND MAY BE REPRODUCED AND USED IN CONNECTION WITH ANY APPROPRIATE INSTRUMENT OR EQUIPMENT.



ENGRAVE
 GAGE FOR R-330MURK
 CAUTION - PRECISION INSTRUMENT
 HANDLE WITH CARE.
 REPLACE GAGE IN ASSIGNED
 POSITION IN CASE WHEN NOT
 IN ACTUAL USE.
 BOX 6 OF 13



MARKING
 GAGE NO. 57318

- NOTES:
- SUPPLIED BY:
1. McMASTER-CARR SUPPLY CO.
 640 WEST LAKE STREET
 CHICAGO 6, ILLINOIS. OR EQUAL
 2. CORBIN CABINET LOCK DIVISION
 THE AMERICAN HARDWARE CORP.
 NEW BRITAIN, CONNECTICUT.
 OR EQUAL
 3. COMMERCIAL DOUGLAS FIR PLYWOOD.
 EXTERIOR TYPE GRADE SOUND 2, SIDES
 EXTERIOR PER SPEC. MIL-P-66.
 4. ALL JOINTS INCLUDING BOTTOM SHALL BE
 BONDED WITH ADHESIVE PER SPEC. MIL-A-331
 TYPE 1, CLASS 1, AND APPLIED PER SPEC.
 MIL-A-9433.
 5. BREAK ALL UNNECESSARY SHARP EDGES.

QTY	PART NO.	DESCRIPTION	MATL	MATL SPEC	NOTES
20	2	20 CORBIN STRIKE #15794			2
19	2	19 CORBIN CATCH #15824			2
18	8	18 3/8 X 1/2 RND WOOD SCR	BRASS		
17	2				1
16	2		FELT	C-F-206	
15	2		HARDWOOD	MM-L-736	
14	1		AL ALLOY	QR-A-318	
13	4		BRASS		
12	1		PLYWOOD		
11	10		BRASS		
10	1				1
9	1		PLYWOOD		
8	2		HARDWOOD	MM-L-736	
7	2	7 SIDE 3/4 X 4 7/8 X 11 1/4	PLYWOOD		
6	2	6 RAIL 3/4 X 1 1/2 X 8	PLYWOOD		
5	2	5 PAD 1/16 X 1 1/2 X 8	FELT	C-F-206	
4	2	4 BLOCK 1 1/2 X 1 1/2 X 2 3/8	HARDWOOD	MM-L-736	
3	4	3 PAD 1/16 X 3/4 X 1 1/2	FELT	C-F-206	
2	1	2 SIDE 3/4 X 4 7/8 X 14 1/2	PLYWOOD		
1	1	1 SM-D-57318-1 BOTTOM 3/4 X 10 1/2 X 13 3/4	PLYWOOD		

UNLESS OTHERWISE SPECIFIED DIMENSIONS ARE IN INCHES TOLERANCES ON FRACTIONS DECIMALS ANGLES + 1/32	G. W. R. & Co. ORDER 08719-PH-55-93 SIGNAL CORPS REVIEWED PAE APPROVED DATE 26-10-53 SCALE FULL	DEPARTMENT OF THE ARMY SIGNAL CORPS ENGINEERING LABORATORIES FORT MONMOUTH NEW JERSEY SM-D-57319
80-81-57592 NEXT ASSY USED ON APPLICATION	CASE, GAGE	WHEN REFERRING TO THIS DRAWING STATE DRAWING NO., APPLICABLE ISSUE SIZE, Y. AND DATE.