

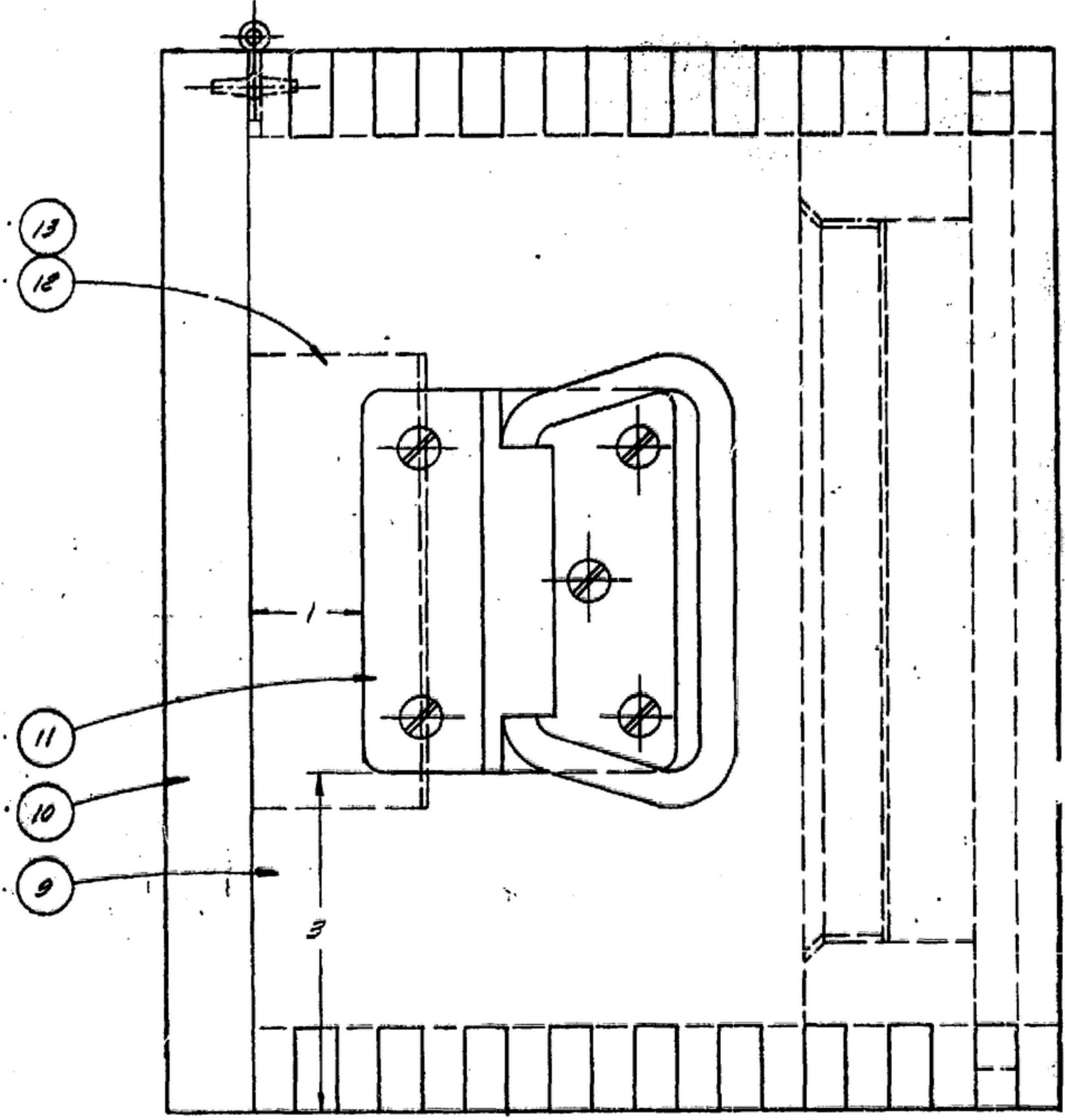
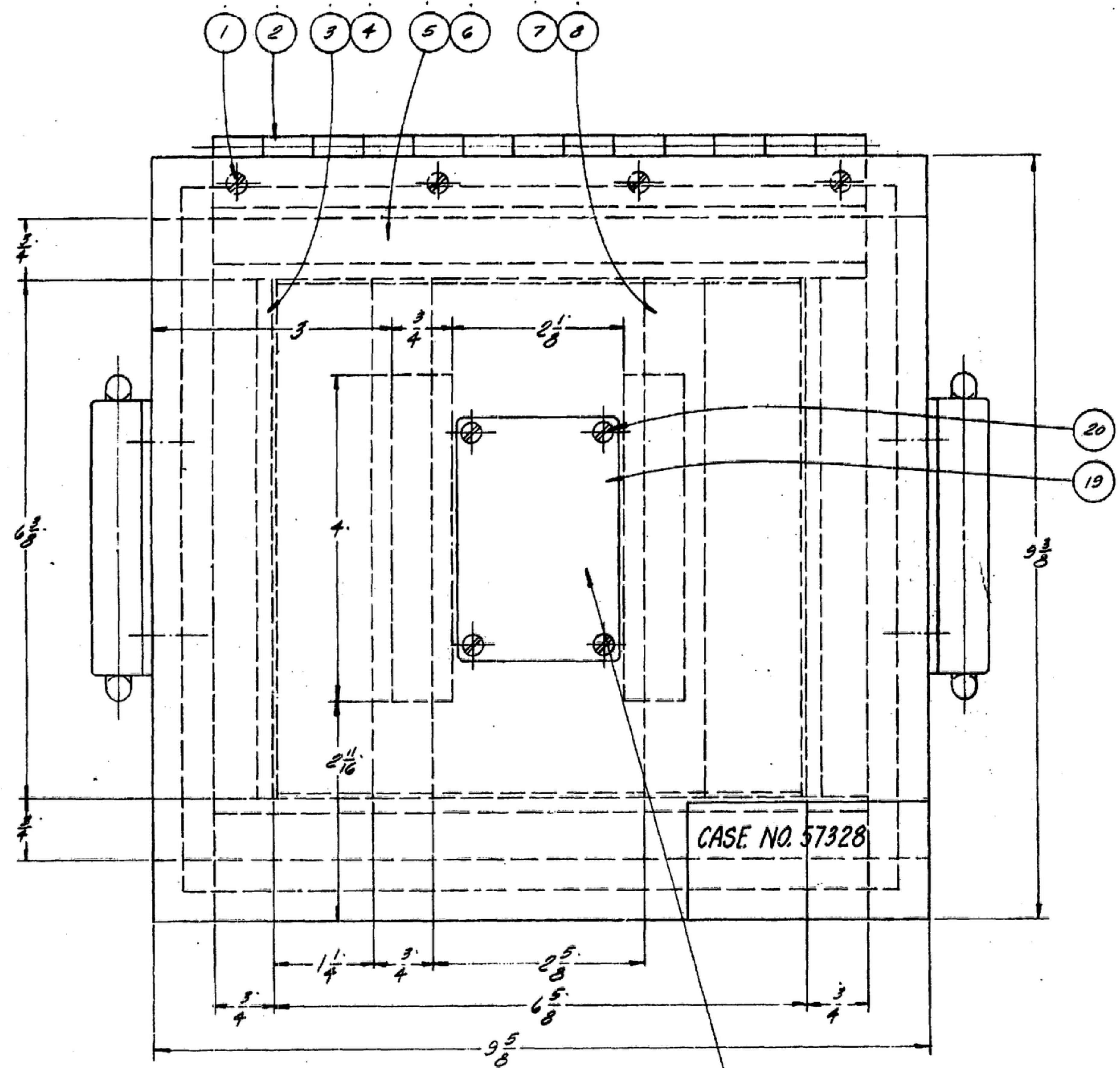
UNLESS OTHERWISE SPECIFIED, DIMENSIONS ARE IN INCHES. DIMENSIONS ON FRACTIONS ON ANGLES SHALL BE DECIMALS. DIMENSIONS ON ANGLES SHALL BE DECIMALS. DIMENSIONS ON ANGLES SHALL BE DECIMALS.

THIS DRAWING IS THE PROPERTY OF THE GOVERNMENT AND IS LOANED TO YOU FOR YOUR INFORMATION ONLY. IT IS NOT TO BE REPRODUCED OR TRANSMITTED IN ANY FORM OR BY ANY MEANS, ELECTRONIC OR MECHANICAL, INCLUDING PHOTOCOPYING, RECORDING, OR BY ANY INFORMATION STORAGE AND RETRIEVAL SYSTEM, WITHOUT PERMISSION IN WRITING FROM THE GOVERNMENT.

NOTE: \*FOR INFORMATION ONLY. CONTRACTOR MAY AT HIS OPTION DEVIATE FROM THESE PROCESS DETAILS

REVISIONS ORIGINAL ISSUE A 25-10-55

BYN	DESCRIPTION	DATE	APPROVAL



CASE NO. 57328

ENGRAVE:  
 GAGE FOR R-390A/URR  
 CAUTION - PRECISION INSTRUMENT  
 HANDLE WITH CARE  
 REPLACE GAGE IN ASSIGNED  
 POSITION IN CASE WHEN NOT  
 IN ACTUAL USE.  
 BOX 11 OF 13

- NOTE:
- SUPPLIED BY MCMISTER-CARR SUPPLY CO.  
640 W. LAKE ST. CHICAGO 6, ILL. OR EQUAL
  - SUPPLIED BY CORBIN CABINET LOCK DIV.  
THE AMERICAN HARDWARE CO. R.  
NEW BRITAIN, CONN. OR EQUAL
  - COMMERCIAL DOMESTIC FIR PLYWOOD EXTERIOR TYPE,  
GRADE SOUND 2, SIDES EXTERIOR PER SPEC. MIL-P-66.
  - ALL JOINTS INCLUDING BOTTOM SHALL BE BONDED  
WITH ADHESIVE PER SPEC. MIL-A-397 TYPE I, CLASS I  
AND APPLIED PER SPEC. MIL-A-5488.
  - BREAK ALL UNNECESSARY SHARP EDGES
  - BEFORE ASSEMBLY OF HARDWARE, PADDING AND NAME-  
PLATE, ALL INSIDE AND OUTSIDE SURFACES OF CASE  
SHALL BE FINISHED AS FOLLOWS, SAND AND APPLY  
ONE COAT OF WOOD SEALER PER SPEC MIL-S-851B,  
STENCIL AS INDICATED AND APPLY TWO COATS OF  
CLEAR SPAR VARNISH PER SPEC TT-V-113.

QTY	PART NO.	DESCRIPTION	MATL	MATL SPEC	NOTES
20	4	20 5/8 x 1/2 RD. HD. WOOD SCR.	BRASS		
19	1	19 TAG TO SUIT	AL ALLOY	88-A-318	
18	2	18 SIDE 3/4 x 7 1/2 x 9 3/8	PLYWOOD		
17	1	17 BOTTOM 3/4 x 8 3/4 x 8 3/8	PLYWOOD		
16	1	16 CORBIN CATCH #15824			2
15	1	15 CORBIN STRIKE #15784			2
14	4	14 5/8 x 1/2 RD. HD. WOOD SCR.	BRASS		
13	2	13 PAD 1/16 x 3/4 x 4	FELT	C-F-206	
12	2	12 BLACK 3/4 x 1 1/2 x 4	PLYWOOD		
11	2	11 CASE HARDWARE			1
10	1	10 TOP 3/4 x 9 3/8 x 9 3/8	PLYWOOD		
9	2	9 SIDE 3/4 x 7 1/2 x 9 3/8	PLYWOOD		
8	2	8 PAD 1/16 x 3/4 x 6 1/8	FELT	C-F-206	
7	2	7 RAIL 3/4 x 3/4 x 6 1/8	PLYWOOD		
6	2	6 PAD 1/16 x 3/4 x 6 1/2	FELT	C-F-206	
5	2	5 RAIL 3/4 x 1 1/2 x 6 1/8	PLYWOOD		
4	2	4 PAD 1/16 x 1 1/2 x 6 1/8	FELT	C-F-206	
3	2	3 RAIL 3/4 x 1 1/2 x 6 1/8	PLYWOOD		
2	1	2			1
1		SM-D-57328-1 7 5/8 x 1 1/2 FLAT HD. WOOD SCR.	BRASS		

UNLESS OTHERWISE SPECIFIED DIMENSIONS ARE IN INCHES TOLERANCES ON FRACTIONS ON ANGLES ± 1/32		CALLEND RADIO CO. ORDER # 08719-PH-55-93 SIGNAL CORPS		CASE, GAGE		DEPARTMENT OF THE ARMY SIGNAL CORPS ENGINEERING LABORATORIES FORT MONMOUTH NEW JERSEY	
REVIEWED PMB	APPROVED MMA	DATE 25-10-55	SCALE FULL	SM-D-57328 SHEET 1 OF 2			
APPLICATION							

WHEN REFERRING TO THIS DRAWING STATE DRAWING NO., APPLICABLE ISSUE SYMBOL IF ANY, AND

