

UNLESS OTHERWISE SPECIFIED, DIMENSIONS ARE IN INCHES. DIMENSIONS ARE IN MILLIMETERS UNLESS OTHERWISE SPECIFIED. DIMENSIONS ARE IN MILLIMETERS UNLESS OTHERWISE SPECIFIED. DIMENSIONS ARE IN MILLIMETERS UNLESS OTHERWISE SPECIFIED.

THIS DOCUMENT IS THE PROPERTY OF THE SIGNAL CORPS ENGINEERING LABORATORIES. IT IS TO BE RETURNED TO THE SIGNAL CORPS ENGINEERING LABORATORIES AT THE END OF THE PROJECT. IT IS TO BE DESTROYED AT THE END OF THE PROJECT.

*FOR INFORMATION ONLY, CONTRACTOR MAY AT HIS OPTION DEVIATE FROM THESE PROCESS DETAILS.

ORIG SYM ISS A REVISIONS 19 NOV 58

NOTES:

- SUPPLIER FOR: (OR APPROVED EQUIVALENT)
 - ITEM 78: SPRING ACTION ELECTRIC CORP., DIV OF PARAGON RUBBER CO. EAST HAMPTON, MASS.
 - ITEM 79: BELDEN MFG CO. CHICAGO, ILLINOIS
 - ITEMS 5, 6 & 8: OHMITE MFG CO, SKOKIE, ILL.
 - ITEMS 7 & 58: ALLEN BRADLEY CO, MILWAUKEE, WISC.
 - ITEM 9: P. R. MALLORY & CO, INDIANAPOLIS, IND.
 - ITEMS 10 & 11: THORDARSON MEISSNER MFG, MT CARMEL, ILL.
 - ITEMS 12, 13 & 14: RADIO CORPORATION OF AMERICA, CHICAGO, ILL.
 - ITEMS 15, 16 & 17: WESTON ELECTRICAL INSTRUMENT CORP, NEWARK, N. J.
 - ITEMS 18, 19, 20, 35 & 36: CINCH MFG CO, CHICAGO, ILL.
 - ITEMS 21 & 22: DRAKE MFG CO, CHICAGO, ILLINOIS
 - ITEMS 23 & 24: LITTEL FUSE INC, DES PLAINES, ILL.
 - ITEMS 25, 56 & 57: CUTLER-HAMMER INC MILWAUKEE, WISC.
 - ITEM 26: GENERAL ELECTRIC CO, SPECIALTY ELECTRONICS 77: COMPONENTS DEPT, SYRACUSE, N. Y.
 - ITEMS 27, 28, 29, 30 & 65: AMPHENOL ELECTRONICS CORP, CHICAGO, ILL.
 - ITEM 31: H. DAVIES CO, CHICAGO, ILLINOIS
 - ITEMS 32 & 33: WALSCO ELECTRONICS MFG CO, DIV OF TEXTRON, LOS ANGELES, CALIF.
 - ITEMS 36, 37, 38, 40, 45, 49 & 54: SHAKEPROOF, DIV. ILLINOIS TOOL WORKS, ELGIN, ILLINOIS
 - ITEMS 39, 41, 42, 43, 44, 46, 47, 48, 50, 51, 52, 53 & 55: HERCULES FASTENER CO, CHICAGO, ILLINOIS
 - ITEM 59: GATES WASHER CO, CHICAGO, ILLINOIS
 - ITEM 60: ELASTIC STOP NUT CORP OF AMERICA, UNION, N. J.
 - ITEM 61: PARKER-KALON CORP, CLIFTON, N. J.
 - ITEM 62, 63 & 64: BENTLEY-HARRIS MFG CO, CONSHOHOCKEN, PENN.
 - ITEMS 66, 67 & 68: CONSOLIDATED WIRE & ASSOC CO, CHICAGO, ILL.
2. LEADS WITH COLOR IDENTIFIED ARE BREAKOUTS FROM TRANSFORMERS T1 & T2.
 3. LETTERED LEADS ARE JUMPER WIRES (SEE TABLE "A") SHOWN BY SINGLE LINE, LETTERED AT BOTH ENDS FOR CLARIFICATION.
 4. NUMBERED LEADS ARE BREAKOUTS FROM CABLE.
 5. WIRE SHALL BE TYPE (S) DRAWN AND ANNEALED, TINNED PER SPEC MIL-W-3861.
 6. RUN WIRES LOOSE AND DRESSED BACK AGAINST THE CHASSIS IN THE MOST CONVENIENT MANNER.
 7. USING ITEM 75, TAPE LEADS FROM TRANSFORMERS & JUMPERS WHERE EVER PRACTICAL, MAKING RUNNING LOCK STITCH HAVING 1/2 TO 1 INCH SPACING WITH DOUBLE STITCHES AT START AND FINISH OF LACING.
 8. USE ITEM 62 TO INSULATE LEADS FROM METERS & TO INSULATE LEADS FROM CONNECTOR
 9. WIRE LENGTHS INDICATED IN MATL LIST ARE PRELIMINARY AND SHALL BE CUT TO PROPER LENGTH IN ASSEMBLY.
 10. ITEM 42 TO BE FINISHED GRAY WITH CABINET.
 11. ELECTRICAL CONNECTIONS SHALL BE SOLDERED USING ITEM 76.
 12. LACING TAPE, TYPE P, WAXED, CLASS 2 PER SPEC MIL-T-713.

ITEM	QTY	SIG	PART NO.	DESCRIPTION	MATL-FIN	FIN SIZE	SHT	NOTES
79	72	#	-79	CORD #8452			6	1
78	1		-78	CONN # ALLIED 108			6	1
77	1		-77	CONNECTOR #GE-4317-1			6	1
76	AS REQD		-76	SOLDER .062 DIA Sn60WARP3			2&4	11
75	AS REQD		-75	TAPE, LACING (WHT)	NYLON		2	12
74	14	#	-74	WIRE #16			2	5
73	3"		-73	MW-C16(19)UB			2	
72	64"		-72	MW-C16(19)UR			2	
71	81"		-71	MW-C22(7)UO			2	
70	104"		-70	MW-C22(7)U2			2	
69	6		-69	MW-C22(7)UB		MIL-W-78	2	
68	72 1/2		-68	#16-8-5-1 GY-GRN-			6	1
				BRN				
67	36 1/2		-67	#20-0 BLK			6	1
66	36 1/2		-66	WIRE, #20-2 RED			6	1
65	72 1/2		-65	CABLE RG-58/U			6	1
64			-64	TUBING, 5/16 DIA	VINYL		6	1
63			-63	TUBING, 1/2 DIA	VINYL		6	1
62	AS REQD		-62	INSULATION, SLV			2	1
				GRADE AC-1 #BH-1151				
61	2		-61	SCR, (SELF-TAPPING) #2			2	1
				RH, TYPE Zx3/16 LG)				
60	12		-60	NUT, CLINCH #C3-62			2	1
59	1		-59	WASH., FLAT(3/8x5/8x.020)	STL-CAD PL		2	1
58	1		-58	NUT, (#3/8-32x3/32 HEX)			2	1
				#M2786				
57	1		-57	RING, LOCKING #29-761			2	1
56	2		-56	NUT, HEX #B15-254F1			2	1
55	6	SM-D-58791	-55	NUT, (#4-40x3/32 HEX)	STL-CAD PL		2	1

ITEM	QTY	SIG	PART NO.	DESCRIPTION	MATL-FIN	FIN SIZE	SHT	NOTES
54	13		-54	LK WASH., (#4 INT TOOTH)			2	1
				#1204-00				
53	3		-53	MS, (#4-40x1/2 LG SLOT. FH)			2	1
52	4		-52	MS, (#4-40x3/8 LG SLOT.			2	1
				BIND. HEAD)				
51	6		-51	MS, (#4-40x1/2 LG SLOT.			2	1
				BIND. HEAD)				
50	5		-50	NUT, (#8-32x5/16x1/8 HEX)			2	1
49	5		-49	LK WASH., (#8 INT TOOTH)			2	1
				#1208-00				
48	1		-48	MS, (#8-32x2 LG SLOT. BIND.			2	1
				HEAD)				
47	4		-47	MS, (#8-32x5/16 LG SLOT.			2	1
				BIND. HEAD)				
46	8		-46	NUT, (#6-32x3/32 HEX)			2	1
45	7		-45	LK WASH., (#6 INT TOOTH)			2	1
				#1206-00				
44	4		-44	MS, (#6-32x5/16 LG SLOT. FH)			2	1
43	4		-43	MS, (#6-32x5/16 LG SLOT.			2	1
				BIND. HEAD)				
42	12		-42	MS, (#6-32x3/8 LG SLOT.			2	1&10
				BIND. HEAD)				
41	4		-41	NUT, (#3-56x3/16x1/16 HEX)			2	1
40	4		-40	LK WASH., (#3 INT TOOTH)			2	1
				#1203-00				
39	4		-39	MS, (#3-56x3/8 LG SLOT. RH)	STL CAD PL		2	1
38	6		-38	#2160-08-00			2	1
37	1		-37	#2101-06-00			2	1
36	4		-36	TERM., LOCKING #2101-04-00			2	1
35	4		-35	TERM., STANDOFF #750			2	1
34	3		-34	TERM., STANDOFF #756			2	1
33	4		-33	FOOT, RUBBER #3350-2			2	1
32	4		-32	GROMMET #3340-3			2	1
31	1		-31	KNOB #1450-W			2	1
30	1		-30	#26-218			6	1
29	2		-29	UG-88U			6	1
28	1		-28	AN-31068-145-2P			6	1
27	1		-27	CONNECTOR AN-3102A-145-2S			2	1
26	1		-26	MOTOR BASE, MINIATURE,			2	1
				MALE #GE-4343-5				
25	1		-25	SWITCH #8381K8			2	1
24	2		-24	FUSE #312.75			2	1
23	2		-23	HOLDER, FUSE #342001			2	1
22	1		-22	PILOT DOME #25PF RED			2	1
21	1		-21	PILOT LIGHT ASSY #10INS			2	1
20	2		-20	SHIELD #12564			2	1
19	1		-19	SOCKET #12272			2	1
18	2		-18	SOCKET #13723			2	1
17	1		-17	0-300V. D.C. #506			2	1
16	1		-16	0-10 V. A.C. #517			2	1
15	1		-15	METER 0-150 V. A.C. #517			2	1
14	1		-14	TUBE OB2			2	1
13	1		-13	TUBE OA2			2	1
12	1		-12	TUBE 5Y3 GT			2	1
11	1		-11	CHOKE #T20C53			2	1
10	1		-10	TRANSFORMER #T24R01-U			2	1
9	1		-9	CAPACITOR #FP-444			2	1
8	1		-8	2G #1002			2	1
7	1		-7	#GB-5635			2	1
6	1		-6	RESISTOR, 3KQ			2	1
				#BROWN DEVIL				
5	1		-5	RHEOSTAT, MOD #H0162			2	1
4	1		-4	NAMEPLATE			0.032x3x1/16	4
3	1		-3	CABINET			9x7x.090	4
2	1		-2	PANEL			9x7x1/8	3
1	1	SM-D-58791-1	-1	CHASSIS	AL ALLOY		6x7x.090	5

SEE TABLE FOR PART NO. LIST OF MATERIAL

UNLESS OTHERWISE SPECIFIED		DIMENSIONS ARE IN INCHES		TOLERANCES ON		FRACTIONS DECIMALS ANGLES		±.04 ±.010 ±0°30'	
DRAWN J.J.L.		DATE 18 NOV 58		CHECKED W.L.P. 14 JAN 59		APPROVED J.C.S. 14 JAN 59		DATE 18 NOV 58	
NEXT ASSY USED ON		NEXT ASSY USED ON		CHECKED		APPROVED		DATE	
*MOTOROLA-APPL		APPLICATION		APPROVED		DATE		SCALE	

MOTOROLA INC. ORDER NO. 14385-PC-58-A1 SIGNAL CORPS

POWER SUPPLY FOR B.F.O. ELECTRICAL & MECHANICAL INTERCHANGEABILITY GAGES

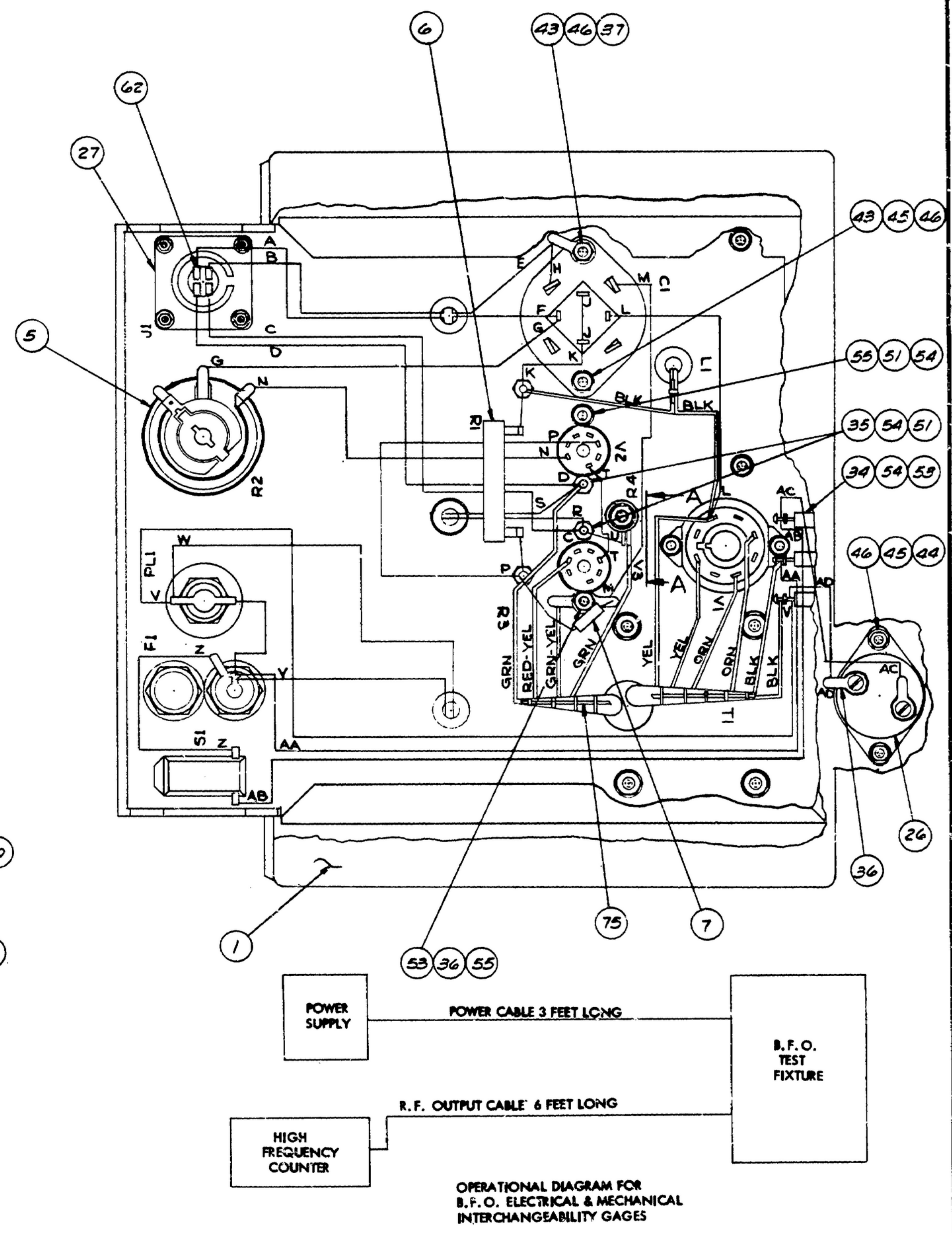
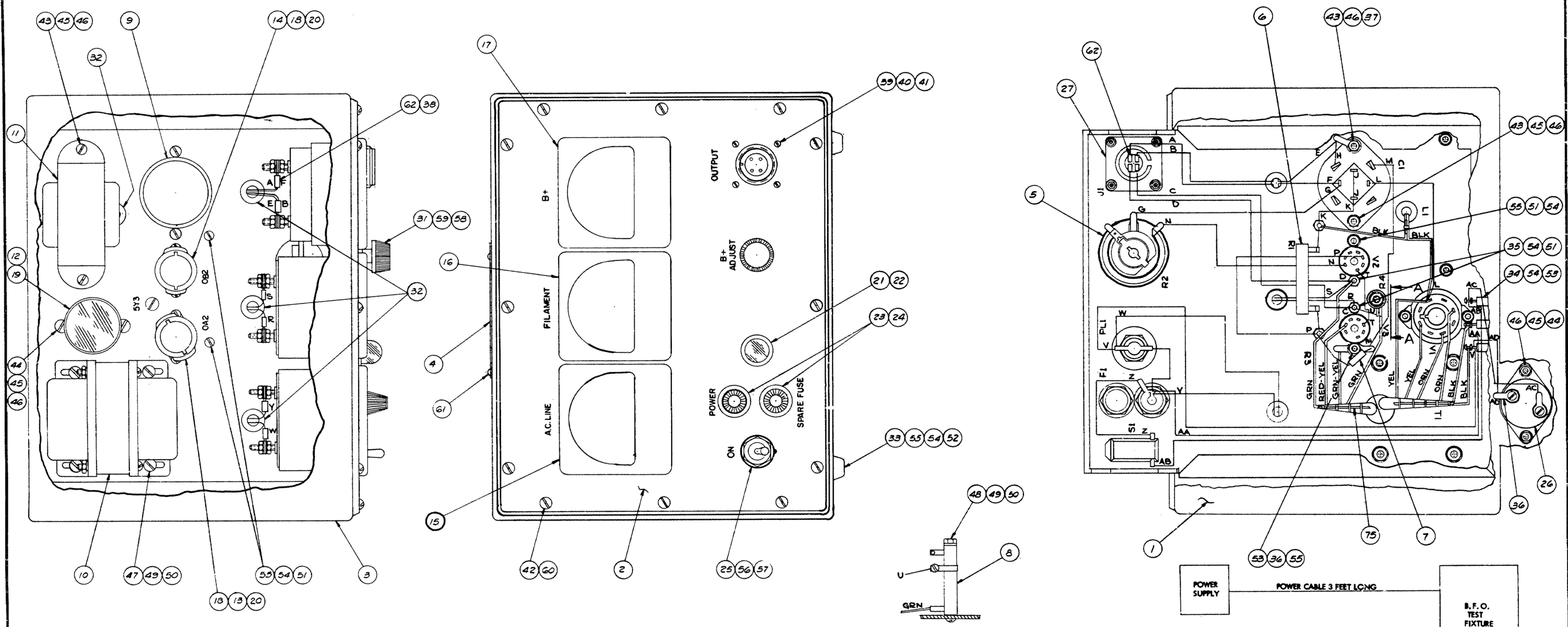
DEPARTMENT OF THE ARMY SIGNAL CORPS ENGINEERING LABORATORIES FORT MONMOUTH NEW JERSEY

SM-D-58791 SHEET 1 OF 7 SHEETS

WHEN REFERRING TO THIS DRAWING STATE DRAWING NO., APPLICABLE ISSUE SYMBOL, IF ANY, AND DATE.

REFER TO THE SPECIFICATION, OPERATIONAL, OR OTHER DATA AND DRAWINGS FOR THE PROPER USE OF THIS DRAWING. THIS DRAWING IS NOT TO BE USED FOR THE PRODUCTION OF A PHYSICAL PART UNLESS IT IS SPECIFICALLY IDENTIFIED AS SUCH IN THE DRAWING. THE PARTS LISTED IN THIS DRAWING ARE NOT TO BE USED FOR THE PRODUCTION OF A PHYSICAL PART UNLESS IT IS SPECIFICALLY IDENTIFIED AS SUCH IN THE DRAWING. THE PARTS LISTED IN THIS DRAWING ARE NOT TO BE USED FOR THE PRODUCTION OF A PHYSICAL PART UNLESS IT IS SPECIFICALLY IDENTIFIED AS SUCH IN THE DRAWING.

*FOR INFORMATION ONLY, CONTRACTOR MAY AT HIS OPTION DEVIATE FROM THESE PROCESS DETAILS.



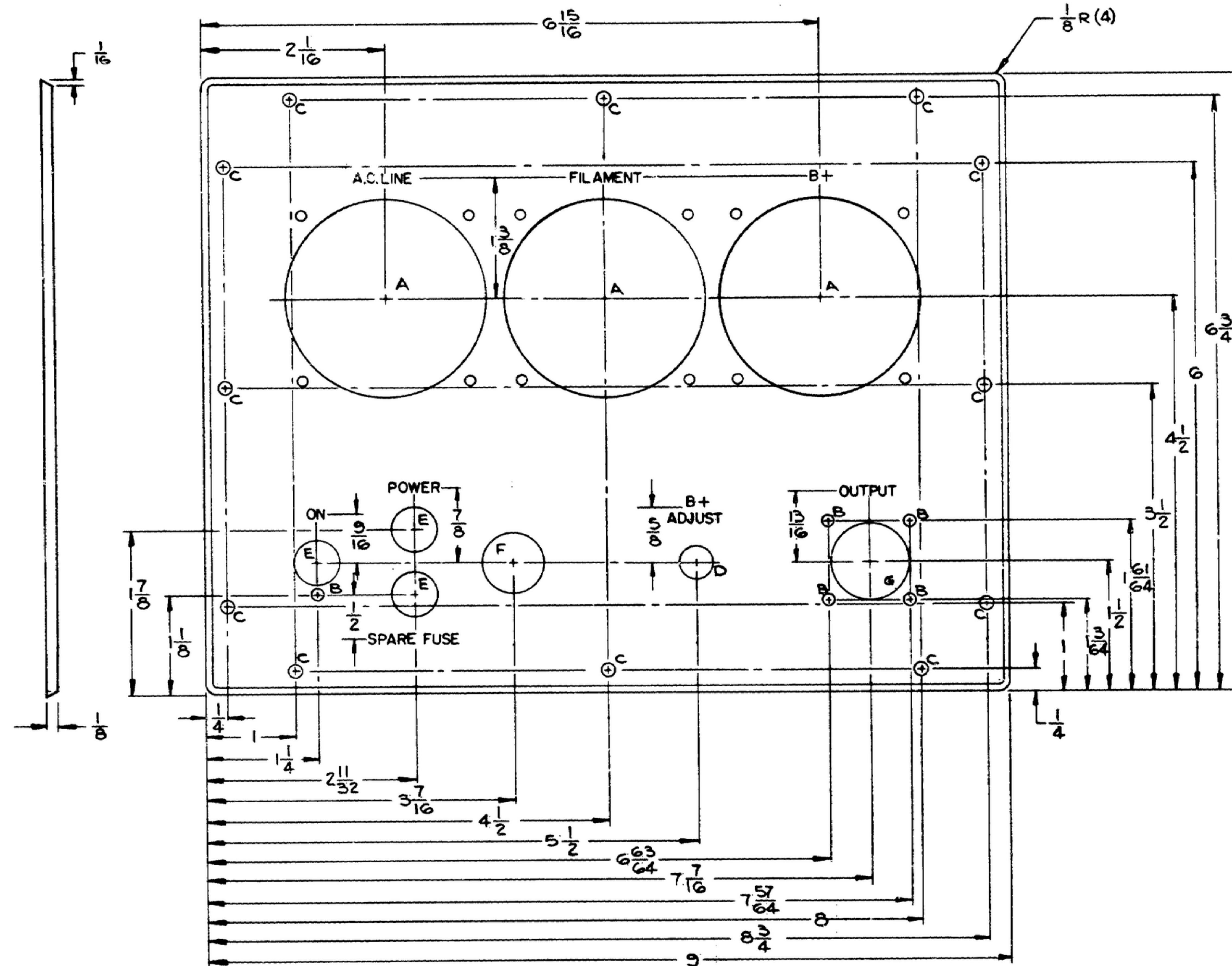
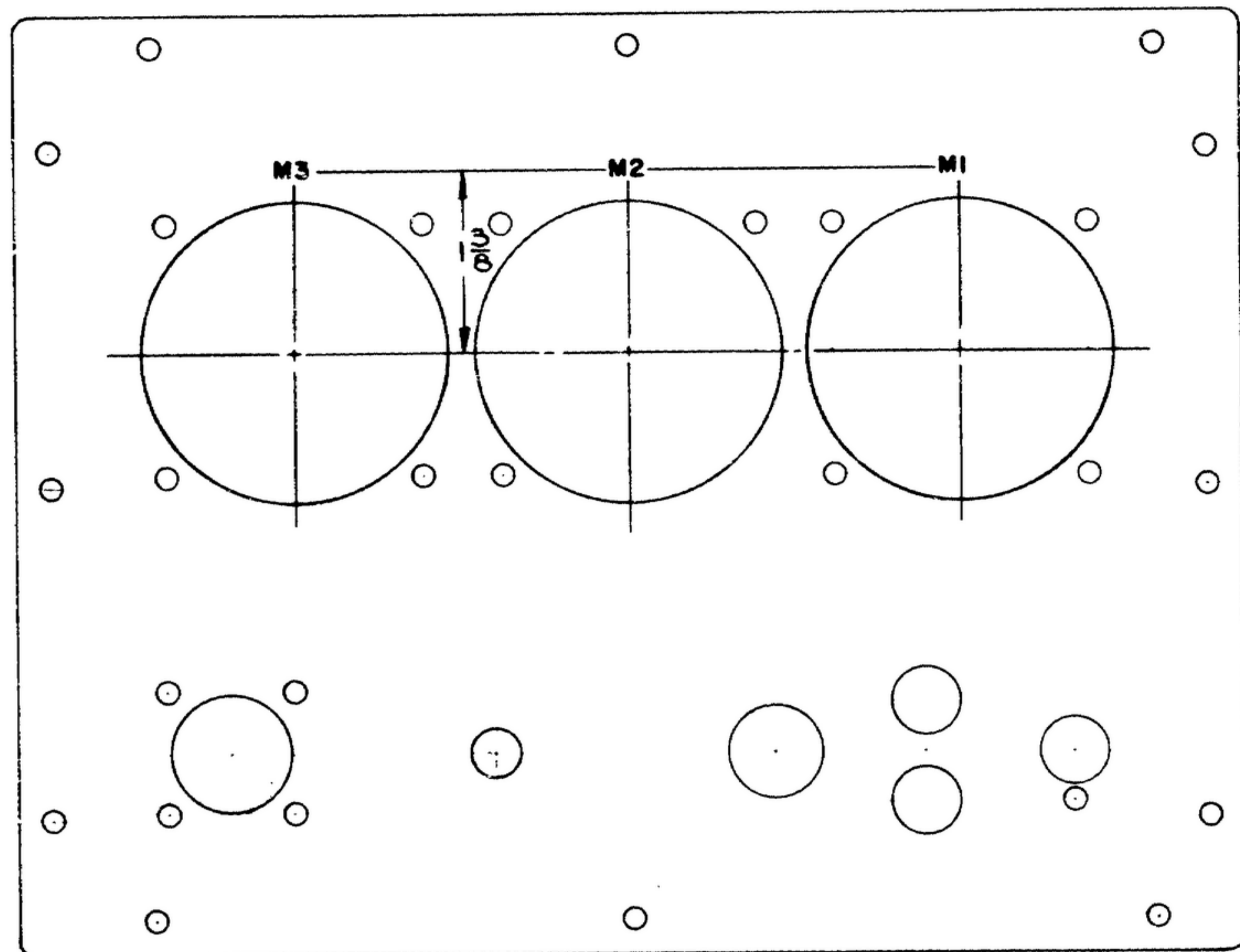
WIRE ITEM NO.	DESCRIPTION	LENGTH (INCH)	NO. OF PLACES	TOTAL LENGTH	SLEEVING REQD (C.A.)	NOTE
A 69	WIRE MW-C22(7)UB	4	1	4	NONE	
B 69	UB	2	1	2		
C 70	U2	1	1	1		
D 70	U2	1 1/2	1	1 1/2		
E 70	U2	4 1/2	1	4 1/2		
F 71	U0	1 1/2	1	1 1/2		
G 71	U0	4 1/2	1	4 1/2		
H 71	U0	2 3/4	1	2 3/4		
J 70	U2	3 3/4	1	3 3/4		
K 73	WIRE MW-C16(19)UB	3	1	3		
L 74	WIRE #16	3/4	3	2 1/4		5
M 72	WIRE MW-C16(19)U2	3 1/2	1	3 1/2		
N 72	WIRE MW-C16(19)U2	3	1	3		

SEE SHEET 1 FOR LIST OF MATERIAL & NOTES.

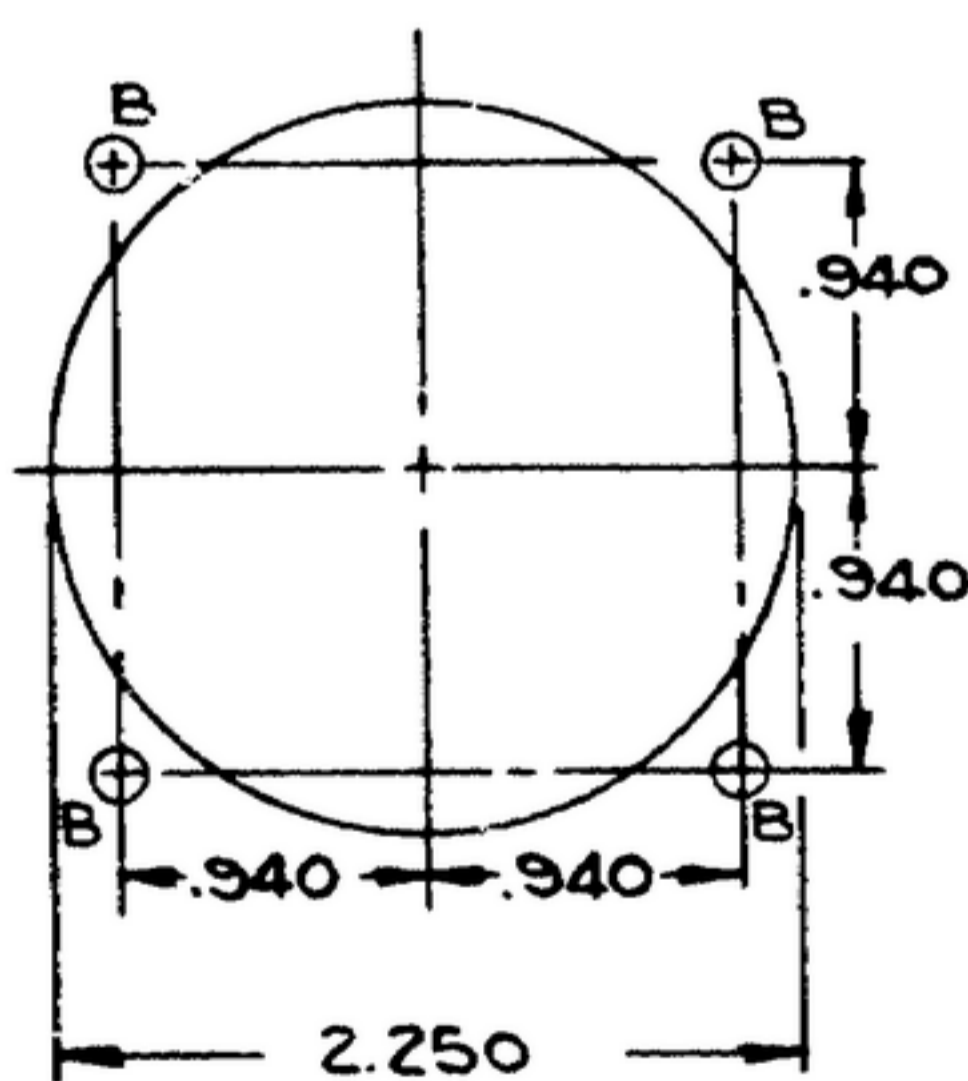
REV	PART NO.	DESCRIPTION	MATL.	MATL. SPEC.
SEE TABLE FOR PART NO. LIST OF MATERIAL				
		UNLESS OTHERWISE SPECIFIED DIMENSIONS ARE IN INCHES TOLERANCES ON FRACTIONS DECIMALS ANGLES ± 1/64 ± .010 ± 0°30'	MOTOROLA INC. ORDER NO. 14385-PC-58-A1 SIGNAL CORPS	
		DRAWN E.D.H.	REVIEWED XXX	
		DATE 12 NOV 58	APPROVED R.F.X	
		CHECKED W.J.P. 12 JAN 59	DATE 12 NOV 58	
NEXT ASSY USED ON		NEXT ASSY USED ON	SCALE:	
* MOTOROLA APPL		APPLICATION	WHEN REFERRING TO THIS DRAWING STATE DRAWING NO., APPLICABLE ISSUE SYMBOL, IF ANY, AND DATE.	

POWER SUPPLY FOR B.F.O. ELECTRICAL & MECHANICAL INTERCHANGEABILITY GAGES
 DEPARTMENT OF THE ARMY SIGNAL CORPS ENGINEERING LABORATORIES
 FORT MONMOUTH NEW JERSEY
 SM-D-58791
 SHEET 2 OF 2 SHEETS

*FOR INFORMATION ONLY, CONTRACTOR MAY AT HIS OPTION DEVIATE FROM THESE PROCESS DETAILS.



- NOTES:
13. MARKINGS ARE TO BE:
 - A. ENGRAVED AFTER PAINTING.
 - B. 7/64 HIGH
 - C. SYMMETRICAL ABOUT THE RESPECTIVE CENTERLINES
 - D. FILLED WITH WHITE LACQUER SILK, AS SUPPLIED BY LAKE CHEMICAL, CHICAGO, ILL.
 - E. MARKING ON BACK OF PANEL TO BE 1/8 HIGH ENDBER STAMPED PERMANENT BLACK CONDENSED COVERCOATED WITH M. F. P. VARNISH #7475, AS SUPPLIED BY BROOKLYN VARNISH CO, BROOKLYN, N. Y.



DETAIL A

HOLE LEGEND		
SYM	DESCRIPTION	QTY
A	SEE DETAIL A	3
B	1/8 DIA THRU	17
C	5/32 DIA THRU	12
D	3/8 DIA THRU	1
E	1/2 DIA THRU	3
F	11/16 DIA THRU	1
G	7/8 DIA THRU	1

(2) PANEL

MATL: AL ALLOY 5052 TEMPER H-34 PER SPEC QQ-A-318.
 FINISH: CLEAN IN VAPOR OR SOLVENT TYPE DEGREASER
 HOT DICHROMAT DIP (IRIDITE #14), PRIME WITH ONE COAT
 ZINC CHROMATE PRIMER TYPE 2 PER SPEC MIL-P-6889
 APPLIED PER SPEC MIL-P-6808, FINISH WITH SEMI-GLOSS
 ENAMEL PER SPEC MIL-E-11857, CLASS B, MEETING
 REQUIREMENTS OF FED. SPEC TT-P-141, COLOR GRAY
 #2610 PER FED. SPEC TT-C-595.

REQD	PART NO.	DESCRIPTION	MATL	MATL SPEC
SEE TABLE FOR PART NO.		LIST OF MATERIAL		
		MOTOROLA-ING.		
		ORDER NO. 14385-PC-58-A1		
		SIGNAL CORPS		
		REVIEWED XXX		
		APPROVED		
		DATE 8 AUG 58		
		CHECKED W.P. 14 JAN 59		
		APPROVED		
		DATE 8 AUG 58		
		SCALE 1/1		

UNLESS OTHERWISE SPECIFIED	
DIMENSIONS ARE IN INCHES	
TOLERANCES ON FRACTIONS	DECIMALS ANGLES
± 1/64	± 0.010 ± 0°30'
DRAWN E.D.H.	DATE 8 AUG 58
CHECKED W.P. 14 JAN 59	DATE 8 AUG 58
APPROVED	DATE 8 AUG 58

POWER SUPPLY FOR B.F.O.
 ELECTRICAL & MECHANICAL
 INTERCHANGEABILITY GAGES

DEPARTMENT OF THE ARMY
 SIGNAL CORPS ENGINEERING
 LABORATORIES
 FORT MONMOUTH NEW JERSEY

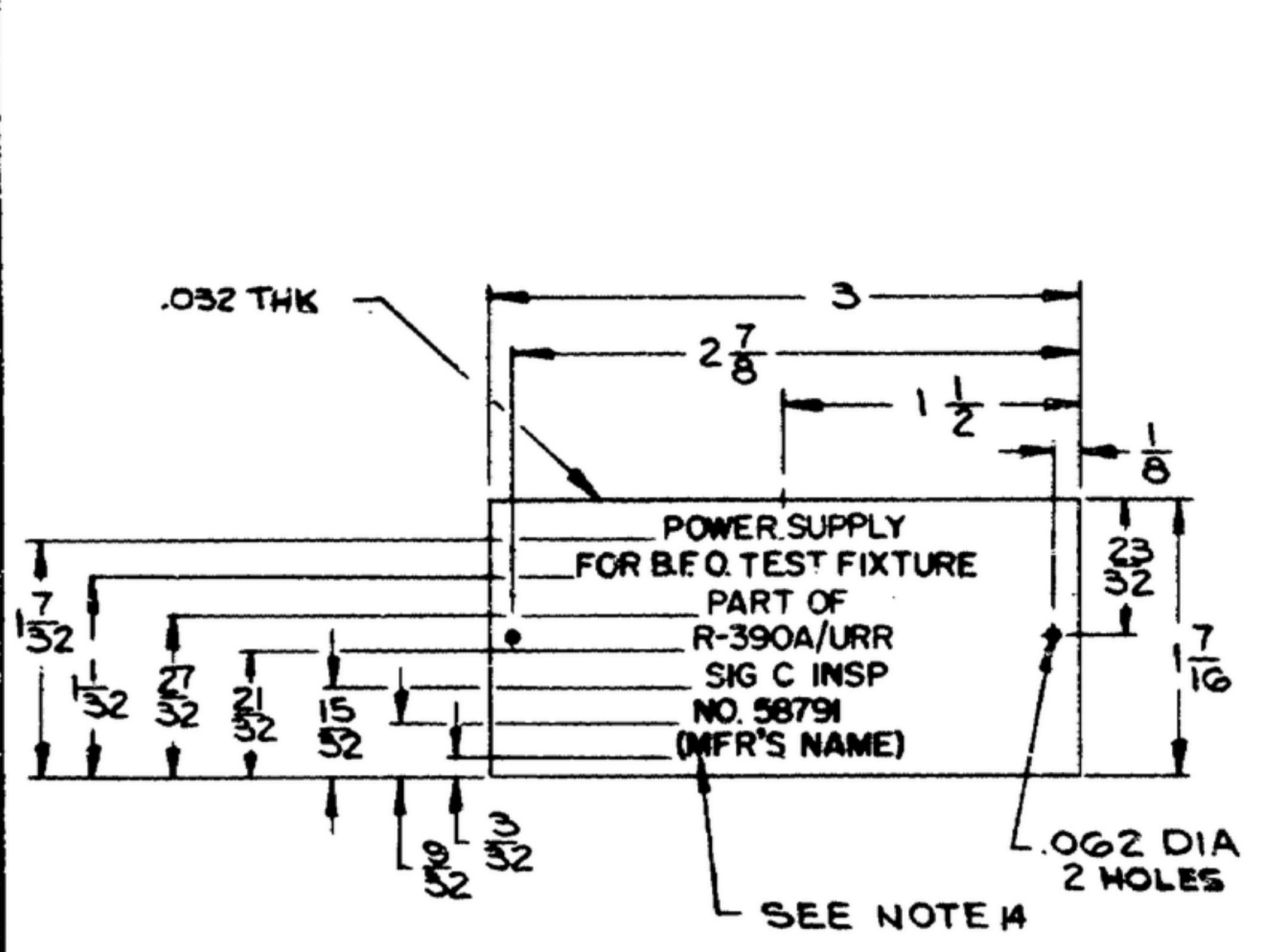
SM-D-58791
 SHEET 3 OF 7 SHEETS

UNLESS OTHERWISE SPECIFIED, DIMENSIONS ARE TO BE TAKEN FROM THE DRAWING OR FROM THE PART ITSELF. THE DRAWING DIMENSIONS SHALL PRECEDE THE PART DIMENSIONS. THE CONTRACTOR SHALL BE RESPONSIBLE FOR THE VERIFICATION OF THE DIMENSIONS OF THE PARTS AND FOR THE CORRECTION OF THE DIMENSIONS OF THE PARTS.

THIS DRAWING AND THE PARTS THEREOF ARE THE PROPERTY OF MOTOROLA INC. AND ARE LOANED TO YOU FOR YOUR USE. YOU SHALL NOT REPRODUCE OR TRANSMIT THIS DRAWING OR THE PARTS THEREOF IN ANY MANNER WITHOUT THE WRITTEN PERMISSION OF MOTOROLA INC.

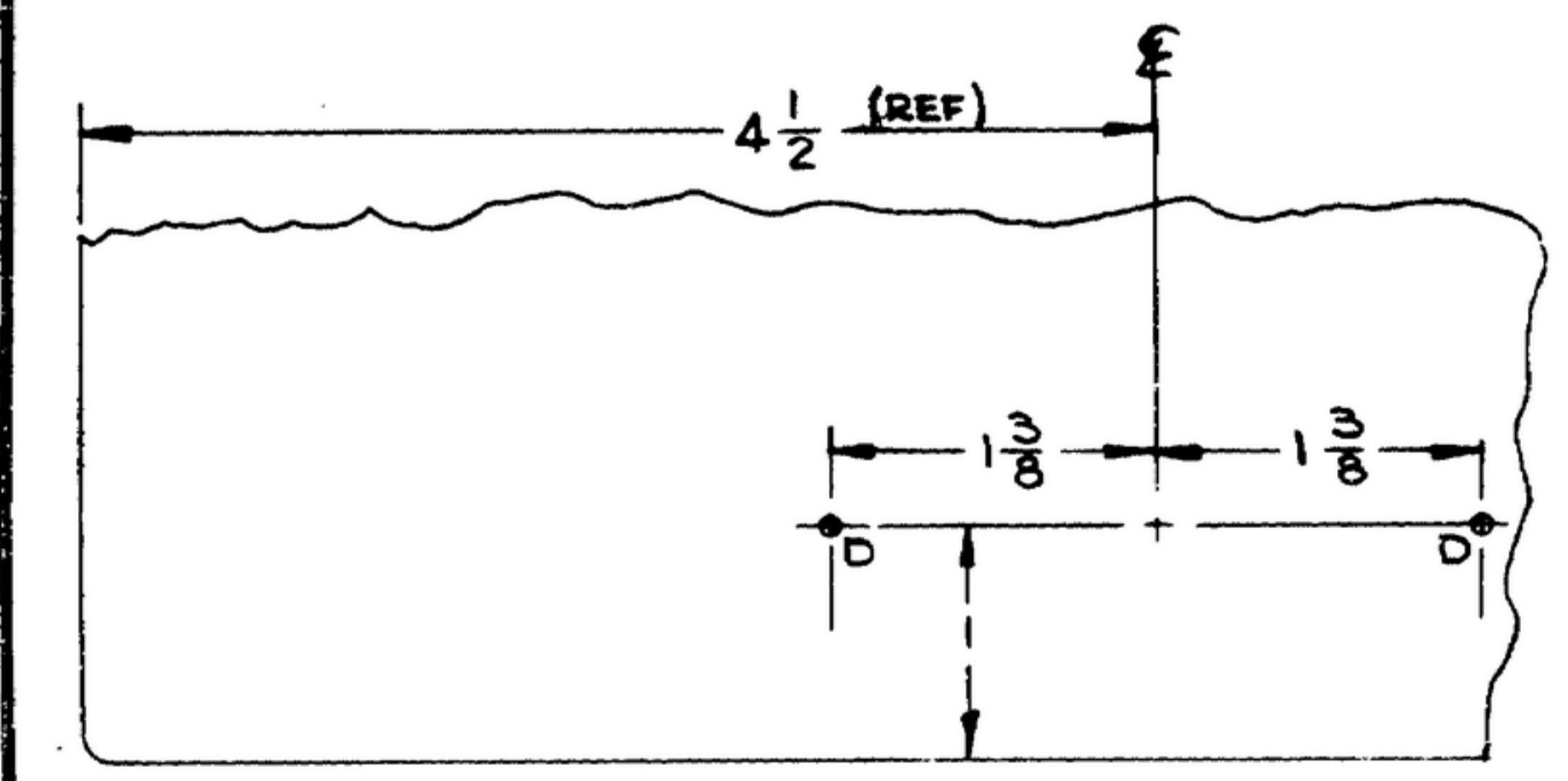
*FOR INFORMATION ONLY, CONTRACTOR MAY AT HIS OPTION DEVIATE FROM THESE PROCESS DETAILS.

SYN	DESCRIPTION	DATE	APPROVAL
ORIG SYM 155 A	REVISIONS	17 OCT 58	

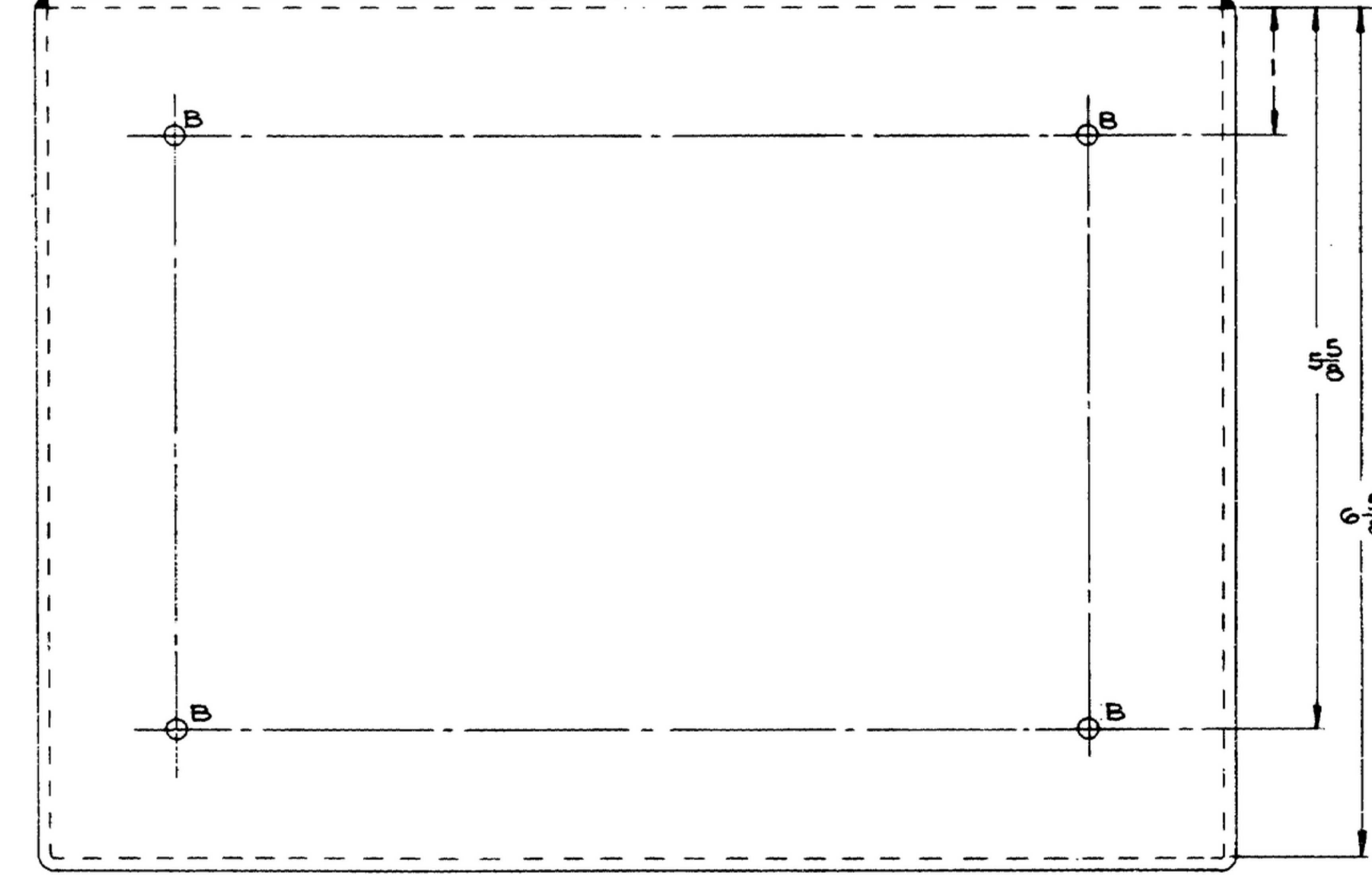
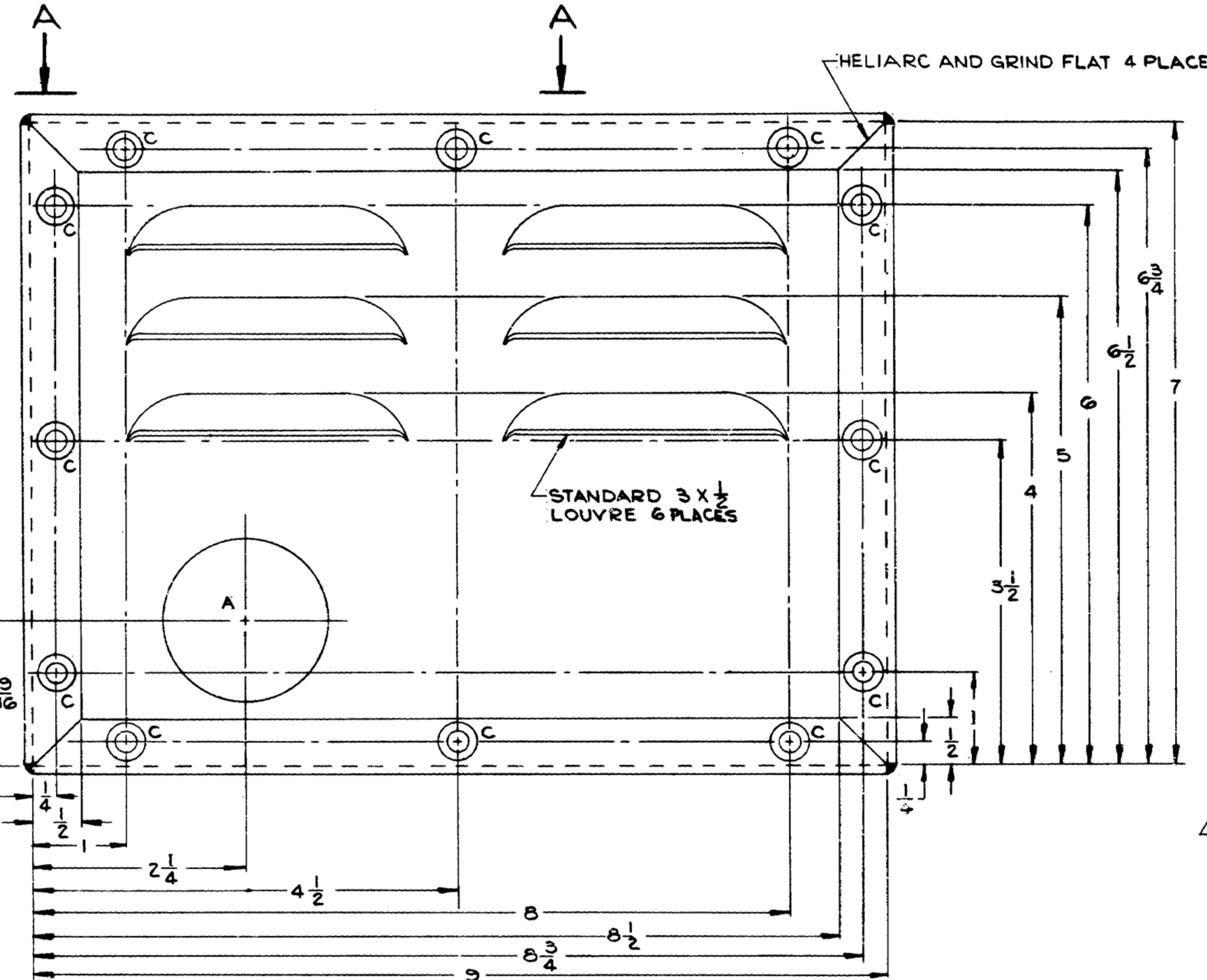


(4) NAMEPLATE

MATL: AL ALLOY 5052 TEMPER H34 PER SPEC QQ-A-388
 FIN: CHROMATE CL2, TYPE II PER SPEC QQ-Z-325.
 METAL STAMP CHARACTERS IN VERTICAL GOTHIC, 1/8 HIGH, SPACED & CENTERED AS SHOWN. AFTER FINISH HAS DRIED FILL CHARACTERS WITH P511B, PER SPEC MIL-F-14072.



VIEW A-A



HOLE LEGEND		
SYM	DESCRIPTION	QTY
A	1 3/4 DIA THRU	1
B	5/32 DIA THRU	4
C	REAM .217/.219 DIA THRU; C BORE 3/8 DIA .040 DEEP	12
D	.067 DIA THRU	2

NOTES:
 14. MFR. NAME SHALL READ MOTOROLA INC. SIZE & LOCATION AS SHOWN.

(3) CABINET

MATL: AL ALLOY 5052 TEMPER H34 PER SPEC QQ-A-318.
 FIN: CLEAN IN VAPOR OR SOLVENT TYPE DEGREASER.
 HOT DICHRONAT DIP (IRIDITE #14), PRIME WITH ONE COAT ZINC CHROMATE PRIMER TYPE I PER SPEC MIL-P-6889 APPLIED PER SPEC MIL-P-6808.
 FINISH WITH SEMI-GLOSS ENAMEL PER SPEC MIL-E-11851, CLASS B, MEETING REQUIREMENTS PER FED. SPEC TT-P-41, COLOR GRAY #2610 PER FED. SPEC TT-C-595.

REQD	PART NO.	DESCRIPTION	MATL	MATL SPEC
SEE TABLE FOR PART NO. LIST OF MATERIAL				

UNLESS OTHERWISE SPECIFIED			DIMENSIONS ARE IN INCHES			TOLERANCES ON FRACTIONS DECIMALS ANGLES			DRAWN E.D.H.			DATE 4 AUG 58			APPROVED [Signature]		
			± .010 ± 0°30'						SC-GL-57655			DATE 4 AUG 58			CHECKED W.J.P. 14 JAN 59		
NEXT ASSY USED ON			NEXT ASSY USED ON			APPROVED [Signature]			DATE 4 AUG 58			SCALE 1/1			WHEN REFERRING TO THIS DRAWING STATE DRAWING NO., APPLICABLE ISSUE SYMBOL, IF ANY, AND DATE.		

POWER SUPPLY FOR B.F.O. ELECTRICAL & MECHANICAL INTERCHANGEABILITY GAGES

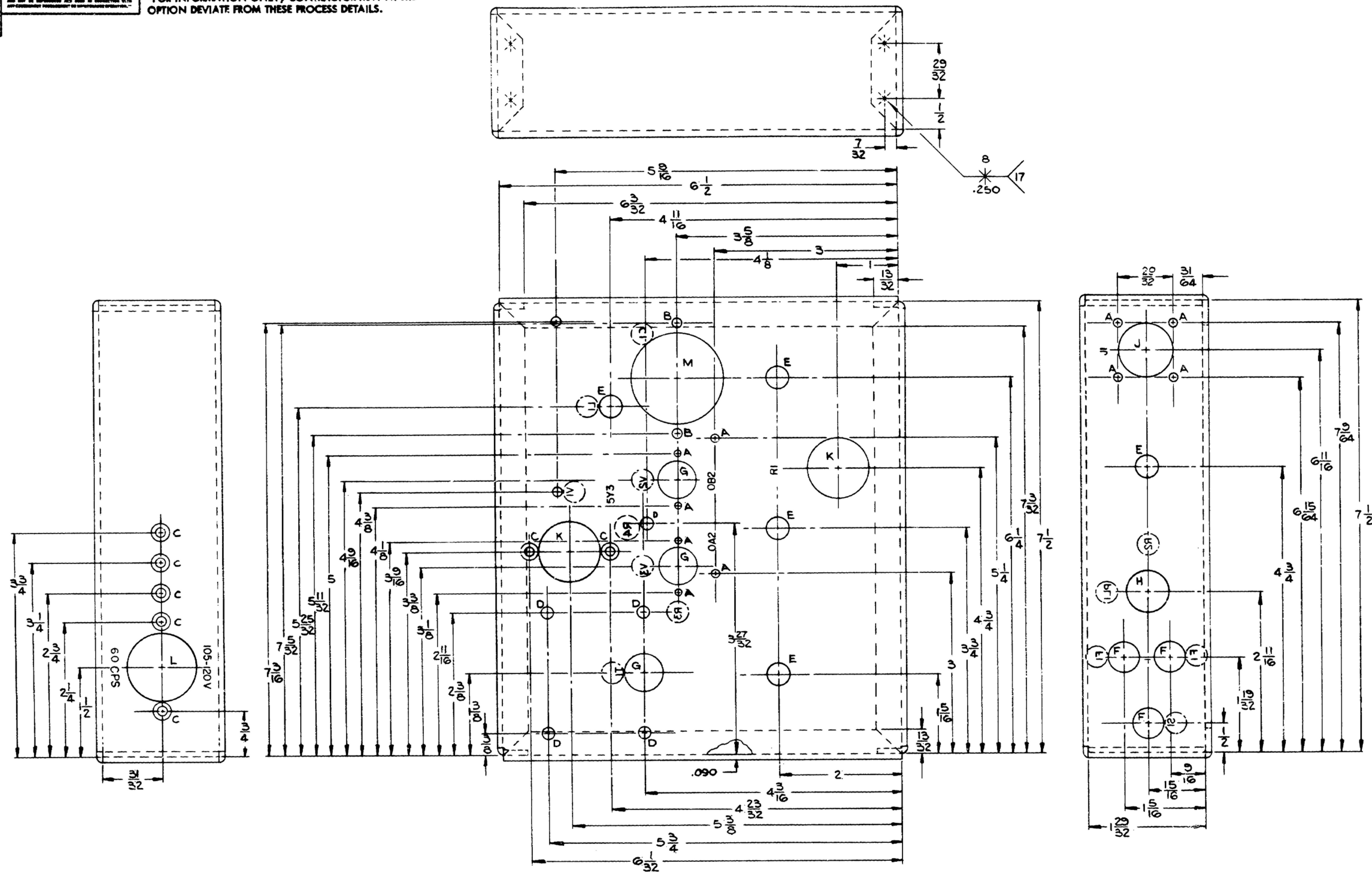
DEPARTMENT OF THE ARMY
 SIGNAL CORPS ENGINEERING LABORATORIES
 FORT MONMOUTH NEW JERSEY

SM-D-58791 SHEET 4 OF 7 SHEETS

UNLESS OTHERWISE SPECIFIED, DIMENSIONS ARE TO BE TAKEN FROM THE CENTERLINE OF THE PART UNLESS OTHERWISE SPECIFIED. DIMENSIONS ARE TO BE TAKEN FROM THE CENTERLINE OF THE PART UNLESS OTHERWISE SPECIFIED. DIMENSIONS ARE TO BE TAKEN FROM THE CENTERLINE OF THE PART UNLESS OTHERWISE SPECIFIED.

*FOR INFORMATION ONLY, CONTRACTOR MAY AT HIS OPTION DEVIATE FROM THESE PROCESS DETAILS.

SYM	DESCRIPTION	DATE	APPROVAL
ORIG	SYM 155 A	17 OCT 58	



- 15. BENDING RADII 3/32
- 16. MARKINGS TO BE:
 - A. RUBBER STAMPED, PERMANENT BLACK, CONDENSED GOTHIC STYLE 1/8 HIGH.
 - B. COVERED WITH M. F. D. VARNISH #7673, AS SUPPLIED BY BROOKLYN VARNISH CO, BROOKLYN, N. Y.
 - C. SYMMETRICAL ABOUT THEIR RESPECTIVE CENTERLINES.
 - D. MARKING IN ARE INSIDE CHASSIS
- 17. SPOTWELD PER SPEC MIL-W-6858.

HOLE LEGEND		
SYM	DESCRIPTION	QTY
A	1/8 DIA THRU	10
B	5/32 DIA THRU	4
C	.138 DIA ± C SINK 80° TO 279/257	7
D	3/16 DIA THRU	5
E	3/8 DIA THRU	5
F	1/2 DIA THRU	3
G	5/8 DIA THRU	3
H	11/16 DIA THRU	1
J	7/8 DIA THRU	1
K	1 DIA THRU	2
L	1 1/8 DIA THRU	1
M	1 1/2 DIA THRU	1

① CHASSIS
 MATERIAL: AL ALLOY 5052, TEMPER H-34 PER SPEC. QQ-A-318.
 FINISH: ZINC PL, CL2, TYPE II PER SPEC QQ-Z-325.

REQD	PART NO.	DESCRIPTION	MATL	MATL SPEC
SEE TABLE FOR PART NO.		LIST OF MATERIAL		

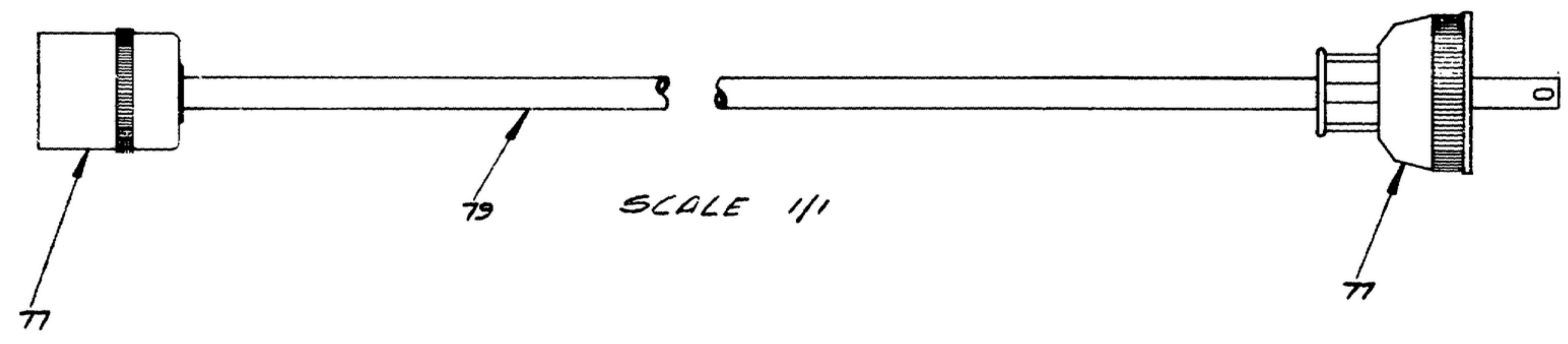
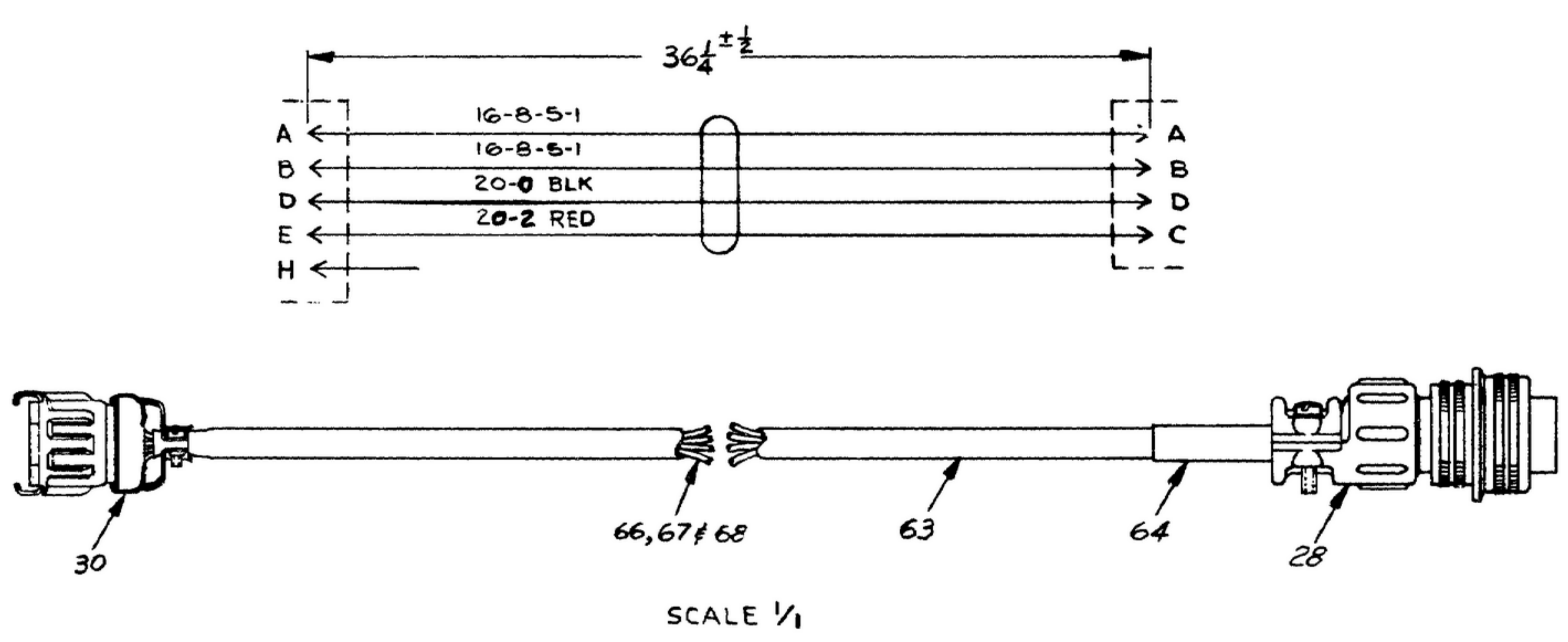
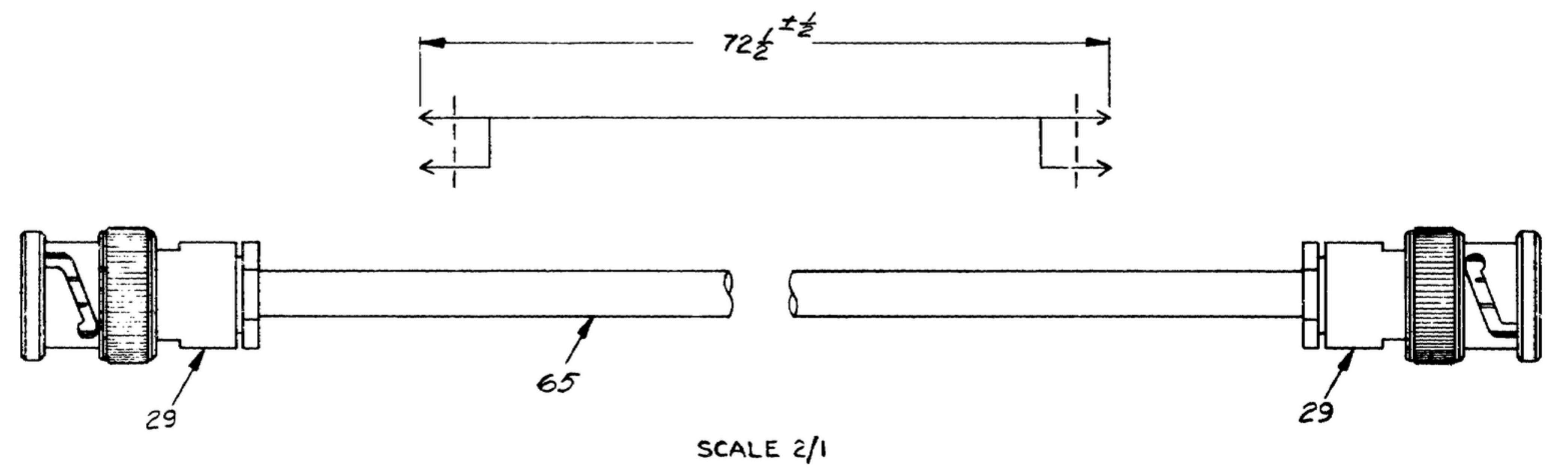
UNLESS OTHERWISE SPECIFIED		MOTOROLA-INC.	
DIMENSIONS ARE IN INCHES		ORDER NO. 14385-PC-58-A1	
TOLERANCES ON FRACTIONS	DECIMALS	ANGLES	SIGNAL CORPS
± 1/64	± .010	± 0°30'	
DRAWN E.D.H.	DATE 5 AUG 58	REVIEWED XXX	APPROVED
CHECKED W.J.P. 14 JAN 59	DATE 5 AUG 58	APPROVED	
NEXT ASSY USED ON	NEXT ASSY USED ON	CHECKED	DATE 5 AUG 58
* MOTOROLA-APPL	APPLICATION	APPROVED	DATE 5 AUG 58

POWER SUPPLY FOR B.F.O. ELECTRICAL & MECHANICAL INTERCHANGEABILITY GAGES		DEPARTMENT OF THE ARMY SIGNAL CORPS ENGINEERING LABORATORIES
FORT MONMOUTH NEW JERSEY		SM-D-58791
SHEET 5 OF 7 SHEETS		

OTHER: FROM APPROVED DRAWINGS, SPECIFICATIONS, OR OTHER DATA ARE USED FOR ANY PURPOSE OTHER THAN AS INDICATED BY THE DRAWING. THE CONTRACTOR SHALL BE RESPONSIBLE FOR THE PROPER INTERPRETATION OF THE DRAWING AND FOR THE PROPER CONSTRUCTION OF THE PARTS THEREOF. THE CONTRACTOR SHALL BE RESPONSIBLE FOR THE PROPER INTERPRETATION OF THE DRAWING AND FOR THE PROPER CONSTRUCTION OF THE PARTS THEREOF.

*THIS DRAWING AND THE PROCESS BY THE CONTRACTOR AND NOT BE APPROVED AND USED IN CONNECTION WITH ANY OTHER PROCESS OR PROCEDURE.

*FOR INFORMATION ONLY, CONTRACTOR MAY AT HIS OPTION DEVIATE FROM THESE PROCESS DETAILS.



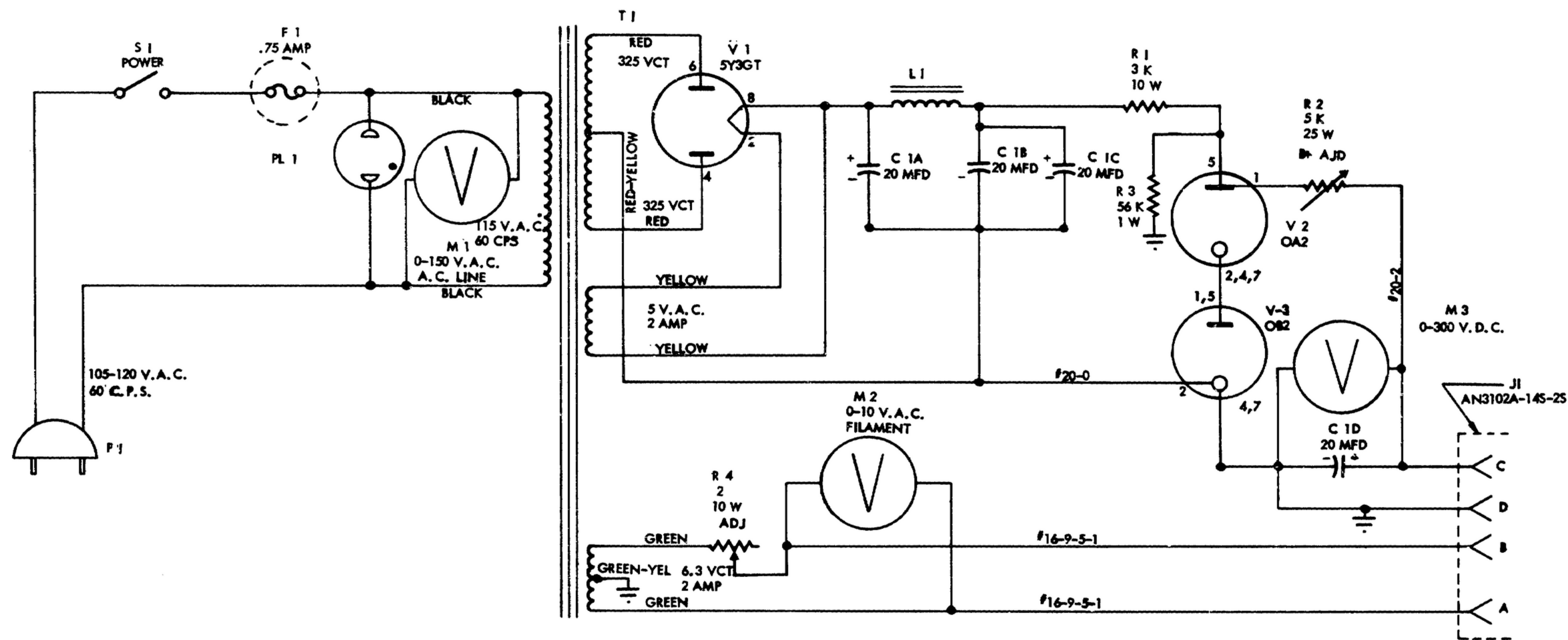
SYM.	PART NO.	DESCRIPTION	DATE	APPROVAL
SEE TABLE FOR PART NO. LIST OF MATERIAL				
UNLESS OTHERWISE SPECIFIED		MOTOROLA INC.		
DIMENSIONS ARE IN INCHES		ORDER NO. 14355-PC-58-A1		
TOLERANCES ON FRACTIONS DECIMALS ANGLES		SIGNAL CORPS		
± 1/64	± .010	± 0°30'	REVIEWED XXX	
DRAWN C W. J. P.		APPROVED		
DATE 24 SEPT 58		DATE 24 SEPT 58		
CHECKED W. J. P. 14 JAN 59		DATE 24 SEPT 58		
NEXT ASSY USED ON		APPLICATION		
NEXT ASSY USED ON		APPROVED		
NEXT ASSY USED ON		DATE 24 SEPT 58		

POWER SUPPLY FOR B.F.O. ELECTRICAL & MECHANICAL INTERCHANGEABILITY GAGES

DEPARTMENT OF THE ARMY SIGNAL CORPS ENGINEERING LABORATORIES FORT MONMOUTH NEW JERSEY

SM-D-58791 SHEET 6 OF 7 SHEETS

*FOR INFORMATION ONLY, CONTRACTOR MAY AT HIS OPTION DEVIATE FROM THESE PROCESS DETAILS.



NOTES:
 1. UNLESS OTHERWISE SHOWN RESISTORS ARE IN OHMS, 1/2 W,
 5%; CAPACITORS ARE IN UUF; INDUCTORS ARE IN UH,

SCHEMATIC FOR POWER SUPPLY OF B.F.O. TEST FIXTURE

REQD	PART NO.	DESCRIPTION	NATL	NATL SPEC
SEE TABLE FOR PART NO.		LIST OF MATERIAL		

UNLESS OTHERWISE SPECIFIED			MOTOROLA INC.	
DIMENSIONS ARE IN INCHES			ORDER NO.	
TOLERANCES ON FRACTIONS DECIMALS ANGLES			14885-PC-58-A1	
± 1/64 ± .010 ± 0°30'			SIGNAL CORPS	
DRAWN E.D.H.			REVIEWED X X X	
DATE 5 AUG 58			APPROVED	
CHECKED W.L.P. JAN 59			DATE 5 AUG 58	
APPROVED [Signature]			SCALE	
NEXT ASSY USED ON	NEXT ASSY USED ON	APPLICATION	POWER SUPPLY FOR B.F.O. ELECTRICAL & MECHANICAL INTERCHANGEABILITY GAGES	
MOTOROLA-APPL			DEPARTMENT OF THE ARMY SIGNAL CORPS ENGINEERING LABORATORIES FORT MONMOUTH NEW JERSEY	
			SMD-58791 SHEET 7 OF 7 SHEETS	

WHEN REFERRING TO THIS DRAWING STATE DRAWING NO., APPLICABLE ISSUE SYMBOL, IF ANY, AND DATE.