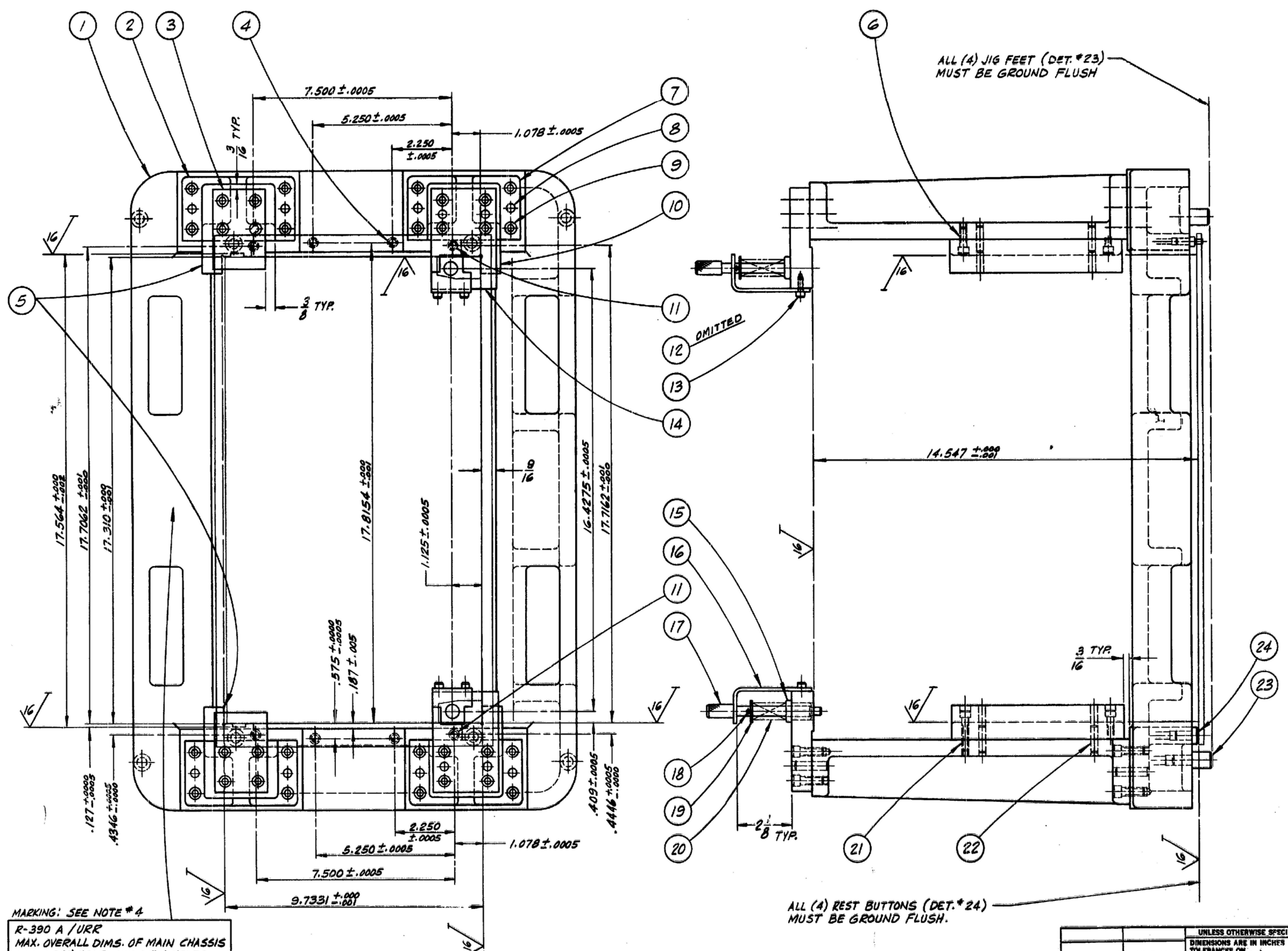


NOTE:
SQUARENESS AND PARALLELISM OF ALL
FUNCTIONING, GAGING, AND LOCATING SURFACES
MUST BE HELD WITHIN .0005 T.I.R.



- NOTES:
- GAGE TO BE MADE PER MIL-G-13451 (SIG. C.)
 - MECHANICAL FITS SHALL BE PER SPEC. MIL-G-10944.
 - MATERIAL SPECS. PER QQ-S-00778 (ARMY ORD.) CLASS FS-AZ.
 - METAL STAMP OR ENGRAVE USING 1/8" GOTHIC CHARACTERS.
 - ALUMINUM SAND CASTING ALLOY #319-T6 PER SPEC. QQ-A-601A (AMENDMENT #3).
 - PROTECTIVE FINISH SHALL BE APPLIED TO THE NON-FUNCTIONING, NON GAGING, AND NON LOCATING SURFACES. BLACK PREFERRED PER MIL-G-10944.
 - BREAK ALL UNNECESSARY SHARP EDGES AND CORNERS.
 - ALL THREADS ARE PER DEPT. OF COMM. HANDBOOK # H-28.
 - ALUMINUM 24 ST 4 PER SPEC. QQ-A-362.
 - STEEL, BAR, HOT ROLLED (NORMALIZED) FS-1010 TO FS-1095 PER SPEC. QQ-S-633.
 - SUPPLIED BY ACME INDUSTRIAL CO. CHICAGO, ILL. CAT. NO. # S-053 OR EQUIVALENT.
 - THIS GAGE WILL CHECK DWG. # SM-D-

MARKING: SEE NOTE #4

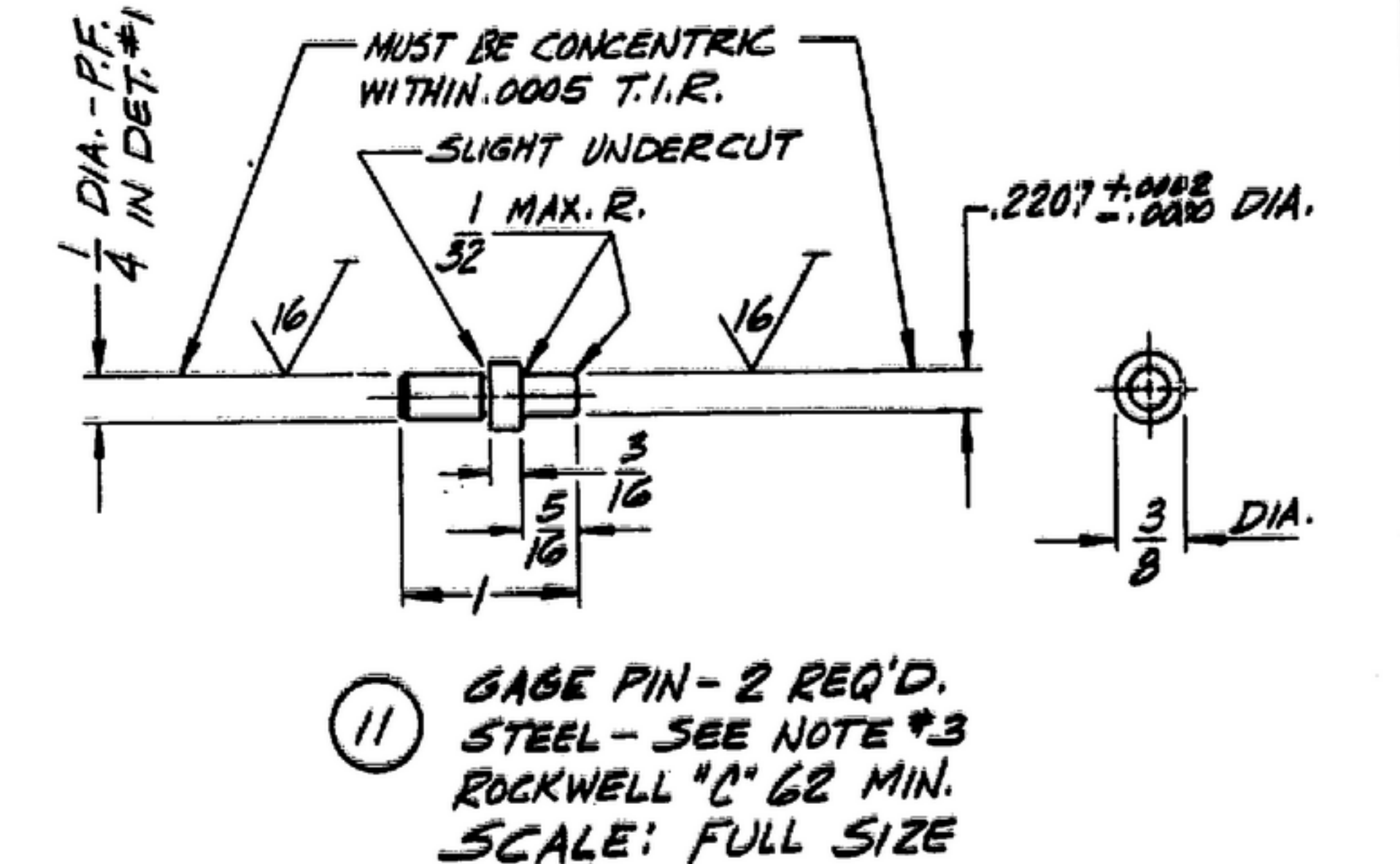
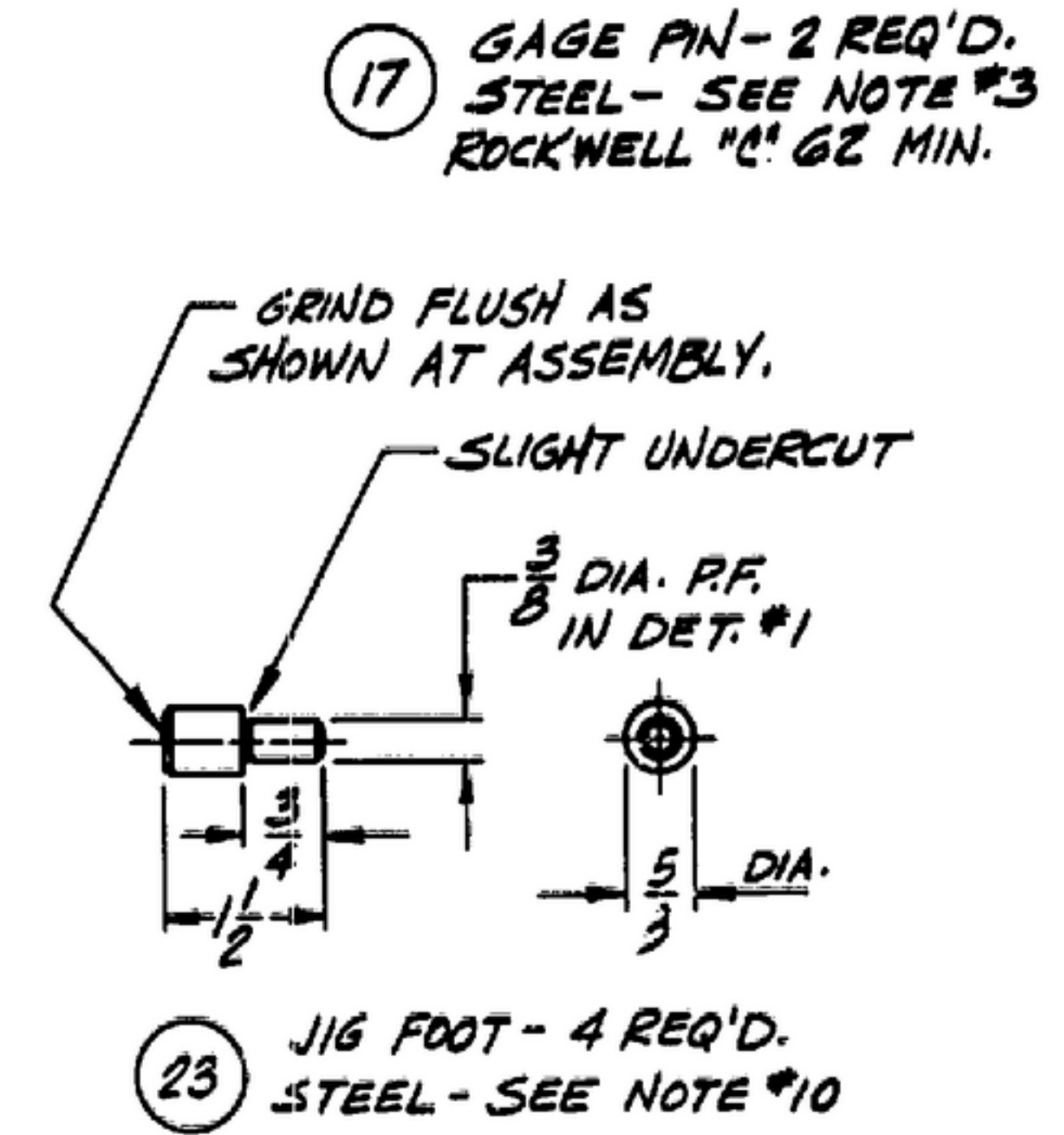
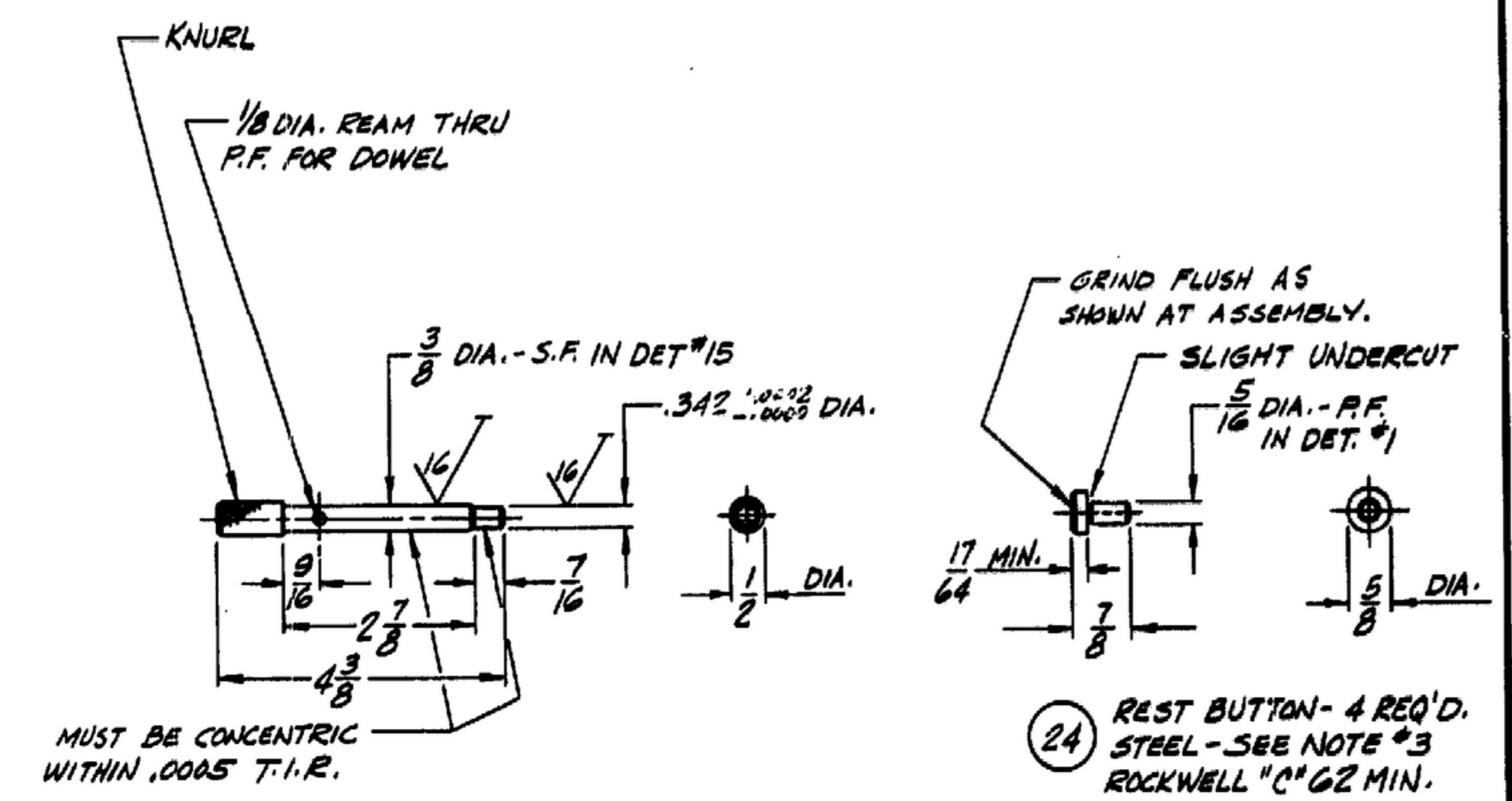
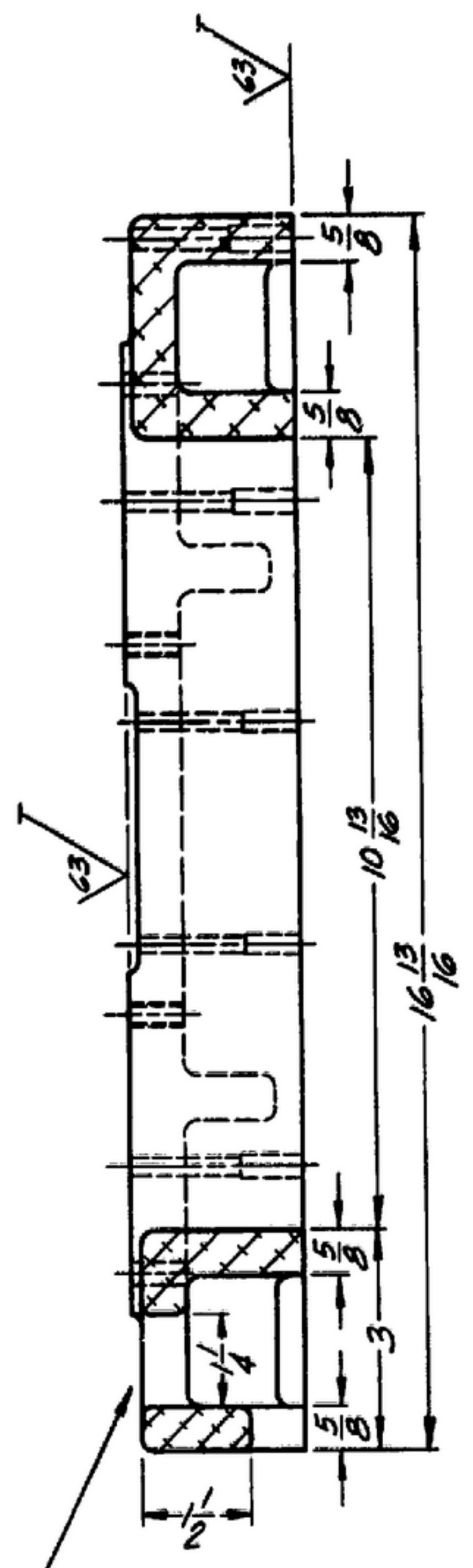
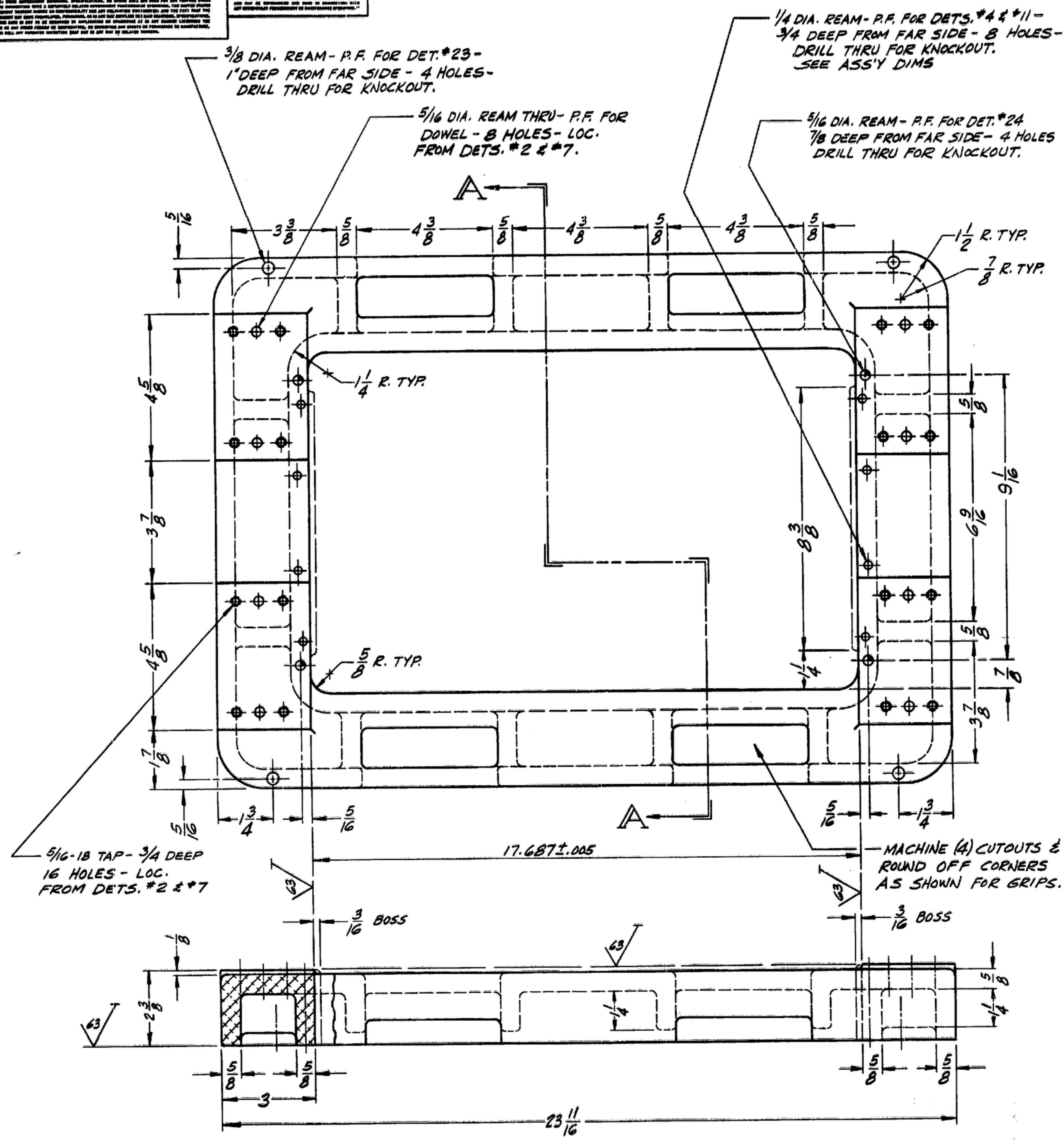
R-390 A / URR
MAX. OVERALL DIMS. OF MAIN CHASSIS
LOC. OF (2) REAR GUIDE PIN HOLES
LOC. OF (8) PANEL MTG. SLOTS
SIG. C. INSP.
58796
MFRS. NAME OR SYMBOL

QTY	DESCRIPTION	MATERIAL	FINISHED SIZE	SMT	NOTE
24	4	-24 REST BUTTON	3/8 DIA. x 7/8 LG.	2	3
23	4	-23 JIG FOOT	5/8 DIA. x 1 1/2 LG.	2	10
22	8	-22 DOWEL	1/4 DIA. x 1 LG.	1	+
21	8	-21 SOC. HD. CAPSCR.	1/4-20 UNF x 1 1/4 LG.	1	8
20	2	-20 SPRING TO SUIT	AS REQ'D.	1	+
19	2	-19 SAE PLAIN WASHER	3/8 I.D.	1	+
18	2	-18 DOWEL	1/8 DIA. x 5/8 LG.	1	+
17	2	-17 GAGE PIN	STEEL 1/2 DIA. x 4 3/8 LG.	2	3
16	2	-16 GAGE PIN RETAINER	ALUMINUM 1/8 x 1 1/2 x 3/8	3	9
15	2	-15 A.S.A. SH'LDR. P.F. DR. JIG BUSH	3/8 ID x 5/8 OD x 1 LG.	1	11
14	2	-14 GAGE BLOCK	7/8 x 2 1/2 x 3 3/4	3	3
13	4	-13 SOC. HD. CAPSCR.	#10-32 UNF x 1 1/2 LG.	1	8
12	+	-12 OMITTED		+	+
11	2	-11 GAGE PIN	3/8 DIA. x 1 LG.	2	3
10	2	-10 GAGE BLOCK	1 1/4 x 1 1/2 x 6 1/2	3	3
9	32	-9 SOC. HD. CAPSCR.	5/16-18 UNF x 7/8 LG.	1	8
8	12	-8 DOWEL	STEEL 5/16 DIA. x 1 1/4 LG.	1	+
7	2	-7 BRACKET	ALUMINUM CASTING	3	5
6	8	-6 SOC. HD. CAPSCR.	1/4-20 UNF x 3/4 LG.	1	8
5	2	-5 GAGE BLOCK	1 1/4 x 1 1/2 x 6 1/2	3	3
4	6	-4 GAGE PIN	3/8 DIA. x 1 LG.	2	3
3	2	-3 GAGE BLOCK	STEEL 7/8 x 2 x 3	3	3
2	?	-2 BRACKET	ALUMINUM CASTING	3	5
		SHD-58796-1 BASE	ALUMINUM CASTING	2	5

UNLESS OTHERWISE SPECIFIED DIMENSIONS ARE IN INCHES TOLERANCES ON FRACTIONS DECIMALS ANGLES ± 1/64 ± .005 ± 0°30'		MOTOROLA INC. ORDER NO. 14385-PC-58-11-(51) SIGNAL CORPS	GAGE TO CHECK MAX. OVERALL DIMS. OF MAIN CHASSIS, LOC OF (2) REAR GUIDE PIN HOLES, AND LOC. OF (8) PANEL MOUNTING SLOTS. R-390 A / URR	DEPARTMENT OF THE ARMY SIGNAL CORPS ENGINEERING LABORATORIES Ft. Monmouth, New Jersey
DRAWN J. MACH	REVIEWED xxy	APPROVED M H	DATE 9 JULY 1958	SCALE HALF
DATE 7-9-58	CHECKED BOL	APPROVED RFA	DATE 9 JULY 1958	SCALE HALF
APPLICATION	USED ON	CHECKED	DATE	SCALE

UNLESS OTHERWISE SPECIFIED DIMENSIONS ARE IN INCHES FRACTIONS DECIMALS ANGLES ± 1/64 ± .005 ± 0°30'

NOTE: ALL FILLETS & RADII ARE 3/16 UNLESS OTHERWISE SPECIFIED.



1 BASE - 1 REQ'D. ALUMINUM SAND CASTING SEE NOTE #5

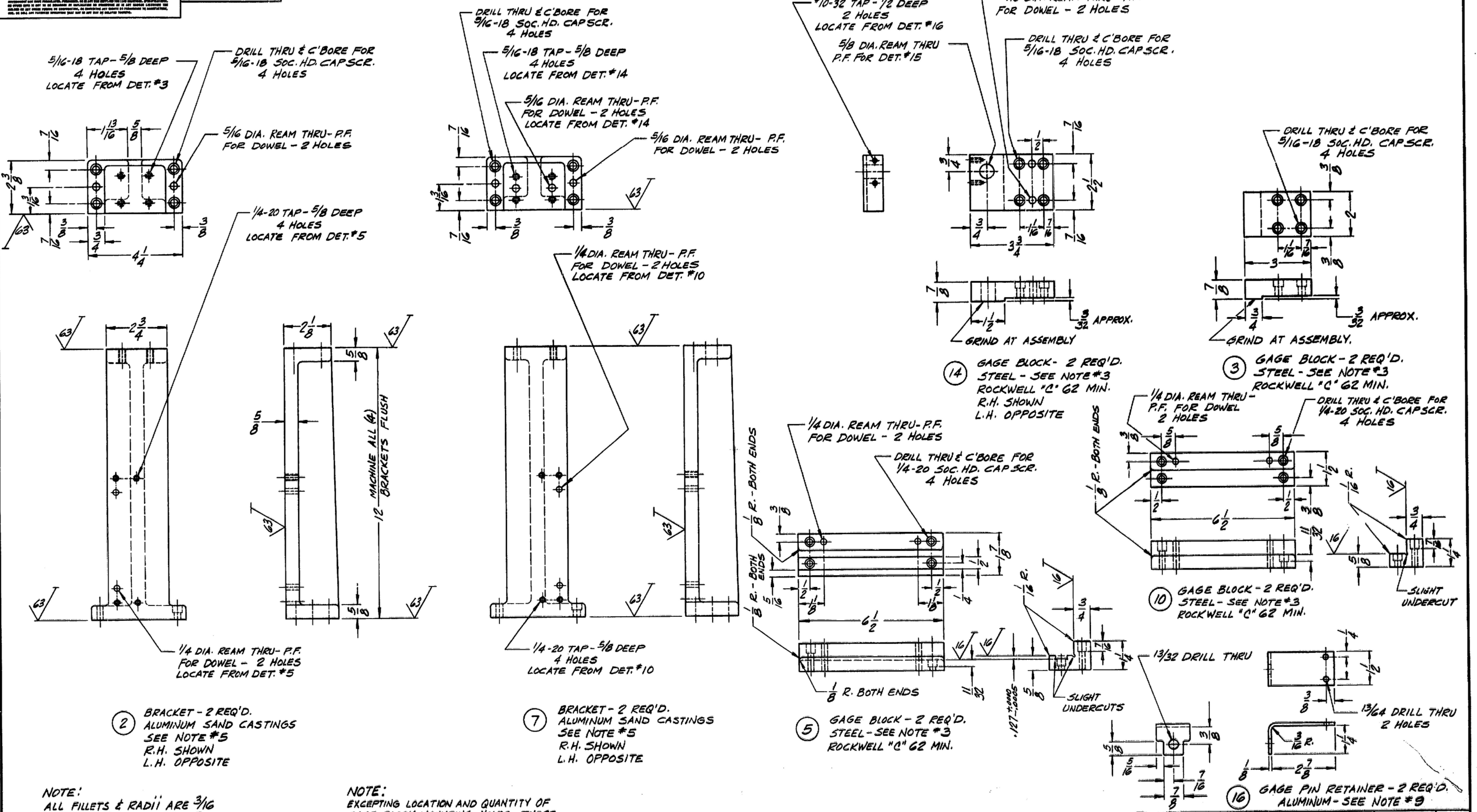
4 GAGE PIN - 6 REQ'D. STEEL - SEE NOTE #3 ROCKWELL "C" 62 MIN. SCALE: FULL SIZE

PART NO.		DESCRIPTION	MATL	MATL SPEC
LIST OF MATERIAL				
UNLESS OTHERWISE SPECIFIED		MOTOROLA INC.		
DIMENSIONS ARE IN INCHES		ORDER NO. 14385-PC-58-A1(8)		
FRACTIONS DECIMALS ANGLES		SIGNAL CORPS		
± 1/64 ± .005 ± 0°30'		REVIEWED XXX		
DRAWN J. MACH		APPROVED M.H.		
DATE 7-9-58		DATE 13 JULY 1958		
CHECKED ROL		SCALE HALF		
APPROVED R.F.J.		SHEET 2 OF 3		

GAGE TO CHECK
 MAX. OVERALL DIMS. OF MAIN CHASSIS, LOC. OF (2) REAR GUIDE PIN HOLES AND LOC. OF (8) PANEL MOUNTING SLOTS.
 R-390 A / URR

DEPARTMENT OF THE ARMY
 SIGNAL CORPS ENGINEERING LABORATORIES
 FORT MONMOUTH NEW JERSEY
 SM-D-58796

NOTE: DIMENSIONS SHOWN IN PARENTHESES ARE FOR REFERENCE ONLY AND ARE NOT TO BE USED AS DIMENSIONS UNLESS OTHERWISE SPECIFIED.



2 BRACKET - 2 REQ'D. ALUMINUM SAND CASTINGS SEE NOTE #5 R.H. SHOWN L.H. OPPOSITE

7 BRACKET - 2 REQ'D. ALUMINUM SAND CASTINGS SEE NOTE #5 R.H. SHOWN L.H. OPPOSITE

5 GAGE BLOCK - 2 REQ'D. STEEL - SEE NOTE #3 ROCKWELL "C" 62 MIN.

10 GAGE BLOCK - 2 REQ'D. STEEL - SEE NOTE #3 ROCKWELL "C" 62 MIN.

16 GAGE PIN RETAINER - 2 REQ'D. ALUMINUM - SEE NOTE #9

NOTE: ALL FILLETS & RADII ARE 3/16 UNLESS OTHERWISE SPECIFIED

NOTE: EXCEPTING LOCATION AND QUANTITY OF GAGE BLOCK MOUNTING HOLES, THESE (4) BRACKETS SHALL BE MACHINED IDENTICALLY AND CAST FROM THE SAME PATTERN.

RE.	1-37 NO.	DESCRIPTION	MATL.	MATL. SPEC.
LIST OF MATERIAL				

UNLESS OTHERWISE SPECIFIED		MOTOROLA INC.		GAGE TO CHECK		DEPARTMENT OF THE ARMY	
DIMENSIONS ARE IN INCHES		ORDER NO. 14325-PC-58-A1 (51)		MAX. OVERALL DIMS. OF MAIN CHASSIS, LOC. OF (2) REAR GUIDE PIN HOLES, AND LOC. OF (3) PANEL MOUNTING SLOTS.		SIGNAL CORPS ENGINEERING LABORATORIES	
TOLERANCES ON FRACTIONS DECIMALS ANGLES		SIGNAL CORPS		R-390 A / URR		FORT MONMOUTH NEW JERSEY	
± 1/64 ± .005 ± 0°30'		REVIEWED XXX		SCALE HALF		SM-D-58796	
DRAWN J. MACH		APPROVED M.H.		DATE 9 JULY 1958		5:1	
DATE 7-9-58		CHECKED P.O.L.		APPROVED 2799		WHEN REFERRING TO THIS DRAWING STATE DRAWING NO., APPLICABLE ISSUE SYMBOL, IF ANY, AND DATE.	
USED ON		APPLICATION		APPROVED			