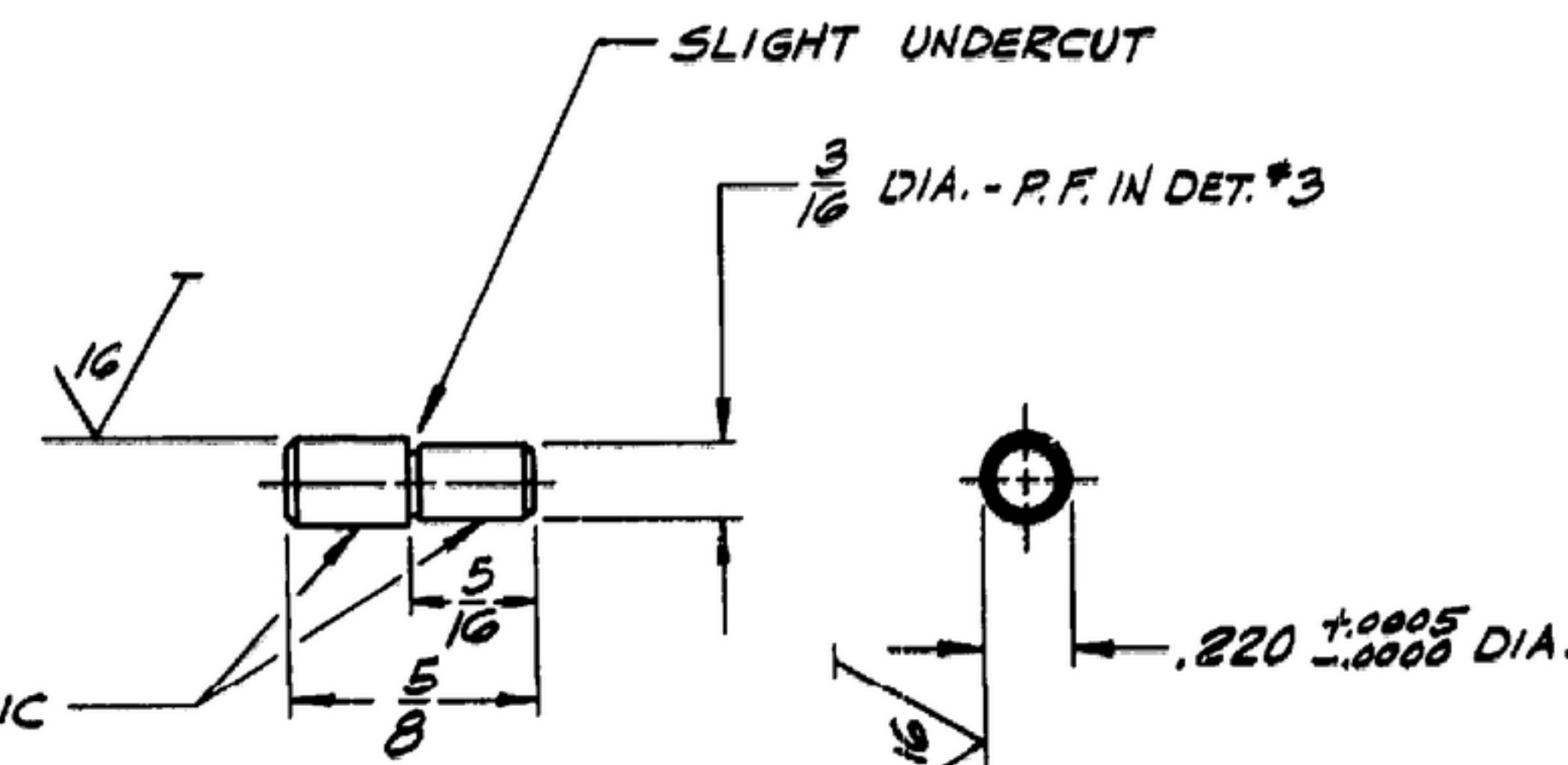


NOTE:
SQUARENESS AND PARALLELISM OF ALL
FUNCTIONING, GAGING, & LOCATING SURFACES
MUST BE HELD WITHIN .0005 T.I.R.



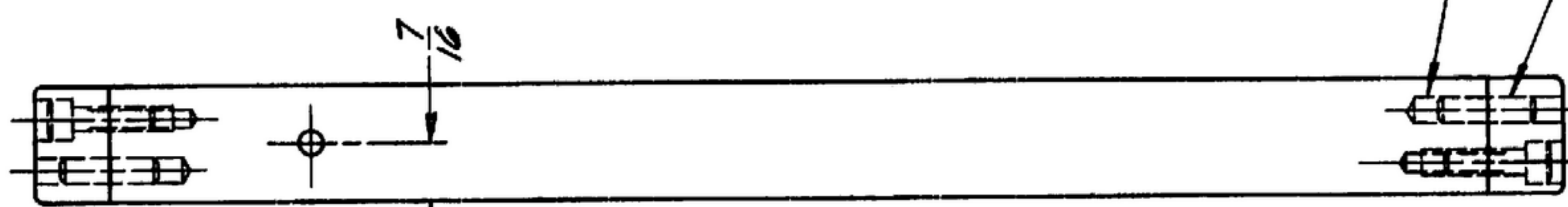
MUST BE CONCENTRIC
WITHIN .0005 T.I.R.

② GAGE PIN - 1 REQ'D.
STEEL - SEE NOTE #3
ROCKWELL "C" 62 MIN.
SCALE: 2 = 1

- NOTES:
1. GAGE TO BE MADE PER MIL-G-13451 (SIG.C.)
 2. MECHANICAL FITS SHALL BE PER SPEC. MIL-G-10944
 3. MATERIAL SPECS. PER QQ-S-00778 (ARMY ORD.) - CLASS FS-A2
 4. METAL STAMP OR ENGRAVE USING 1/8 GOTHIC CHARACTERS.
 5. PROTECTIVE FINISH SHALL BE APPLIED TO THE NON FUNCTIONING, NON GAGING AND NON LOCATING SURFACES. BLACK PREFERRED PER MIL-G-10944.
 6. BREAK ALL UNNECESSARY SHARP EDGES AND CORNERS.
 7. ALL SCREW THREADS ARE PER DEPT. OF COMM. HANDBOOK # H-28
 8. STEEL, BAR, HOT ROLLED (NORMALIZED) FS-1010 TO FS-1095 PER SPEC. QQ-S-633.
 9. THIS GAGE WILL CHECK DWG. # SM-D-

3/16 DIA. REAM - 9/16 DEEP -
S.F. FOR DOWEL - 4 HOLES
LOCATE FROM DET. #1

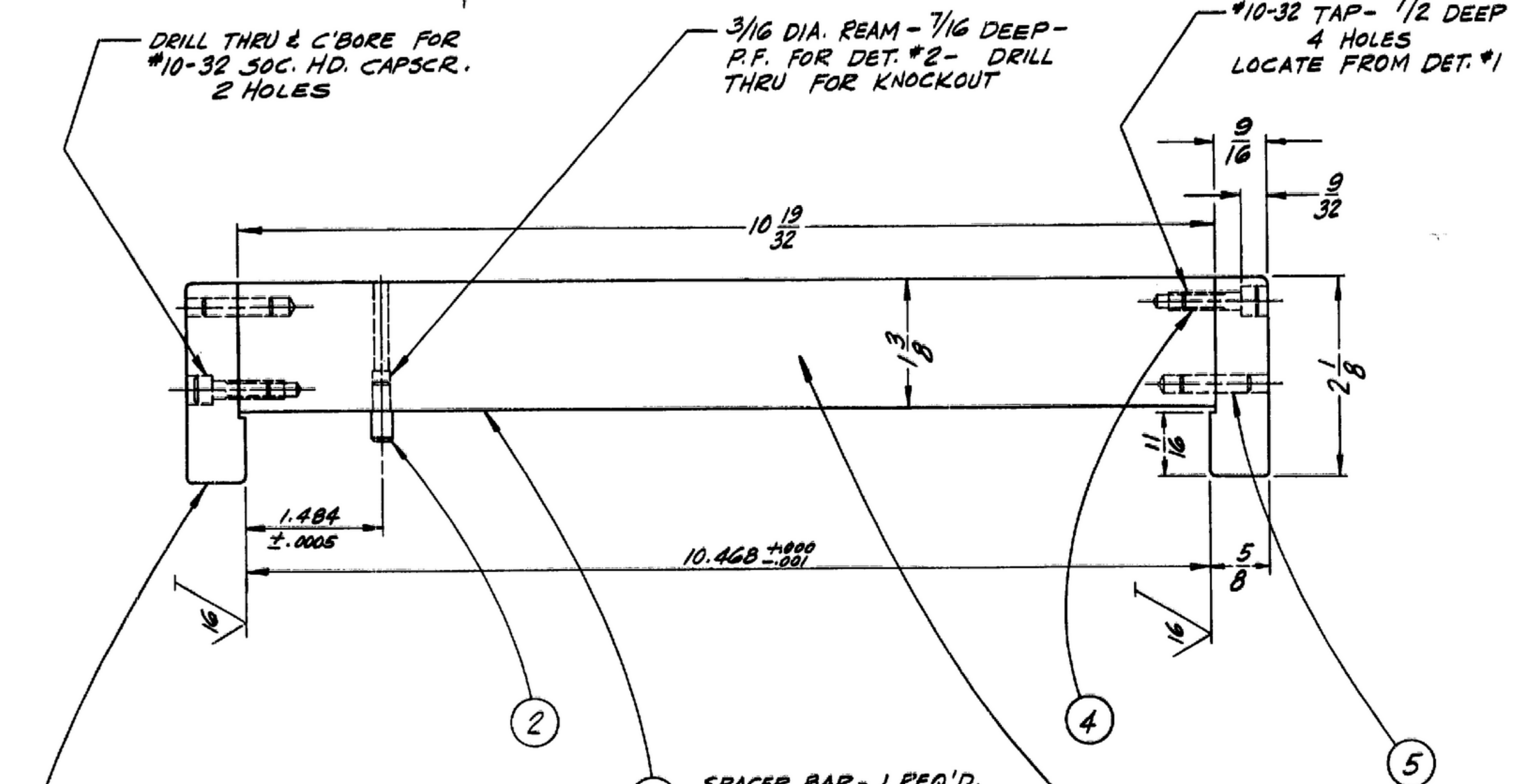
3/16 DIA. REAM THRU - P.F.
FOR DOWEL - 2 HOLES



DRILL THRU & C'BORE FOR
#10-32 SOC. HD. CAPSCR.
2 HOLES

3/16 DIA. REAM - 7/16 DEEP -
P.F. FOR DET. #2 - DRILL
THRU FOR KNOCKOUT

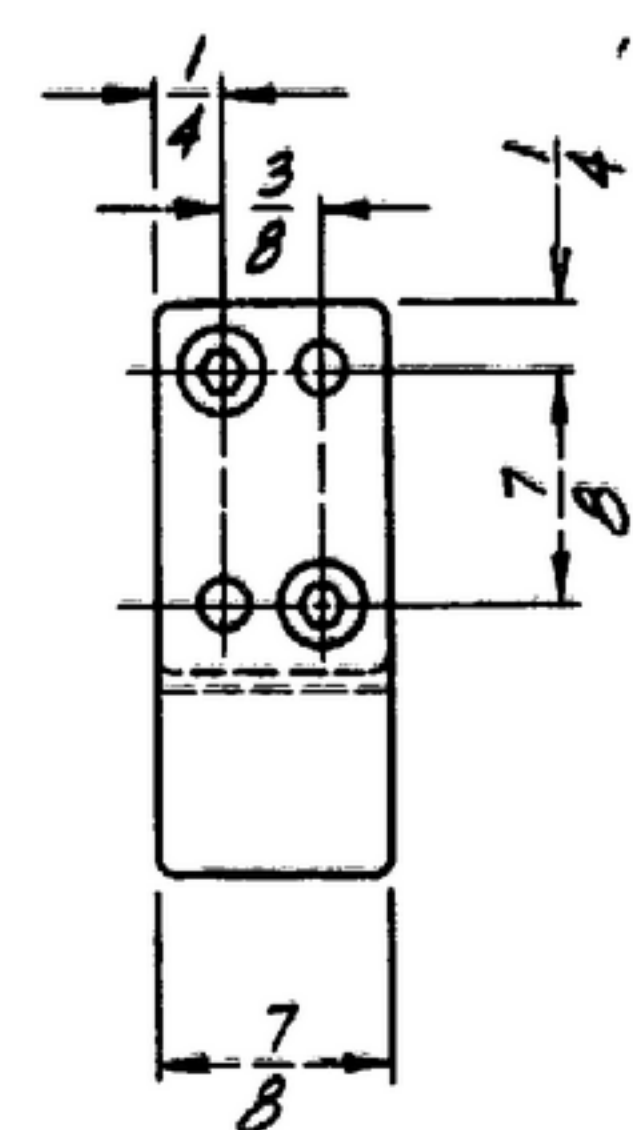
#10-32 TAP - 1/2 DEEP
4 HOLES
LOCATE FROM DET. #1



① GAGE BLOCK - 2 REQ'D.
STEEL - SEE NOTE #3
ROCKWELL "C" 62 MIN.

③ SPACER BAR - 1 REQ'D.
STEEL - SEE NOTE #8

MARKING: SEE NOTE #4
R-390 A /URR
MAX. WIDTH OF FRONT PANEL
LOC. OF (2) BOTTOM MTG. SLOTS
SIG. C. INSP.
58797
MFRS. NAME OR SYMBOL



| DET. NO. | QTY. | DESCRIPTION | MATL. | FINISHED SIZE | NOTE |
|----------|------|------------------|-------|----------------------|------|
| 5 | 4 | DOWEL | | 3/16 DIA. x 1/4 L.G. | |
| 4 | 4 | SOC. HD. CAPSCR. | | #10-32 UNF x 5/8 L. | 7 |
| 3 | 1 | SPACER BAR | | 1/2 x 1/8 x 10 1/2 | 8 |
| 2 | 1 | GAGE PIN | | 7/32 DIA. x 3/8 L.G. | 3 |
| 1 | 2 | GAGE BLOCK | STEEL | 1/2 x 1/8 x 2 1/8 | 3 |

| | | | | | |
|--|-------------|---|--|--|--|
| UNLESS OTHERWISE SPECIFIED DIMENSIONS ARE IN INCHES TOLERANCES ON FRACTIONS DECIMALS ANGLES ± 1/64 ± .005 ± 0°30' | | MOTOROLA INC. ORDER NO. 14385-PC-58-A1-(3) SIGNAL CORPS | | DEPARTMENT OF THE ARMY SIGNAL CORPS ENGINEERING LABORATORIES FORT MONMOUTH NEW JERSEY | |
| DRAWN J. MACH | DATE 7-9-58 | REVIEWED XXX | GAGE TO CHECK MAX. WIDTH OF FRONT PANEL AND LOCATION OF (2) BOTTOM MOUNTING SLOTS R-390 A /URR | | |
| SC-6L-57692 | CHECKED RBL | APPROVED MLH | SM-D-58797 | | |
| APPLICATION | APPROVED | DATE 9 JULY 1958 | SCALE FULL | WHEN REFER TO THIS DRAWING STATE DRAWING NO., APPLICABLE ISSUE SYMBOL, IF ANY, AND DATE. | |