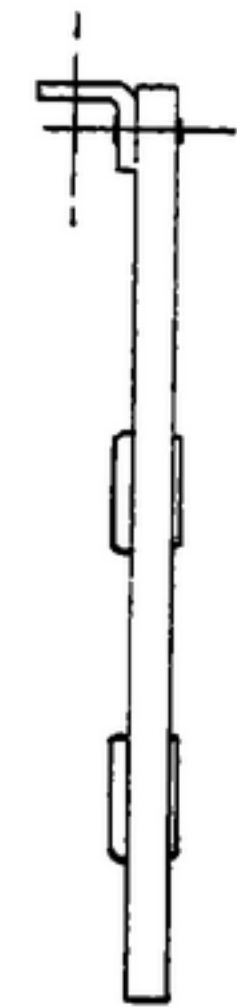
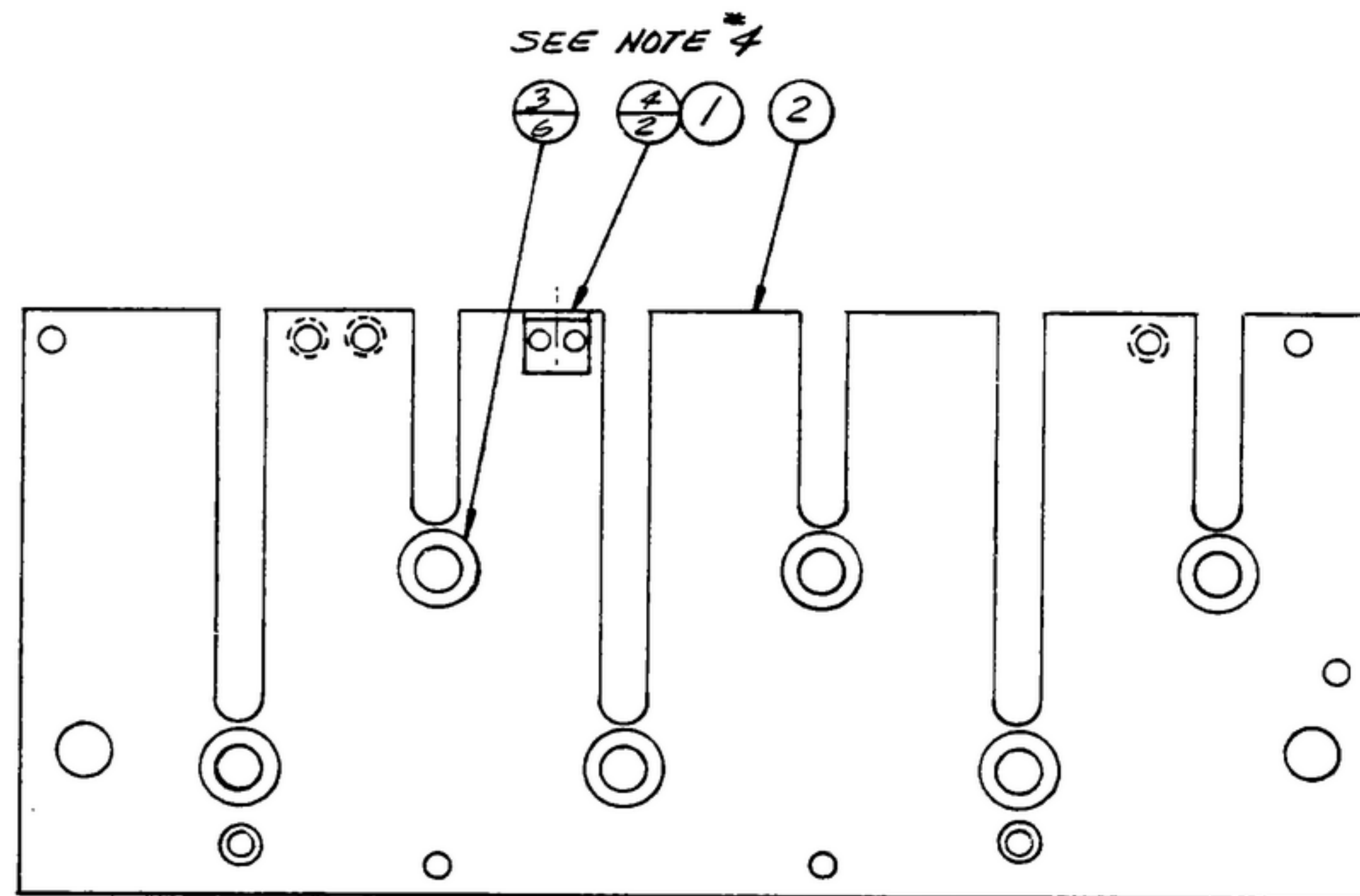


APPLICABLE WHEN GOVERNMENT DRAWINGS, SPECIFICATIONS, OR OTHER DATA ARE USED FOR ANY PURPOSE OTHER THAN IN CONNECTION WITH A SPECIFICALLY RELATED GOVERNMENT OPERATION. THE UNITED STATES GOVERNMENT THEREBY INCURS NO RESPONSIBILITY AND ANY OBLIGATION WHATSOEVER, AND THE FACT THAT THE GOVERNMENT HAS BEEN FURNISHED, FURNISHED, OR IN ANY WAY SUPPLIED THE SAID DRAWINGS, SPECIFICATIONS, OR OTHER DATA IS NOT TO BE REGARDED BY IMPLICATION OR OTHERWISE AS IN ANY MANNER LICENSING THE HOLDER OR ANY OTHER PERSON OR CORPORATION, IN CONNECTION WITH SUCH USES OR PERMISSIONS TO MANUFACTURE, USE, OR SELL ANY PATENTED INVENTION THAT MAY IN ANY WAY BE RELATED THEREBY.

"THIS DOCUMENT HAS BEEN PURCHASED BY THE GOVERNMENT AND MAY BE REPRODUCED AND USED IN CONNECTION WITH ANY GOVERNMENT PROGRAM OR PROJECT OR OPERATION."

NOTE:  
\*FOR INFORMATION ONLY, CONTRACTOR MAY AT HIS OPTION DEVIATE FROM THESE PROCESS DETAILS

| REVISIONS |             |      |          |
|-----------|-------------|------|----------|
| SYM       | DESCRIPTION | DATE | APPROVAL |



NOTES:

1. SLOTS TO BE  $.265^{+0.002}$  AFTER ASSEMBLY
2. PRESS BEARINGS (3) INTO PLATE (2) FROM SIDE SHOWN
3. BURNISH BEARINGS TO  $.2500^{+0.0005}$  DIA.
4. RIVET HEAD (4) TO BE OPPOSITE SIDE FROM BRACKET (1)
5. SECURE BRACKET (1) TO PLATE (2) USING RIVETS (4)
6. PLATE TO BE FLAT WITHIN .020 TIR
7. IN ALL SPLIT BALLOONS TOP FIGURE IS MATERIAL LIST ITEM INDICATOR & BOTTOM FIGURE IS QUANTITY.

| ITEM | REQD | PART NO.    | DESCRIPTION         | MATL | MATL SPEC |
|------|------|-------------|---------------------|------|-----------|
| 4    | 2    | M456A03-4   | RIVET               |      |           |
| 3    | 6    | SM-B-283157 | BEARING             |      |           |
| 2    | 1    | SM-C-343599 | PLATE, CAM          |      |           |
| 1    | 1    | SM-B-248976 | BRACKET, DUST COVER |      |           |

LIST OF MATERIAL

|  |  |   |  |  |  |
|--|--|---|--|--|--|
| UNLESS OTHERWISE SPECIFIED<br>DIMENSIONS ARE IN INCHES<br>TOLERANCES ON<br>FRACTIONS DECIMALS ANGLES |  | JTC-WARREN WARNER<br>ELECTRONICS ORDER NO.<br>92428-PC-59-A1-51 |  | DEPARTMENT OF THE ARMY<br>SIGNAL CORPS ENGINEERING<br>LABORATORIES |  |
| SAFD-343600 SC-DL-248775   |  | DRAWN BY: U. Saardina   |  | PLATE ASSY-CAM   |  |
| NEXT ASSY  |  | CHECKED BY: [Signature]   |  | FORT MONMOUTH NEW JERSEY   |  |
| USED ON  |  | DATE: 6 OCT 59  |  | SM-C-343601  |  |
| APPLICATION  |  | SCALE: 1/1  |  |  |  |