

NOTICE - WHEN GOVERNMENT DRAWINGS, SPECIFICATIONS, OR OTHER DATA ARE USED FOR ANY PURPOSE OTHER THAN IN CONNECTION WITH A DEFINITELY RELATED GOVERNMENT PROCUREMENT OPERATION, THE UNITED STATES GOVERNMENT THEREBY INCURS NO RESPONSIBILITY NOR ANY OBLIGATION WHATSOEVER; AND THE FACT THAT THE GOVERNMENT MAY HAVE FORMULATED, FURNISHED, OR IN ANY MANNER LICENSING THE HOLDER OR ANY OTHER PERSON OR CORPORATION, OR CONVEYING ANY RIGHTS OR PERMISSION TO MANUFACTURE, USE, OR SELL ANY PATENTED INVENTION THAT MAY IN ANY WAY BE RELATED THERETO.

"THIS DOCUMENT HAS BEEN PURCHASED BY THE GOVERNMENT AND MAY BE REPRODUCED AND USED IN CONNECTION WITH ANY GOVERNMENT PROCUREMENT OR MAINTENANCE OPERATION."

NOTE:
DATA MARKED BY AN ASTERISK (*) ARE FOR INFORMATION ONLY, CONTRACTOR MAY, AT HIS OPTION, DEVIATE FROM THESE DETAILS

REVISIONS			
SYM	DESCRIPTION	DATE	APPROVAL
B ₅	B ₁ - NOTE 14 REVISED, B ₂ - NOTE 25 ADDED; B ₃ - ITEM 17 SM-B-34363 WAS SM-B-249188; B ₄ - ITEM 18 1 REQ. SM-B-343664 COLLAR-STOP ADDED; B ₅ - ITEM 57 SWE PART NO. 03S111277-1, 2 REQ. SM-D-343619-10 SCREW, OVAL PT, SET, STEEL ASA B13 3, NOTE 25 ADDED	MAR 60	CAB4711
	RETRACED, NO CHANGE	12 AUG 62	21582PG-61
C ₅	(1) REVISED NOTE 8 (2) WAS STEEL AND ASA B18.3 (3) DELETED ITEM 65 (4) QUANTITY WAS 12(5) CALLOUT WAS 65 OVER 4	25 OCT 63	21582-PG61
D	(1) NOTE 26 ADDED, (2) ITEM 57 WAS ASA B13.3.	14 MAR 60	JLC JUM R P D

DI

NOTES:

- ASSEMBLY SHALL BE WIRED IN ACCORDANCE WITH WIRING ASSY SM-E-249141, TO PROVIDE CIRCUIT SHOWN ON SCHEMATIC DIAGRAM SM-J-249190.
- PART MAY BE .062 THICK WITH FINISH M262 PER SPEC MIL-F-14072 AS SUPPLIED BY UNITED SCREW AND BOLT CORP., CHICAGO, ILLINOIS OR EQUAL.
- PART MAY BE SUPPLIED BY CENTRAL SCREW CO., CHICAGO, ILL., OR EQUAL.
- PART SHALL BE .172 I.D. X .437 O.D. X .036 THK.
- PART SHALL BE .147 I.D. X .312 O.D. X .032 THK.
- PART SHALL BE 3/32 THK, DOUBLE CHAMFERED.
- PART SHALL BE .250 ^{+0.000}/_{-0.009} HEX. X .093 ^{+0.005}/_{-0.006} THK. DOUBLE CHAMFERED.
- PART SHALL BE 4-40 NC-2A X 1/2 LONG, 6 FLUTE HD.,
- PART SHALL BE 4-40 NC-2A X 9/16 LONG, 6 FLUTE HD, FINISH M262A PER SPEC MIL-F-14072.
- WASHER (6) INSERTED BETWEEN JAWS OF CLAMP (8) AT APPROXIMATELY RIGHT ANGLES FROM SCREWDRIVER ACCESS HOLE.
- ASSEMBLE CABLE ASSY (28) TO STUDS A & B OF SUPPRESSOR (37) TOWARD TB102 AS SHOWN.
- ADD INSULATION (29) OVER CLAMP (31).
- LUBRICATE WITH GREASE (56) PER SPEC. MIL-G-7421 BUSHING ON I.F. EXTENSION (4) ANT. TRIM BUSHING & ZERO ADJUST SHAFT & ALL CAPTIVE MTG. SCREWS.
- ZERO ADJUSTMENT SHAFT TO BE TURNED UNTIL CLUTCH IS DISENGAGED. ASSEMBLE COLLAR (18) SNUG AGAINST BUSHING AND TIGHTEN SCREWS (57). ASSEMBLE KNOB (40) OVER COLLAR.
- ALL THROUGH SHAFT BUSHINGS SHOULD BE LEFT LOOSE FOR ASSEMBLY & TIGHTENED AFTER UNITS ARE SECURED.
- K.C. DRIVE GEAR SHOULD BE LOOSENEED & ADJUSTED FOR MIN. DISTANCE BETWEEN DIAL LOCK AND LOCKING PLATE.
- DIAL LOCK IS LOOSENEED & ROTATED OUT OF POSITION WHEN ASSEMBLING FRONT PANEL. AFTER PANEL IS SECURED, REPOSITION DIAL LOCK AS SHOWN.
- OSCILLATOR SHAFT (9) IS ALIGNED WITH COUPLER BY LOOSENING SCREW IN FRONT BRACKET OF OSCILLATOR AFTER UNIT IS IN POSITION.
- MAX. TORQUE TO DRIVE K.C. KNOB AFTER ASSEMBLY IS COMPLETED IS 3 INCH LBS. MAX. TORQUE TO DRIVE M.C. KNOB OUT OF DETENT IS 12 INCH LBS. MIN. TORQUE OUT OF DETENT POSITION IS 3 INCH LBS.
- FINISH: P213 PER SPEC. MIL-F-14072. FINAL PAINT FILM NO. 14110 GREEN GLOSS ENAMEL PER FED. STD. 595 TO MEET THE APPLICABLE REQUIREMENTS OF SPEC. MIL-F-14072. PAINT ENTIRE HEAD (EXCLUDING UNDERSIDE).
- CLEAN V.F.O. SHAFT, ASSEMBLE & CEMENT INSULATOR (2) TO SHAFT OF OSCILLATOR (9) WITH BONDING AGENT (55), R313, AS SUPPLIED BY CARL H. BIGGS CO., LOS ANGELES, CALIFORNIA OR EQUAL, AND AIR DRY FOR 24 HOURS.
- IN ALL SPLIT BALLOONS, TOP FIGURE IS MATERIAL LIST ITEM INDICATOR, AND BOTTOM FIGURE IS QUANTITY.
- FOR LIMITING DIMENSIONS, SEE SM-D-248782 (33).
- PART SHALL BE .172 I.D. X .375 O.D. X .036 THK.
- PART SHALL BE 8-36 NF-2B X 1/8 LONG, 6 FLUTE HD., FINISH M262A PER SPEC MIL-F-14072.
- REVISION 1954 OF ASA SHALL BE APPLICABLE TO THE SCREW HEADS OF ITEMS 49 & 57.

C1

D2

C4

C3

C2

74	1	SM-B-343615	CLAMP, CABLE			
73	2	SM-D-343619-9	WASHER, NO. 8			24
72	2	MS35333-55	WASHER, LOCK			
71	16	MS35216-39	SCREW			
70						
69						
68	16	MS35338-80	WASHER			
67	47	MS35338-79	WASHER			
66	7	MS35336-11	WASHER			
65						
64	14	MS35216-26	SCREW			
63	7	MS35216-25	SCREW			
62	13	MS35216-24	SCREW			
61	4	MS35216-23	SCREW			
60	4	MS35216-22	SCREW			
59	8	MS35200-43	SCREW			
58	10	MS35200-26	SCREW			
57	2	SM-D-343619-10	SCREW, OVAL PT, SET	STEEL	ASA B18.3	25, 26
56			GREASE			13
55			BONDING AGENT			21
54	6	SM-D-343619-7	NUT 4-40 NC-2B 3/16 SQ	STEEL		2
53	2	SM-D-343619-6	NUT 8-32 NF-2B	STEEL		367
52	7	SM-D-343619-5	NUT 6-32 NC-2B 1/4 HEX	CRES		366
51	2	SM-D-343619-4	WASHER-FLAT NO. 8	CRES		364
50	9	SM-D-343619-3	WASHER-FLAT NO. 6	CRES		365
49	2	SM-D-343619-2	SCREW - SOCKET HD	STEEL	ASA B18.3	9 & 26
48	4	SM-D-343619-1	SCREW - SOCKET HD	CRES 303		8
47						
46	1	SM-D-343623	PANEL ASSY - REAR			
45	1	SM-D-249134	PANEL ASSY - FRONT			
44	1	SM-C-283206	RELAY - COAXIAL			
43						
42	15	SM-B-283170	SCREW - SET			
41	2	SM-B-249243	KNOB-TUNING			19
40	2	SM-B-249242-3	KNOB-BAR			
39	5	SM-B-249242-2	KNOB-BAR			
38	8	SM-B-249242-1	KNOB-BAR			
37	1	SM-B-249221	SUPPRESSOR - NOISE			
36	2	SM-B-249205	CLAMP - CABLE			
ITEM REQD		PART NO	DESCRIPTION	MATL	MATL SPEC	NOTES

35	1	SM-B-249203-1	CLAMP-CABLE			
34	2	SM-B-249200	CLAMP-CABLE			
33	REF	SM-D-248782	FRAME ASSY			23
32	1	SM-B-249154	SPRING, GROUNDING			
31	1	SM-B-249203-2	CLAMP-CABLE			12
30	1	SM-E-249141	WIRING ASSY			1
29	AS REQD	SM-D-313619-8	INSULATION CLASS B-A-1	BLK NO. 1	MIL-T-3190	12
28	1	SM-B-249115	CABLE ASSY - POWER			11
27	1	SM-C-249133	PLATE ASSY - FLOOR			
26	1	SM-C-249129	FRAME ASSY - LONG			
25	1	SM-C-249128	FRAME ASSY - SHORT			
24	1	SM-C-343634	FRAME ASSY - LEFT			
23	1	SM-C-343633	FRAME ASSY - RIGHT			
22	2	MS35216-25	SCREW			20
21	5	MS35216-27	SCREW			20
20	1	SM-B-249118	CABLE ASSY - I.F			
19	1	SM-B-249117	BRACKET ASSY - VFO			
18	1	SM-B-343664	COLLAR - STOP			
17	1	SM-B-343663	SHAFT ASSY			
16	1	SM-B-249105	COVER			
15	1	SM-C-249104	BRACKET - RELAY			
14	1	SM-D-343629	FINAL ASSY - R F			
13	1	SM-C-343621	FINAL ASSY - I F			
12	1	SM-D-248801	AUDIO ASSY			
11	1	SM-D-248984	POWER SUPPLY ASSY			
10	1	SM-B-248878	SHAFT - EXT			13, 15
9	1	SM-D-343626	OSCILLATOR - 70H-12			18, 21
8	2	SM-B-170763	CLAMP			
7	4	SM-B-178414	CLAMP			
6	2	SM-B-178483-3	WASHER			
5	2	SM-B-178665	COUPLING ASSY			
4	1	SM-B-178493	SHAFT			13, 15
3	1	SM-C-178492	GUIDE			
2	1	SM-B-178491	INSULATOR			21
1	1	SM-B-178481	SPRING			
ITEM REQD		PART NO.	DESCRIPTION	MATL	MATL SPEC	NOTES

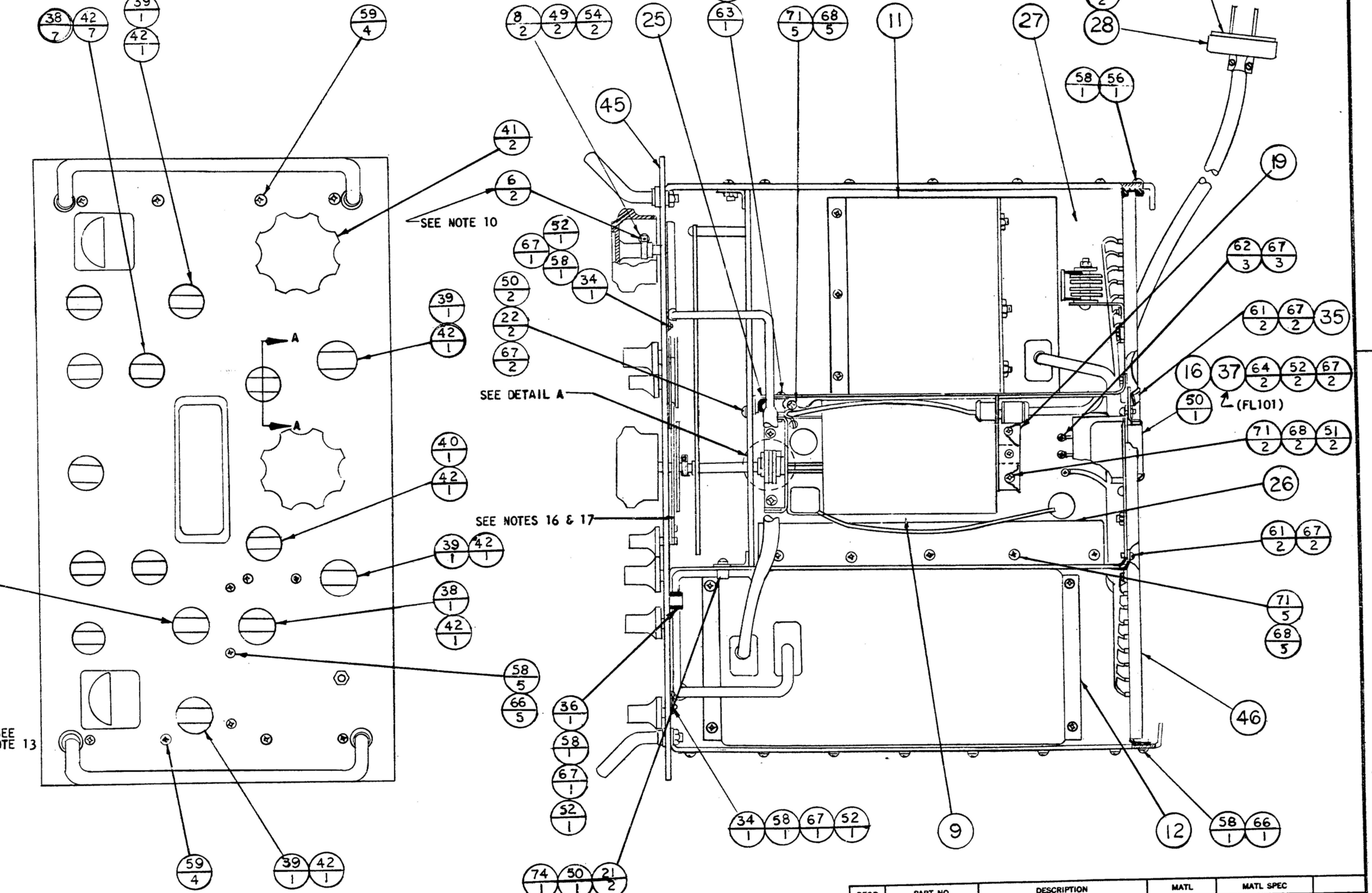
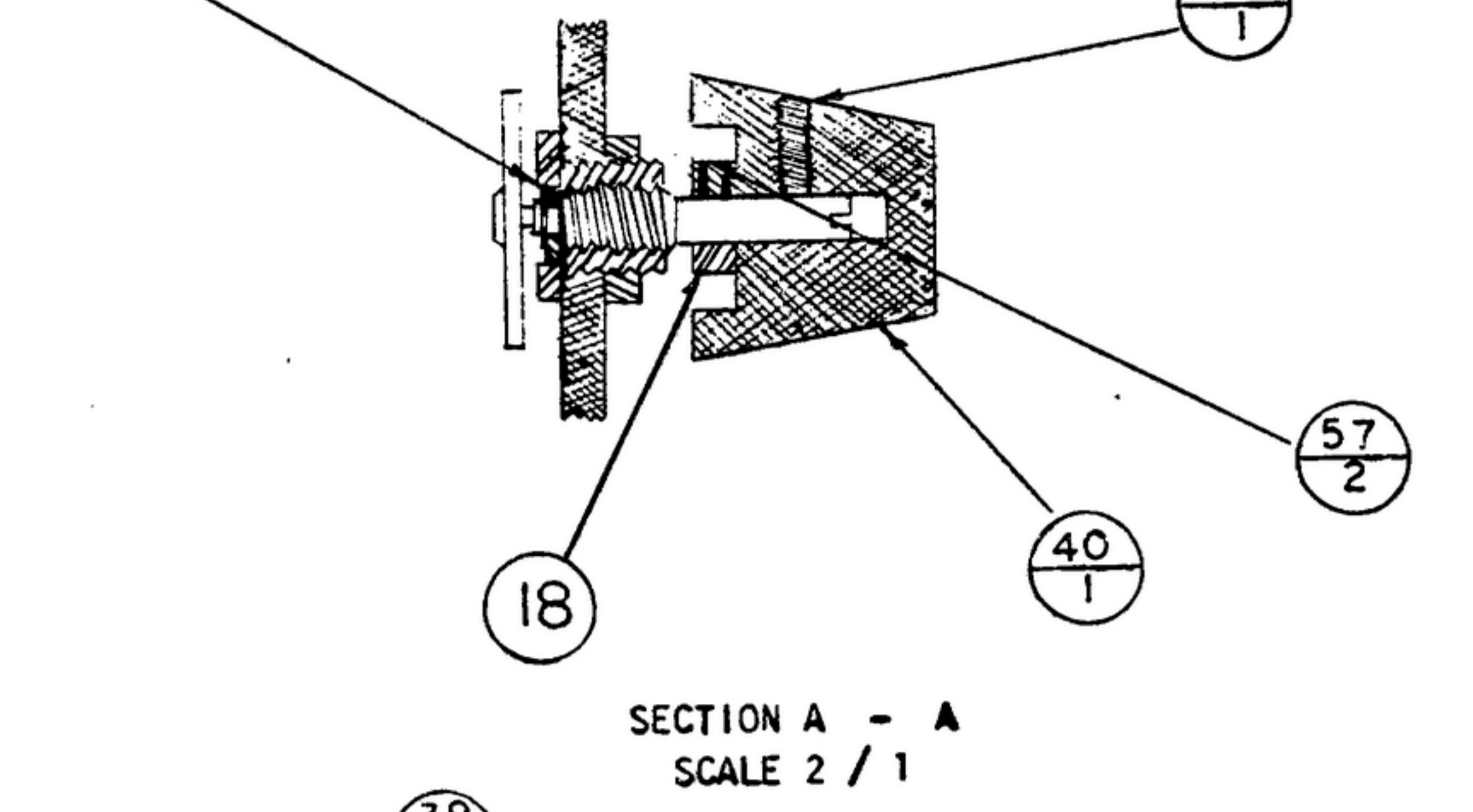
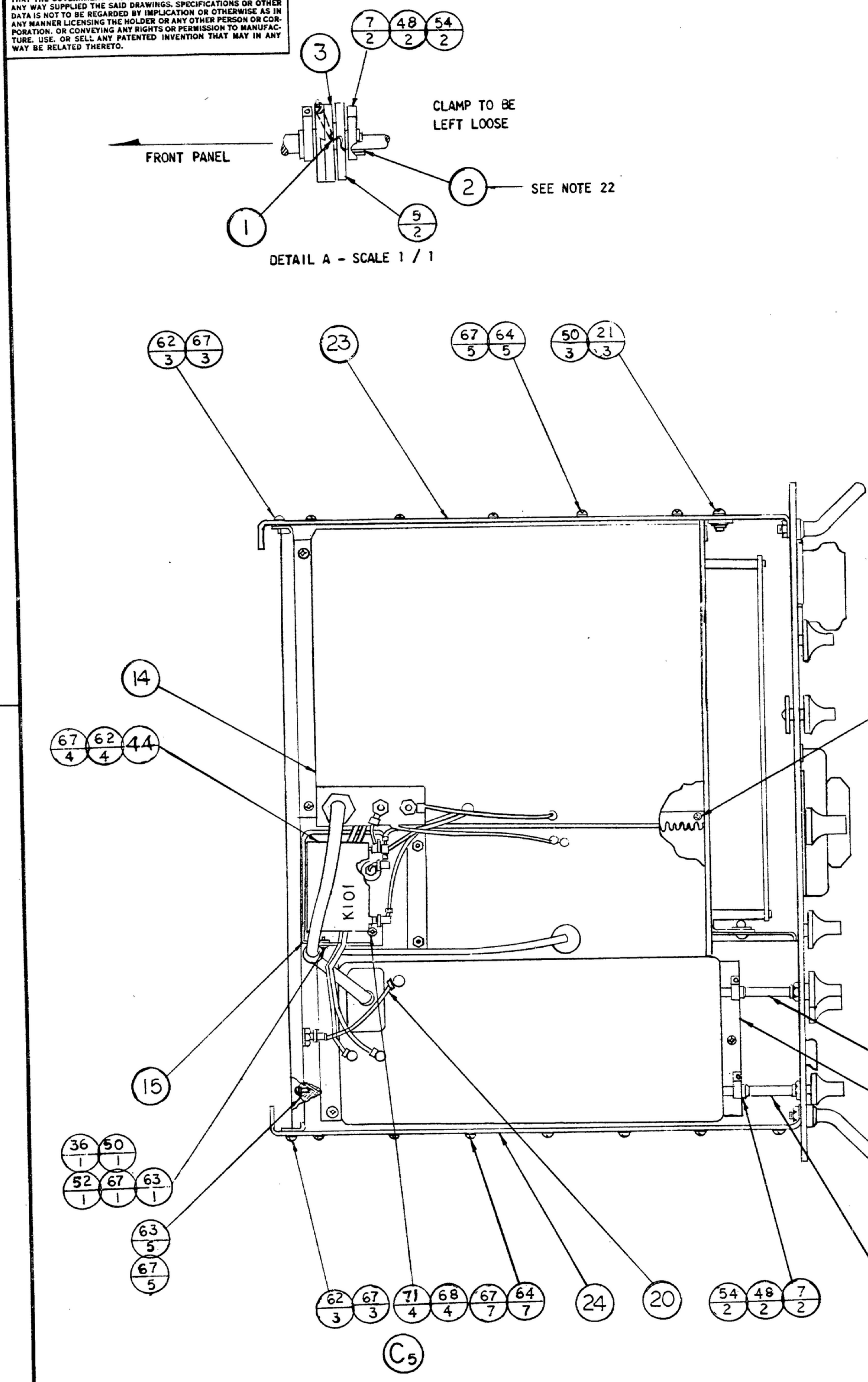
UNLESS OTHERWISE SPECIFIED DIMENSIONS ARE IN INCHES TOLERANCES ON FRACTIONS DECIMALS ANGLES		STEWART-WARNER ELECTRONICS 42428-PC 59		DEPARTMENT OF THE ARMY U. S. ARMY SIGNAL MATERIEL SUPPORT AGENCY	
DRAWN BY <i>[Signature]</i>		REVIEWED GF P.M.E.		FORT MONMOUTH NEW JERSEY	
DATE		APPROVED P.M.E.		SM-D-343619	
CHECKED BY <i>[Signature]</i>		DATE 27 NOV 59		CODE 80063 SHEET 1 OF 2	
APPROVED BY <i>[Signature]</i>		SCALE		WHEN REFERRING TO THIS DRAWING STATE DRAWING NO., APPLICABLE ISSUE SYMBOL, IF ANY, AND DATE.	

NOTICE - WHEN GOVERNMENT DRAWINGS, SPECIFICATIONS, OR OTHER DATA ARE USED FOR ANY PURPOSE OTHER THAN IN CONNECTION WITH A DEFINITELY RELATED GOVERNMENT PROCUREMENT OPERATION, THE UNITED STATES GOVERNMENT THEREBY INCURS NO RESPONSIBILITY NOR ANY OBLIGATION WHATSOEVER, AND THE FACT THAT THE GOVERNMENT MAY HAVE FORMULATED, FURNISHED, OR IN ANY WAY SUPPLIED THE SAID DRAWINGS, SPECIFICATIONS OR OTHER DATA IS NOT TO BE REGARDED BY IMPLICATION OR OTHERWISE AS IN ANY MANNER LICENSING THE HOLDER OR ANY OTHER PERSON OR CORPORATION, OR CONVEYING ANY RIGHTS OR PERMISSION TO MANUFACTURE, USE, OR SELL ANY PATENTED INVENTION THAT MAY IN ANY WAY BE RELATED THERETO.

"THIS DOCUMENT HAS BEEN PURCHASED BY THE GOVERNMENT AND MAY BE REPRODUCED AND USED IN CONNECTION WITH ANY GOVERNMENT PROCUREMENT OR MAINTENANCE OPERATION."

REVISIONS			
SYM	DESCRIPTION	DATE	APPROVAL
B ₁	ADDED SECTION A-A & NOS. 18, 57/2	3 MAR 60	CAB4711
-	RETRACED, NO CHANGE	12 AUG 62	21582-PC-61
C ₅	SEE SHEET 1 FOR REVISIONS	25 OCT 63	21582-PC-61
D		14 MAR 66	REV'D BY JMRP

NOTE: DATA MARKED BY AN ASTERISK (*) ARE FOR INFORMATION ONLY. CONTRACTOR MAY, AT HIS OPTION, DEVIATE FROM THESE DETAILS



REQD	PART NO.	DESCRIPTION	MATL	MATL SPEC
LIST OF MATERIAL				

UNLESS OTHERWISE SPECIFIED DIMENSIONS ARE IN INCHES TOLERANCES ON FRACTIONS DECIMALS ANGLES		STEWART-WARNER ELECTRONICS 42422 PC-59 SIGNAL CORPS		DEPARTMENT OF THE ARMY U. S. ARMY SIGNAL MATERIEL SUPPORT AGENCY FORT MONMOUTH NEW JERSEY	
DRAWN BY C. Gogolowski		REVIEWED GF P ME		RECEIVER ASSEMBLY	
DATE		APPROVED			
CHECKED BY Calloway		PME			
APPROVED BY Walters		DATE 27 NOV 59		SCALE 1 / 2	
SM-D-343622 SCDL 248775				SM-D-343619	
NEXT ASSY USED ON				CODE 80063 SHEET 2	

WHEN REFERRING TO THIS DRAWING STATE DRAWING NO., APPLICABLE ISSUE SYMBOL, IF ANY, AND DATE.