

KEYTOP DESCRIPTION	PART NO.	KEYTOP DESCRIPTION	PART NO.	KEYTOP DESCRIPTION	PART NO.	KEYTOP DESCRIPTION	PART NO.
1 !	180160	E	180259	P @	180180	- =	180170
1 •	180320	E Ç	180333	P ..	180263	, <	180197
2 "	180161	E WRU	②183889	Q	180327	; >	180198
2 ▶	180321	F RU	180184	Q START	180171	. +	180199
3 #	180162	F	180273	Q X-ON	180422	/ ?	180200
3 ■	180334	F PRINT	180429	Q X-ON	②183888	: *	180205
4 \$	180163	G BELL	180185	R TAPE	180174	* :	180324
5 %	180164	G	180274	R	180260	\ ^	180328
5 %	180323	G BELL	②183890	R PUNCH	180425	// /	180331
6 &	180165	H	180186	S X-OFF	180182	/ .	180332
7 ' ,	180166	I TAB	180178	S	180282	* *	180335
8 (	180167	J	180187	S STOP	180428	-	180336
9 )	180168	K VT	180188	S X-OFF	②183892	LOC LF	①151249
0	180169	K □	180383	T TAPE	180175	LOC CR	①151250
A	180181	K VT □	180430	T	180261	REPT	①151254
A SOA	180435	L FORM	180189	T PUNCH	180426	LOC B SP	①153280
A SOM	②183891	L /	180385	U	180177	RUB OUT	180201
B	180194	L FF \	180431	V	180193	RE- TURN	180202
B SOT	180434	M	180196	V PRINT	180433	LINE FEED	180203
C	180192	M □	180384	W	180172	ALT MODE	180257
C EOM	180432	N ↑	180195	W LEM	180423	CTRL	192299
D EOT	180183	N	180250	X	180191	CTRL	③305064
D	180278	O ←	180179	Y	180176	SHIFT	192510
E WRU	180173	O →	180326	Z	180190	BRK RLS	197040

- ①Red Keytops
- ②Gray Body- White Lower Case, Yellow Upper Case
- ③Gray Body- Yellow Characters
- All Other Keytops Have Gray Body- White Characters

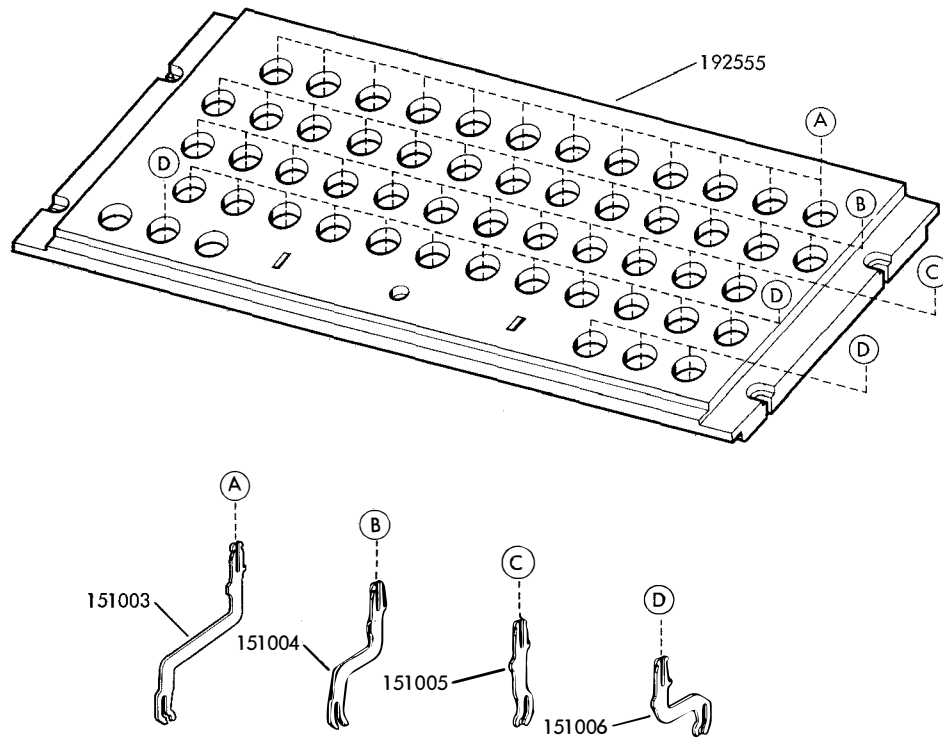


FIGURE 13. KEYTOPS AND KEYLEVERS