

21 November 1966

ANTENNA CONTROL-TRANSMITTER KEYER C-4882/WRT

Cog Service: USN FSN:

Functional Class:

USA

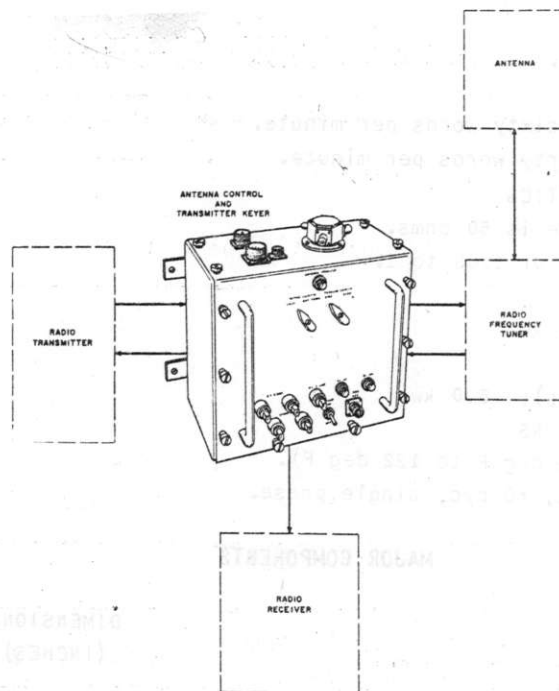
USN

USAF

TYPE CLASS:

Used by

MANUFACTURER'S NAME/CODE NUMBER: Westinghouse Electric Corporation, Electronics Div., (89661).



ANTENNA CONTROL-TRANSMITTER KEYER C-4882/WRT

#### FUNCTIONAL DESCRIPTION:

The Antenna Control-Transmitter Keyer C-4882/WRT is designed to provide break-in operating facilities by automatically switching the antenna from the transmitter to the receiver. This break-in operation is accomplished by employing antenna transfer contacts that connect the antenna to the receiver when the key is open, and to the transmitter when the key is closed. The keying relays within the antenna control-transmitter keyer are designed in such a manner that the antenna transfer contacts are never required to break the antenna current.

No field changes in effect at time of preparation (21 July 1966).

#### RELATION TO OTHER EQUIPMENT:

The C-4882/WRT is similar to C-1670/U; functionally interchangeable. Unit performs essentially the same function as C-1670/U. The chief difference is in the Antenna Transfer

## ANTENNA CONTROL-TRANSMITTER KEYER C-4882/WRT

Relay. This control antenna will operate at power of 2 KW D.E.P. up to 30 mc W/SWR of less than 1.15 to 1, this is not possible w/C-1670/U.

### EQUIPMENT REQUIRED BUT NOT SUPPLIED:

(1) Radio Transmitting Set, AN/WRT-2 or AN/WRT-4; (1) Multimeter, AN/PSM-4C; (1) Oscilloscope, AN/USM-117; (1) Vari-Speed Keyer, Boehme Type 66-M; (1) Antenna Tuner; (1) Whip Antenna; (1) Radio Receiver.

### TECHNICAL CHARACTERISTICS:

FREQUENCY RANGE: 2 to 30 mc.

#### KEYING SPEEDS

Break-in-operation up to sixty words per minute.

Local operation up to thirty words per minute.

#### INPUT AND OUTPUT CHARACTERISTICS

Input and output impedance is 50 ohms.

POWER CAPABILITY: With VSWR of 1.05 to 1.

AVERAGE POWER: 500 W.

PEAK ENVELOPE POWER: 2.0 kw.

HAND-KEYED CW: 1.0 kw.

MACHINE CW (SHORT INTERVAL): 5.0 kw.

#### AMBIENT TEMPERATURE LIMITATIONS

0 deg C to 50 deg C (+ 32 deg F to 122 deg F).

POWER REQUIREMENT: 115 v ac, 60 cyc, single phase.

### MAJOR COMPONENTS

QTY	ITEM	DIMENSIONS (INCHES)	WEIGHT (LBS)
1	Antenna Control Transmitter keyer C-4882/WRT includes:	8-5/8 x 12-7/8 x 15-1/4	30
2	Technical Manuals	1/2 x 8-1/2 x 11	

### REFERENCE DATA AND LITERATURE:

NAVSHIPS 94248(A): Technical Manual for Antenna Control-Transmitter keyer C-4882/WRT.  
0967-134-9010: Technical Manual for Antenna Control-Transmitter Keyer C-4882/WRT.

### SHIPPING DATA

PKGS	VOLUME (CU FT)	WEIGHT (LBS)
1	2.0	40

1.2 C-4882/WRT: 2

ANTENNA CONTROL-TRANSMITTER KEYER C-4882/WRT

PROCUREMENT DATA

PROCURING SERVICE: USN  
SPEC &/OR DWG: SHIPS-A-3727

DESIGN COG: USN, NavShips

CONTRACTOR	LOCATION	CONTRACT OR ORDER NO.	APPROX. UNIT COST
Westinghouse Electric Corp., Electronics Division, Defense Center	Baltimore, Md.	N0bsr-85309	

787